

**GENERAL SPECS**

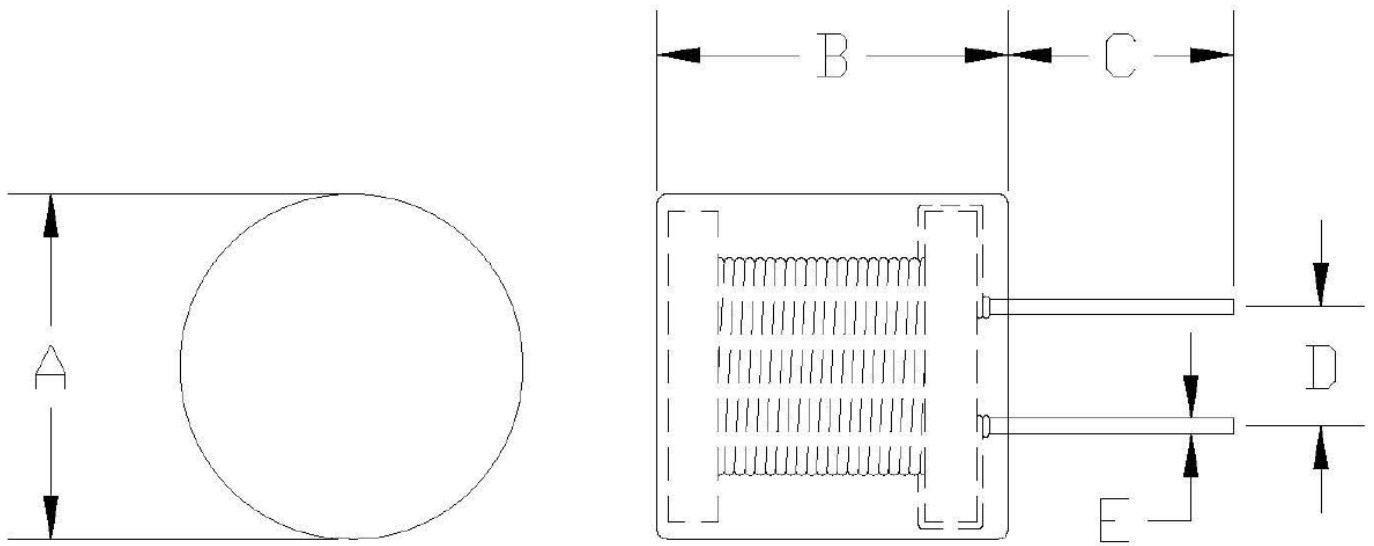
STORAGE TEMPERATURE :  $-40^{\circ}\text{C}\sim+85^{\circ}\text{C}$

OPERATURE TEMPERATURE :  $-40^{\circ}\text{C}\sim+85^{\circ}\text{C}$

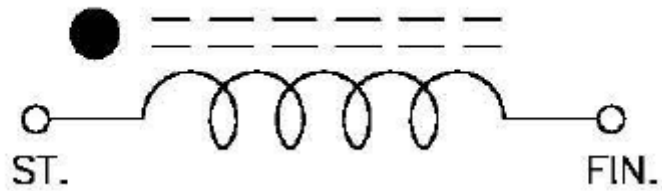
RESISTANCE TO SOLDER HEAT :  $260^{\circ}\text{C}$  10 SEC.

HAND SOLDERING TEMPERATURE :  $350^{\circ}\text{C}\sim400^{\circ}\text{C}$  3~5 SEC.

**SHAPE & DIMENSION**



## ELCETRICAL SCHEMATICS



UNIT:(mm)

SYMBOL	A	B	C	D	E		
DIMENSIONS	12.5MAX	15.5MAX	25.0MIN	4.5±0.8	0.65±0.1		

No.	Elexp Part#	Inductance L ± 10% (mH)	Test Freq. (KHz)	Q MIN	DCR (Ω) MAX.	WIRE (Φ)	TURNS (TS)REF
1	15047M	47	79.6	35	72	0.08	960
2		56	79.6	35	110	0.08	1050
3	15068M	68	79.6	35	120	0.08	1190
4		82	79.6	35	150	0.08	1340
5	150100M	100	25.2	30	150	0.08	1590
6	150120M	120	25.2	30	200	0.07	1700
7	150150M	150	25.2	30	250	0.07	1933
8		470	1	2.5	1000	0.04	3520
9		1000	1	2.5	1700	0.04	5097