



COLOSTOMY

UROSTOMY

ILEOSTOMY



CUI Wear designed for your
support and comfort

AVAILABLE ON NHS PRESCRIPTION

Freephone 0800 279 2050
www.cuiwear.com

Background

CUI Wear is a leading British based manufacturer and supplier of specialised medical support garments and ostomy underwear, with over 30 years development and manufacturing experience in medical and consumer textiles.

Based in Leicestershire, CUI Wear is part of Medalin Group Ltd which manufactures a range of cotton and nylon based medical and consumer textiles including Anti Embolic Stockings (Saphena), Medalin branded prosthetic garments, diabetic socks and the Pretty Legs range of consumer hosiery.

Why Choose CUI Wear?

We care and want to make a difference so you feel comfortable, confident and supported. We have a team of dedicated UK Support Specialists that have your best interests at heart and can offer free advice and fitting consultations. Every patient is treated with care, dignity and respect with attention to individual needs. Our support garments provide a reassuring balance of comfort and support. All of our Support Specialists are DBS checked and Medical Industry Accredited (MIA).

CUI are a valued partner to the NHS and receive direct referrals for our free virtual or home fitting consultation service, for either our standard support garments or a bespoke garment. Our aim is to enhance the overall quality of life for our customers. CUI are committed to working ethically to supply best value to the NHS and maximise compliance.

Developed alongside Healthcare Professionals, our CUI Wear support garments are specifically designed to aid hernia prevention or support an existing hernia. CUI garments offer a balance between the appropriate level of support and comfort, whilst remaining easy to apply and wear with confidence.

Available on NHS Prescription

Hernia Support Garments are available on NHS Prescription (at your GP's discretion).

If you would like to request on prescription or have any question please contact our Customer Service Team on Freephone **0800 279 2050** or email: customersupport@cuiwear.com

If you wish to purchase CUI garments, please visit our website: www.cuiwear.com or contact our Customer Service Team who can take your order by telephone.

Please note due to local NHS CCG policy, not all GP's will authorise Ostomy underwear on prescription therefore you are encouraged to purchase Ostomy underwear to help reduce costs to the NHS – available to purchase from CUI individually or a discounted multipack of three.

Applicable to Customers living in Scotland - Only level 2 and level 3 garments are available on prescription in Scotland and all requests need to be authorised by your Stoma Care Nurse or Nurse Specialist. Please contact us for more details.

Unisex Anti-Roll Wraparound Ostomy/Hernia Support Belt	Firm Support	4
Unisex Anti-Roll Tube Ostomy/Hernia Support Belt	Firm Support	5
Unisex Adjustable Hole Anti-Roll Ostomy/Hernia Support Belt	Firm Support	6
Unisex Anti-Roll Mesh Ostomy/Hernia Support Belt	Moderate Support	7
Women's Hernia Support Girdles	Firm Support	8
Men's Hernia Support Girdles	Firm Support	9
Bespoke Service	Bespoke	10
Women's Ostomy Fulciolite Support Brief	Moderate Support	11
Women's Ostomy Ultra-Lite Support Brief	Moderate Support	12
Ostomy Seamless Support Wear	Seamless Light Support	13
Women's Ostomy High Waist Cotton Full Brief	Ostomy Underwear	14
Men's Ostomy High Waist Cotton Fitted Trunk	Ostomy Underwear	15
Women's Ostomy Swimsuit	Ostomy Swimwear	16
Men's Ostomy Swimshort	Ostomy Swimwear	17
Reviews / VAT Exemption		18
Garment and Ordering FAQs		19

Support Levels

Level 1, Light Support – Ideal for post-surgery to give all day gentle support. This support level can also be worn to sleep in to give comfort and reassurance.

Level 2, Moderate Support – A step up from level 1 support and can be worn all day or whilst carrying out usual activities that engage the core muscles, recommended to help hernia prevention.

Level 3, Firm Support – Is a firm support that is not restrictive and is recommended if you have developed a hernia or for more strenuous activities or a manual job role.

The Improved CUI Glove Design, Unisex Wraparound Anti-Roll Ostomy/Hernia Support Belt

The CUI Glove Design Hernia Support Belt is manufactured from a unique two-way airflow stretch fabric, which conforms and moulds over the stoma/hernia to provide a comfortable level 3, optimum firm support.

Key features

- Level 3 – firm support
- Breathable and comfortable two-way stretch fabric
- NEW IMPROVED Unique VELCRO® glove design for easy application, adjustment and removal of the belt
- NEW IMPROVED Anti-roll bands at the top and bottom of the belt to minimise movement of the belt
- Available in Black, White and Beige
- Range of sizes and depths
- Bespoke options include further variations in depth, additional sizes, added lace detail, etc, please contact us for more information.

Key benefits

- Improves pouch adherence, offers discretion and peace of mind
- Reduces bulges/herniation and streamlines any outline of appliances
- Reduces any dragging sensation from an existing hernia
- Helps reduce the risk of herniation, support a hernia or protect a hernia repair
- Helps to control a prolapsed stoma
- Helps support any weakened core muscles, post-surgery



Wraparound Support Belt

Size	Size Guide	16cm Depth	20cm Depth	26cm Depth
X Small	68cm - 74cm	F650	F550	F562
Small	75cm - 89cm	F651	F551	F563
Medium	90cm - 104cm	F652	F552	F564
Large	105cm - 120cm	F653	F553	F565
X Large	120cm - 135cm	F654	F554	F566
Bespoke (Any size)	Any size/tailor made	F580	F580	F580

Unisex Anti-Roll Tube Ostomy/Hernia Support Belt

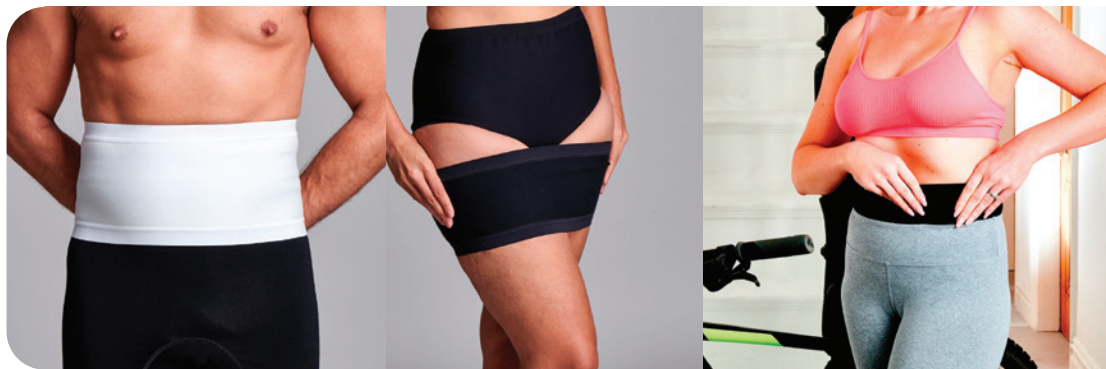
The CUI Tube Hernia Support Belt is manufactured from a cotton rich two-way breathable stretch fabric and offers a seamless, pull up waistband support which conforms and moulds over the stoma/hernia to provide a level 3, firm support.

Key features

- Level 3 – firm support
- Breathable and comfortable cotton rich two-way stretch fabric
- Seamless support, easy to pull on waistband style support belt
- Anti-roll
- Available in Black, White and Beige
- Bespoke options include lace detail, etc, please contact us for more information.

Key benefits

- Helps support any weakened core muscles, post-surgery
- Reduces any dragging sensation from an existing hernia
- Helps reduce the risk of herniation, support a hernia or protect a hernia repair
- Reduces bulges/herniation and streamlines any outline of appliances
- Improves pouch adherence, offers discretion and peace of mind
- Helps to control prolapsed stomas



Tube Support Belt

Size	Size Guide	15cm Depth	20cm Depth	26cm Depth
X Small	68cm - 74cm	F801	F813	F825
Small	75cm - 89cm	F802	F814	F826
Medium	90cm - 104cm	F803	F815	F827
Large	105cm - 120cm	F804	F816	F828
X Large	120cm - 135cm	F805	F817	F829
XX Large	135cm - 150cm	F806	F818	F830
Bespoke (Any size)	Tailor made	Please contact us	Please contact us	Please contact us

Colour Options - Black (B), White (W), Beige (BE) To order add colour code letter to product code. i.e F801B

Unisex Adjustable Hole Anti-Roll Ostomy/Hernia Support Belt

If you fall into the small percentage of ostomates that cannot tolerate a hernia support belt over your stoma, we have now developed a standard belt available with a pre-cut hole that can be adjusted to fit around a wide range of stoma pouches and flange sizes. The belt features an internal horseshoe shaped pad to offer extra support for a hernia around the stoma site (parastomal hernia). Simply place the hole around the stoma appliance and then secure in place with a VELCRO® tab fastening.

If your stoma is sited on the left hand side of your body you will need a left sided belt (hole on the left of the belt).

If your stoma is sited on the right hand side of your body you will need a right sided belt (hole on the right of the belt).

Key features

- Level 3 – firm support
- Adjustable hole size (7-8cm diameter) to fit most appliance flange sizes
- Easy to put on, easy to access your stoma appliance so you can wear with comfort and confidence
- Internal soft padding around the hole to provide additional support
- Anti-roll top and bottom bands
- Available in various sizes
- Available in Black, White and Beige
- Left or Right sided belts available (VELCRO® tab fastening is situated under the pouch)

Key benefits

- Easy to apply the support belt around the stoma appliance
- Easy access to stoma appliance
- Soft padded reinforced hole support
- Alternative support if you cannot tolerate a support garment over your stoma site



Adjustable Hole Support Belt

Size	Size Guide	20cm Depth	26cm Depth
X Small	68cm - 74cm	Left F916 - Right F910	Left F928 - Right F922
Small	75cm - 89cm	Left F917 - Right F911	Left F929 - Right F923
Medium	90cm - 104cm	Left F918 - Right F912	Left F930 - Right F924
Large	105cm - 120cm	Left F919 - Right F913	Left F931 - Right F925
X Large	120cm - 135cm	Left F920 - Right F914	Left F932 - Right F926
XX Large	135cm - 150cm	Left F921 - Right F915	Left F933 - Right F927
Bespoke (Any size)	Any size/tailor made	Please contact us	Please contact us

Unisex Anti-Roll Mesh Ostomy/Hernia Support Belt

The mesh version of the CUI Hernia Support Belt has all the same features and benefits as the standard anti-roll support belt, including the glove design for ease of application. The belt is manufactured from a lighter mesh stretch fabric for increased breathability offering a level 2, moderate support.

Key features

- Level 2 - moderate support with increased breathability
- Unique VELCRO® glove design for easy application, adjustment and removal of the belt.
- Available in depths of 15cm, 20cm and 26cm
- Available in Black, White and Beige

Key benefits

- Suitable for warmer climates
- Helps support the weakened core muscles, post-surgery
- Helps reduce the risk of herniation
- Streamlines any outline of appliances
- Improves pouch adherence, offers discretion and peace of mind
- Lighter fabric offers increased airflow



Mesh Support Belt

Size	Size Guide	15cm Depth	20cm Depth	26cm Depth
Small	75cm - 89cm	F715	F725	F735
Medium	90cm - 104cm	F716	F726	F736
Large	105cm - 120cm	F717	F727	F737
X Large	120cm - 135cm	F718	F728	F738
XX Large	135cm - 150cm	F719	F729	F739

Women's Hernia Low Waist and High Waist Support Girdle Brief

The Hernia Support Girdle Brief is manufactured from a unique two-way airflow stretch fabric and provides a level 3, firm support. The support girdle conforms and moulds over the stoma/hernia to provide excellent support and comfort and is available as a standard garment in either low or high waist options.

Key features

- Level 3 – firm support
- High waist and low waist options
- Available in Black, White and Beige
- Bespoke options include further variations in depth, additional sizes, lace and further bespoke options to meet individual requirements

Key benefits

- Supports any weakening of the abdominal muscles
- Helps to reduce the risk of herniation, support a hernia or protect a hernia repair
- Reduces bulges/herniation and streamlines any outline of appliances
- Improves pouch adherence, offers discretion and peace of mind
- High waist is ideal for a high sited stoma or a high abdominal herniation and Low waist option supports a low lying hernia
- Bespoke options can help support a rectal prolapse



Support Girdle Low and High Waist

Size	Size Guide Hips	Low Waist	High Waist
X Small	68cm - 74cm	F345	F305
Small	75cm - 89cm	F353	F313
Medium	90cm - 104cm	F361	F321
Large	105cm - 120cm	F369	F329
X Large	120cm - 135cm	F377	F337
Bespoke (Any size, option to add Lace)	Any size	F381	F381

Colour Options - Black (B), White (W), Beige (BE)



Men's Hernia Low Waist and High Waist Support Girdles

The CUI Hernia Support Girdle is manufactured from a unique two-way airflow stretch fabric and provides a level 3, firm support. The support girdle conforms and moulds over the stoma/hernia to provide excellent support and comfort and is available as a standard garment in either low or high waist options, brief or boxer style.

Key features

- Level 3 – firm support
- Available in low or high waist options
- Brief style without legs and Boxer style with legs
- Designed to sit above most stoma sites
- Bespoke options include additional colour options black and beige, further variations in depth, additional sizes and other bespoke options

Key benefits

- Supports any weakening of the abdominal muscles
- Helps to prevent herniation, support a hernia or protect a hernia repair
- Reduces bulges/herniation and streamlines any outline of appliances
- Improves pouch adherence, offers discretion and peace of mind
- Low waist ideal for a low lying herniation and high waist ideal for a high sited stoma or a high abdominal herniation



Support Girdle Brief and Boxer

Size	Size Guide Hips	Low Waist - Boxer	Low Waist - Brief	High Waist - Boxer	High Waist - Brief
X Small	68cm - 74cm	M105	M107	M101	M103
Small	75cm - 89cm	M113	M115	M109	M111
Medium	90cm - 104cm	M121	M123	M117	M119
Large	105cm - 120cm	M129	M131	M125	M127
X Large	120cm - 135cm	M137	M139	M133	M135
Bespoke (Any size)	Any size	M141	M141	M141	M141

Colour Options - Available in White - Bespoke options include Black and Beige, please contact us to discuss

Bespoke Service

Bespoke Hernia Support Belts & Girdles

Our Support Garments have been developed alongside Healthcare Professionals to comfortably support the abdominal muscles following abdominal surgery and particularly stoma surgery. Designed to reduce the risk of herniation, support a hernia or following a hernia repair. If our standard garment does not meet your needs, then our bespoke garments can be custom made here in Leicestershire by one of our dedicated team members to your individual specifications, incorporating our current specialised textiles. This helps to provide the balance between specific support and comfort so that it can be worn for even longer periods to support a large herniation or complex requirements.

Our service allows us to tailor make a belt or girdle incorporating one or more of the many features available, to create the best possible option to suit your individual needs.

Key features

- Made to measure to specific individual requirements
- Breathable and comfortable two-way stretch fabric
- Helps to support the weakened abdominal muscles, post-surgery
- Helps to reduce the risk of herniation, support or protect a hernia repair
- Reduces bulges/herniation and streamlines any outline of appliances

Key benefits

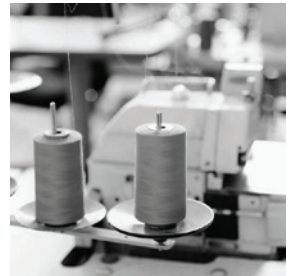
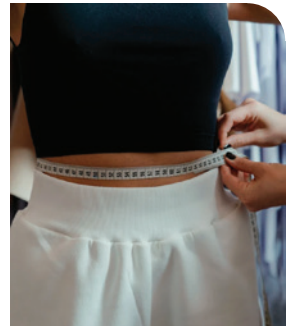
- Free home fitting service by our trained Support Specialists
- Available in Black, White and Beige

Bespoke garments are suitable for the following conditions: Colostomy, Urostomy, Ileostomy, Hernia, Perineal Hernia, Inguinal Hernia, Incisional Hernia, Hernia prevention, post-surgery, manual work, gardening, sports, lifting, excessive coughing, etc.

With so many bespoke options available and product variations, for a bespoke garment we recommend an individual consultation with one of our dedicated Support Specialists. We provide a free home fitting service in most of the UK. Please note that bespoke garments cannot be exchanged or refunded as they are made to measure on an individual basis.

The CUI Baby/Junior Support Belt is also available as a bespoke garment. It is lined with soft cotton fabric and is made to the baby or junior's specific measurements. This comfortable soft belt is designed as a security belt to hold the stoma appliance in place so your baby can carry out normal activities. Our dedicated Support Specialists can guide your nurse or yourself to measure for this belt, please contact us for more details.

To arrange a consultation with one of our experienced Support Specialists please contact us by email: customersupport@cuiwear.com
Or Freephone: 0800 279 2050



AVAILABLE ON PRESCRIPTION

Women's Ostomy Fulciolite Support Brief

Available on Prescription

11 Moderate Support
With internal pocket

Women's Ostomy Fulciolite Support Brief

The luxurious and desirable Fulciolite brief gives a Level 2, moderate support and is designed with an internal scooped pocket to support the stoma pouch appliance. Ideal for everyday wear and comfort.

Key features

- Level 2 – moderate support
- Internal scooped pocket to house stoma pouch
- High waist to sit above most stoma sites
- Fabric provides an equal stretch ensuring even distribution of support

Key benefits

- Provides all day comfort
- Keeps the stoma appliance securely in place to minimise noise
- Reduces direct skin contact from the stoma appliance to reduce any skin irritation
- Reduces any dragging weight of the stoma appliance
- Suitable for night wear



Fulciolite Brief

Size	Left Inner Pocket	Right Inner Pocket
8	FG01	FG10
10	FG02	FG11
12	FG03	FG12
14	FG04	FG13
16	FG05	FG14
18	FG06	FG15
20	FG07	FG16
22	FG08	FG17
24	FG09	FG18

Women's Briefs Size Guide

Size	Waist cms	Waist "	Hips cms	Hips "
8	67	26"	88	34"
10	72	28"	92	36"
12	76	30"	97	38"
14	81	32"	102	40"
16	86	34"	108	42"
18	91	36"	113	44"
20	97	38"	118	46"
22	104	41"	125	49"
24	112	44"	132	52"

Women's Ostomy Ultra-Lite Support Brief

Available on Prescription

12 Moderate Support
With internal pocket

Women's Ostomy Ultra-Lite Support Brief

The Ultra-Lite high waist brief is made from a soft white cotton Lycra providing a level 2, moderate support. These support briefs are designed with an internal scooped pocket to support the stoma pouch/appliance and reduce direct contact with the skin.

Key features

- Level 2 – moderate support
- Internal scooped pocket to house stoma pouch
- High waist to sit above most stoma sites
- The cotton Lycra fabric provides an equal stretch ensuring even distribution of support

Key benefits

- Provides all day comfort
- Keeps the stoma appliance securely in place to minimise noise
- Reduces direct skin contact from the stoma appliance to reduce any skin irritation
- Reduces any dragging weight of the stoma appliance
- Suitable for night wear



Ultra-Lite Brief

Size	Left Inner Pocket	Right Inner Pocket
8	CG01	CG10
10	CG02	CG11
12	CG03	CG12
14	CG04	CG13
16	CG05	CG14
18	CG06	CG15
20	CG07	CG16
22	CG08	CG17
24	CG09	CG18

Women's Briefs Size Guide

Size	Waist cms	Waist "	Hips cms	Hips "
8	67	26"	88	34"
10	72	28"	92	36"
12	76	30"	97	38"
14	81	32"	102	40"
16	86	34"	108	42"
18	91	36"	113	44"
20	97	38"	118	46"
22	104	41"	125	49"
24	112	44"	132	52"

Unisex Ostomy Seamless Support Boxer

Our Seamless range offers the ultimate in comfort with no seams or labels and a cotton lined gusset. Lightweight support ideal for post-operative wear or ongoing nightwear, providing comfort and reassurance. Unisex in design for optimum comfort.

Women's Ostomy Seamless Support Brief

Our Seamless range offers the ultimate in comfort with no seams or labels and a cotton lined gusset. Lightweight support ideal for post-operative wear or ongoing nightwear, providing comfort and reassurance.

Key features

- Level 1 – light support
- Comfort and support
- No seams or labels
- High waist to sit above most stoma sites
- Available in Black, White and Beige

Key benefits

- Suitable for day or night
- Provides light post-operative support
- Streamlines any outline of appliances
- Seamless support
- Improves pouch adherence and peace of mind



Unisex Seamless Support Boxers

Size	Size Guide Hips	Colour	Code	Colour	Code	Colour	Code
S/M	90cm - 100cm	White	CG31	Beige	CG36	Black	CG41
M/L	100cm - 110cm	White	CG32	Beige	CG37	Black	CG42
L/XL	110cm - 120cm	White	CG33	Beige	CG38	Black	CG43
XL/2XL	120cm - 130cm	White	CG34	Beige	CG39	Black	CG44
2XL/3XL	130cm - 140cm	White	CG35	Beige	CG40	Black	CG45

Women's Seamless Support Brief

Size	Size Guide Hips	Colour	Code	Colour	Code	Colour	Code
S/M	90cm - 100cm	White	FG31	Beige	FG36	Black	FG41
M/L	100cm - 110cm	White	FG32	Beige	FG37	Black	FG42
L/XL	110cm - 120cm	White	FG33	Beige	FG38	Black	FG43
XL/2XL	120cm - 130cm	White	FG34	Beige	FG39	Black	FG44
2XL/3XL	130cm - 140cm	White	FG35	Beige	FG40	Black	FG45

Women's Ostomy High Waist Cotton Full Brief and Shortie

The CUI high waist brief and shortie design underwear are both stylish and modern, made from soft cotton with an embossed Jacquard print. Designed with an internal scooped pocket to support the stoma pouch/appliance and reduce direct contact with the skin.

Key features

- Internal scoop pocket supports the stoma pouch appliance
- High waist design to sit above most stoma sites
- Internal pocket has convenient outlets for a drainable appliances
- Available in Black and White
- Suitable for either left or a right sited stoma

Key benefits

- Suitable for day and night
- Reduces any dragging weight of the stoma appliance
- Provides comfort by reducing direct skin contact from the stoma appliance to minimise any skin irritation
- Keeps the stoma appliance securely in place to minimise any noise

Please note due to local NHS CCG policy, not all GP's will authorise Ostomy underwear on prescription therefore you are encouraged to purchase Ostomy underwear to help reduce costs to the NHS – available to purchase from CUI individually or a discounted multipack of three.

Available to purchase as a discounted multipack of 3 – to purchase please visit our website or telephone our Customer Service Team.



Full Brief

Size	White	Black
8	CF19	CF49
10	CF20	CF50
12	CF21	CF51
14	CF22	CF52
16	CF23	CF53
18	CF24	CF54
20	CF25	CF55
22	CF26	CF56
24	CF27	CF57

Shortie

Size	White	Black
8	BS19	BS49
10	BS20	BS50
12	BS21	BS51
14	BS22	BS52
16	BS23	BS53
18	BS24	BS54
20	BS25	BS55
22	BS26	BS56
24	BS27	BS57

Women's Briefs Size Guide

Size	Waist cms	Waist"	Hips cms	Hips"
8	67	26"	88	34"
10	72	28"	92	36"
12	76	30"	97	38"
14	81	32"	102	40"
16	86	34"	108	42"
18	91	36"	113	44"
20	97	38"	118	46"
22	104	41"	125	49"
24	112	44"	132	52"

New symmetrical twin pocket style to allow you to wear the same garment to fit a left or right sited stoma.

Men's Ostomy High Waist Cotton Fitted Trunk

CUI Ostomy pouch support range underwear is made from soft cotton and secures the stoma pouch appliance with the internal pocket. The high waist trunks with fitted legs are stylish, modern and specifically designed to support the stoma appliance.

Grey Marl Trunks not currently available on prescription

Men's Ostomy High Waist Cotton Boxer

Men's Ostomy High Waist Cotton Boxer CUI Ostomy pouch support range underwear is made from soft cotton and secures the stoma pouch appliance with the internal pocket. The high waist boxer with loose legs are stylish, modern and specifically designed to support the stoma appliance.

Key features

- Internal scoop pocket supports the stoma pouch appliance
- High waist design to sit above the stoma site
- Loose leg boxer and fitted leg style
- Suitable for either left or a right sited stoma

Key benefits

- Suitable for day and night
- Reduces any dragging weight of the stoma appliance
- Provides comfort by reducing direct skin contact from the stoma appliance to minimise any skin irritation
- Keeps the stoma appliance securely in place to minimise any noise



Please note due to local NHS CCG policy, not all GP's will authorise Ostomy underwear on prescription therefore you are encouraged to purchase Ostomy underwear to help reduce costs to the NHS – available to purchase from CUI individually or a discounted multipack of three.

Available to purchase as a discounted multipack of 3 – to purchase please visit our website or telephone our Customer Service Team.

Boxer

Size	White	Navy
Small	CW11	CN11
Medium	CW12	CN12
Large	CW13	CN13
X Large	CW14	CN14
XX Large	CW15	CN15

Trunk

Size	Navy	Denim	Grey Marl
Small	LT11	LT26	LT43
Medium	LT12	LT27	LT44
Large	LT13	LT28	LT45
X Large	LT14	LT29	LT46
XX Large	LT15	LT30	LT47

Men's Boxer/Trunk Size Guide

Size	Waist cms	Waist inches
Small	77 - 82	30 - 32"
Medium	84 - 90	33 - 35"
Large	91 - 99	36 - 39"
X Large	102 - 107	40 - 42"
XX Large	108 - 114	43 - 45"

New symmetrical twin pocket style to allow you to wear the same garment to fit a left or right sited stoma.

Women's Ostomy Swimsuit

Fully Lined Women's Swimwear
With Internal Pocket

16 Ostomy Swimwear
With internal pocket

Women's Ostomy Swimsuit

This modern CUI swimwear is designed with the ostomate in mind. Made from a lightweight stretch fabric for quick drying and comfort. The internal pocket ensures the stoma pouch appliance is kept in place whilst swimming or bathing. This swimwear a great option for people living with a stoma, the ultra-flattering design offers a boost to comfort and practicality when compared to traditional swimwear.

Not available on prescription

Key features

- Fully lined
- Flattering ruche around the abdomen
- Universal internal pocket to house stoma pouch
- Available in Aqua and Black
- Available in sizes 8-24

Key benefits

- Ruching to help minimise outline of the stoma appliance
- Internal pocket to help support the stoma appliance
- Suitable for either colostomy, ileostomy or urostomy



Swimsuit Size Guide

Size	To Fit Bust cms	To Fit Bust inches
8	80cm - 82cm	32"
10	86cm - 88cm	34"
12	91cm - 93cm	36"
14	96cm - 98cm	38"
16	101cm - 103cm	40"
18	106cm - 108cm	42"
20	111cm - 113cm	44"
22	116cm - 118cm	46"
24	121cm - 123cm	48"

Men's Ostomy Swimshort

High Waisted Men's Swimwear
With Internal Mesh Pocket

17 Ostomy Swimwear
With internal pocket

Men's Ostomy Swimshort

The CUI Men's Ostomy Swimwear features a high waist designed to sit above the stoma site with an internal mesh pocket to support the stoma pouch appliance. These swimming shorts are made from a lightweight, quick drying fabric that ensures maximum comfort at all times.

Not available on prescription

Key features

- High waist
- Internal pocket
- Available in Black
- Available in sizes S - 2XL

Key benefits

- Designed to sit above the stoma site
- Internal pocket to help support the stoma appliance
- Quick drying
- Suitable for either colostomy, ileostomy or urostomy



*Model is also wearing the CUI bespoke belt,
ideal for swimming*

Swimshort Size Guide

Size	Waist cms	Waist inches
Small	77cm - 82cm	30 - 32"
Medium	84cm - 90cm	33 - 35"
Large	91cm - 99cm	36 - 39"
X Large	102cm - 107cm	40 - 42"
XX Large	108cm - 114cm	43 - 45"



Customer Reviews

I do love my CUI support belts. I'm an ITU nurse so it's a physically demanding job and I wear mine every shift, it's fab! - [Beth](#)

Just to advise that I have received my support belt and it is very comfortable, very easy to use and I am very, very pleased with it. I wish I'd had one years ago. - [John](#)

Nurse Reviews

We are very grateful for the service Kayte provides and the support she offers our stoma service. Kayte always responds to referrals promptly and we have received positive feedback from our patients. Many thanks for your on-going support, we truly value your service and expertise.

[Dani](#) - Nurse Specialist

CUI offer an excellent service to the patient but it also enables myself as a healthcare professional to offer my patients extra support that will benefit their long term recovery & enhance their quality of life. - [Nicola](#) - Stoma Care Nurse

VAT Exemption

For Direct Purchases

You may be eligible for VAT relief if you have a disability, long-term illness or a chronic condition. For more details, please visit our website where you can complete the VAT exemption form or contact our customer service team on [0800 279 2050](tel:08002792050)

Once we have received your completed form and confirmed eligibility VAT will be deducted from your purchase.



Garment FAQs

Will Support Wear affect my stoma?

The flexible textiles used in our support garments allow for a two-way stretch in the material and have been especially developed to allow your stoma to function as intended and give optimum support. In the rare case that you experience any issues, we can recommend our adjustable hole support belts that allows the pouch to sit on the outside of the support garment.

How many garments am I allowed on prescription?

This varies dependant on individual needs, local CCG policy and also at your GP's discretion. A guide is 2-3 hernia support garments per annum on NHS prescription, this allows you alternate support wear – one to wash, one to wear and a spare. If this is your first support garment we always recommend to start with one garment to ensure you are happy with comfort and fit before ordering additional garments. All our garments are also available to purchase directly from CUI by telephone or our online shop. Wherever possible you are encouraged to purchase Ostomy underwear to help reduce costs to the NHS and we offer cost saving multipacks for added value for any direct purchases.

What are the care instructions?

All of our support garments can be machine washed at a maximum 40°C and air dried or hand washed if preferred to ensure longer lasting performance. Any Velcro should be closed during washing. For best results we suggest garments should be placed in a wash bag.

What if my size changes or if I have further surgery?

It is natural for our body shape to change over a period of time and if you find that your garment no longer provides the required support or you would like to try an alternative support garment due to a change in circumstances, please contact our Customer Service Team to arrange a re-measure/review with your local Support Specialist.

Ordering FAQs

How can I purchase the garment or receive it on prescription?

You can request on prescription by completing the online form on the CUI website or contact our Customer Service Team on [0800 279 2050](tel:08002792050). If you wish to purchase a garment, you can use the CUI online store www.cuiwear.com or place an order by phoning our Customer Service Team.

Additionally, you can contact your doctor or nominated stoma supplies delivery company to request a prescription by quoting the CUI product code. The prescription can go directly to our office or to your delivery company.

How long does it take from ordering the garment to receiving it?

Direct orders of standard garments should be dispatched within 1-2 weeks of receiving prescription/payment. If you have ordered a bespoke garment, this can take up to a maximum of 4 weeks from receipt of the prescription/payment.

How do I order additional garments?

Please contact us to discuss your requirements with your dedicated Support Specialist on Freephone [0800 279 2050](tel:08002792050).



@CUIWear @CUIWear @CUIWearUK

Follow us on Social Media

Our Support Garments have been developed alongside Healthcare Professionals to comfortably support the abdominal muscles following abdominal surgery and particularly stoma surgery. Designed to reduce the risk of herniation, support a hernia or following a hernia repair.

Free fitting consultations and advice service for our hernia support garments carried out by our dedicated CUI Support Specialists – please contact us to arrange a consultation.



CUI International, Medalin Group
Caldow House, Crescent Road
Lutterworth, LE17 4PE

customersupport@cuiwear.com

Freephone 0800 279 2050

AVAILABLE ON NHS PRESCRIPTION

www.cuiwear.com

CUI Wear® and Fulcional® are registered
trademarks of CUI International Limited