

# LEISURE 3

## USER MANUAL

Please read this manual thoroughly before using this product and keep it for future reference.

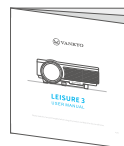
# PACKING LIST



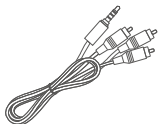
LEISURE 3



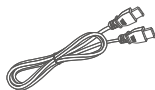
Remote  
(Batteries Not Included)



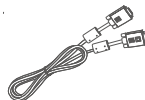
User Manual



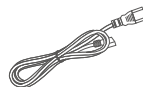
AV Cable



HDMI Cable



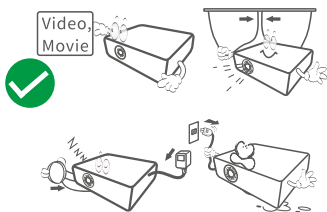
VGA Cable



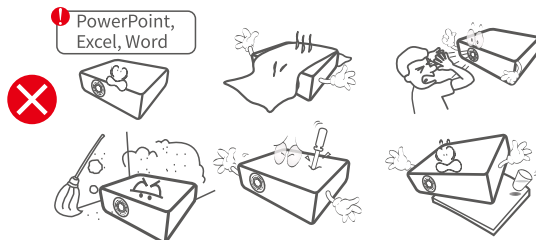
Power Cable

## NOTICE

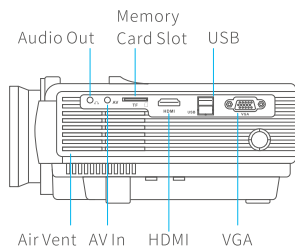
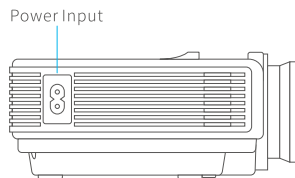
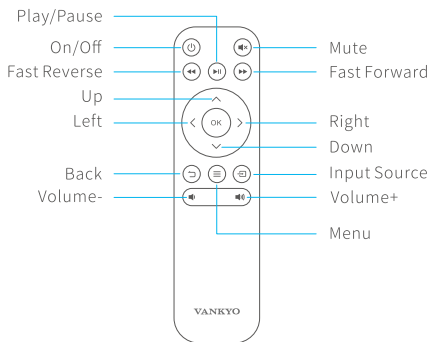
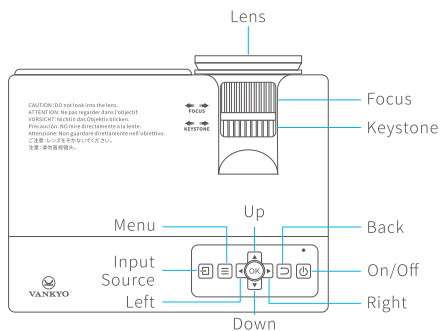
### Recommended



### NOT Recommended

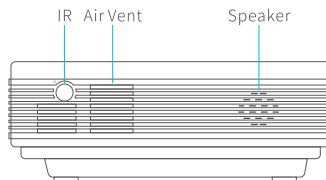


# FUNCTION OVERVIEW

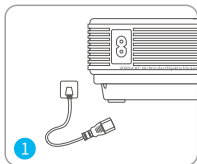


HDMI

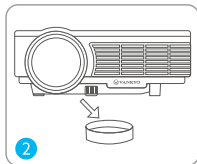
VGA



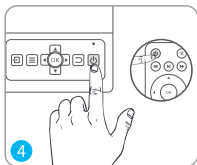
# QUICK START



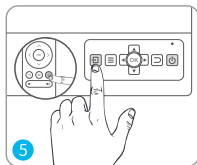
Plug the power cord into an outlet.



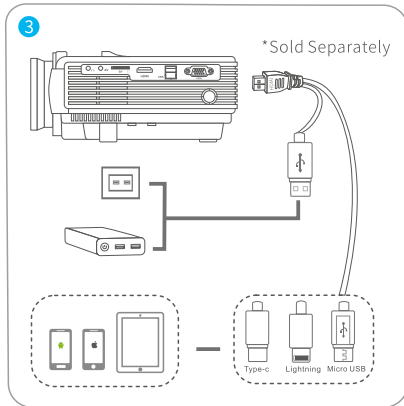
Take off the lens cover.



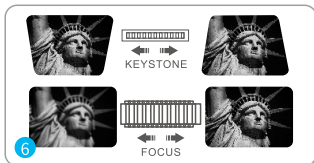
Press the **Power Button** to turn on the projector.



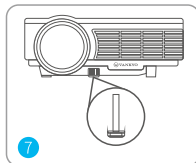
Select the correct input source to project your device.



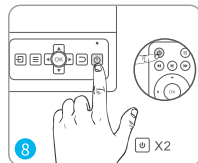
Connect your device to the projector correctly.



Adjust the keystone and focus ring to get the best image performance.



Adjust the kickstand accordingly.

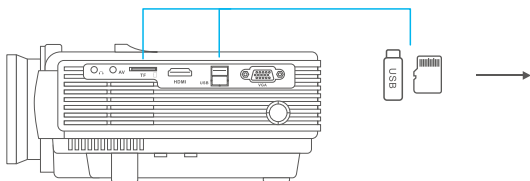


Press the **Power Button** twice to turn off the projector.

# INPUT SOURCE

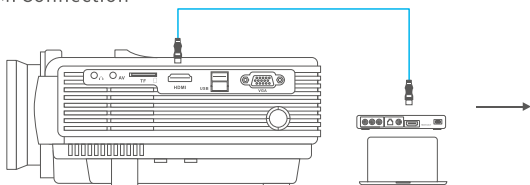
Press  on the projector/remote to enter the interface of Input Source.

## A. Multimedia Connection



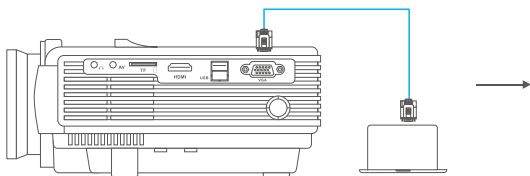
Input Source
VGA
HDMI
AV
USB
TF

## B. HDMI Connection



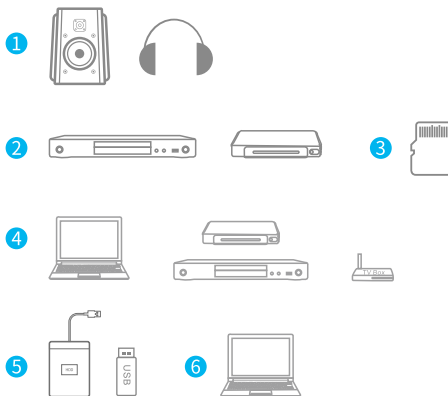
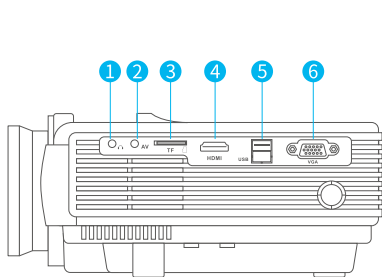
Input Source
VGA
HDMI
AV
USB
TF

## C. VGA Connection

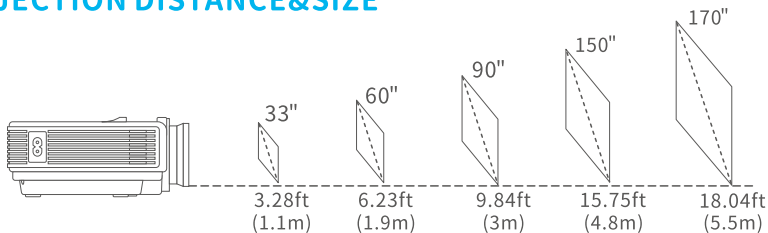


Input Source
VGA
HDMI
AV
USB
TF

## PROJECTOR CONNECTION



## PROJECTION DISTANCE&SIZE



\* The recommended projection distance varies with different projection contents. Please adjust the distance between the wall/screen and the projector properly as needed.

\* Ambient darkness will improve the clarity of the projected images.

# SPECIFICATION

<b>Display Technology</b>	LCD	<b>Light Source</b>	LED
<b>Resolution</b>	Native 800 x 480	<b>Input Signal</b>	576i、576P、720i、720P、1080i、1080P
<b>Installation Type</b>	Front/Rear/Ceiling	<b>Aspect Ratio</b>	4:3/16:9/Auto
<b>Focus</b>	Manual	<b>Keystone</b>	±15°
<b>Speaker</b>	2W/8ohm x 2	<b>Power Supply</b>	AC 100-240V, 50/60Hz
<b>Unit Dimension</b>	198 x 148.6 x 68mm (7.8 x 5.9 x 2.7inches)	<b>Unit Net Weight</b>	0.9kg(1.98lb)
<b>Photo Format Supported</b>	BMP/JPG/PNG/GIF/JPEG	<b>Audio Format Supported</b>	ACC/MP2/MP3/PCM/FLAC/WMA
<b>Video Format Supported</b>	AVI/MP4/MKV/FLV/MOV/ RMVB/3GP/MPEG1/ MPEG2/H.264/XVID	<b>Ports</b>	HDMI In x 1/USB Port x 1/VGA Port x 1/ AV In x 1/Audio Out x 1/Memory Card Slot x 1
<b>Mounting Screw</b>	M4 Metric	<b>Number of Screw</b>	1

## VANKYO SUPPORT

North America [support@ivankyo.com](mailto:support@ivankyo.com)

United Kingdom [support.uk@ivankyo.com](mailto:support.uk@ivankyo.com)



[www.ivankyo.com](http://www.ivankyo.com)



[@VankyoOfficial](https://www.facebook.com/VankyoOfficial)



[VANKYO](https://www.youtube.com/VANKYO)