

LEISURE 3W

USER MANUAL

Please read this manual thoroughly before using this product and keep it for future reference.

PACKING LIST



LEISURE 3W



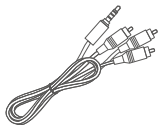
Remote
(Batteries Not Included)



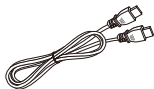
Carrying Bag



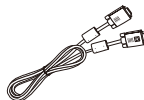
User Manual



AV Cable



HD Cable



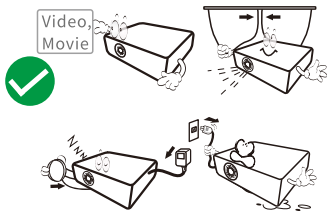
VGA Cable



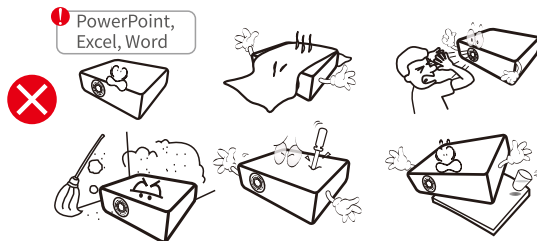
Power Cable

NOTICE

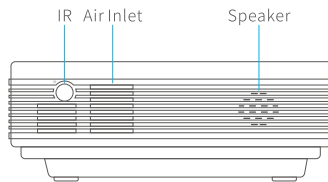
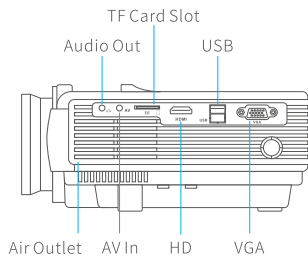
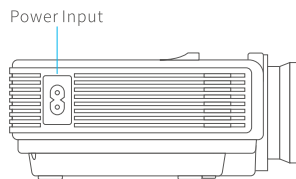
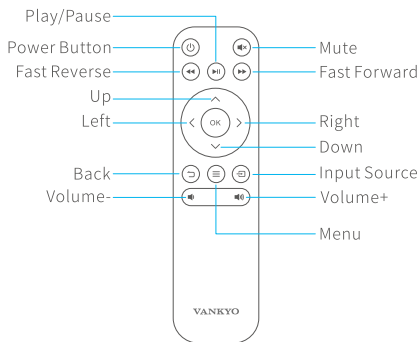
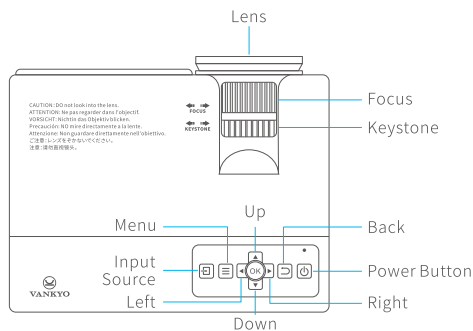
Recommended



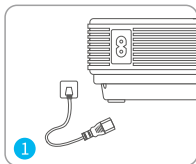
NOT Recommended



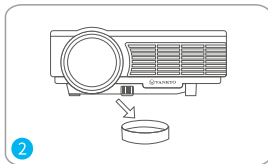
FUNCTION OVERVIEW



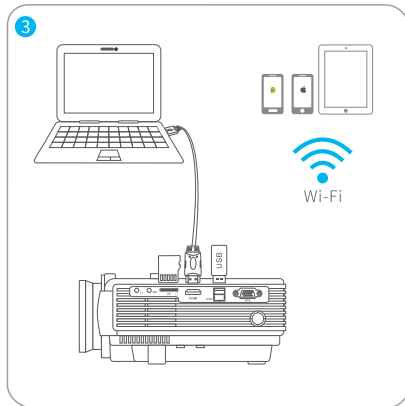
QUICK START



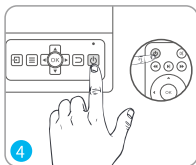
1 Plug the power cord into an outlet.



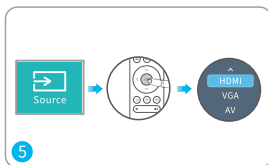
2 Take off the lens cover.



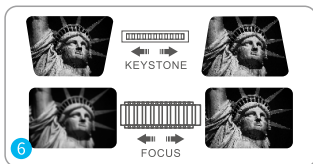
3 Connect your device to the projector correctly.



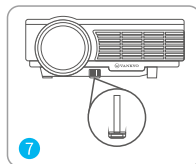
4 Press the **power button** to turn on the projector.



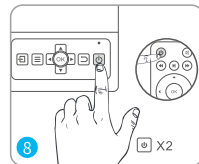
5 Select the correct input source to project your device.



6 Adjust the keystone and focus ring to get the best image performance.

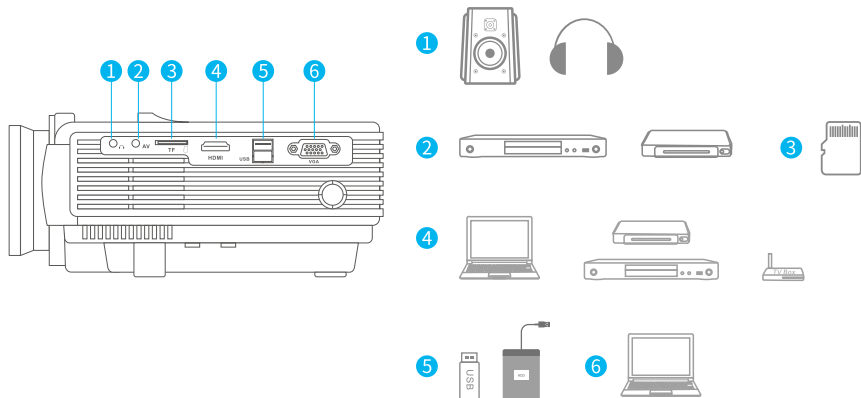


7 Adjust the kickstand accordingly.

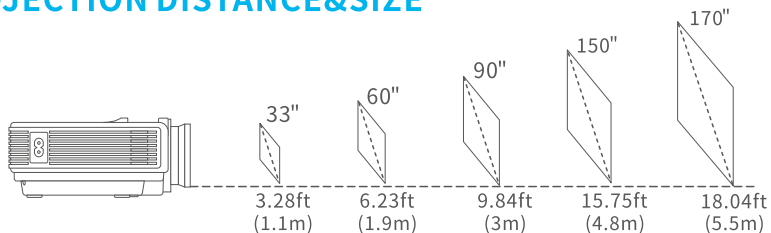


8 Press the **power button** twice to turn off the projector.

PROJECTOR CONNECTION

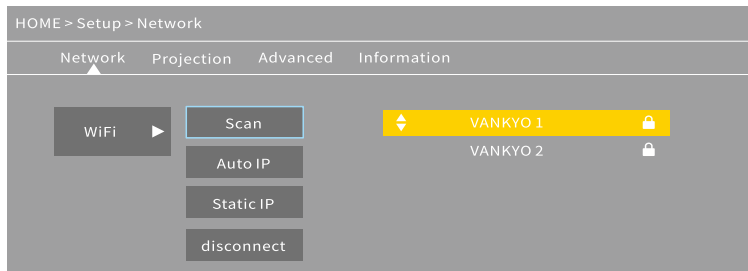


PROJECTION DISTANCE&SIZE



The recommended projection screen is around 90 inches with a projection distance of around 9.84ft. Ambient darkness will improve the clarity of the projected images.

WI-FI CONNECTION

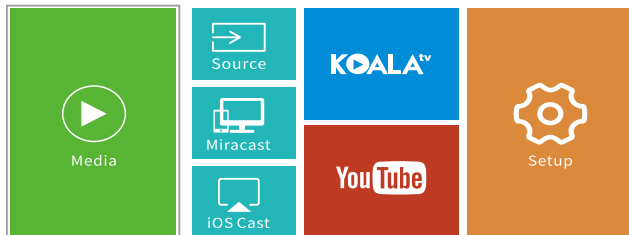


1. Go to **Homepage** > **Setup** > **Network** > **WiFi**, then select **Scan** to display the Wi-Fi list.
2. Press the **Up/Down** button to select your Wi-Fi, then press the **OK** button to continue.
3. Enter the correct password, then select **Confirm** to get Internet connection.

MULTIMEDIA CONNECTION

Projecting from a USB Disk/microSD card

1. Turn on the projector and insert your USB disk/microSD card into the USB port/TF card slot.
2. Go to **Homepage** to select **Media**, it will display an interface for projecting from a USB Disk/microSD card.





3. Select the category of the file you would like to project accordingly.

- * To play the video, select **Movie**, then find your video file and play it by pressing the **OK** button.
- * To play the audio file, select **Music** to find your audio file. Select it first by pressing the **OK** button, then select the **Play** option to start playing.
- * To project photo, select **Photo**, then find your photo and play it by pressing the **OK** button.
- * To project text, select **Text**, then find your text file and open it by pressing the **OK** button.

Different File Formats Supported

Text Format Supported: TXT

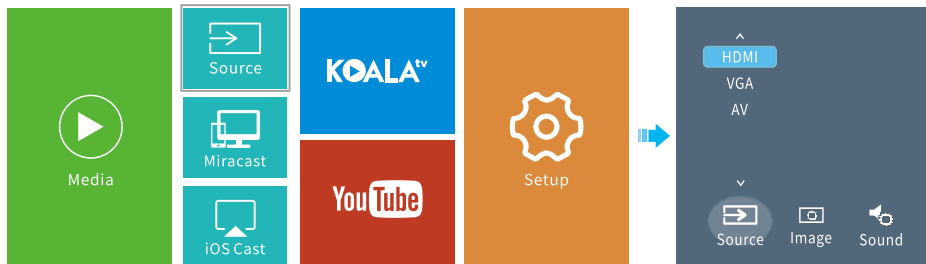
Image Format Supported: BMP/JPG/PNG/GIF/JPEG

Audio Format Supported: ACC/MP2/MP3/PCM/FLAC/WMA

Video Format Supported: AVI/MP4/MKV/FLV/MOV/RMVB/3GP/MPEG1/MPEG2/H.264/XVID

Projecting from HDMI Input Connection

1. Turn on the projector, then connect the projector to your device with the provided HDMI cable.
2. Go to **Homepage**, then select **Source > HDMI** to project the contents from your device to the screen/wall.



Projecting from VGA Input Connection

1. Turn on the projector, then connect the projector to your device with the provided VGA cable.
2. Go to **Homepage**, then select **Source > VGA** to project the contents from your device to the screen/wall.

Projecting from AV Input Connection

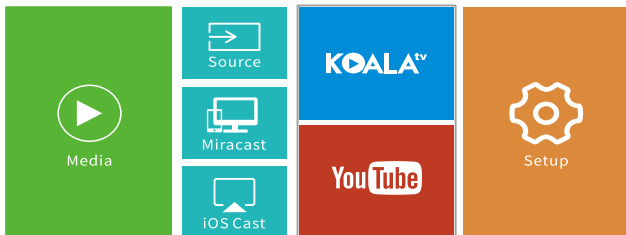
1. Turn on the projector, then connect the projector to your device with the provided AV cable.
2. Go to **Homepage**, then select **Source > AV** to project the contents from your device to the screen/wall.

Play Videos in KOALA and YouTube

Go to **Homepage > KOALA/YouTube** to play videos after the projector is connected to your Wi-Fi.

Tip:

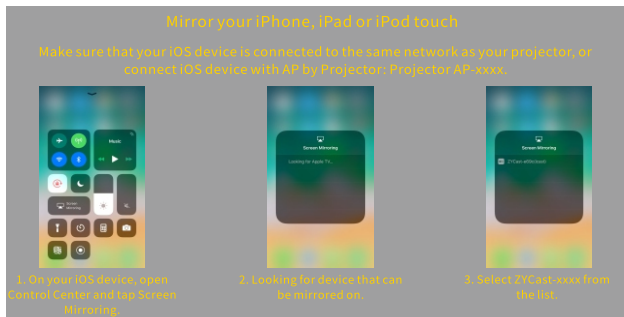
Press the **Menu** button on the remote to get back to the Home Page of KOALA/YouTube.



SCREEN MIRRORING

For iOS System

1. Connect your iOS device and the projector to the same Wi-Fi network.
2. Go to **Homepage > iOS Cast** to display the following interface.



3. Swipe your iOS device up, then tap **Screen Mirroring/AirPlay Mirroring** and search for the projector.
4. Select **ZYCast-xxxx(icast)** from the searching list.
5. Your iOS device display will be projected on the wall/screen.

For Android system

To activate this function, please make sure your android device supports **Multi-screen/Wireless display**. Names may differ from different Android devices.

1. Turn the **Wi-Fi** to **ON** status in the settings of your Android device. To make a smoother streaming, please do not connect to any Wi-Fi on your projector.
2. Go to **Homepage > Miracast** to enter the following interface.



3. Activate **Multi-Screen** function in your Android device and search for the projector.
4. Select **ZYCast-xxxx(mcast)** from the searching list.
5. Your Android device display will be projected on the wall/screen.

Note: An extra HDMI adapter is needed when mirroring your device through wired connection.

SETTINGS

Go to [Homepage](#) > [Setup](#) to adjust the settings of your projector.

Network

Connect the projector to your Wi-Fi.

Projection

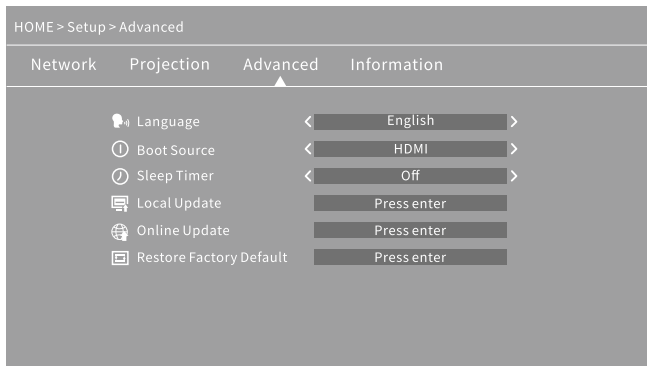
Set up projection mode.

Advanced

Change language, select boot source, set up sleep timer, update firmware, make a factory restore, etc..

Information

Check the model number, memory, software version, etc..



SPECIFICATION

Display Technology	LCD	Light Source	LED
Resolution	Native 800 x 480	Input Signal	576i, 576P, 720i, 720P, 1080i, 1080P
Installation Type	Front/Rear/Ceiling	Aspect Ratio	4:3/16:9/Auto
Focus	Manual	Keystone	±15°
Speakers	2W/8ohm x 2	Power Supply	AC 100-240V, 50/60Hz
Unit Dimension	198 x 148.6 x 68mm (7.8 x 5.9 x 2.7inch)	Unit Net Weight	0.9kg(1.98lb)
Photo Format Supported	BMP/JPG/PNG/GIF/JPEG	Audio Format Supported	ACC/MP2/MP3/PCM/FLAC/WMA
Video Format Supported	AVI/MP4/MKV/FLV/MOV/ RMVB/3GP/MPEG1/ MPEG2/H.264/XVID	Ports	HD In x 1/USB Port x 1/VGA Port x 1/ AV In x 1/Audio Out x 1/TF Card Slot x 1
Mounting Screw	M4 Metric	Number of Screw	1

TROUBLESHOOTING GUIDE

1. Blurry Image

- * Adjust focus ring/keystone.
- * Projector and screen/wall must be in effective distance.

2. Remote Unresponsive

- * Make sure remote points at IR receiver directly.
- * Do not cover IR receiver.
- * Try a new pair of batteries.

3. Mobile Connection

iOS: Genuine lightning to HDMI cable

Android: Micro USB to HDMI adapter/Type C to HDMI cable

4. Upside Down Images

Go to **Home > Setup > Projection > Projection Mode** to flip the projection image.

FCC Statement

This device complies with Part 15 of the FCC Rules. Operation is subject to the following two conditions: (1) This device may not cause harmful interference, and (2) this device must accept any interference received, including interference that may cause undesired operation.

NOTE: This equipment has been tested and found to comply with the limits for a Class B digital device, pursuant to Part 15 of the FCC Rules. These limits are designed to provide reasonable protection against harmful interference in a residential installation. This equipment generates uses and can radiate radio frequency energy and, if not installed and used in accordance with the instructions, may cause harmful interference to radio communications. However, there is no guarantee that interference will not occur in a particular installation. If this equipment does cause harmful interference to radio or television reception, which can be determined by turning the equipment off and on, the user is encouraged to try to correct the interference by one of the following measures:

- Reorient or relocate the receiving antenna.
- Increase the separation between the equipment and receiver.
- Connect the equipment into an outlet on a circuit different from that to which the receiver is connected.
- Consult the dealer or an experienced radio/TV technician for help.

WARNING: Any changes or modifications not expressly approved by the party responsible for compliance could void the user's authority to operate this equipment.

IC statement

This device complies with RSS247 of Industry Canada. Cet appareil se conforme à RSS247 de Canada d'Industrie. This device complies with Industry Canada license-exempt RSS standard(s). Operation is subject to the following two conditions: (1) this device may not cause interference, and (2) this device must accept any interference, including interference that may cause undesired operation of the device. appareils radio exempts de licence. Son fonctionnement est sujet aux deux conditions suivantes: (1) le dispositif ne doit pas produire de brouillage préjudiciable, et (2) ce dispositif doit accepter tout brouillage reçu, y compris un brouillage susceptible de provoquer un fonctionnement indésirable.

The device must not be co-located or operating in conjunction with any other antenna or transmitter.

CAUTION



The symbol indicates AC voltage



RECYCLING

This product bears the selective sorting symbol for Waste electrical and electronic equipment (WEEE). This means that this product must be handled pursuant to European directive 2012/19/EU in order to be recycled or dismantled to minimize its impact on the environment.

VANKYO SUPPORT



www.ivankyo.com



@VankyoOfficial



VANKYO



North America support@ivankyo.com

United Kingdom support.uk@ivankyo.com

日本 support.jp@ivankyo.com