

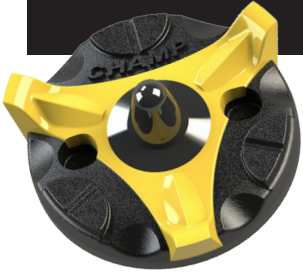
CHAMP

PRO Stinger™

SCORPION

TM

INSERT SYSTEMS INFORMATION



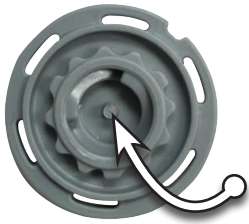
The Champ ProStinger golf cleat is available for Fast Twist® 3.0 and Fast Twist® insert systems. There are several important distinctions between the two as highlighted in the sections below. ***It is very important to understand the differences to avoid installing the incorrect cleat into an incompatible receptacle. (See important note below*)***



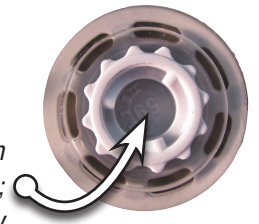
RECEPTACLES

The Fast Twist® 3.0 receptacle has a shallow insertion cavity and a pin in the centre to prevent insertion of Fast Twist® Cleats.

Fast Twist® 3.0 cleats will fit into a Fast Twist® receptacle, but Fast Twist® cleats will not fit into a Fast Twist® 3.0 receptacle.*



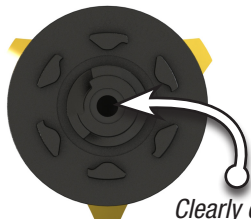
Visible pin in centre of receptacle; Shallow insertion cavity*



No visible pin in centre of receptacle; Deep insertion cavity

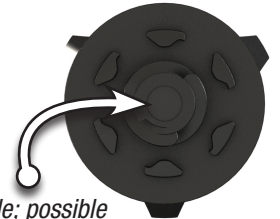
Do not attempt to insert a Fast Twist® cleat into a Fast Twist® 3.0 receptacle!*

CLEAT BACK



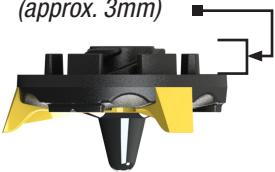
Clearly defined hole in cleat post

Fast Twist® 3.0 cleats have a defined hole in the back of the cleat to allow for insertion in the FT3 receptacle. Fast Twist® cleats have a solid (or perhaps slightly indented) post.



No hole; possible slight indentation

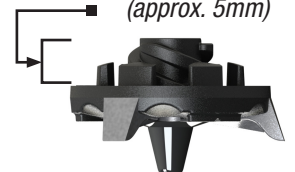
Short insertion profile (approx. 3mm)



CLEAT PROFILE

Fast Twist® 3.0 cleats have a definitively shorter profile than Fast Twist® cleats, which enables FT3 cleats to work in either receptacle.

Tall insertion profile (approx. 5mm)



INSTALLATION

For Fast Twist® 3.0, thread the cleat into the receptacle by hand and twist until it **clicks 1 time**. Then, use a cleat wrench to turn the cleat clockwise until it **clicks 1 additional time**, locking the cleat into place.

For Fast Twist®, thread the cleat into the receptacle by hand and twist until it **clicks 1 time**. Then, use a cleat wrench to turn the cleat clockwise until it **clicks 2 additional times**, locking the cleat into place.

***SPECIAL NOTE: Certain models of golf shoes made by Nike and Ecco have Slim-LOK® receptacles, which look similar to Fast Twist® 3.0 receptacles, but have no pin, and are too shallow to accept Fast Twist® cleats.**

PrideSports Europe: +44 1827 56544 • www.champspikes.co.uk