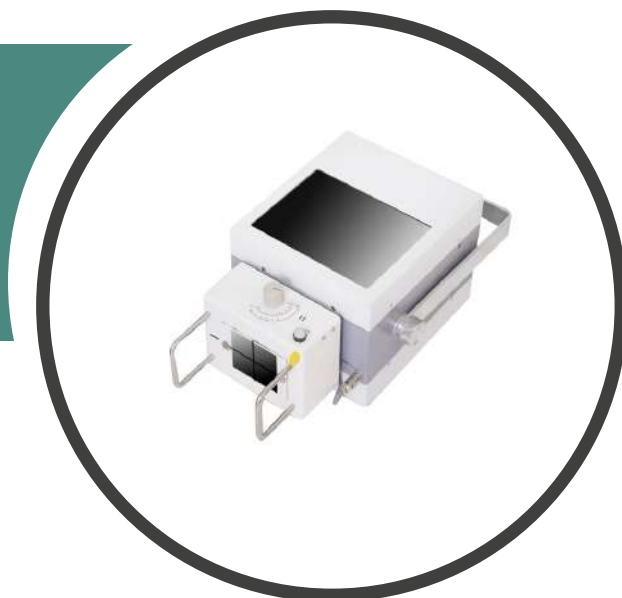




# IVEX4000

## Mobile Veterinary Digital X-ray System



Description	Parameter
Output Power	5.3kw
Input Voltage	220VAC, 50/60Hz
Inverter Frequency	70kHz
Rotor	Fixed Rotor
kV Range	40~125kV
Votage Range	10~100mA
Current Range	1~4000ms
mAs Product	0.1~200mAs
SID Range	100cm
Large Focus	1.8mm(Power:1270W)
Small Focus	0.6mm(Power:5300W)
Anode Angle	15°
Anode Heat Capacity	42 KHU
APR Number	>18 (6Parts)
Communication Interface	RS-232
Screen Size	10" LCD Touch Screen
Weight	15Kg
Size	280*255*220(mm)

# Flexibility

To Maximize Veterinary X-ray Application





### Ease of Transportation

The Keen Ray DR50M Vet is quite light, with a storage box, which makes it easy-to-transported.



### Flexible Application

The Keen Ray DR50M Vet is flexible and convenient for use, which is better for various fields of application in small animal practices and veterinary clinics.



### Simple Design

IVEX4000 is designed for simple assemblage, which includes a portable stand with four universal wheels and a suspension assembly head.



### Small Occupied Space

The area used and the size of X-ray system are pretty small, which is idealized for storage.



### Interactive Design

Visualized operation with 10" touch screen can better your using experience.





## **CONTACT US**

[sales@ivetmedical.com](mailto:sales@ivetmedical.com)  
[www.ivetmedical.com](http://www.ivetmedical.com)

### **Dubai**

+971 50 523 8048

DSO-IFZA, Dubai Silicon Oasis, UAE.

### **Lebanon**

+961 1 497 740

3rd floor, Sukkariah Center, Dekwaneh, Lebanon.

### **Armenia**

+374 93 720991

21, 1 Bagrevand St, Yerevan, Armenia.