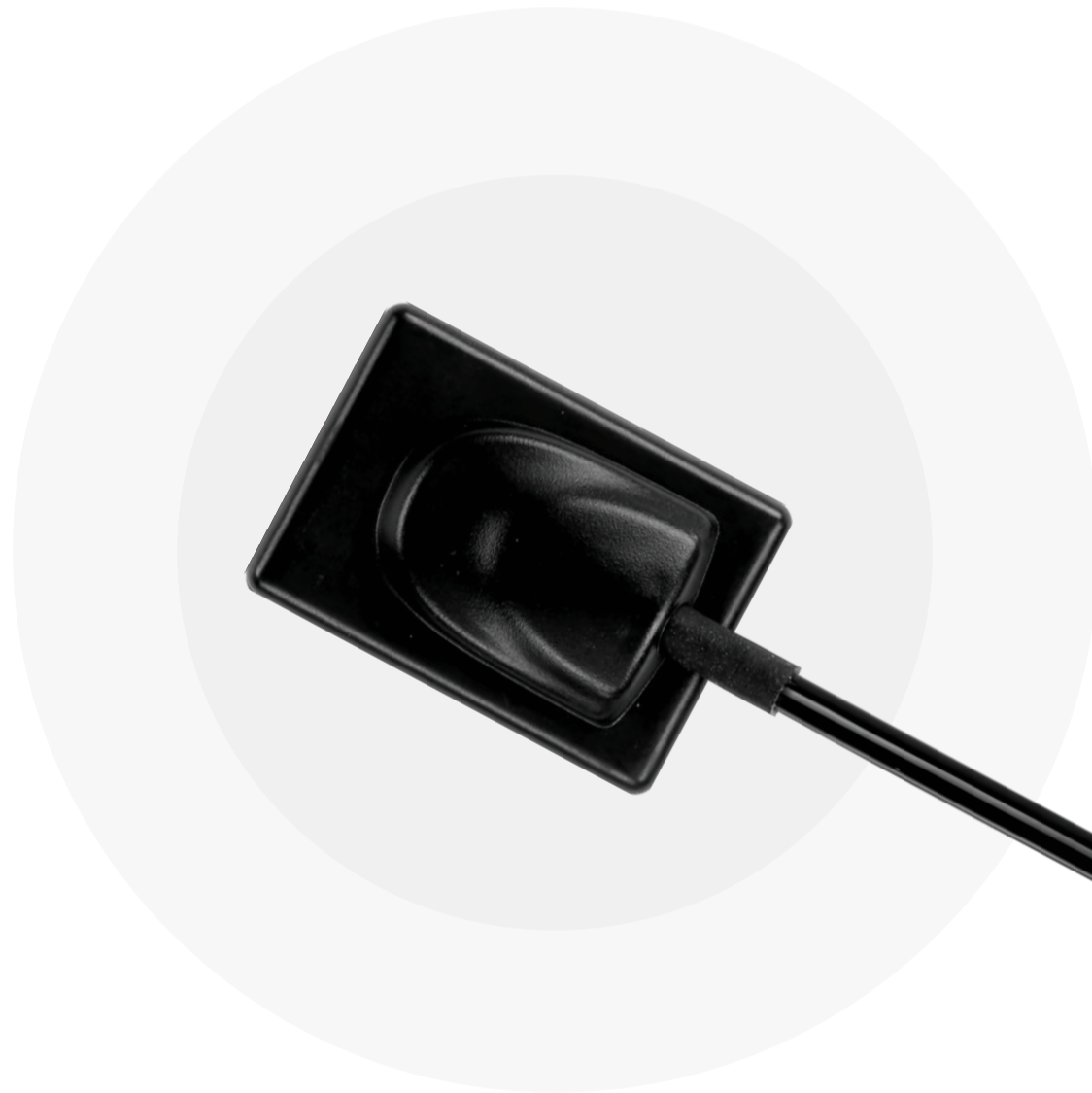




Your true partner in animal healthcare.

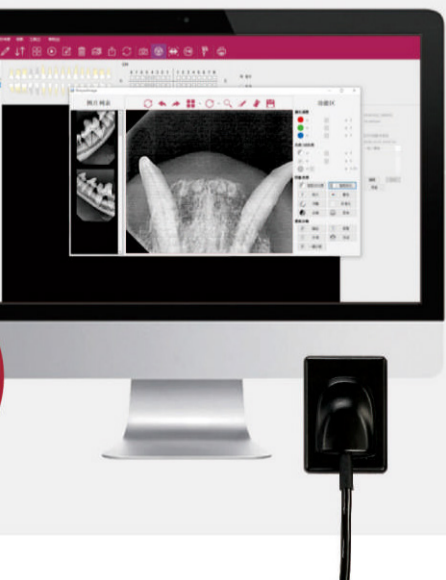
# SEE THE UNSEEN

## DENTAL IMAGING SYSTEM



**SPECIFICALLY MADE FOR ANIMAL'S TEETH**

### 5 CORE ADVANTAGES



**Full-Tooth  
Imaging**



**High-Definition  
Imaging**



**APS CMOS  
Sensor**

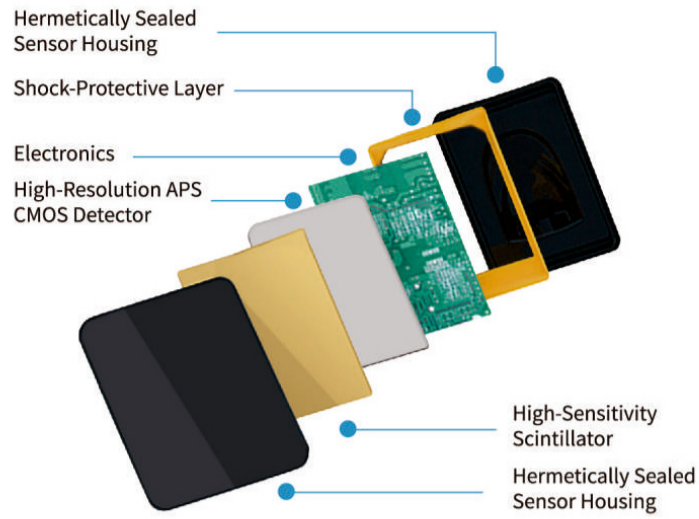


**Powerful  
Software**

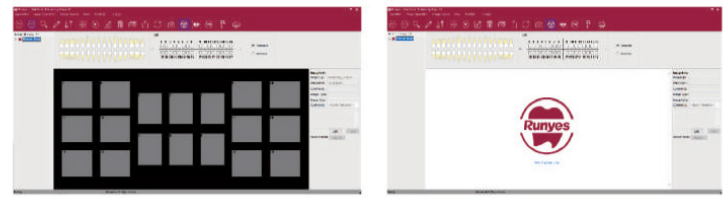


**IPX7**

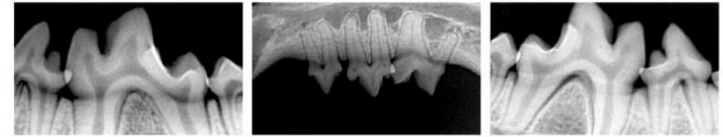
## > POWERFUL FUNCTIONS



## > POWERFUL IMAGE MANAGEMENT SOFTWARE



## > HD IMAGING



## > HIGH ADAPTABILITY

Available for liquid disinfectant immersion disinfection

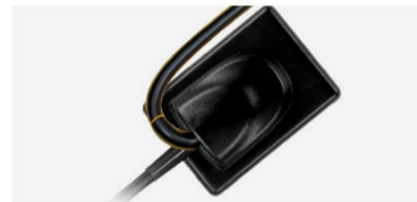


The sensor is tightly stitched  
Repeated verification by engineers  
Reach IPX7 waterproof level  
Can be disinfected with immersion  
Avoid secondary cross infection

### Compatibility

Applicable for almost all x-ray machines on the market.

## > SUPER TOUGHNESS



Tens of thousands of tests have been carried out according to the actual use, and the product has super toughness and durability.

PARAMETERS		
Model	DR730	DR750
Chip Type	AOS CMOS	APS CMOS
Pixel Size	18.5um	18.5um
Dimension	38x28.5x6mm	45x32.5x6mm
Active Area	30x22.5mm	35x26mm
Active Pixel Array	1600x1200mm	1402x1888mm
Image Pixel	1604x1204mm	1402x1888mm
Voltage (through USB connection)	5.0V±0.5V	5.0V±0.5V
Electricity Current (through USB connection)	≤500mA	≤500mA
Power	≤1W	≤1W
Digitization	12/14/16bit	12/14/16bit
Imaging Time	3~4s	3~4s
Resolution	27lp/mm	27lp/mm
Signal Output	USB	USB

### DUBAI

+971 50 523 8048

DSO-IFZA, Dubai Silicon Oasis, UAE.

### LEBANON

+961 1 497 740

3rd floor, Sukkariah Center, Dekwaneh, Lebanon.

### ARMENIA

+374 93 720991

21, 1 Bagrevand St, Yerevan, Armenia.