

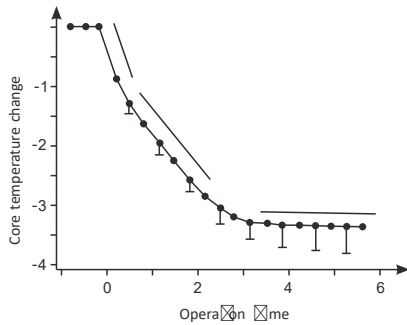
# Model M600V > warming system



Perioperative  
temperature management

## What is the hypothermia?

Hypothermia is defined by Surgical Care Improvement Project ( SCIP ) as a core body temperature less than 36°C . It occurs for a number of reasons , including



- Anesthesia
- Patients getting cold on the ward when waiting to go to theatre
- The use of non-warmed intra-venous ( IV ) and irrigation fluids
- Operating room temperature
- Exposure of the body interior during surgery

## The importance of maintaining normothermia

Maintaining a patient's normothermia is necessary to reduce the risk of adverse effects associated with hypothermia. Hypothermia can lead to significant complications:

**Shivering**

**Arrhythmias**

**Coagulopathy**

**Increase the risk of surgical site infections (SSI)**

**Increased cardiovascular stress**

**Delay wound healing**

**Prolonged time to recovery**

Model M600V warming system provides a comprehensive solution that can effectively prevent and treat hypothermia.



M600V system consist of Veterinary Warming System and warming blanket. This unit is connected by a rubber hose to blanket that is heated by circulating warm air, thus maintaining a patient's core body temperature.



## Features

### Safe

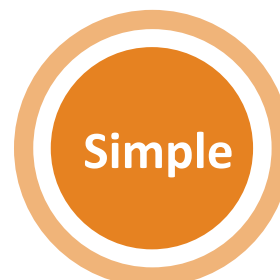
- Advanced dual temperature sensor design
- Fault alarms: over-temperature, under-temperature, filter maintenance
- Air filter to keep effective filtration
- Precise temperature settings controlled within  $\pm 1.5^{\circ}\text{C}$

### Powerful

- Reaching the set temperature within 5 minutes
- Particular heat output design to have quicker heat transfer
- Unique micro-holes on the surface of the blanket to keep heat evenly distribute
- Wide range of blanket shapes and sizes

### Simple

- Intuitive operation, almost training free
- Can be clamped to an IV pole or placed on a hard surface



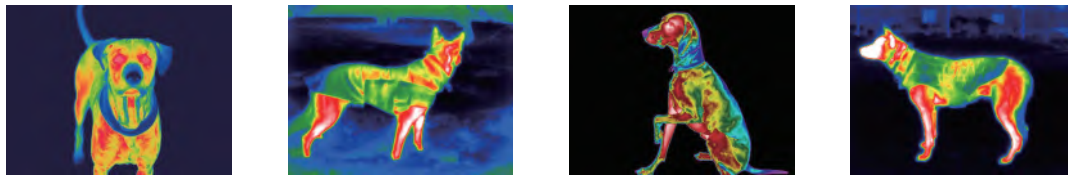
## Application

---



## Infra-red image of blanket showing uniform heat

---



 Perioperative  
temperature management



## Specifications

Model No.	M600V
Temperature Modes	Five:32°C,35°C,38°C,41°C, Ambient air
Airflow Modes	High: ≥30CFM
	Med: ≥28CFM
	Low: ≥26CFM
Interface	OLED Display
Noise	≤52dB (High fan setting)
The Length of Hose	2m
Power Supply	220V,50Hz
Weight	7.7kg
Controller Dimensions	Height: 33.0cm
	Width: 37.0cm
	Depth: 29.0cm



### CONTACT US

sales@ivetmedical.com  
www.ivetmedical.com

**Dubai**  
+971 50 523 8048  
DSO-IFZA, Dubai Silicon Oasis, UAE.

**Lebanon**  
+961 1 497 740  
3rd floor, Sukkariah Center, Dekwaneh, Lebanon.

**Armenia**  
+374 93 720991  
21, 1 Bagrevand St, Yerevan, Armenia.