

M350-080 Mars® M&M'S®



Issue Date:	2/10/2017	Revision:	A
-------------	-----------	-----------	---

PRODUCT DESCRIPTION	
Varying sized pieces of chopped M&M candy	

PHYSICAL ATTRIBUTES							
Appearance:	Irregular pieces varying in size and shape						
Color:	Various colors						
Flavor:	Typical M&M candy flavor						
Pack Size:	2x4lb zipper bags per corrugated case.						
Case Dimensions: L[depth]xWxH in.	7	14.9	5	Case Cube(ft ³):	0.3018	Pallet Conf. (TI / HI)	15 13

INGREDIENTS	
MILK CHOCOLATE (SUGAR, CHOCOLATE, SKIM MILK, COCOA BUTTER, LACTOSE, MILKFAT, SOY LECITHIN, SALT, ARTIFICIAL FLAVORS), SUGAR, CORNSTARCH, LESS THAN 1% - CORN SYRUP, DEXTRIN, COLORING (INCLUDES BLUE 1 LAKE, YELLOW 6, RED 40, YELLOW 5, BLUE 1, RED 40 LAKE, BLUE 2 LAKE, YELLOW 6 LAKE, YELLOW 5 LAKE, BLUE 2), GUM ACACIA.	
ALLERGENS:	CONTAINS: MILK AND SOY. MAY CONTAIN: PEANUTS.

NUTRITIONAL INFORMATION	
NUTRIENT	Per 100g
CALORIES	467.100679
CALORIES FROM FAT	165.698361
TOTAL FAT (g)	18.410929
SATURATED FAT (g)	11.327527
TRANSFAT (g)	0.087628
CHOLESTROL (mg)	7.980285
SODIUM (mg)	69.613000
TOTAL CARBOHYDRATE (g)	72.520244
DIETARY FIBER (g)	2.667352
SUGARS (g)	64.696227
PROTEIN (g)	4.882767
VITAMIN A (IU)	109.568504
VITAMIN C (mg)	0.565782
CALCIUM (mg)	119.120376
IRON (mg)	1.197418



Nutrition Facts	
Serving Size 2 Tbsp. (24.44g)	
Servings Per Container about 76	
Amount Per Serving	
Calories 120	Calories from Fat 40
% Daily Value*	
Total Fat 4.5g	7%
Saturated Fat 3g	15%
Trans Fat 0g	
Cholesterol 0mg	0%
Sodium 15mg	1%
Total Carbohydrate 17g	6%
Dietary Fiber <1g	4%
Sugars 16g	
Protein 1g	
Vitamin A 0%	Vitamin C 0%
Calcium 2%	Iron 0%
* Percent Daily Values are based on a 2,000 calorie diet. Your daily values may be higher or lower depending on your calorie needs:	
	Calories: 2,000 2,500
Total Fat	Less than 65g 80g
Saturated Fat	Less than 20g 25g
Cholesterol	Less than 300mg 300mg
Sodium	Less than 2,400mg 2,400mg
Total Carbohydrate	300g 375g
Dietary Fiber	25g 30g

Brand Name:	TR Toppers	Net Weight: (Lbs.)	8.00
Bag GTIN	0 06 51844 10167 7	Net Weight: (Kg.)	3.63
Case GTIN	0 06 51844 10167 4	Gross Weight: (Lbs.)	9.00
Kosher	Star-D	Gross Weight: (Kg.)	4.08
Metal Detection	1.5mm Ferrous	1.8mm Non-Ferrous	2.0mm SS316
Country of Origin	USA	Density (lb/gal)	6.81

MICROBIOLOGICAL ATTRIBUTES	
Attributes	Limits
Total Aerobic Plate Count (cfu/g)	<20,000
Yeast and Mold (cfu/g)	<50
E. coli (MPN/g)	<1
Salmonella (/375g)	Negative

GMO STATEMENT	
	Produced with Genetic Engineering.
X	Partially Produced with Genetic Engineering.
	May be produced with Genetic Engineering.
	NOT Produced with Genetic Engineering.

STORAGE CONDITIONS	
Recommended Condition:	Best kept refrigerated (≤40°F)
Alternate Condition:	May be frozen (≤10°F)
Alternate Condition:	May be kept at ambient temperature (≤75°F, <55%RH) Seal container after opening Refrigerate after opening

SHIPPING CONDITIONS	
Recommended Condition:	May be shipped refrigerated ($\leq 40^{\circ}\text{F}$)
Alternate Condition:	May be shipped frozen ($\leq 10^{\circ}\text{F}$)
Alternate Condition:	May be shipped at ambient temperature ($\leq 75^{\circ}\text{F}$, 45-55%RH).

SHELF LIFE	
Recommended Shelf Life:	12 months.
Alternate Shelf Life:	Calculate 1/2 of the remaining shelf life after opening (Seal container after opening. Refrigerate after opening)
Alternate Shelf Life:	N/A

ALLERGEN / SENSATIZER TABLE			
COMPONENT	PRESENT IN PRODUCT	PRESENT IN PRODUCTS MANUFACTURED ON THE SAME LINE	PRESENT IN THE SAME MANUFACTURING PLANT
PEANUTS AND DERIVATIVES	MAY CONTAIN	YES	YES
TREE NUTS AND DERIVATIVES	NO	YES	YES
EGG AND DERIVATIVES	NO	YES	YES
MILK AND DERIVATIVES	YES	YES	YES
SOY AND DERIVATIVES	YES	YES	YES
WHEAT	NO	YES	YES
FISH (SPECIFY SPECIES)	NO	NO	NO
CRUSTACEAN SHELLFISH (SPECIFY)	NO	NO	NO
SULFITES > 10 ppm	NO	NO	NO
MUSTARD	NO	NO	NO
SESAME	NO	YES	YES
GLUTEN	NO		
PARTIALLY HYDROGENATED OILS	NO		
ARTIFICIAL FLAVOR SOURCE	Vanillin		
FD&C ARTIFICIAL COLORS	Yellow 5 Lake, Red 40 Lake, Blue 1 Lake, Yellow 6 Lake, Blue 2 Lake, Yellow 5, Red 40, Blue 1, Yellow 6, Blue 2		

GRANULATION									
Sieve Size	1/4"	#8	#12	Pan					
%	44.5 - 70.7	21.6 - 47.4	1.0 - 3.5	2.5 - 8.8					

CODE FORMAT	
Case Code - Left Side: Julian Date, Time, M350-080, BB MM-YYYY	EXAMPLE: 25811 15:32 M350-080
Case Code - Right Side: Julian Date, Time, M350-080, BB MM-YYYY	JJJ = Production Julian Date 258 = September 15; Y = Last Digit of Year 1 = 2011; L = Line (Numeric) 1 = Line 1; Time: HH:MM 15:32 = 3:32 p.m.
Pallet Markings: Julian Date, Pallet #, M350-080, M&M's, M&M Food Service	Product Code = (e.g. M350-080)

LABEL / CASE GRAPHICS



DELINE BOX CO. PRINT SPECIFICATION

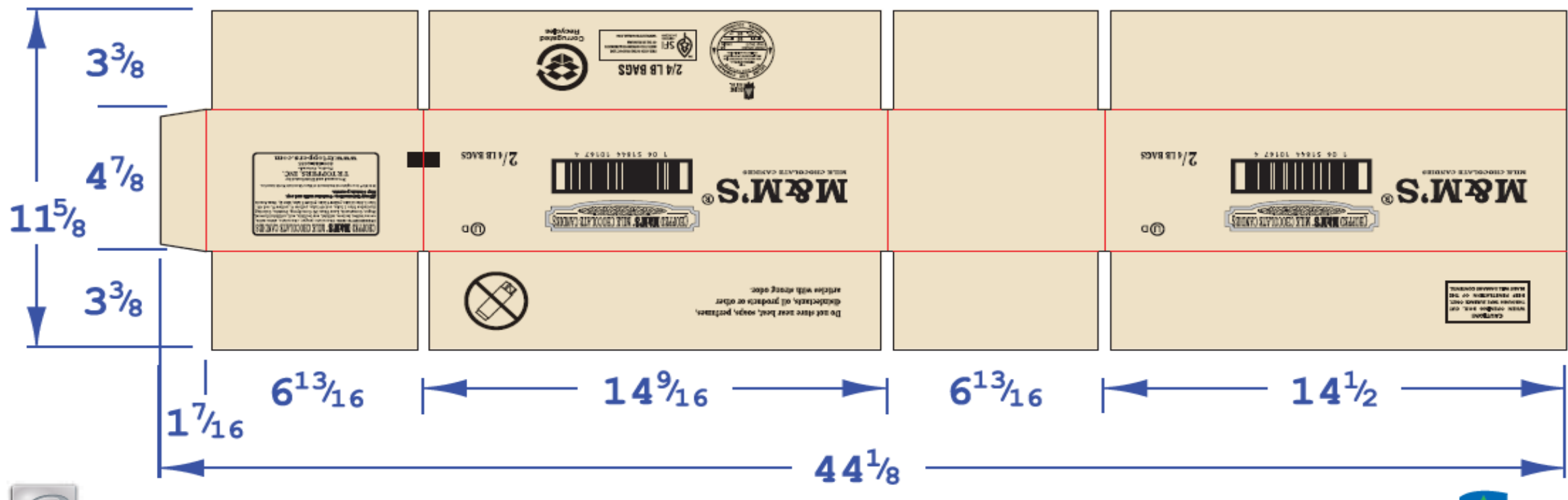
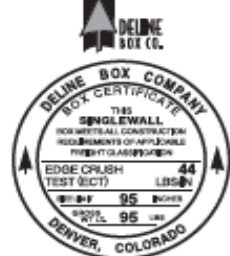
DATE: 02/24/2014 DOCKET #: 46182 FILE #: 83088 PRINT DIRECTION: \uparrow 96.25 (%) RSC (X) DIE CUT ()
 CUST. NAME: TR TOPPERS LPI: 40 PLATE TYPE: .250 IPlate
 JOB DESCRIPTION: ZM900-080 2/4 LB Bags NUMBER ON: 1 ACROSS: 1 AROUND: 1
 CAD #: TRTJ7825F CUSTOMER #: 4914 TEST: 200 36MESW (44 ECT Stamp) FLUTE: C
 BAR CODE #: 10651844101674 LWR: BOX SIZE: 14:06 X 6:10 X 4:08 SHEET SIZE: 11:10 X 44:08
 PRINT DIE #: T-184 STEEL RULE DIE #: CYL REPEAT: 41" PRESS: EMBA

COLOR ROTATION:					
	COLOR	NUMBER	FORMULA	DENSITY	ANILOX
5 4 3 2 1 (FIRST PASS)	BLACK	90			

CAUTION!
 WHEN OPENING BOX, CUT THROUGH TAPE SURFACE ONLY. DEEP PENETRATION OF THE BLADE WILL DAMAGE CONTENTS.



Do not store near heat, soaps, perfumes, disinfectants, oil products or other articles with strong odor.



Pepperdines
 790 Umatilla St. • Denver, CO 80204
 P: 303-595-3663 • F: 720-384-0633
 TF: 1-800-440-5188
 www.pepperdines.com

REORDER NUMBER: **PROOF REV O - 46182**
 THIS MASTER SHOULD NOT BE FOLLOWED FOR EXACT SIZE OR COLOR. DATE 10/06/14



M&M'S®
 MILK CHOCOLATE CANDIES



1 06 51844 10167 4

2/4 LB BAGS

CHOPPED M&M'S® MILK CHOCOLATE CANDIES
 INGREDIENTS: Milk Chocolate (sugar, chocolate, skim milk, cocoa butter, lactose, milkfat, soy lecithin, salt, artificial flavors), Sugar, Cornstarch, Less Than 1%-Corn Syrup, Dextrin, Coloring (includes blue 1 lake, red 40 lake, yellow 6, yellow 5, red 40, blue 1, blue 2 lake, yellow 6 lake, yellow 5 lake, blue 2), Gum Acacia
Allergy Information: Contains milk and soy. May contain peanuts.
 M & M's® is a registered trademark of Mars Chocolate North America.
 Processed and Distributed by
TR TOPPERS, INC.
 Pueblo, Colorado
 800-748-4635
 www.trtoppers.com