

Visitor moorings – Nc'nean Distillery 2023 (Operational April - October)

Please note there is NO overnight mooring on either of these bouys. From each mooring there is a 20 minute walk to the distillery and tenders will need to be brought up onto the beach.

1. St Columbus chapel.

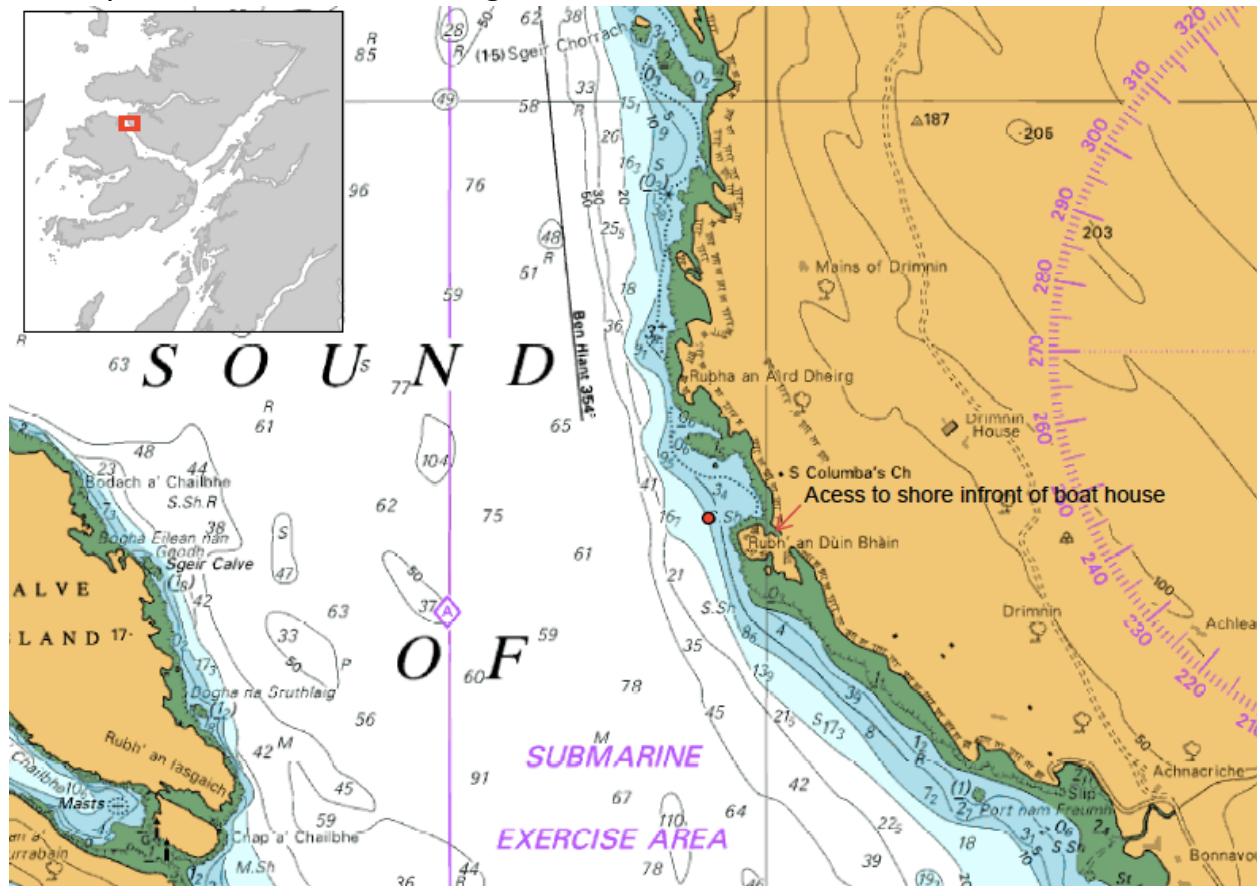
Tag number is 2776

co-ordinates 56° 37.256 -6 °0.190'

4 +-Ton Block [7-10mx36mm nominal Studlink Ground Chain 10m of 20mm Midlink Chain

Buoy and Rope Pickup] The mooring in the chapel bay will be safe for any vessel up the 40tons (45t) as long as its draft is 3m or less. Water is 4m at low water.

A map to view the location of the mooring can be seen below. Please note access to the shore is behind the headland, Infront of the boat house, which is not directly visible from the mooring.



2. Drimnin Bay

Tag number 2777,

co-ordinates 56 36.623 -5 59.056.

The mooring is suitable for up to 15tons. A map view of the mooring location can be seen below.

Please note that the stone pier is privately owned and not for public use. You will need to bring your tender onto the shore.

