

# INIKA

ORGANIC

## Loose Mineral Foundation Shades



**Grace (P1)**

*Very light with neutral undertones*



**Strength (N3)**

*Light with warm undertones*



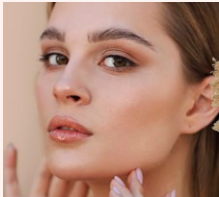
**Unity (N2)**

*Light with neutral undertones*



**Nurture (Y4)**

*Light to medium with warm undertones*



**Patience (Y5)**

*Medium with warm undertones*



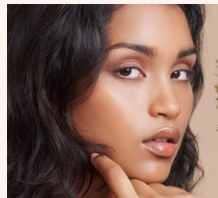
**Trust (Y6)**

*Medium with neutral undertones*



**Freedom (N7)**

*Medium to tan with warm undertones*



**Inspiration (Y8)**

*Tan with warm undertones*



### Loose Mineral Foundation

A buildable powder foundation with a silky texture that blends effortlessly for a natural-looking, airbrushed complexion that won't dry out the skin.