

SPECIFICATIONS

9600 SERIES NIGHT COVER

OEM/NON-CASSETTE WITH TOP RAIL TRAVERSE

ITEM #s:

96104-01 4ft Night Cover

96106-01 6ft Night Cover

96108-01 8ft Night Cover



SPECIFICATIONS

Model Type: OEM/Non-Cassette with Traverse Top Rail

Fabric Type: Woven Aluminum laminated to Polyethersulfone, Perforated; Sealed with Polyethylene; Laser Sealed Edges; Exceeds UL94HB Fire Retardant Standard

Anti-Bacterial: Engineered Solution

Fabric Length: 78"

Handle: Clip-on Slim-Line Handle

Secures with: 2 x clip-on magnets on the bottom rail profile

Sizes: 4ft, 6ft, 8ft (width)

Housing: N/A

Mounting System: Permanent Aluminum Top Rail with Spring Metal Clips

Braking System: Smooth, Controlled Retraction using Internal Speed Adjuster

Retention: Factory Preset Tension - Easy Adjustment -

Bottom Rail Profile: Recyclable Heavy Gauge Extruded Aluminum (30mm)

Optional: (1) Hook (for handle) in lieu of magnets

INCLUDED

OPTIONAL



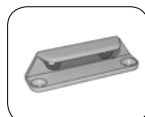
Handle



2 x Secure Snap Clip-On Magnets



Spring Mounting Clips



Hook for Handle