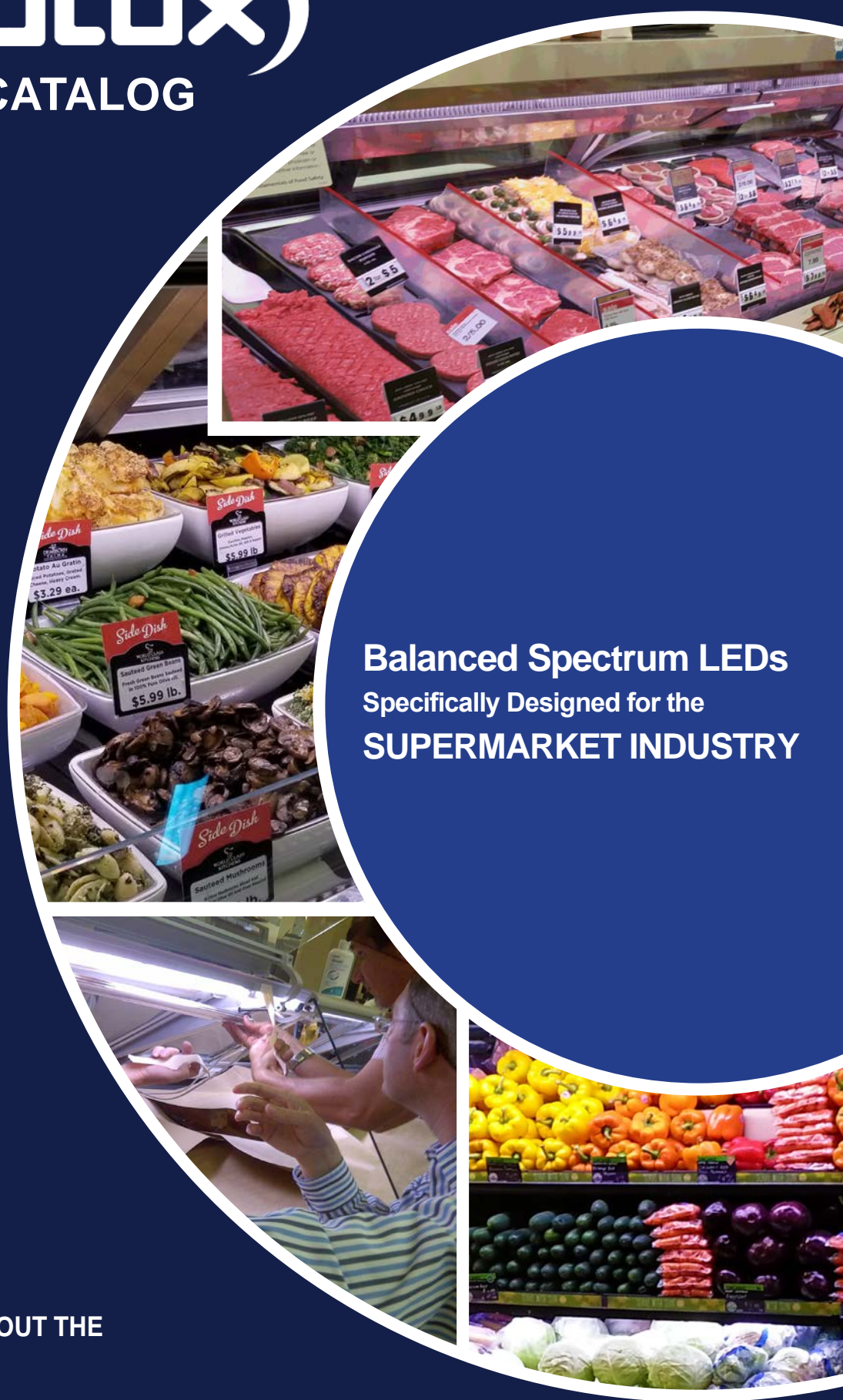


PROMOLUX

LED PRODUCT CATALOG



Balanced Spectrum LEDs
Specifically Designed for the
SUPERMARKET INDUSTRY

THE ONLY LED THAT BRINGS OUT THE
TRUE COLOR
OF YOUR FRESH FOOD DISPLAYS

2024

PROMOLUX

FOOD-SAFE LED LIGHTING SOLUTIONS

FOOD-SAFE SPECTRUM

Before: 4000K



- Will not turn meat brown as fast as other lighting
- Extends seafood's "Fresh from the Sea" aroma
- Reduces damage to perishables
- Prolongs the shelf-life of fresh food
- Increases overall food safety
- Food stays fresher longer



After:
PROMOLUX LEDs

Promolux LEDs eliminate the portions of visible spectrum that damage fresh food increasing shelf life by 1-3 days!

Savings in reduced shrink offset the cost of Promolux LEDs in as little as 90 days

Promolux LEDs are ideal for protecting and merchandising meat, seafood, produce, deli & prepared foods, bakery, ice cream & gelato and floral

FOOD-SPECIFIC DESIGN



- No shadows or dark spots
- High brightness at low power
- Superior thermal management
- Cooler physical temperature
- Perfect when close to food
- High IP - Safe for misting systems

LEDs Designed Specifically for Supermarkets & Grocery Stores

FOOD-SAFE MERCHANDISING

Before: 3500K

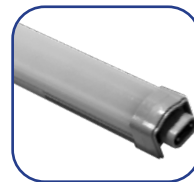


- Vibrant, natural displays
- Creates a visual “wow” in your case
- Generates impulse sales
- Shows food in the best possible light
- Differentiates you from other stores

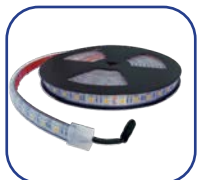
After:
PROMOLUX LEDs



PLUG-N-PLAY T8 LED



SLIMLINE BAR LED



FLEXIBLE TAPE LED



PAR30 LED

*These are just a few of our LEDs. Information about all sizes, types and custom options is available by calling us
Toll Free: 1-800-519-1222 or Emailing: info@promolux.com*

PLUG-N-PLAY T8LED hybrid

TYPE A&B
Single End



IDEAL FOR

Service & Multi-Deck: Meat, Seafood, Dairy, Deli & Prepared Foods, Floral, Produce, Bakery, Salad Bars & Ice Cream/ Gelato

SPECIFICATIONS

- G13 Bi-Pin Rotatable & Locking End-Caps
- Plug-n-Play (no wiring changes)
- Replaces T8 Fluorescent Tubes
- Works with **T8 Electronic Ballasts** (Type A LED)
- Single End Power Input** (Polar) when Direct Wired (Type B LED)
- 134° Beam Angle
- UL Conforming
- IP54
- High Brightness/ 80 CRI
- High R9/R12 Values
- Up to 60% Energy savings
- Average 50,000 Hours Life Span

Promolux Installed:



Size	Model Number	Watts	Type	Length (mm) (Nominal)	Length (in) (Nominal)	Replaces Fluorescent	Lumens	Lumens per Watt	Color
2ft	T8PNP-PL-24C+	8	Canopy	600	24	F17 T8	880	110	Platinum
3ft	T8PNP-PL-36C+	14	Canopy	900	36	F25 T8	1582	113	Platinum
4ft	T8PNP-PL-48C+	18	Canopy	1200	48	F32 T8	2070	115	Platinum
5ft	T8PNP-PL-60C+	22	Canopy	1500	60	F40 T8	2508	114	Platinum
3ft	T8PNP-PL-36S+	7	Shelf	900	36	F25 T8	791	113	Platinum
4ft	T8PNP-PL-48S+	9	Shelf	1200	48	F32 T8	1035	115	Platinum
5ft	T8PNP-PL-60S+	11	Shelf	1500	60	F40 T8	1243	113	Platinum



www.promolux.com • info@promolux.com • 1.250.743.1222 • 1.800.519.1222

Specifications subject to change without notice. Contact us for more information.



PLUG-N-PLAY T8LED TYPE A&B hybrid

Dual End



IDEAL FOR

Service & Multi-Deck: Meat, Seafood, Dairy, Deli & Prepared Foods, Floral, Produce, Bakery, Salad Bars & Ice Cream/Gelato

SPECIFICATIONS

G13 Bi-Pin Rotatable & Locking End-Caps
 Plug-n-Play (no wiring changes)
 Replaces T8 Fluorescent Tubes
 Works with **T8 Pre-Heat Ballasts** (Type A LED)
Dual End Power Input when Direct Wired (Type B LED)
 134° Beam Angle
 UL Conforming
 High Brightness/ 80 CRI
 High R9/R12 Values
 Up to 60% Energy savings
 Average 50,000 Hours Life Span

Size	Model Number	Watts	Type	Length (mm) (Nominal)	Length (in) (Nominal)	Replaces Fluorescent	Lumens	Lumens per Watt	Color
2ft	T8PNP-PL-0600C+	8	Canopy	600	24	L 18 T8	880	110	Platinum
3ft	T8PNP-PL-0900C+	14	Canopy	900	36	L30 T8	1582	113	Platinum
4ft	T8PNP-PL-1200C+	18	Canopy	1200	48	L36 T8	2070	115	Platinum
5ft	T8PNP-PL-1500C+	22	Canopy	1500	60	L58 T8	2508	114	Platinum
3ft	T8PNP-PL-0900S+	7	Shelf	900	36	L30 T8	791	113	Platinum
4ft	T8PNP-PL-1200S+	9	Shelf	1200	48	L36 T8	1035	115	Platinum
5ft	T8PNP-PL-1500S+	11	Shelf	1500	60	L58 T8	1243	113	Platinum

SLIMLINE 24V BARLED

Works with 24V Constant Voltage LED Driver (Sold Separately)



Promolux Installed:



IDEAL FOR

Service & Multi-Deck: Meat, Seafood, Dairy, Deli & Prepared Foods, Floral, Produce, Bakery, Salad Bars & Ice Cream/Gelato

SPECIFICATIONS

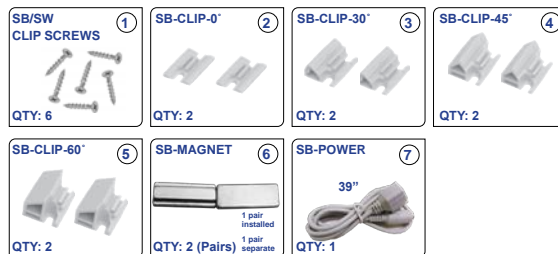
Connectable in a Series up to 150W
IP65
226° Beam Angle
CRI: > 80
High R9 & R12 Values
Power Factor: > 0.9
Rated Life: 50 000 hrs
Voltage Input: 24V
Chips: 2835
Color: Platinum

Size	Model Number	Watts	Type	Length (mm) (Nominal)	Length (in) (Nominal)	Lumens	Lumens per Watt
1ft	SB-PL-10C	4	Canopy	254	10	310	78
2ft	SB-PL-22C	10	Canopy	549	22	860	78
3ft	SB-PL-34C	14	Canopy	849	34	1300	81
4ft	SB-PL-46C	18	Canopy	1149	46	1800	82
5ft	SB-PL-58C	22	Canopy	1449	58	2200	80
3ft	SB-PL-34S	7	Shelf	849	34	1080	98
4ft	SB-PL-46S	9	Shelf	1149	46	1320	94
5ft	SB-PL-58S	11	Shelf	1449	58	990	90

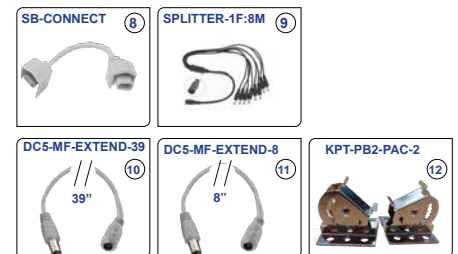
ACCESSORIES

1. Mounting Screws
2. 0° Mounting Clip
3. 30° Mounting Clip
4. 45° Mounting Clip
5. 60° Mounting Clip
6. Mounting Magnets
7. Power Cord
8. Connector Cord/Jumper
9. M to F DC 5mm Power Splitter
10. M to F 39" DC 5mm Extnsn Cord
11. M to F 8" DC 5mm Extnsn Cord
12. Rotatable Metal Clips (2-Pack)

Included



Optional Purchase



www.promolux.com • info@promolux.com • 1.250.743.1222 • 1.800.519.1222

Specifications subject to change without notice. Contact us for more information.



FLEXIBLE 24V TAPELED

Works with 24V Constant Voltage LED Driver (Sold Separately)



Promolux Installed:



IDEAL FOR

Curved glass display cases, freezer & cooler doors, display cases with tight space requirements, corners, shelves, cosmetic counters, makeup & jewelry displays

SPECIFICATIONS

Available in 16ft (5m) Rolls
 IP67
 SMD 2835 LED
 72W (16ft/5m Roll)
 14.4W/m
 463.5lm/f
 Cutable (Marked on LED Tape)
 Joinable (Using Connector)
 CRI: > 80
 High R9 & R12 Values
 120° Beam Angle
 Rated life: 50 000 hrs
 Voltage input: DC 24V

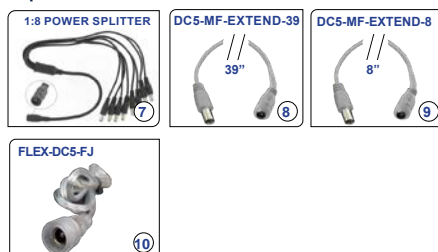
Model Number	Watts	Lumens (16ft Roll)	Lumens per Watt	Color
FLEX24-PL-72-16	72	7416	103	Platinum

ACCESSORIES

Included



Optional Purchase



1. Male DC 5mm Power Cord
2. Silicone End-Cap
3. Silicone Mounting Clip
4. Connector
5. Silicone
6. Corner Connector
7. M to F DC 5mm Power Splitter
8. M to F 39" DC 5mm Extnsn Cord
9. M to F 8" DC 5mm Extnsn Cord
10. Female DC 5mm Cord

OPERATING CONDITIONS

Secures With: 3M™ High-Strength Acrylic Adhesive 300LSE
 Storage temperature: -40°C to 80°C
 Operating Temperature: -25°C to 60°C
 Working Voltage: DC 24V
 Installation surface must be smooth, clean & dry
 Do not exceed 16ft length per DC 24V Driver

EXTERNAL DRIVER T8LED TYPE C

Works with 24V Constant Voltage LED Driver (Sold Separately)



IDEAL FOR

Service & Multi-Deck: Meat, Seafood, Dairy, Deli, Prepared & Frozen Foods, Floral, Produce, Bakery, Salad Bars & Ice Cream/Gelato

SPECIFICATIONS

G13 Bi-Pin Rotating & Locking End-Caps
External Power Supply (External Driver)
IP55
Replaces T8 Fluorescent Tubes
Double End Power Input (Polar)
185° Beam Angle
DC 24V
UL Conforming
High Brightness/ 80 CRI
High R9 & R12 Values
Up to 60% Energy savings
Average 50,000 Hours Life Span

Promolux Installed:

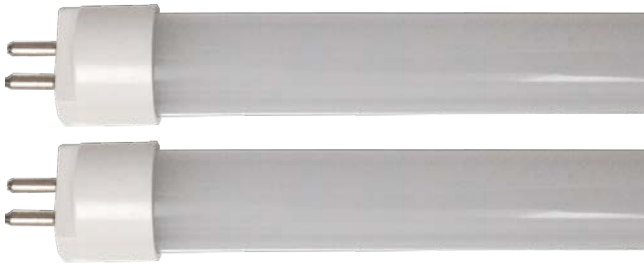


Size	Model Number	Watts	Type	Length (mm) (Nominal)	Length (in) (Nominal)	Replaces Fluorescent	Lumens	Lumens per Watt	Color
2ft	T8-PL-24C+	9	Canopy	600	24	F17 T8	880	110	Platinum
3ft	T8-PL-36C+	14	Canopy	900	36	F25 T8	1582	113	Platinum
4ft	T8-PL-48C+	18	Canopy	1200	48	F32 T8	2070	115	Platinum
5ft	T8-PL-60C+	22	Canopy	1500	60	F40 T8	2508	114	Platinum
3ft	T8-PL-36S+	7	Shelf	900	36	F25 T8	791	113	Platinum
4ft	T8-PL-48S+	9	Shelf	1200	48	F32 T8	1035	115	Platinum



www.promolux.com • info@promolux.com • 1.250.743.1222 • 1.800.519.1222

Specifications subject to change without notice. Contact us for more information.



EXTERNAL DRIVER T5LED TYPE C

Works with 24V Constant Voltage LED Driver (Sold Separately)



Promolux Installed:



IDEAL FOR

Service & Multi-Deck: Meat, Seafood, Dairy, Deli, Prepared & Frozen Foods, Floral, Produce, Bakery, Salad Bars & Ice Cream/Gelato

SPECIFICATIONS

- G5 Bi-Pin End-Caps
- External Power Supply (External Driver)
- IP55
- Replaces T5 Fluorescent Tubes
- Double End Power Input (Polar)
- 180° Beam Angle
- DC 24V
- UL Conforming
- High Brightness/ 80 CRI
- High R9 & R12 Values
- Up to 60% Energy savings
- Average 50,000 Hours Life Span

Size	Model Number	Watts	Type	Length (mm) (Nominal)	Length (in) (Nominal)	Replaces Fluorescent	Lumens	Lumens per Watt	Color
2ft	T5-PL-22C+	8	Canopy	549	22	F14 T5	880	110	Platinum
3ft	T5-PL-34C+	10	Canopy	849	34	F21 T5	1582	113	Platinum
4ft	T5-PL-46C+	15	Canopy	1149	46	F28 T5	2070	115	Platinum
5ft	T5-PL-58C+	20	Canopy	1449	58	F35 T5	2508	114	Platinum
3ft	T5-PL-34S+	5	Shelf	849	34	F21 T5	791	113	Platinum
4ft	T5-PL-46S+	7	Shelf	1149	46	F28 T5	1035	115	Platinum

LOW PROFILE ^{24V} STICKLED

Works with 24V Constant Voltage LED Driver (Sold Separately)



Promolux Installed:



IDEAL FOR

Olive Bars, Service & Multi-Deck:
Meat, Seafood, Dairy, Deli, Prepared &
Frozen Foods, Floral, Produce, Bakery,
Salad Bars & Ice Cream, Tight Space
Requirements

SPECIFICATIONS

For New Equipment or Retrofit
IP65
Single End Power Input with Female DC
5mm Plug Lead
180° Beam Angle - Rotatable 360°
DC 24V
UL Conforming
High Brightness/ >80 CRI
High R9 & R12 Values
Up to 60% Energy savings
Average 50,000 Hours Life Span

Size	Model Number	Watts	Type	Length (mm) (Nominal)	Length (in) (Nominal)	Lumens	Lumens per Watt	Color
1ft	LS-PL-10C+	7	Canopy	249	10	785	115	Platinum
2ft	LS-PL-22C+	8	Canopy	549	22	880	110	Platinum
3ft	LS-PL-34C+	10	Canopy	849	34	1582	113	Platinum
4ft	LS-PL-46C+	15	Canopy	1149	46	2070	115	Platinum
5ft	LS-PL-58C+	20	Canopy	1449	58	2508	114	Platinum
3ft	LS-PL-34S+	5	Shelf	849	34	791	113	Platinum
4ft	LS-PL-46S+	8	Shelf	1149	46	1035	115	Platinum



www.promolux.com • info@promolux.com • 1.250.743.1222 • 1.800.519.1222

Specifications subject to change without notice. Contact us for more information.



DOOR 24V TUBELED

Works with 24V Constant Voltage LED Driver (Sold Separately)



Promolux Installed



**INSTALLED
Promolux DOOR
TUBE LED**

IDEAL FOR

Cooler Doors
Freezer Doors

SPECIFICATIONS

IP65
CRI: > 80
High R9 & R12 Values
Power Factor: > 0.9
Rated Life: 50 000 hrs
Voltage Input: 24V
Chips: 2835

Size	Model Number	Watts	Type	Length (mm) (Nominal)	Length (in) (Nominal)	Lumens	Lumens per Watt	Color
5ft	DTUBE-PL-60C	22	Door	1500	60	2200	100	Platinum
6ft	DTUBE-PL-72C	28	Door	1800	72	2800	100	Platinum

HIGH POWER 35W PAR30LED



IDEAL FOR

Supermarkets, Grocery Stores,
Convenience Stores, Delicatessens, &
Restaurants as Accent, Spot, Task, Track &
Recessed Lighting

SPECIFICATIONS

Superior Thermal Management
Beam Angle: 25°
E27 Base
LED Source: SMD3030
Power Factor: >0.95
Long life: 2 Year Warranty
Reduces Energy Consumption up to 76%
Lasts up to 20 times longer than halogen
Instant full light output & stable color
High Brightness/ >82 CRI
High R9 & R12 Values
Material: Die Cast Aluminum Heat Sink
IP44
Life Span 50,000 hrs

Promolux Installed:



Model Number	Watts	Lumens	Lumens per Watt	Color
PAR30-PL-35W	35	3850	110	Platinum

OPERATING CONDITIONS

Operating Temperature: -20°C to 45°C
Working Voltage: AC 85-265V
50-60Hz



www.promolux.com • info@promolux.com • 1.250.743.1222 • 1.800.519.1222

Specifications subject to change without notice. Contact us for more information.

CONSTANT VOLTAGE 24V LEDDRIVER

ITEM: 6124080

ITEM: 6124120



ELECTRICAL SPECIFICATIONS

	80W	120W
Input Rated Voltage:	100~240Vac	100~240Vac
Input Frequency:	50/60 Hz	50/60 Hz
Input Power:	100W	100W
Power Factor:	>95%	>95%
Efficiency:	>85%	>85%
Total Harmonic Distortion:	<20%	<20%
Output Power:	80W	120W
Output Voltage:	24V dc	24V dc
Output Current:	3.3A dc	3.3A dc

NOTATIONS



These drivers comply with standard UL1310, meaning output is considered safe to contact and no major safety protection is required at the LED / luminaire level. There is no risk of fire or electric shock. These drivers operate using less than 60 volts in dry applications, 30 volts in wet applications, less than 5 amps, and less than 100 watts.

PHYSICAL SPECIFICATIONS

	80W	120W
Low Profile Design:	6 1/2" L x 2 5/8" W x 1 1/2" H 172mm L x 66mm W x 38.5 mm H	8 1/2" L x 2 5/8" W x 1 1/2" H 217mm L x 66mm W x 38.5 mm H
Weight:	1.65 LBs / 750g	2 LBs / 950g
Input Wires:	L (Black), N (White)	L (Black), N (White)
Output Wires:	Positive (Red), Negative (Black)	Positive (Red), Negative (Black)
Enclosure:	200 mm/7.87" Conforming to SELV	200 mm/7.87" Conforming to SELV

SAFETY

Class 2 Power Supply
SELV Output
Over Current Protection, Short Circuit Protection, Over Voltage Protection, Over Temperature Protection
UL Recognized Component
Intertek ETL Certified

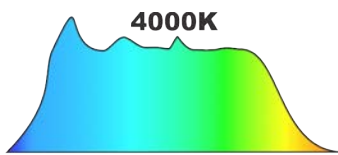
ENVIRONMENTAL SPECIFICATIONS

Working Temperature (ta):	-30°C to 60°C / -22°F to 140°F
Case Temperature (tc):	-40°C to 85°C / -40°F to 185°F
Operating Humidity:	Dry or Damp Locations 10% - 90%
Storage Humidity:	Dry or Damp Locations 5% - 95%

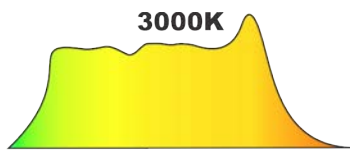
EMC

Emission:	Complies with EN 55015 Class B, EN61000-3-2 Class C, EN 61000-3-3, FCC Part 15 Class B
Immunity:	Complies with EN61547, FCC 47 CFR Part 15, CISPR 22

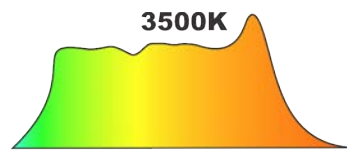
The example diagrams below help give a visual of the Promolux Platinum color spectrum in comparison with 4000K, 3000K, 3500K spectrums



4000K Spectrum
"Cool White"
 Emphasis on Light Blue & Light Green



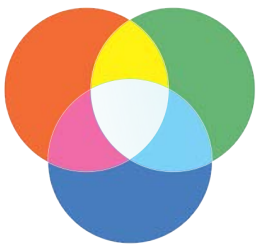
3000K Spectrum
"Warm White"
 Emphasis on Yellow



3500K Spectrum
Yellowish Orange

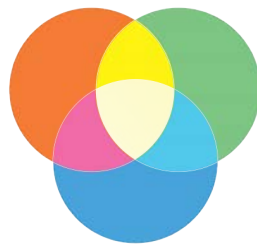


Promolux PLATINUM
Balanced Spectrum
 Small Spikes in Deep Red & Deep Blue
 Filtered Out Some Small Portions of Visible Spectrum (Yellow)
 Because they are known to damage fresh food



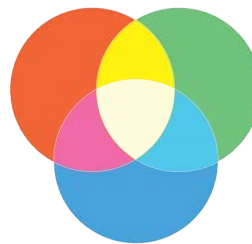
4000K

Colors have no "pop" / dull
 This light sucks color from everything
 Whites have slight blue overwash



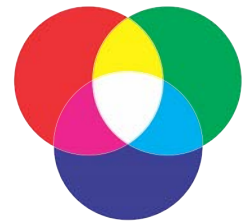
3000K

Colors have yellow overwash, dulling them
 Makes red meat look very orangey brown
 Whites have full yellow overwash



3500K

Colors have yellow overwash
 Makes red meat look orangey brown
 Whites have full yellow tinge



Promolux PLATINUM

All colors are deep, saturated & vibrant
 Ideal for meat, seafood, produce, deli & floral merchandising
 Whites are clean, crisp & vivid
 This is not a 'white' light LED. It's a Balanced Spectrum LED where all colors 'pop' AND whites are crisp & vivid

See examples of how fresh food looks under these lights...



Color Spectrum Comparisons

Promolux LEDs are the only LEDs on the market that are designed specifically for fresh food merchandising in supermarkets

Before: 3500K



After: PROMOLUX LEDs



Before: 4000K



After: PROMOLUX LEDs



Promolux LEDs have a true balanced-color spectrum, so every color is shown equally under Promolux. This means that the same Promolux LED can be used to showcase fresh meat, seafood, deli & prepared foods, produce, sushi, salad bars, olive bars, bakery & floral!

Each picture above shows Promolux installed in different fresh food cases - creating vibrant displays in every case!

MGV INC. MARKET GROUP VENTURES

For over 30 years Market Group Ventures has produced innovative retail solutions that save energy as well as protect and prolong the shelf life of perishable foods. Market Group Ventures is a global company with facilities, distribution centers and offices in North America and Europe, and services more than 30 countries worldwide.

Some of our customers include:



PROMOLUX

www.promolux.com • info@promolux.com • 1.250.743.1222 • 1.800.519.1222

Distributed by:

