



SpecSeal® Intumescent Sleeve

The SpecSeal® Intumescent Sleeve is a factory manufactured device designed to protect metallic and plastic pipes penetrating through fire rated floors. Utilizing a flexible steel sleeve body and molded intumescent lining, the SpecSeal® Intumescent Sleeve wraps around pipes ranging from 2 in. to 4 in. Trade size. Once installed around the penetrating pipe, the SpecSeal® Intumescent sleeve slides along the pipe into the floor opening allowing for single side installation without the use of steel screws or hose clamps.

Applications

SpecSeal® Intumescent Sleeves are used to protect a variety of pipe types including Steel, Iron, Copper, RMC, EMT, PVC, PVC Foam Core (ccPVC), CPVC, RNC, ABS, and ABS Foam Core (ccABS) in both vented (DWV) and closed (electrical conduit and water supply) installations.

SpecSeal® Intumescent Sleeves are suitable for use in common constructions including concrete floors, and concrete over steel deck floor assemblies.

Specifications

The firestop system shall be a factory assembled intumescent sleeve utilizing a molded, flexible intumescent lining. The intumescent sleeve shall provide a minimum of 30x free expansion and shall contain no water soluble expansion ingredients. The specified material shall be approved for a wide range of applications including Steel, Iron, Copper, RMC, EMT, PVC, PVC Foam Core (ccPVC), CPVC, RNC, ABS, and ABS Foam Core (ccABS) when used by itself or in combination with other products from the same manufacturer. The sleeve shall be UL Certified and tested to the requirements of ASTM E814 (UL1479) and CAN/ULC-S115.

Specified Divisions

| | | |
|-------------|----------|--------------------------|
| Division 7 | 07 84 13 | Penetration Firestopping |
| Division 22 | 22 00 00 | Plumbing |

Performance

SpecSeal® LCC Collars are the basis for systems that meet the exacting criteria of ASTM E814 (UL1479) and CAN/ULC-S115. Systems have been tested for all common forms of masonry construction and the most common plastic pipes with ratings up to two hours. Consult factory for information not available in the UL Online Certifications Directory/UL Product IQ™ as of this printing.

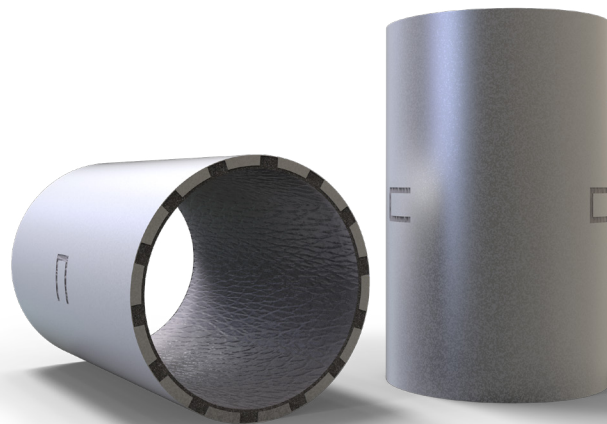


Limitations

This product has been designed to be safe with plastics. It has been used extensively and successfully with various types of plastic pipes, tubes, and plastic cable insulations. Variations in these materials, however, make it impossible to guarantee compatibility. STI strongly recommends that the user consults with the pipe, tubing, or cable manufacturer in question regarding any known sensitivities or potential restrictions before applying this product.

Maintenance

INSPECTION: Installations should be inspected periodically for subsequent damage. Any damage should be repaired using SpecSeal® products per the original approved design.



PHYSICAL PROPERTIES

| | |
|------------------------|------------------------|
| Shell Construction | Galvanized Steel |
| Expansion Begins | 320°F (160°C) |
| Volume Expansion | 30x to 60x |
| In Service Temperature | Less Than 120°F (49°C) |
| Shelf Life | No Limit |

Features & Benefits

- Rapid expansion - closes off burning pipes quickly
- Thin profile - use it in all the tight spots
- Flexible & durable - no loose flakes (eye hazards)
- Water resistant - no water soluble or hygroscopic ingredients
- High volume char - expands up to 60 times

SpecSeal® Intumescent Sleeve

System Selection

To find your firestop system or create a submittal, visit <https://systems.stifirestop.com/> to use System Search & Submittal Builder. You may also visit the [UL Online Certifications Directory/UL Product iQ™](#) for complete listings. (Firestop Systems).

Technical Service

Specified Technologies Inc. provides toll free technical support to assist in product selection and appropriate installation design. UL System designs suitable for submittal or specification purposes are available on request. A complete library of technical information is provided at the company's website www.stifirestop.com including Safety Data Sheets (SDS's).

Precautionary Information

No unusual hazards are known or expected. Observe normal safety procedures during installation.

Availability

SpecSeal® Intumescent Sleeves are available from Specified Technologies Inc. (STI) authorized distributors. For additional purchasing and technical information or for the names and locations of the nearest representative and/or distributor, regarding this and other Specified Technology products, please call 1-800-992-1180 or visit www.stifirestop.com.

ORDERING INFORMATION

| Catalog Number | UPC Number | Description | (UOM) Qty. | Case Qty. | Weight (Each) |
|----------------|--------------|--|------------|-----------|--------------------|
| SIS240 | 730573039526 | Intumescent Sleeve for 2" - 4" (51 mm - 102 mm) Trade Size pipe | 1 | 6 | 1.87 lbs (0.85 kg) |

IMPORTANT NOTICE: ALL STATEMENTS, TECHNICAL INFORMATION, AND RECOMMENDATIONS CONTAINED HEREIN ARE BASED UPON TESTING BELIEVED TO BE RELIABLE, BUT THE ACCURACY AND COMPLETENESS THEREOF IS NOT GUARANTEED.

STI TYPICALLY WARRANTIES ITS PRODUCTS FOR ONE FULL YEAR. FOR COMPLETE DETAILS OF OUR STANDARD WARRANTY, PLEASE VISIT WWW.STIFIRESTOP.COM/LEGAL/WARRANTY

MADE IN THE USA - © 2021 SPECIFIED TECHNOLOGIES INC.