

EZ Path® Cable Tray Retrofit Device



The EZ Path® Cable Tray Retrofit Device is designed to restore the ratings for overfilled cable tray penetrations. The device features a built-in fire and smoke sealing system that installs around existing cable trays and fastens to the barrier surface.

The EZ Path® Cable Tray Retrofit Device consists of a heavy gauge galvanized steel housing containing intumescent materials that expand rapidly when exposed to fire or high temperatures to close off the void area. Its unique two-piece design installs around existing cable tray penetrations in fire-rated walls restoring the fire-rating of penetrations even when loaded to 100% cable fill.

Applications

EZ Path® Cable Tray Retrofit Device restores non-compliant overfilled cable tray conditions in fire-rated walls. Cable capacity ranges from 25 to 100% visual fill. The two-piece split device facilitates installation around existing cable trays. The steel housing fastens directly to the wall surface or combines with steel adapter plates or SpecSeal Composite Sheet when addressing oversized openings.

EZ Path® Cable Tray Retrofit Device is available in a range of widths to accommodate for cable trays as narrow as 12 in. to as wide as 18 in. No additional putty or sealant is required for installation.

Specifications

All new data comm cable penetrations shall be routed through factory-supplied, maintenance-free, fire-rated pathway devices (Ex. EZ Path® Fire Rated Pathways). For existing cable trays where cable fill percentage exceeds listed system specifications, a factory-supplied, fire-rated retrofit device shall be installed. The device shall be a two-piece split design with intumescent materials and allow 25 to 100% visual fill. The device shall be UL Certified and tested to ASTM E814 (UL1479) and CAN/ULC-S115.

Specified Divisions

Division 7	07 84 13	Penetration Firestopping
Division 26	26 00 00	Electrical
Division 27	27 00 00	Communications

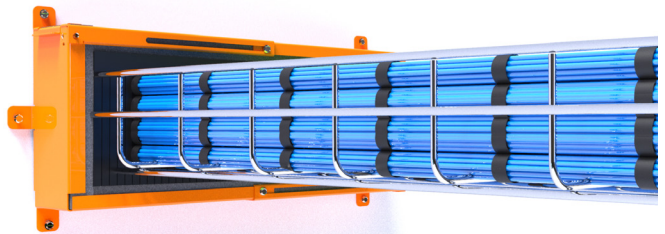
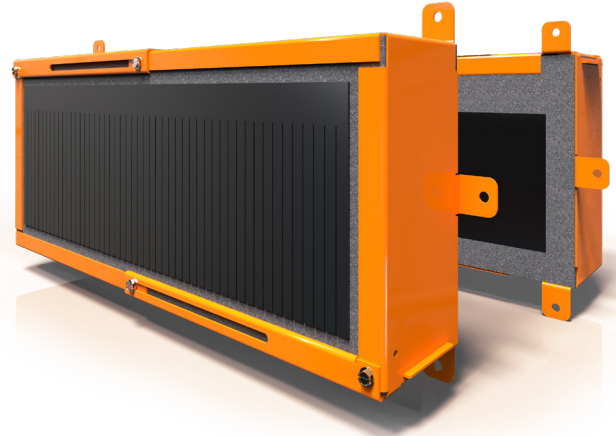
Performance

EZ Path® Cable Tray Retrofit Device is UL Certified in accordance with ASTM E814 (UL1479) and CAN/ULC-S115. Systems are available for wall construction with ratings up to and including 2 Hr. Refer to UL System for more details.



Maintenance

No maintenance of the pathway is normally required.



Features & Benefits

- Easy to install
- No additional firestopping required
- Sizes available for Trays from 12 in. wide to 18 in.
- 25% to 100% cable fill
- Tested with a variety of tray types
- Bring overfilled cable trays back into code compliance

PHYSICAL PROPERTIES

Shell Composition	0.059" (1.5 mm) Thick Galvannealed Steel
Fire Ratings	1 or 2 Hours
Expansion Begins	250°F (121°C)
Allowable Cable Fill	25 to 100%
In Service Temperature	Less than 130°F (54°C)
Shelf Life	No Limit

EZ Path® Cable Tray Retrofit Device



Limitations

This product has been designed to be safe with plastics. It has been used extensively and successfully with various types of plastic pipes, tubes, and plastic cable insulations. Variations in these materials, however, make it impossible to guarantee compatibility. STI strongly recommends that the user consults with the pipe, tubing, or cable manufacturer in question regarding any known sensitivities or potential restrictions before applying this product.

System Selection

To find your firestop system or create a submittal, visit <https://systems.stifirestop.com/> to use System Search & Submittal Builder. You may also visit the [UL Online Certifications Directory/UL Product iQ™](#) for complete listings. (Firestop Systems).

Technical Service

Specified Technologies Inc. provides toll free technical support to assist in product selection and appropriate installation design. UL System designs suitable for submittal or specification purposes are available on request. A complete library of technical information is provided at the company's website www.stifirestop.com including Safety Data Sheets (SDS's).

Precautionary Information

The use of this device is subject to local, regional and national codes. Consult the local Building Code Official or Authority Having Jurisdiction regarding any regional or local requirements that might influence the selection or use of the product.

Availability

EZ Path® Products are available from Specified Technologies Inc. (STI) authorized distributors. For additional purchasing and technical information or for the names and locations of the nearest representative and/or distributor, regarding this and other Specified Technology products, please call 1-800-992-1180 or visit www.stifirestop.com.

ORDERING INFORMATION

Catalog Number	UPC Number	Description	(UOM) Qty.	Case Qty.	Weight (Each)
EZCTR612	730573007396	Cable Tray Retrofit Device for max 6" by 12" cable trays, One Pair (2)	1	1	7.20 lbs (3.27 kg)
EZCTR614	730573007389	Cable Tray Retrofit Device for max 6" by 14" cable trays, One Pair (2)	1	1	7.60 lbs (3.45 kg)
EZCTR616	730573007372	Cable Tray Retrofit Device for max 6" by 16" cable trays, One Pair (2)	1	1	8.00 lbs (3.63 kg)
EZCTR618	730573007365	Cable Tray Retrofit Device for max 6" by 18" cable trays, One Pair (2)	1	1	8.40 lbs (3.81 kg)
EZCTR600P	730573007402	Oversized opening plates for Cable Tray Retrofit Device, One Pair (2)	1	1	10.1 lbs (4.58 kg)

IMPORTANT NOTICE: ALL STATEMENTS, TECHNICAL INFORMATION, AND RECOMMENDATIONS CONTAINED HEREIN ARE BASED UPON TESTING BELIEVED TO BE RELIABLE, BUT THE ACCURACY AND COMPLETENESS THEREOF IS NOT GUARANTEED.

STI TYPICALLY WARRANTIES ITS PRODUCTS FOR ONE FULL YEAR. FOR COMPLETE DETAILS OF OUR STANDARD WARRANTY, PLEASE VISIT WWW.STIFIRESTOP.COM/LEGAL/WARRANTY

MADE IN THE USA - © 2021 SPECIFIED TECHNOLOGIES INC.

