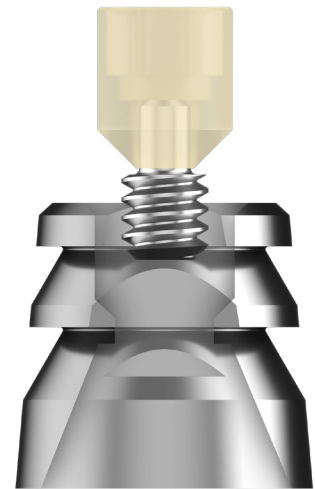


# SMART DENTURE CONVERSIONS

Keystone Dental Group is proud to partner with Smart Denture Conversions to bring clinicians an improved and simplified workflow when providing same-day immediate load prosthetics.

## BETTER. FASTER. STRONGER.

The 'magic' of the SDC System is the separable fastener. This patent-pending technology significantly simplifies the procedure and improves the outcome of full-arch temporary prosthesis restorations.



## Smart Denture Conversion



### The Benefits of Smart Denture Conversions:

- Decreased chair time – SDC allows clinicians to complete temporary full-arch conversion restorations in 40 minutes or less.
- Improves productivity and profitability to full-arch treatment concepts.
- Stronger temporary acrylic bridge with decreased fracture rate by retaining the structural integrity of the prosthesis.

## Coventional Conversion



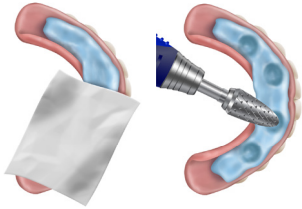
### The Challenges of Conventional Conversions:

- 2+ hours
- Significant fracture rate
- Damages occlusal surfaces
- Less flexibility for surgical & restorative team
- Poor aesthetics

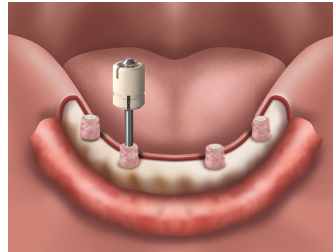
Compatible with other major implant systems.

# CLINICAL WORKFLOW

Visit [KeystoneDental.com](http://KeystoneDental.com)  
for more information.



Place bite registration material in the intaglio of the denture. Create wells in the denture to accommodate the Ti Bases.



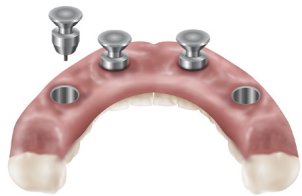
Secure Ti Bases on the multi-unit abutments using the separable fastener.



Place pick-up material in the intaglio of the denture and around the Ti Bases. Seat the denture and manipulate patient into ideal occlusion.



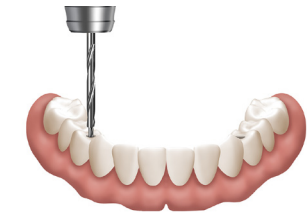
Once pick up material has set, gently remove the denture off the multi-unit abutments using the back end of a cotton forceps.



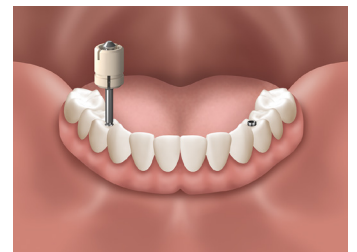
Press protective plugs into Ti bases, (engaging the separable fastener head still embedded in the Ti base).



Use an acrylic polisher to finish shaping and polishing the intaglio & cameo of the denture surface.



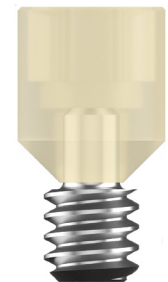
Create pilot hole for screw access and use guided drill to follow pilot hole down to the Ti Base.



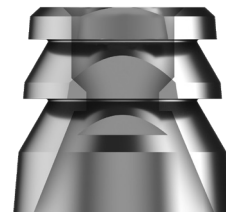
Use prosthetic screws to deliver the completed prosthesis.

## Components & Kits

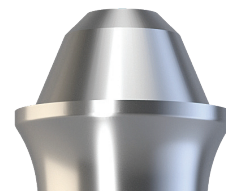
| DESCRIPTION                      | REF #       |
|----------------------------------|-------------|
| 10 pack of Separable Fasteners   | SDC-SF10PK  |
| 10 pack of Standard Ti bases     | SDC-STB10PK |
| 10 pack of Tall Ti bases         | SDC-TTB10PK |
| 10 pack of Laboratory Analogs    | SDC-LA10PK  |
| 10 pack of Prosthetic Screws     | SDC-PS10PK  |
| 6 pack of Press-On caps          | SDC-POC6PK  |
| 6 pack of Protective plugs       | SDC-PP6PK   |
| 6 pack of Coating Mandrels       | SDC-CM6PK   |
| Low Torque Driver                | SDC-TD      |
| Threaded Fragment Retrieval Tool | SDC-RT      |
| Pin Vise                         | SDC-PV      |
| Drill Kit                        | SDC-DK      |
| Starter Kit                      | SDC-SK      |
| Recharge Kit                     | SDC-RK      |
| Premium Starter Kit              | SDC-PSK     |
| 10 pack of Press-On Caps         | SDC-POC10PK |
| Pilot Drill Adapter              | SDC-PDA     |
| Pilot Drill                      | SDC-PD      |
| Clean Out Drill                  | SDC-COD     |
| Access Drill                     | SDC-AD      |



SEPERABLE FASTNER



TI BASE



MULTI-UNIT ABUTMENT