

DYNA OCS-B® COLLAGEN

Spongy bone substitute with collagen

OCS-B® Collagen consists of OCS-B® cancellous bovine bone granules with the addition of 10% highly purified Type I collagen derived from porcine.

Indications for Use

- Bone grafting in extraction socket
- Guided tissue regeneration
- Guided bone regeneration
- Lateral window sinus augmentation

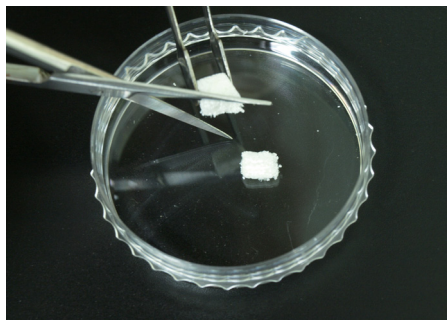


Characteristics

- Collagen coating enables easy handling and shortens surgical time
- The mixture of hydroxyapatite and purified collagen mimics the natural bone matrix, thus helping to shorten the healing period
- Moldable to various defect shapes
- Excellent new bone formation and space maintenance
- Hemostatic function
- Fulfills the functional and esthetic demands by promoting regeneration of bone and periodontal tissues
- Supplied in block shapes and cylindrical shape (in a syringe) for convenient and precise application

Handling

How OCS-B® Collagen is prepared.



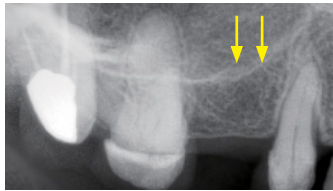
OCS-B® Collagen can be manipulated into the desired size with forceps or scissors in dry state.



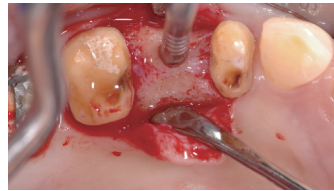
OCS-B® Collagen can be applied easily with forceps and doesn't have to be moistened. It is easily molded to desired shapes. Excessive packing should be avoided.

CLINICAL INSIGHTS

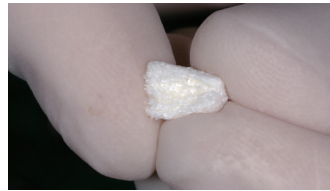
Case 1: Vertical Sinus Lift Procedure With Block



Pre-op view (→)



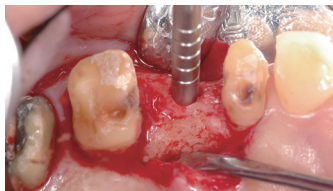
Sinus lift with osteotome technique



Molding of OCS-B® Collagen



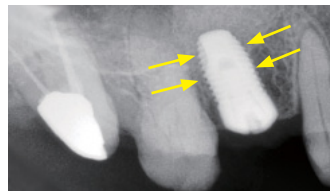
Grafting the lift area



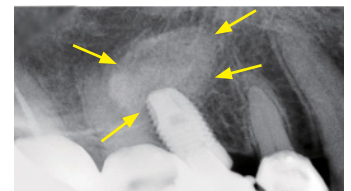
Packing with osteotome



Immediate implant placement

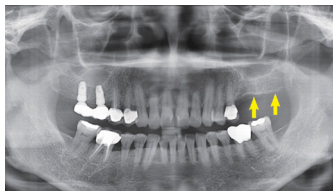


Implant and grafted bone (→)

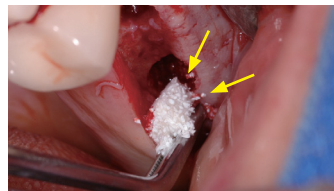


6 months after sinus lift implant placement (→)

Case 2: Lateral GBR Procedure With Block



Panorama view before surgery



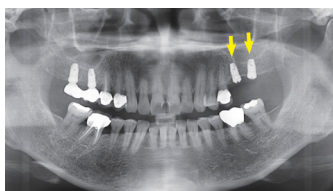
Grafting of OCS-B® Collagen



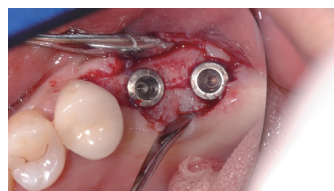
After implant placement



Wound closure



Panorama view after bone grafting



Four months after implant placement



After healing abutment placement



Panorama view after implant and healing abutment placement

Ordering Information

Catalog Number	Description	Dimensions (mm)	Weight (mg)
NB-CB-0110-010	Block	6 × 6 × 6	100
NB-CB-0110-025		7 × 8 × 9	250
NB-CB-0110-050		9 × 10 × 11	500
NB-CB-0110-025S	Cylinder in Syringe	4.6(D) × 40(W)	250
NB-CB-0110-050S		5.6(D) × 45(W)	500

GLOBAL HEADQUARTERS KEYSTONE DENTAL GROUP

154 Middlesex Turnpike
Burlington, MA 01803 USA
Tel: +1 781-328-3490
Toll-free: 866-902-9272
www.KeystoneDental.com

GLOBAL KDG OFFICES:

USA

KDG Irvine
13645 Alton Pkwy
Irvine, CA 92618, USA

ISRAEL

KDG Israel
Hashita 5, Industrial Park P.O. Box 3568
Caesarea 3088900, Israel

AUSTRALIA

Osteon Headquarters
767 Springvale Rd
Mulgrave VIC 3170, Australia

JAPAN

Osteon
3-chōme-5-4 Nagayoshi Kawanabe
Hirano Ward, Osaka, 547-0014, Japan