

PRODUCT CATALOG

YEAR 2023



SGL

THE SUNITA GROUP LIMITED

ABOUT US

Established in 2005 as SG Lighting, We Began with Incandescent Lamp Production and later expanded into Electrical Products, Fluorescent Tubes, and Energy Saving Lamps. We have always strived to continuously reinvent our people and organization and were the FIRST in EGYPT to set up fully automated production lines for energy-saving Lamps.

In 2013, renamed as THE SUNITA GROUP LTD, we set up the 1st fully automated LED production line in EGYPT to help achieve the national plan for energy conservation.

Over the years our group has successfully penetrated the lighting and electrical industries in the MENA region by offering a range of products, grades, and qualities.

THE SUNITA GROUP has established itself as the market leader by focusing on exceeding customer's needs and expectations We are committed to expanding our presence in the MENA region by continuously reinvesting to upgrade and enhance our operations with the support of our qualified management team to help provide a better quality of life and future for all stakeholders.

LEARN MORE

www.sglegypt.com

SGL

THE SUNITA GROUP LIMITED

OUR VISION

To enrich and delight customers with goods and services that matter.

OUR MISSION

Create value, and quality and provide real savings for families. We are a company without boundaries because that's how we see the world and our team's potential. Each day represents a fresh opportunity to share our vision and live our purpose.

By being committed and mindful to these ideals we uphold our founder's dedication to people and their well-being whilst promoting an environment that encourages creativity and continuous development of our teams and our products for the benefit of the environment and all stakeholders.



SGL

Contents

Lighting Sources	04
• Compact Fluorescent	06
• Led Lamps	14
• Indoor lighting	24
• Outdoor lighting	28
• LED ROPELIGHT Strip Light	31
Control Gears	34
Electrical Fittings	36
• Sockets	39
• Switches and Covers	43
• Circuit Breaker	48

SGL

THE SUNITA GROUP LIMITED

A hand is shown holding a glowing light bulb. The bulb is illuminated from within, casting a warm, yellow light. The background is a soft, out-of-focus grey. The SGL logo is prominently displayed in the center of the image, overlaid on the bulb. The logo consists of the letters 'SGL' in a bold, black, sans-serif font. Below the logo, the text 'THE SUNITA GROUP LIMITED' is written in a smaller, black, sans-serif font. The overall composition is clean and modern, emphasizing the company's focus on lighting solutions.

SGL

THE SUNITA GROUP LIMITED

LIGHTING SOURCES

COMPACT FLUORESCENT



PRODUCT CATEGORIES

HALF SPIRAL

SGL spiral bulbs are available in various color temperatures and wattage replacements. They are great for household lights replacement and are long life light bulbs that lasts up to 8,000 hours.

- Uses up to 70% less energy

ESL15w	
Watt	15
Product Code	226001
Product Description	CFL15HS/T3/6500/E27
Volt	220-240
CCT	6500
CRI	80
Tube Size	T3
LM	750
Diameter	44
Length	138
Cap	E27
Life	8000
QTY/CTN	50
Base	2700K, E14

ESL26w	
Watt	26
Product Code	226007
Product Description	CFL26HS/T4/6500/E27
Volt	220-240
CCT	6500
CRI	80
Tube Size	T4
LM	1300
Diameter	58
Length	165
Cap	E27
Life	8000
QTY/CTN	50
Base	B22

SUPER ESL28w	
Watt	28
Product Code	226010
Product Description	CFL28HS/T3/6500/E27
Volt	220-240
CCT	6500
CRI	80
Tube Size	T3
LM	1350
Diameter	58
Length	141
Cap	E27
Life	8000
QTY/CTN	50
Base	B22

ESL32w	
Watt	32
Product Code	226012
Product Description	CFL32HS/T4/6500/E27
Volt	220-240
CCT	6500
CRI	80
Tube Size	T4
LM	1600
Diameter	58
Length	165
Cap	E27
Life	8000
QTY/CTN	50
Base	B22

SUPER ESL32w	
Watt	32
Product Code	226014
Product Description	CFL32HS/T3/6500/E27
Volt	220-240
CCT	6500
CRI	80
Tube Size	T3
LM	1600
Diameter	58
Length	141
Cap	E27
Life	8000
QTY/CTN	50
Base	B22

ESL36w	
Watt	36
Product Code	226016
Product Description	CFL36HS/T4/6500/E27
Volt	220-240
CCT	6500
CRI	80
Tube Size	T4
LM	1800
Diameter	68
Length	178
Cap	E27
Life	8000
QTY/CTN	40
Base	B22

ESL40w	
Watt	40
Product Code	226018
Product Description	CFL40HS/T4/6500/E27
Volt	220-240
CCT	6500
CRI	80
Tube Size	T4
LM	2000
Diameter	68
Length	178
Cap	E27
Life	8000
QTY/CTN	40
Base	B22

ESL42w	
Watt	42
Product Code	226020
Product Description	CFL42HS/T4/6500/E27
Volt	220-240
CCT	6500
CRI	80
Tube Size	T4
LM	2000
Diameter	68
Length	178
Cap	E27
Life	8000
QTY/CTN	40
Base	B22

ESL45w	
Watt	45
Product Code	226022
Product Description	CFL45HS/T4/6500/E27
Volt	220-240
CCT	6500
CRI	80
Tube Size	T4
LM	2000
Diameter	68
Length	173.5
Cap	E27
Life	8000
QTY/CTN	40
Base	B22

ESL55w	
Watt	55
Product Code	226024
Product Description	CFL55HS/T5/6500/E27
Volt	220-240
CCT	6500
CRI	80
Tube Size	T5
LM	2750
Diameter	78
Length	229
Cap	E27
Life	8000
QTY/CTN	20
Base	/

ESL75w	
Watt	75
Product Code	226025
Product Description	CFL75HS/T5/6500/E27
Volt	220-240
CCT	6500
CRI	80
Tube Size	T5
LM	3750
Diameter	75.5
Length	267
Cap	E27
Life	8000
QTY/CTN	10
Base	/

BIG ESL75w	
Watt	75
Product Code	226026
Product Description	CFL75HS/T5/6500/E27
Volt	220-240
CCT	6500
CRI	80
Tube Size	T5
LM	3750
Diameter	100
Length	276
Cap	E27
Life	8000
QTY/CTN	10
Base	/

ESL105w	
Watt	105
Product Code	226027
Product Description	CFL105HS/T5/6500/E27
Volt	220-240
CCT	6500
CRI	80
Tube Size	T5
LM	5250
Diameter	100
Length	292
Cap	E27
Life	8000
QTY/CTN	10
Base	/

FULL SPIRAL

SGL spiral bulbs are available in various color temperatures and wattage replacements. They are great for household lights replacement and are long life light bulbs that lasts up to 8,000 hours.

- Uses up to 70% less energy

ESL15w	
Watt	15
Product Code	226004
Product Description	CFL15FS/T3/6500/E27
Volt	220-240
CCT	6500
CRI	80
Tube Size	T3
LM	750
Diameter	41
Length	120
Cap	E27
Life	8000
QTY/CTN	50
Base	2700K, E14 Base

ESL26w	
Watt	26
Product Code	226009
Product Description	CFL26SFS/T3/6500/E27
Volt	220-240
CCT	6500
CRI	80
Tube Size	T3
LM	1300
Diameter	55
Length	106
Cap	E27
Life	8000
QTY/CTN	60
Base	/

LOTUS

SGL spiral bulbs are available in various color temperatures and wattage replacements. They are great for household lights replacement and are long life light bulbs that lasts up to 8,000 hours.

- Uses up to 70% less energy

LOTUS ESL32w	
Watt	32
Product Code	226015
Product Description	CFL32L/T4/6500/E27
Volt	220-240
CCT	6500
CRI	80
Tube Size	T4
LM	1600
Diameter	63
Length	168
Cap	E27
Life	8000
QTY/CTN	40
Base	/

LOTUS ESL75w	
Watt	75
Product Code	226030
Product Description	CFL75L/T5/6500/E27
Volt	220-240
CCT	6500
CRI	80
Tube Size	T5
LM	3750
Diameter	114
Length	255
Cap	E27
Life	8000
QTY/CTN	6
Base	/

MUSHROOM

SGL spiral bulbs are available in various color temperatures and wattage replacements. They are great for household lights replacement and are long life light bulbs that lasts up to 8,000 hours.

- Uses up to 70% less energy

ESL35w	
Watt	35
Product Code	226028
Product Description	CFL35HS/T4/6500/E27
Volt	220-240
CCT	6500
CRI	80
Tube Size	T4
LM	1750
Diameter	95
Length	165
Cap	E27
Life	8000
QTY/CTN	20
Base	2700K, E14

LED LAMPS



PRODUCT CATEGORIES

COLOR LED

- This Globe-shaped LED emits a yellow light while only using 1 watt and has an average life of 15,000 Hours.
- Colors Available



LED 1W	
Watt	1
Product Code	148003
Product Description	LEDIYELLOW/G45/E27
Volt	220-240
CAP	E27
LM	55
Life	15000
QTY/CTN	100
Base	E27/B22 AVAILABLE

CLASSIC LED LAMPS

These LED Globes are high performance LED light bulbs, which are direct replacements to traditional light bulbs. They are 100% mercury free making them better for the environment.

Additional benefits include no UV or infrared emissions, relatively cool running performance, ability to withstand vibration (no filament), no warm-up time or waiting to turn on and no detrimental effects from rapid cycling on and off.

LED 3W	
Watt	3
Product Code	148013
Product Description	LED3/G45/6500/E27
Volt	165-265V
CAP	E27
LM	300
Life	15000
QTY/CTN	100
CCT	6500
Base	2700K, B22, E27

LED 5W	
Watt	5
Product Code	148017
Product Description	LED5/A50/6500/E27
Volt	165-265V
CAP	E27
LM	550
Life	15000
QTY/CTN	50
CCT	6500
Base	2700K, B22,E27

LED 7W	
Watt	7
Product Code	148021
Product Description	LED7/A55/6500/E27
Volt	165-265V
CAP	E27
LM	770
Life	15000
QTY/CTN	50
CCT	6500
Base	2700K, B22, E27

LED 9W	
Watt	9
Product Code	148025
Product Description	LED9/A60/6500/E27
Volt	165-265V
CAP	E27
LM	990
Life	15000
QTY/CTN	50
CCT	6500
Base	2700K, B22, E27

LED 12W	
Watt	12
Product Code	148029
Product Description	LED12/A65/6500/E27
Volt	165-265V
CAP	E27
LM	1320
Life	15000
QTY/CTN	50
CCT	6500
Base	2700K, B22, E27

LED 15W	
Watt	15
Product Code	148033
Product Description	LED15/A80/6500/E27
Volt	165-265V
CAP	E27
LM	1650
Life	15000
QTY/CTN	50
CCT	6500
Base	2700K, B22, E27

ECO LED LAMPS

ECO LED Bulb available in daylight and warm light.

ECO LED Bulb 18W E27	
Product Code	ECOLED18W7500
Diameter	80mm
Volt	165-265V
CCT	7500K / 3000K
LM	100/lms/w
CAP	E27 / B22
Watt	18w
Life Hours	10000+

ECO LED Bulb 48W E27	
Product Code	ECOLED48W7500
Diameter	120mm
Volt	165-265V
CCT	7500K / 3000K
LM	100/lms/w
CAP	E27 / E40
Watt	48w
Life Hours	10000+

ECO LED Bulb 28W E27	
Product Code	ECOLED28W7500
Diameter	100mm
Volt	165-265V
CCT	7500K / 3000K
LM	100/lms/w
CAP	E27 / B22
Watt	28w
Life Hours	10000+

ECO LED Bulb 58W E27	
Product Code	ECOLED58W7500
Diameter	135MM
Volt	165-265V
CCT	7500K / 3000K
LM	100/lms/w
CAP	E27 / B22 / E40
Watt	58w
Life Hours	10000+

LED CANDLE

Candle-shaped LED bulbs are available in various models. They are high-performance LED light bulbs, which are direct replacements for traditional light bulbs. They are 100% mercury free making them better for the environment.

Additional benefits include no UV or infrared emissions, relatively cool running performance, ability to withstand vibration (no filament), no warm-up time or waiting to turn on and no detrimental effects from rapid cycling on and off.

LED 5.5W (Plastic Cover)	
Watt	5.5
Product Code	148060
Product Description	LEDCND3/PLASTIC COVER/6500/E14
Volt	165-265V
CAP	E14
LM	500
Life	15000
QTY/CTN	50
CCT	6500
Availability	2700K

LED 4.5W (Plastic Cover)	
Watt	4.5
Product Code	148062
Product Description	LEDCND3WITH TAIL/PLASTIC COVER/6500/E14
Volt	165-265V
CAP	E14
LM	400
Life	15000
QTY/CTN	50
CCT	6500
Availability	2700K

LED 5.5W (Plastic Cover)

Watt	5.5
Product Code	148045
Product Description	LEDCND3/plastic cover/ALU case/6500/E14
Volt	165-265V
CAP	E14
LM	500
Life	15000
QTY/CTN	50
CCT	6500
Availability	5W,7W

LED 4.5W (Glass Cover)

Watt	4.5
Product Code	148053
Product Description	LEDCND3/GLASS COVER/6500/E14
Volt	165-265V
CAP	E14
LM	400
Life	20000
QTY/CTN	50
CCT	6500
Availability	2700K

LED 3W (Plastic Cover)

Watt	4
Product Code	148057
Product Description	LEDCND2CLEAR/2700 /E14
Volt	165-265V
CAP	E14
LM	400
Life	15000
QTY/CTN	50
CCT	2700
Availability	4W,6W

LED 3W (Plastic Cover)

Watt	3
Product Code	148055
Product Description	LEDCND3WITH TAIL/GLASS COVER/6500/E14
Volt	165-265V
CAP	E14
LM	270
Life	20000
QTY/CTN	50
CCT	6500
Availability	2700K

LED FILAMENT LAMP

LED Filament lamps - G45

Type	G45
Watt	2W, 4W
CAP	E27/B22
CCT	3000/6500k
PF	0.5
Voltage	165-265v

LED Filament lamps - C35

Type	C35
Watt	4W, 6W
CAP	E27/B22
CCT	3000/6500k
PF	0.5
Voltage	165-265v

LED Filament Lamp - A60

Type	A60
Watt	4W, 6W
CAP	E27/B22
CCT	3000/6500k
PF	0.5
Voltage	165-265v

LED Filament Lamps - ST64

Type	ST64
Watt	4W, 6W, 8W
CAP	E27/B22
CCT	3000/6500k
PF	0.5
Voltage	165-265v

LED Filament lamps - G80

Type	G80
Watt	4W, 6W, 8W
CAP	E27/B22
CCT	3000/6500k
PF	0.5
Voltage	165-265v

LED MR16

MR16- series spotlight replacement bulb for traditional MR16 halogen Bi-Pin lamps. our products save you 78% on energy costs as compared to a halogen lamp. SGL MR16 has no mercury content.

- Available in 5W

LED MR16	
Watt	5
Product Code	148064
Product Description	JCDR5/2700/GU5.3
Volt	165-265V
CAP	GU5.3
LM	550
Life	15000
QTY/CTN	100
CCT	2700/6500
Base	GU5.3/GU10

LINEAR LED LAMPS

- Saves energy
- High powered LEDs
- Environmentally friendly (mercury free)
- Longer Life
- Instant On
- Immediate full brightness

Linear LED 10W	
Watt	10
Product Code	148067
Product Description	Linear LED10/T8/6500/G13
Tube Size	T8
Volt	165-265V
CAP	G13
LM	825
Length	60cm
CCT	6500

Linear LED 20W	
Watt	20
Product Code	148068
Product Description	Linear LED20/T8/6500/G13
Tube Size	T8
Volt	165-265V
CAP	G13
LM	1650
Life	20000
CCT	6500



SGL

THE SUNITA GROUP LIMITED

**INDOOR
LIGHTING**

SLIM PANEL LIGHT

36W	
Watt	36W
Diameter MM	250
Hole Size MM	175
Height	20
RA	70
PF	0.5
LM/W	90-100LM/W
CCT	3000/4000/6500K
LED/2835	252
Round Non-Isolated Driver 165-265V	YES
Warranty	2 YEARS
CTN Size	52x49.5x52cm
PCS/CTN	40

36W	
Watt	36W
Diameter MM	250
Hole Size MM	175
Height	20
RA	70
PF	0.5
LM/W	80-90LM/W
CCT	3000/4000/6500K
LED/2835	240
Round Non-Isolated Driver 165-265V	IC DRIVER
Warranty	1 YEAR
CTN Size	52x49.5x52cm
PCS/CTN	40

48W	
Watt	48W
Diameter MM	300
Hole Size MM	205
Height	20
RA	70
PF	0.5
LM/W	80-90LM/W
CCT	3000/4000/6500K
LED/2835	288
Round Non-Isolated Driver 165-265V	IC DRIVER
Warranty	1 YEAR
CTN Size	63.5x52x32.5cm
PCS/CTN	20

48W	
Watt	48W
Diameter MM	300
Hole Size MM	205
Height	20
RA	70
PF	0.5
LM/W	90-100LM/W
CCT	3000/4000/6500K
LED/2835	336
Round Non-Isolated Driver 165-265V	YES
Warranty	2 YEARS
CTN Size	63.5x52x32.5cm
PCS/CTN	20

SURFACE PANEL LIGHT

36W	
Watt	36W
Diameter MM	250
Hole Size MM	105
Height	20
RA	70
PF	0.5
LM/W	90-100LM/W
CCT	3000/4000/6500K
LED/2835	252
Round Non-Isolated Driver 165-265V	YES
Warranty	2 YEARS
CTN Size	52x49.5x52cm
PCS/CTN	40

36W	
Watt	36W
Diameter MM	250
Hole Size MM	105
Height	20
RA	70
PF	0.5
LM/W	80-90LM/W
CCT	3000/4000/6500K
LED/2835	240
Round Non-Isolated Driver 165-265V	IC DRIVER
Warranty	1 YEAR
CTN Size	52x49.5x52cm
PCS/CTN	40

48W	
Watt	48W
Diameter MM	300
Hole Size MM	160
Height	20
RA	70
PF	0.5
LM/W	80-90LM/W
CCT	3000/4000/6500K
LED/2835	288
Round Non-Isolated Driver 165-265V	IC DRIVER
Warranty	1 YEAR
CTN Size	63.5x52x32.5cm
PCS/CTN	20

48W	
Watt	48W
Diameter MM	300
Hole Size MM	160
Height	20
RA	70
PF	0.5
LM/W	90-100LM/W
CCT	3000/4000/6500K
LED/2835	336
Round Non-Isolated Driver 165-265V	YES
Warranty	2 YEARS
CTN Size	63.5x52x32.5cm
PCS/CTN	20

LED BATTEN LIGHT

18W	
Watt	18W
Material	PC
Length MM	600
Width MM	70
RA	80
PF	50
LM/W	100
CCT	3000/4000/6500K
LED/2835	96
ISOLATED DRIVER 165-265V	YES
Warranty	2 YEARS
FEATURES	*ELEGANT DESIGN *PC BODY *PC DIFFUSER *FOR INDOOR USE
PCS/CTN	20

36W	
Watt	36w
Material	PC
Length MM	1200
Width MM	70
RA	80
PF	50
LM/W	100
CCT	3000/4000/6500K
LED/2835	192
ISOLATED DRIVER 165-265V	YES
Warranty	2 YEARS
FEATURES	*ELEGANT DESIGN *PC BODY *PC DIFFUSER *FOR INDOOR USE
PCS/CTN	20



SGL

THE SUNITA GROUP LIMITED

OUTDOOR LIGHTING

WALL LIGHT

4X1W	
Watt	4X1W
Material	PLASTIC
Width MM	90
Height MM	70
RA	80
PF	50
LM/W	80
CCT	3000/4000/6500K
LED/2835	4
ISOLATED DRIVER 165-265V	YES
Warranty	2 YEARS
CTN Size	37x26x31cm
PCS/CTN	72

6X1W	
Watt	6X1W
Material	PLASTIC
Width MM	140
Height MM	70
RA	80
PF	50
LM/W	80
CCT	3000/4000/6500K
LED/2835	6
ISOLATED DRIVER 165-265V	YES
Warranty	2 YEARS
CTN Size	37x26x31cm
PCS/CTN	50

LED BATTEN LIGHT

25W	
Watt	25W
Material	PC
Length MM	600
Width MM	50
RA	80
PF	50
LM/W	100
CCT	3000/4000/6500K
LED/2835	66
ISOLATED DRIVER 165-265V	YES
Warranty	2 YEARS
FEATURES	*ELEGANT DESIGN *PC BODY *PC DIFFUSER *FOR INDOOR USE
PCS/CTN	20

50W	
Watt	50W
Material	PC
Length MM	1200
Width MM	50
RA	80
PF	50
LM/W	100
CCT	3000/4000/6500K
LED/2835	130
ISOLATED DRIVER 165-265V	YES
Warranty	2 YEARS
FEATURES	*ELEGANT DESIGN *PC BODY *PC DIFFUSER *FOR INDOOR USE AND OUTDOOR USE
PCS/CTN	20



SGL

THE SUNITA GROUP LIMITED

LED

**ROPELIGHT
STRIP LIGHT**

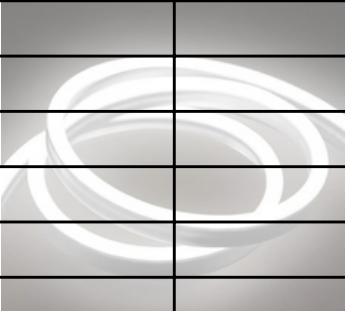
LED ROPELIGHT

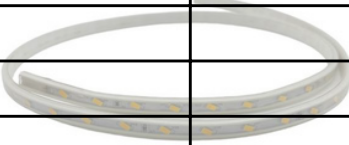
Usage


SUITABLE FOR INDOOR AND OUTDOOR USE, WATERPROOF

COLORS

AVAILABLE IN WARM, WHITE, GOLD, BLUE, GREEN, RED, PINK, BLUE

NEON PROFILE			
STRIP DIA			5MM
LED PER METER			240
LED TYPE			2835
ROLL LENGTH			100Y
CTN SIZE			32.8x32.8x14.5cm
PCS/CTN			1

SINGLE			
STRIP DIA			6MM
LED PER METER			52
LED TYPE			5630
ROLL LENGTH			100Y
CTN SIZE			32.8x32.8x11.5cm
PCS/CTN			1

DOUBLE			
STRIP DIA			9MM
LED PER METER			120
LED TYPE			2835
ROLL LENGTH			100Y
CTN SIZE			32.8x32.8x13cm
PCS/CTN			1

TRIPLE	
STRIP DIA	11MM
LED PER METER	180
LED TYPE	2835
ROLL LENGTH	100Y
CTN SIZE	32.8x32.8x14.5cm
PCS/CTN	1

STAR	
STRIP DIA	15MM
LED PER METER	120
LED TYPE	2835
ROLL LENGTH	100Y
CTN SIZE	32.8x32.8x14.5cm
PCS/CTN	1

LED STRIP LIGHT 12V WITH TAPE 120LED PER METER CUT EVERY 1CM	
STRIP DIA	9MM
LED PER METER	120
LED TYPE	2835
ROLL LENGTH	5M
CTN SIZE	33x33x30cm
PCS/CTN	100

LED STRIP LIGHT 12V WITH TAPE 240LED PER METER CUT EVERY 1CM	
STRIP DIA	9MM
LED PER METER	240
LED TYPE	2835
ROLL LENGTH	5M
CTN SIZE	33x33x30cm
PCS/CTN	100

POWER CORD	
STRIP DIA	5/6/9/11MM
ROLL LENGTH	20CM
CTN SIZE	32.7x24.13.3cm
PCS/CTN	150

POWER CORD WITH H PINS	
STRIP DIA	5/6/9/11MM
ROLL LENGTH	20CM
CTN SIZE	32.7x24.13.3cm
PCS/CTN	100



SGL

THE SUNITA GROUP LIMITED

**CONTROL
GEARS**

Ballast with Lamp Holder



Ballast With Wire



Electronic Lamp Holder



Terminal Ballast



Ballast with Lamp Holder



SGL

THE SUNITA GROUP LIMITED

**ELECTRICAL
FITTINGS**

**B22 Lamp Holder
4A/250V**



**E27 Lamp Holder
-New Model
4A/250V**



**E27 Lamp Holder
-Old Model
4A/250V**



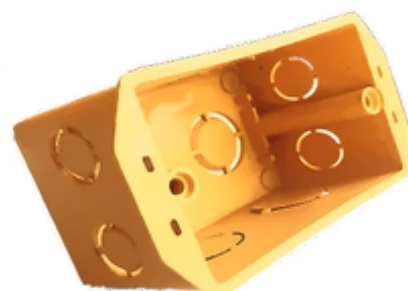
**Earthed Plug
16A/250V**



Junction Box A



Junction Box B



Junction Box C



**Lamp Holder For
Decorative Light
- New Model 4A/250V**



**Lamp Holder For
Decorative Light
- Old Model 4A/250V**



**Rubber Plug
6A/250V**



**Wall lamp holder E27
MAX 60W/ 250V**



SOCKETS

**2 Pin Socket
16A/250V**



**2 Pin Socket B
16A/250V**



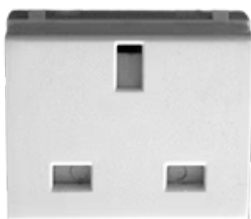
**2 x USB Charger Socket
2.5A/ 250V**



Audio Video Socket



**British Socket
16A/250V**



**Earth Socket
16A/250V**



**1 Socket inside wall
10A/250V**



**Waterproof Socket
16A/250V IP65**



**Outside Wall socket
10A/250V**



Network socket



Satellite socket



Satellite Socket



Satellite Socket



**Socket with child safety
16A/250V**



Telephone Socket 2 Line



Telephone Socket 4 Line



Telephone Socket 8 Line





SWITCHES & COVERS

**1 Switch & 1 Socket Inside
Wall
10A/250V**



**1 Switch Inside Wall
10A/250V**



**1 Way Switch
16A/250V**



**1 Way Switch With Lamp
16A/250V**



**2 Switch & 1 Socket Inside
Wall
10A/250V**



**2 Switch Inside Wall
10A/250V**



**3 Switch Inside Wall
10A/250V**



**Bell Switch Inside Wall
10A/250V**



**Door Bell Switch
16A/250V**



**Door Bell With Lamp
16A/250V**



**Inside Wall Heater Switch
32A**



**Inside Wall Heater Switch
32A**



**Inside Wall Heater Switch
32A Round**



**Light Dimmer Switch
1000W/250V**



**Outside Wall 1 Way Switch
10A/250V**



**Outside Wall Bell Switch
10A/250V**


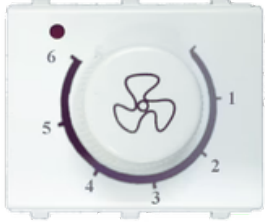


**Outside Wall Heater Switch
32A**



**Dimmer
600W/250V**



Sound Dimmer 600W/250V	Light Dimmer 600W/250V	Fan Dimmer 600W/250V
		

SWITCH COVERS



Colors Available





CIRCUIT BREAKER

Construction and Feature

- Protection against both overload and short circuit
- High short circuit capacity
- Easy mounting onto 35mm DIN rail

Safety Breaker BH-P New Type 60A and 100A



Pole	1P, 2P, 3P
Rated Voltage	230/400V
Color	Black
Certificate	IEC
Rated Current	60A, 100A
Rated Frequency	50/60hz
Breaking Capacity	4.5KA
Standard	IEC60898

Circuit Breaker 3 Pole 63A



Pole	1P, 2P, 3P
Rated Voltage	AC230/400V
Rated Current	(A) 10, 16, 20, 25, 32, 40, 63
Tripping Curve	B,C,D
High Short Circuit Breaking Capacity	(Icn) 6kA
Rated Frequency	50/60hz
Energy Limiting Class	3
Rated Impulse Withstand Voltage	6.2kV

ADDITIONAL COMMENTS

SGL

THE SUNITA GROUP LIMITED

GET IN TOUCH

Whether you are looking for more information on our products, provide feedback, looking for save energy solution or career opportunities.

We will be please to hear from you.

- 📍 Plot 56, Area A3/1, 10th of Ramadan City, Egypt.
- ☎ 012 101 102 00
- ✉ sales@sglegypt.com
- 🖱 www.sglegypt.com