



gingerwhite

**Art Printing Service**  
Portfolio



ART BOX



WOOD PANELS



ACRYLIC



FRAMED PRINT



CANVAS



PRISMS



PRINTS



MAGNETS

# CONTENTS

## SERVICES

<b>PRINTING</b>	5
Framing	6
Packaging	7
Fulfilment	7

## PRODUCTS

Prints	11
Budget papers	12
Premium papers	23

<b>FRAMED</b>	14
Classic frames	16
Box frames	18
Spacer frames	20
Surface frames	22
Swoop frames	24
Gloss frames	26
Ready made frames	28
Special edition frames	28
Frame finishes	30

<b>CANVAS</b>	32
Canvas substrates	34
Canvas stretcher bars	35
Canvas finishes	36
Framed canvas	37

<b>MOUNTED</b>	38
Foam board	40
Gatorboard	41
Foamex	42
Dibond	43

<b>ACRYLIC</b>	44
Acrylic panels	46
Acrylic prisms	47

<b>WOODEN</b>	48
Wood panels	50
Art box	51
Desktop blocks	52

<b>MERCHANDISE</b>	54
Magnets	56
Mini prints	57
Desktop blocks	58
Acrylic prism	59

Contact us on **0207 359 3964**, online at [www.gingerwhite.co.uk](http://www.gingerwhite.co.uk) or visit our shop in Bethnal Green, London

# Services

Printing | Framing | Fulfilment



## PRINTING

# Turning photos into prints

Using the latest wide format giclée technology, we can produce exceptional prints on a range of fine art and photographic substrates.



### Printing highlights

- 100+ year colour guarantee
- Professional colour management
- 12 colour Giclée printers
- Original brand name inks and substrates





## FRAMING

**Handmade in the UK** by our team of specialist picture framers

Our picture framing service is highly customisable; featuring an unlimited variety of frames, papers, mounts, glazes and finishes.

Each custom frame is created using a highly refined manufacturing process which combines precision machining with expert handfinishing.

We do not have minimum order quantities and standard production lead-times are 7 working days.

## PACKAGING

Our **unrivalled packaging** standards ensure products arrive in perfect condition



**We received our picture yesterday in California - it arrived so quickly, in perfect condition and looks fabulous!"**

S Bloom

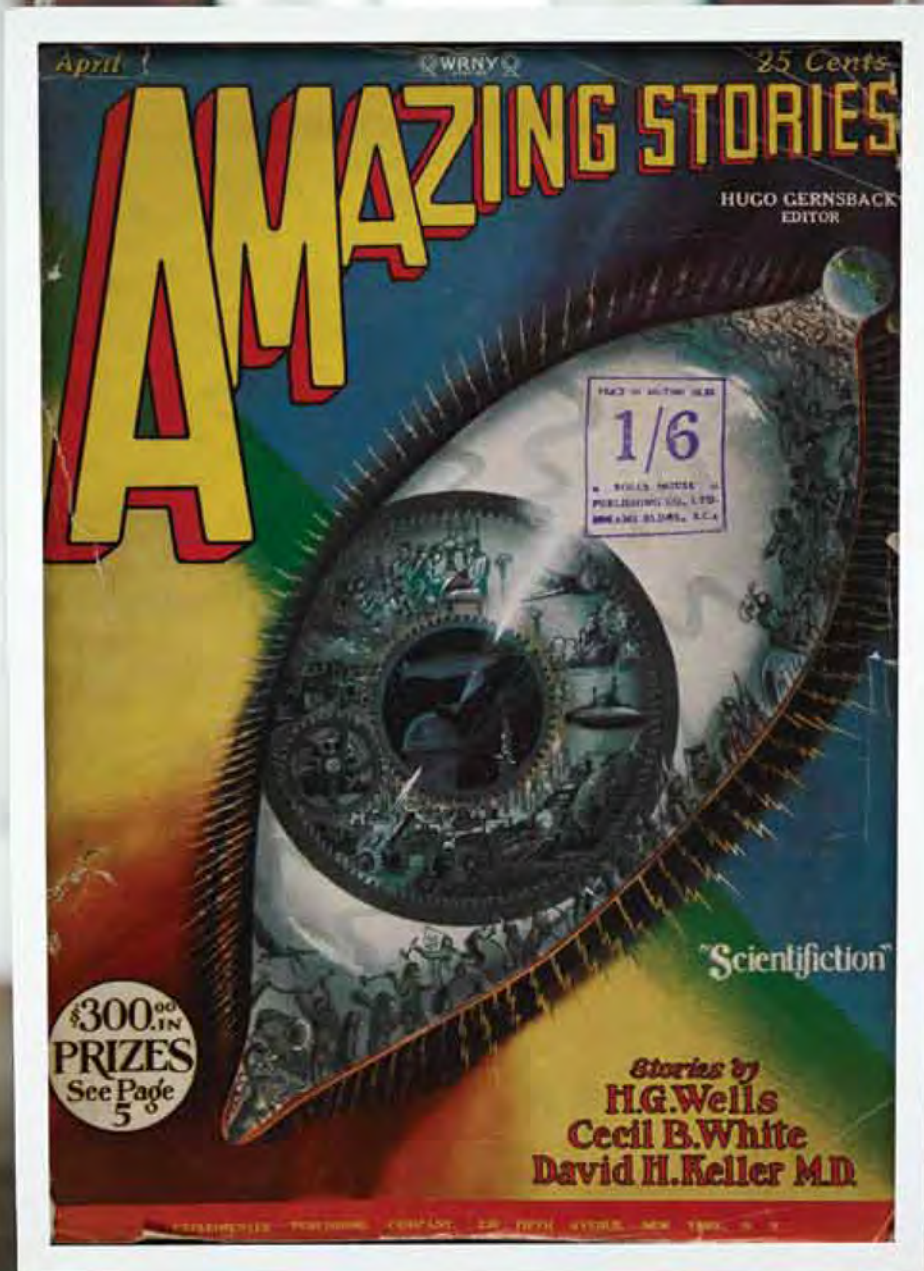
Protective sleeves, plastic corner guards and heavy-duty cardboard boxes minimise the risk of breakages or transit damage.

On the rare occasions where incidents do occur we strive to ensure collection and replacement are organised immediately and shipped on a priority service without any fuss.

### **Quality control check before packing**

- Secure, robust packing standards
- No pricing information included in packages
- Making it perfect for gifts

Contact us on **0207 359 3964**, online at **[www.gingerwhite.co.uk](http://www.gingerwhite.co.uk)** or visit our shop in Bethnal Green, London



## FULFILMENT

# Shipping anywhere in the world as fast as nextday

Orders are dispatched using couriers or recorded mail.

Unframed prints are typically shipped within 3-5 working days.  
Canvas and framed prints are shipped within 5-7 working days.

### Fulfilment highlights

- Fast, custom fulfilment
- No prices on delivery notes
- Recorded delivery
- Making it perfect for gifting



A collage of various framed and mounted photographs and prints in a room with a brick wall and a wicker basket. The images include a classical painting of a woman, a modern photograph of a person, a collage of four photos, a photo of a person on a horse, a photo of a person in a hat, and a photo of a person lying down. A wicker basket is visible on the left side of the image.

# Products

Prints | Framed | Canvas | Mounted  
Acrylic | Wooden | Merchandise

## PRINTS

# A complete range of **specialist papers**

We support a full range of branded and nonbranded papers covering matt, lustre, gloss and metallic finishes. Each substrate is individually profiled for our printers, ensuring highly accurate and consistent reproductions on every paper we offer.

### **BUDGET PAPERS**

- 170gsm, Semi-Gloss Poster Paper (SGPP)
- 180gsm, Matt Poster Paper (MUPP)
- 240gsm, Lustre Photo Paper (LPP)
- 240gsm, Smooth Art Paper (SAP)
- 280gsm, Metallic Lustre (ML)
- 280gsm, Museum Fine Art (MFA)
- 315gsm, Cold Press Watercolour Paper (CPWP)

### **PREMIUM PAPERS**

- 260gsm, Hahnemühle Photo Glossy (HPG)
- 260gsm, Hahnemühle Photo Lustre (HLP)
- 285gsm, Hahnemühle Fine Art Pearl (HFAP)
- 308gsm, Hahnemühle Photo Rag (HPR)
- 310gsm, Hahnemühle German Etching (HGE)

Contact us on **0207 359 3964**, online at **[www.gingerwhite.co.uk](http://www.gingerwhite.co.uk)** or visit our shop in Bethnal Green, London

## BUDGET PAPERS

**170gsm**

### **Semi-Gloss Poster Paper (SGPP)**

An economical semi-gloss poster paper with a high white satin finish and smooth microporous coating for accurate photo reproduction.

**180gsm**

### **Matt Poster Paper (MPP)**

An affordable barrier coated poster paper perfect for volume projects requiring the best quality art substrate at the most competitive price.

**240gsm**

### **Lustre Photo Paper (LPP)**

A premium photographic paper with a satin lustre finish. Preferred by professional photographers, the lustre finish provides a subtle pearl-like texture. Supporting deeper colour-saturation than matt papers, this paper produces impressive colour depth and strikingly intense blacks.

**240gsm**

### **Smooth Art Paper (SAP)**

A high-quality, smooth matt paper with a light, fine-grain surface texture. This paper is particularly suited to contemporary illustration and photography. Image reproduction is sharp, crisp and vibrant, with great density and vivid colours.

**280gsm**

### **Metallic Lustre (ML)**

A beautiful textured finish on a heavy-weight silver resin coated paper resembling the look and feel of a metallic surface. Achieves incredible detail with a great tonal range and is especially suited for black and white and colour photography.

**280gsm**

### **Museum Fine Art (MFA)**

A gently textured etching paper designed for museum-quality reproductions. This beautiful and versatile art paper is particularly suited to giclée reproductions of artworks and paintings. Ideal for premium colour and monochrome prints.

**315gsm**

### **Cold Press Watercolour Paper (CPWP)**

A rough-textured, coarse structured surface designed for high-quality art and photographic reproductions using giclée techniques. Particularly well suited to reproducing collages and graphic illustrations featuring solid blocks of colour.

## PREMIUM PAPERS

**260gsm**

### **Hahnemühle Photo Glossy (HPG)**

A bright, high-gloss paper with an ultra smooth surface. Wide colour gamut and microporous coating results in pro-lab quality reproductions. Particularly popular with consumer photographers due to the flat finish and high-gloss sheen.

**260gsm**

### **Hahnemühle Photo Lustre (HPL)**

This specialist photo paper has a semi-gloss, velvet finish and guarantees long-lasting fade resistant prints. The paper has deeper colour saturation than matt paper, is thicker than traditional consumer papers and is more resistant to fingerprints and smudges.

**285gsm**

### **Hahnemühle Fine Art Pearl (HFAP)**

A specialist photographic paper ideally suited to black and white reproductions requiring a silver gelatin, c-type finish. Fine Art Pearl meets the highest industry standards regarding density, colour gamut, colour graduation and image sharpness while preserving the special touch and feel of genuine art paper.

**308gsm**

### **Hahnemühle Potorag (HPR)**

A heavy-duty matt paper made of 100% cotton rag with a natural white tone and superb black saturation. Popular with professional photographers, this paper produces very high-quality print reproductions.

**310gsm**

### **Hahnemühle German Etching (HGE)**

A heavy-duty paper with a more textured finish than Potorag (HPR), the velvety matt surface is optimised for high-contrast prints and works brilliantly for limited editions. The paper has a warm white hue providing a perfect surface for reproducing paintings, lithographs and fine art photography.

## FRAMED

# Handmade by in the UK by Guild recognised framers

Our framed prints combine the finest quality materials with the highest levels of craftsmanship.

Each element of the framing service is highly customisable, featuring an unlimited range of frames, papers, mounts, glazes and finishes.

All framed prints are delivered fully strung, ready for hanging.



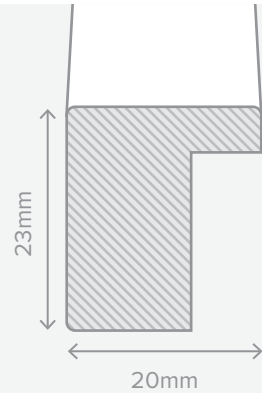
## CLASSIC FRAME

Our most popular picture frame

Created from high-quality wood, milled with simple clean lines and presented with a satin finish.

### Dimensions

- Square profile
- 20mm (front face)
- 23mm (depth from wall)



### Frame highlights

- Eternally popular frame
- Simple, elegant design
- Custom mount, cut perfectly to your image
- Delivered fully strung ready for hanging
- Choice of colours, including gilts
- Available in sizes ranging from 10" x 8" to 44" x 32"
- Available in ready made or custom specifications

Available in:



Black



White



Brown



Silver



Gold



Natural





## BOX FRAME

A modern design adding depth to your pictures

Our box frame is milled from solid ash, hand stained by our team and finished with a specialist wax to accentuate the grain.

### Dimensions

- Box profile
- 20mm (front face)
- 33mm (depth from wall)



### Frame highlights

- Classic deep frame
- Solid ash with hand stained finish
- Custom mount, cut perfectly to your image
- Delivered fully strung ready for hanging
- Available in sizes ranging from 10" x 8" to 44" x 32"
- Available in ready made or custom specifications

Available in:



Black



White



Brown



Natural



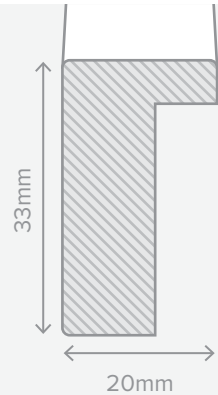
## SPACER FRAME

A contemporary twist on the traditional box frame

The Spacer frame has a deep fillet to create additional depth for displaying artworks or photographs. Prints are typically backmounted, rather than a traditional front mount, creating a modern contemporary look.

### Dimensions

- Box profile
- 20mm (front face)
- 33mm (depth from wall)



### Frame highlights

- Contemporary finish suited to back mounted prints
- Solid Ash with hand stained finish
- Delivered fully strung ready for hanging
- Available in sizes ranging from 10" x 8" to 44" x 32"
- No window mount
- Available in ready made or custom specifications

Available in:



Black



White



Brown



Natural



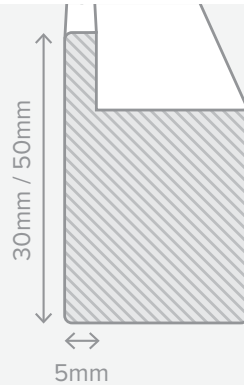
## SURFACE FRAME

Full bleed pictures with a thin stylish profile

The Surface frame provides a subtle, contemporary surround. The frame is very thin, has a smooth satin texture and comes unglazed, with the image front mounted flush to the surface edge.

### Dimensions

- Deep profile
- 5mm (front face)
- 30mm or 50mm (depth from wall)



### Frame highlights

- Flush surface mount
- Laminated finish for added protection
- Lightweight and robust
- Choice of depths
- Delivered fully strung ready for hanging
- Available in sizes ranging from 10" x 8" to 44" x 32"
- Available in ready made or custom specifications

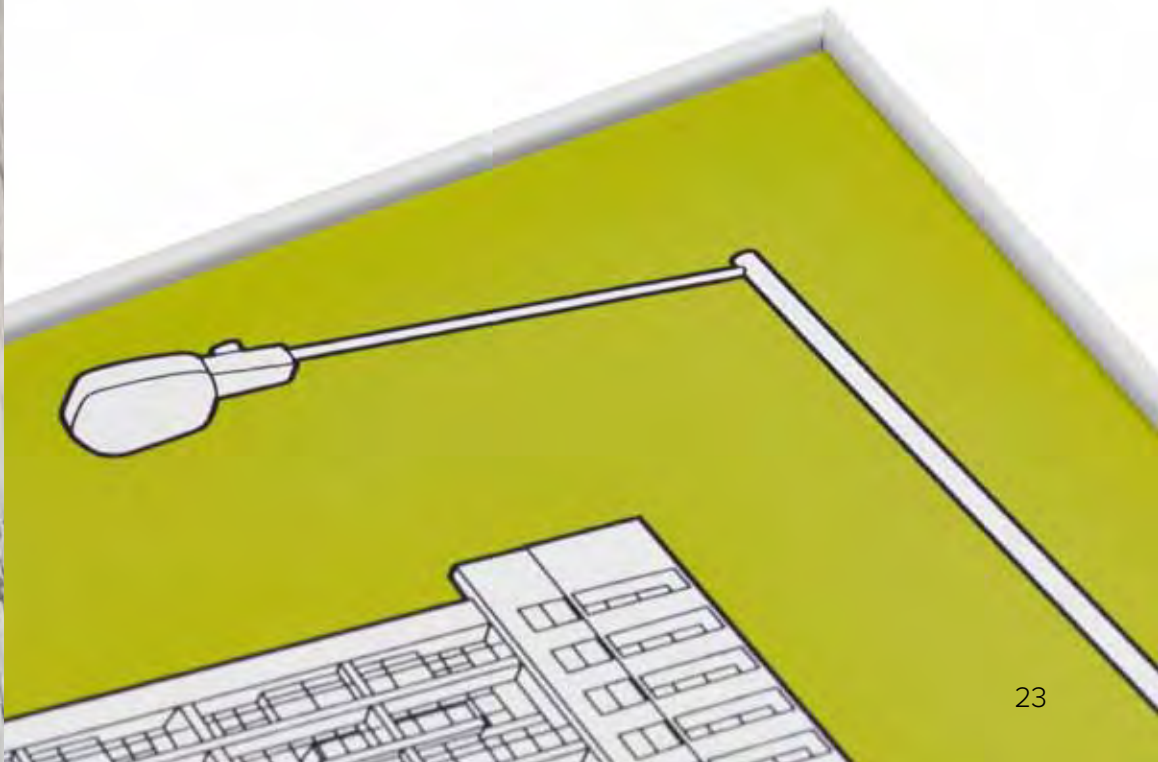
Available in:



Black



White



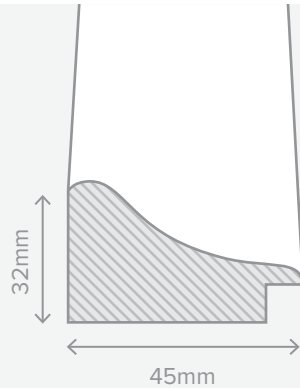
## SWOOP FRAME

Curved profile draws attention to your image

A solid pine frame with a decorative curved profile and a smooth, satin finish. The Swoop is solid, shapely and makes a real impact.

### Dimensions

- Curved profile
- 45mm (front face)
- 32mm (depth from wall)



### Frame highlights

- Exceptional value
- Solid pine with a smooth satin finish
- Delivered fully strung ready for hanging
- Available in sizes ranging from 14" x 11" to 44" x 32"
- Available in ready made or custom specifications

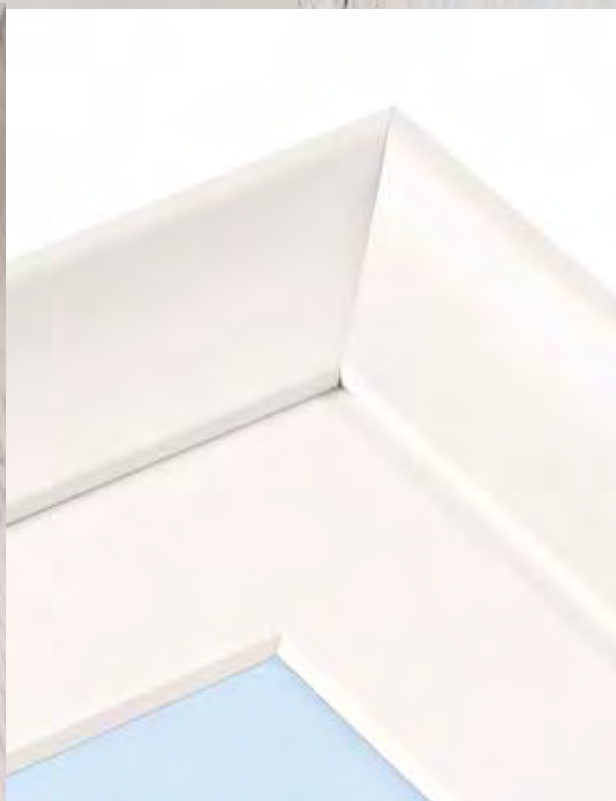
Available in:



Black



White





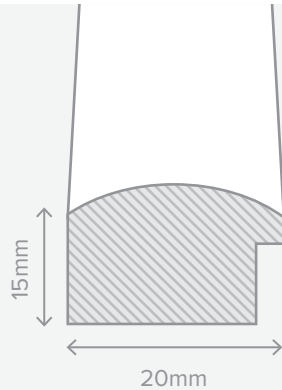
## GLOSS FRAME

A sophisticated and stylish option

The Gloss frame has a high shine, lacquered finish creating a highly sophisticated look.

### Dimensions

- Rounded profile
- 39mm (front face)
- 15mm (depth from wall)



### Frame highlights

- High-quality finish suited to luxury interiors
- Perfect for colour and black and white photography
- Delivered fully strung ready for hanging
- Available in sizes ranging from 14" x 11" to 44" x 32"
- Available in ready made or custom specifications

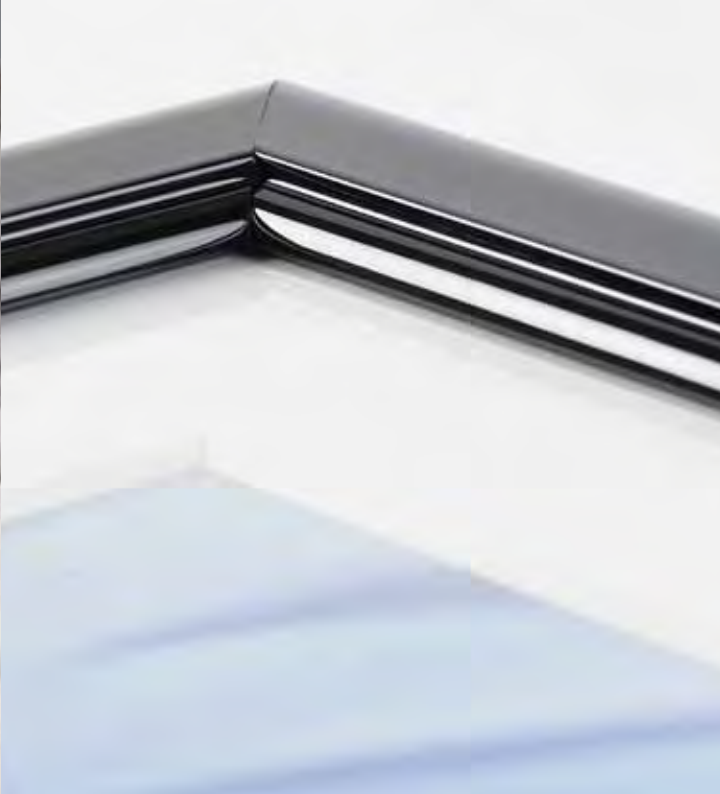
Available in:



Black



White



## READY MADE FRAMES

All six of our core frame mouldings come in five cost-effective, ready made sizes with special discount pricing.

### Ready made frame sizes:

- 28cm x 35.5cm
- 30cm x 40cm
- 40cm x 50cm
- 50cm x 70cm
- 70cm x 100cm



You simply decide whether you require art or photographic paper and a white, off-white or black mount (excluding spacer and surface frames which do not come with mounts).

Those needing different sizes or bespoke frame specification can create a custom framed print by changing any of the following components: frame, paper, mount(s), glaze or finish.

## SPECIAL EDITION FRAMES

We have relationships with every major framing supplier and our design team can help create and source any special frames required for bespoke commissions or interior design projects.



## FRAME FINISHES

### PICTURE MOUNTS

Our standard mounts come in three colourways; in three different depths (1.4mm, 2.0mm or 3.2mm). All mounts are 100% acid free and will not discolour or fade with age.

- Snow white
- Hayseed (off-white)
- Black

### SPECIAL EDITION MOUNTS

We can frame your pictures using single, double or triple mounts.

Designs can feature white or black core mounts, additional grooves as well as spacers or fillets.

We support many alternative colourways to our standard range and can finish your pictures with a traditional window mount, float mount, close mount or back mount.

### FRAMING GLAZES

Choose from three types of glaze for finishing your framed pictures:

- 2mm water white float glass;
- Clear acrylic plexiglass; and
- Invisible museum glass.

Float glass is the standard industry glaze used in most framed pictures.

Plexiglass provides increased UV protection, is extremely robust and offers less glare than float glass.

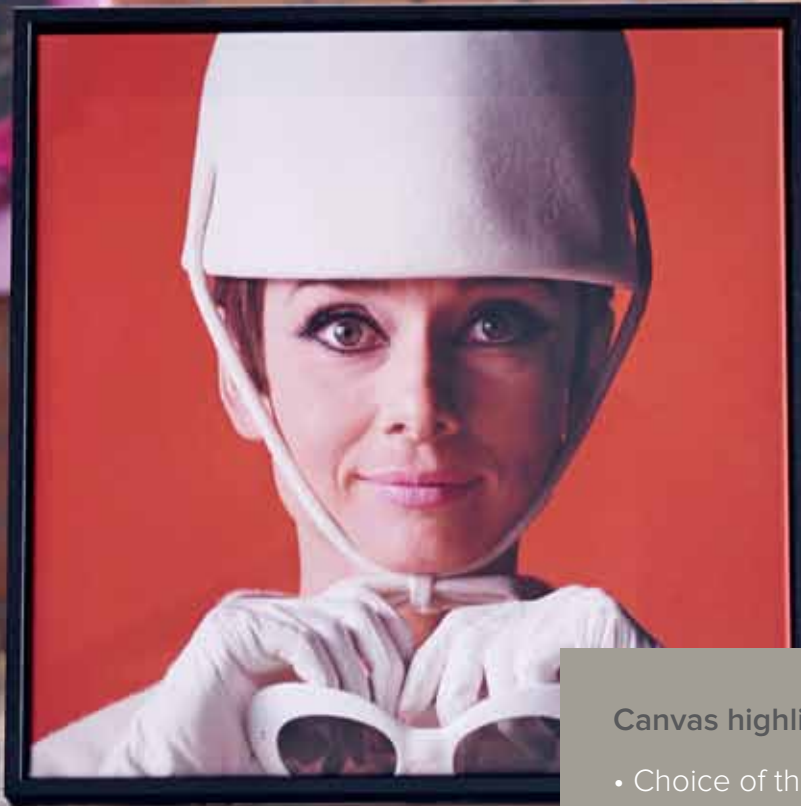
Invisible museum glass offers the clearest possible glazing option. The glaze has very low reflective properties, appearing as though no glass is present in the picture. Creates genuinely stunning results.



CANVAS

## **Handmade** by canvas craftsmen

Our enduringly popular fine art canvases transform any image into a beautiful work of art. Each canvas is produced using a 12 colour giclée fine art printing process and hand finished by one of the UK's most experienced canvas framing teams.



### Canvas highlights

- Choice of three different canvas substrates: Polycanvas; Standard cotton canvas or Hahnemühle Monet canvas
- Available in four finishes: rolled, stretched, classic/box frame or float framed
- Choice of three depths: 0.75" (19mm), 1½" (38mm) or 1¾" (44mm)
- Four canvas edge finishing options (black, white, image wrap, mirror wrap)
- 100+ year colour guarantee
- Professional artist stretcher bars milled from the finest quality European kilndried knotless pine
- Tensioning 'wedges' and finger joints
- Handmade by some of the UK's most experienced canvas framers

## CANVAS SUBSTRATES

Choose from three canvas materials:

- Polycanvas, 260gsm (PC)
- Standard Canvas, 400gsm (SC)
- Hahnemühle Monet Canvas, 410gsm (HMC)



### **POLYCANVAS (PC)**

260gsm. A matte, bright white, fine-textured 100% polyester inkjet canvas that is ideal for volume canvas art where only a subtle textured finish is required. Strong, yet easy to stretch and fold without cracking.

### **STANDARD CANVAS (SC)**

400gsm. Our standard canvas is a finely textured artist-grade cotton substrate which consistently reproduces image details with outstanding clarity and detail. Superior to many more expensive branded alternatives.

### **HAHNEMÜHLE MONET CANVAS, 410GSM (HMC)**

410gsm. A white, 100% cotton canvas meeting the highest standards regarding density, colour gamut, colour graduation and image sharpness. Perfect for digital art, black & white and colour photography as well as limited edition prints.

## CANVAS STRETCHER BARS

Choose from 19mm, 38mm or 44mm European knotless pine canvas frames (stretcher bars).

Each canvas frame is milled with a curved profile; minimising contact with the face of the canvas; preventing unsightly impression marks and surface cracking.

We use fingerjointed canvas frames which create corner tension helping resist warping. For larger sizes, we add wooden 'wedges' to each corner; ensuring the canvas surface remains taut and allowing easy restretching in future years.

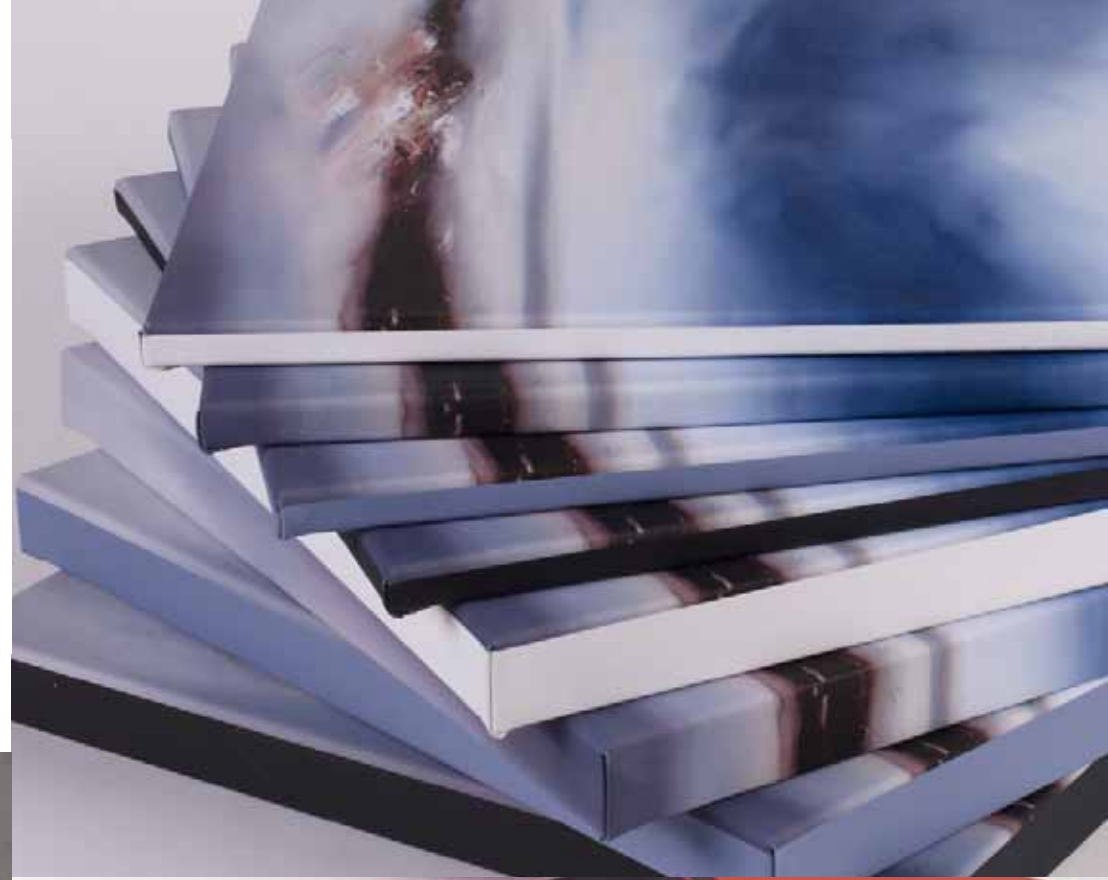




## CANVAS FINISHES

Canvas prints can be finished with a variety of profile edges:

- White edge
- Black edge
- Image wrap (the image is extended to wrap around the sides and back of the frame)
- Mirror wrap (the image edge is reflected on the sides; ideal if you need the entire image displayed on the front of the canvas)



## FRAMED CANVAS

Transform a standard canvas into a special work of art

### CLASSIC OR BOX FRAME

You can add our Classic or Box frames to any 19mm stretched canvas. Available in black, brown, white, natural, gold and silver finishes.

### FLOAT FRAME

Adding a solid wooden frame to our standard 38mm canvas creates a unique and original work of art. The thin frame sits approximately 5mm from the edge of the canvas helping create a floating border. Highly recommended for photography and images that make a real statement.

Float Frame:



Black



White



## MOUNTED

# Ideal for **contemporary display**

All our mounted prints offer a unique and compelling way to present your art and photography.

Choose from a stunning variety of different substrates, each offering something unique and with genuine visual impact.



## FOAM BOARD

Foam board, sometimes known as foam core, provides a lightweight and affordable mounting option

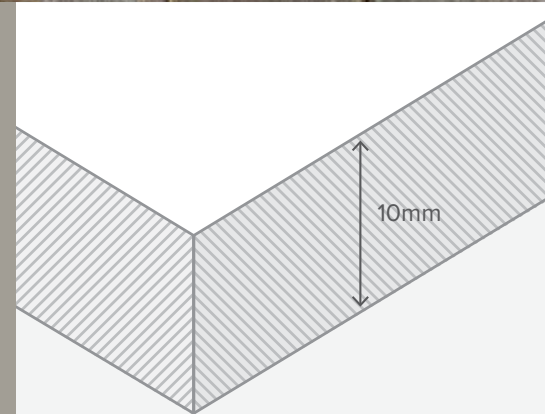
A 12 colour giclée print is sealed with a gloss or matt laminate and then mounted onto a 10mm polystyrene foam core board.

Foam board prints are extremely cost effective, providing a great alternative to Gatorboard.



### Foam board highlights

- Strong, rigid and amazingly lightweight
- Cost effective
- Professional finish
- Ready to hang
- Gloss, satin or matt surface laminate
- Available in a wide range of custom sizes up to 1m

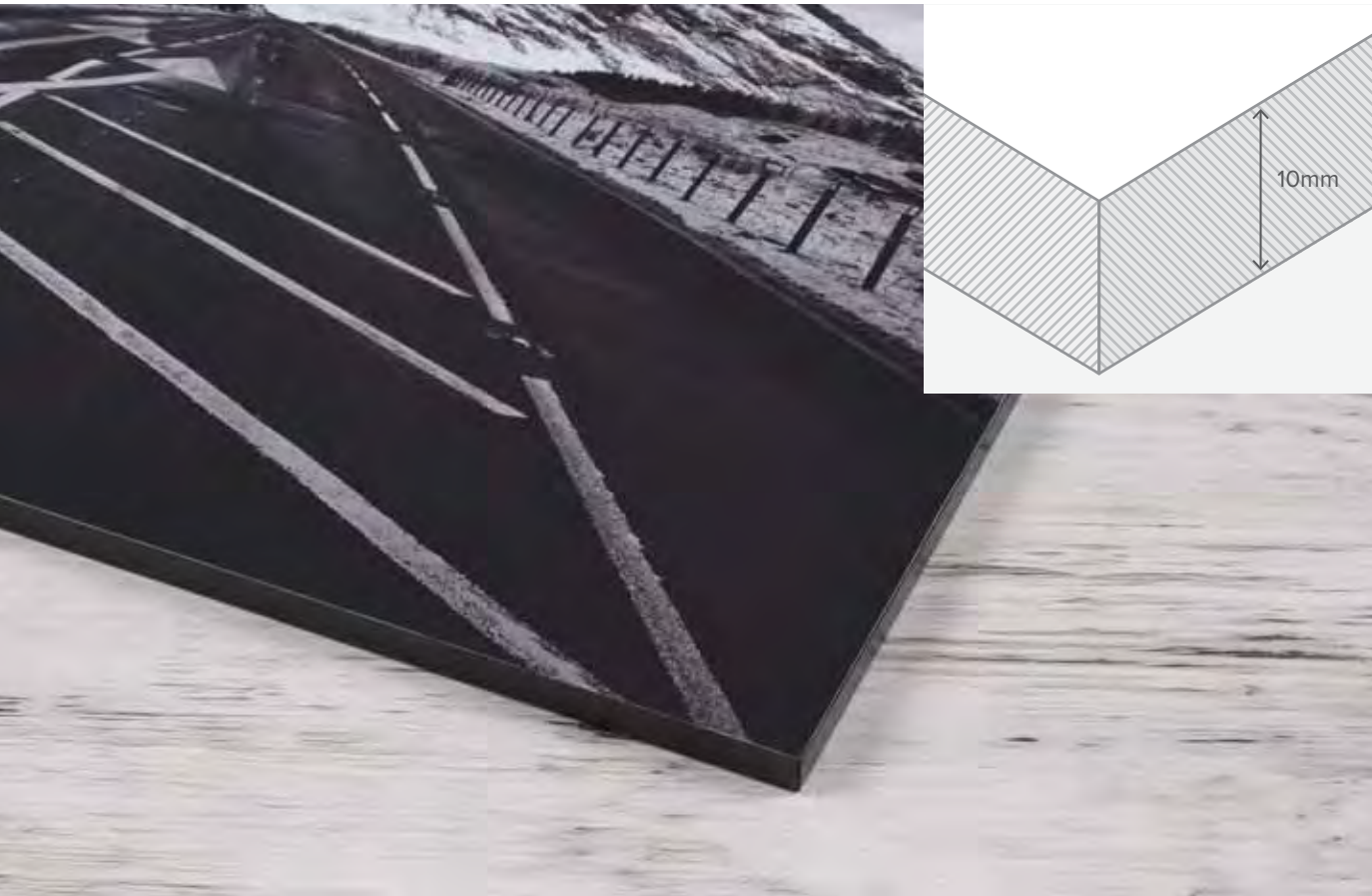


## GATORBOARD

Gatorboard is a special type of foam board which is exceptionally light and exceptionally strong. It provides a more refined, stronger alternative to foam board

A stunning fine art giclée print is mounted onto this popular water resistant, resin impregnated wood fibre substrate and sealed with a matt or gloss laminate.

Gatorboard prints are 10mm thick and come finished with smooth black edges and a special wall hanger.



### Gatorboard highlights

- Rigidity of wood prevents warping
- Lightweight making highly portable
- Wide range of sizes
- Full bleed borders
- Available in a wide range of custom sizes up to 1m
- Gloss, satin or matt surface laminate

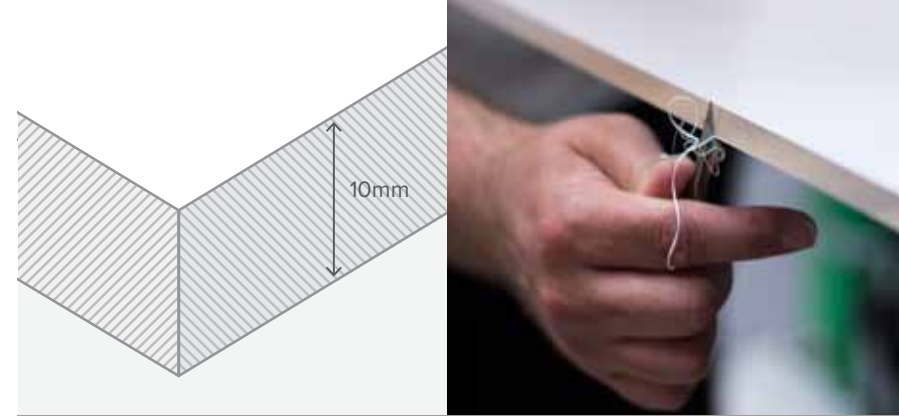


## FOAMEX

Foamex offers a subtle twist on standard foam substrates. The material is completely solid, providing an incredibly sturdy and robust surface

Perfect for displays and exhibitions, each foamex print comprises of a 12 colour giclée print mounted onto 10mm thick PVC board. Foamex prints are available on a black or white board.

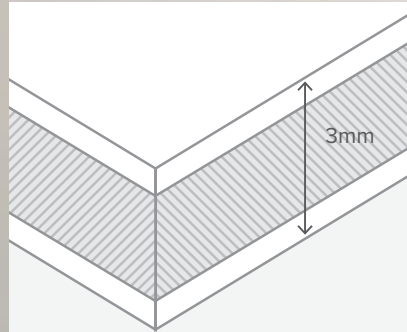
Each print comes ready to hang using a special subframe hanging system.



### Foamex highlights

- Solid, rigid foam board
- Professional, high-quality finish
- Bow and warp resistant
- Delivered ready for hanging
- Available in sizes ranging from 10"x8" to 44"x32"
- Gloss, satin or matt surface laminate





### Dibond highlights

- Perfect for photographic exhibitions
- Lightweight, strong and minimal
- Matt and gloss laminate finishes
- Gloss, satin or matt surface laminate

## DIBOND

Dibond is 3mm deep and comprises of a dense polythene core sandwiched between two thin aluminium sheets. It is a lightweight alternative to aluminium and perfectly suited to large format prints

The laminated finish provides a timeless quality making dibond a wonderfully minimalist option for displaying your art and photographs.

Each dibond print comes with a hidden subframe hanging system, floating your artwork 15mm from the wall.





## ACRYLIC

# Crystal clear pictures with **stunning impact**

Our acrylic prints combine precision engineering with highly skilled handmade finishing.

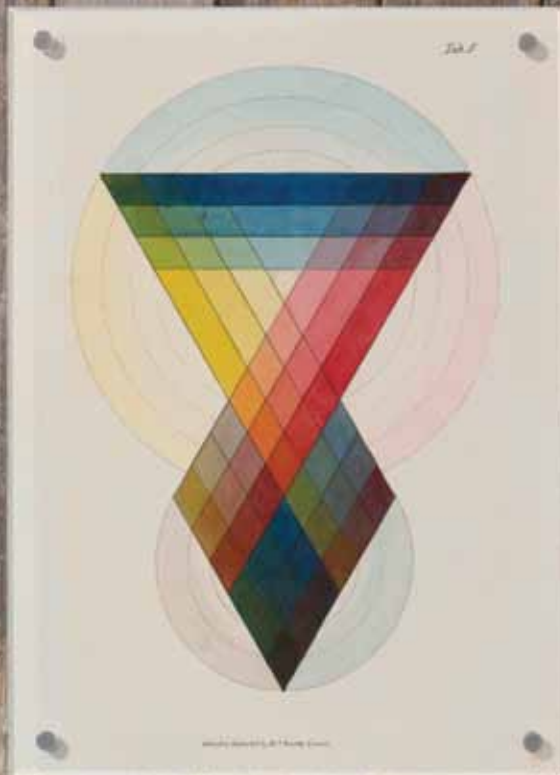


## ACRYLIC PANELS

Our acrylic panels transform your photographs into captivating works of art with amazing clarity and depth

A 12 colour fine art giclée print is hand mounted onto 10mm thick high-gloss acrylic perspex and finished with your choice of metal corner bolts (in either chrome, satin, black or gold) or backed by an invisible floating subframe.

Acrylic prints are durable, water resistant and will protect your pictures from harmful UV light keeping colours fresh and vivid for years to come.



### Acrylic highlights

- Crystal clear, diamond polished edges
- Stunning, luminous colours with brilliant depth
- Fade resistant for 100+ years
- Modern, contemporary look
- Available in a wide range of custom sizes up to 1.2m



## ACRYLIC PRISM

Crystal-clear, hand-polished acrylic, with a high-quality backmounted print. The 1" thick acrylic prism creates a dramatic focal point for any desk, shelf or mantelpiece

The acrylic prism makes an ideal gift, letting you display portraits and family photographs in a contemporary style without the need for a picture frame.



### Acrylic prism highlights

- Thick, robust acrylic protects your photos
- Solid, diamond polished edges help display images from any angle
- Perfect for a desk, bookcase or window sill
- Available in square and rectangular formats
- Sizes range from 6" x 4" to 8" x 8"

WOODEN

**Solid and robust**  
with perfect edges

Hardwearing, natural prints with your choice of laminated finishes.



## WOOD PANELS

Our wood panels provide a striking alternative to traditional mounted prints

A fine art print is bonded to a solid 18mm MDF panel with a matt black edge. The substrate is solid, perfectly flat and extremely rigid. Perfect for displays or exhibitions, each wood panel comes ready-to-hang with a split baton back floating the print 10mm from your wall.



### Wood panel highlights

- Sharp, clean cut edges
- Flat, smooth, perfect finish
- Black edges
- Invisible float mount
- Gloss or matt laminate finish
- Available in a wide range of custom sizes up to 1m
- Gloss, satin or matt surface laminate



### Art Box highlights

- Sharp edges with clean crisp lines
- Solid, durable and robust
- Unique mounted printed offering
- A compelling alternative to canvas
- Available in a wide range of custom sizes up to 1m



## ART BOX

The Art Box combines all the best aspects of a stretched canvas print with the durability of a conventional wooden block print

A stunning fine art giclée print is mounted onto a three -dimensional wooden block and then surface sealed with a wipe-clean laminate. Unlike canvas, the side profile and corners of the print are a perfect, creating a seamless, crisp edge.







## DESKTOP BLOCKS

Desktop blocks are ideal for displaying modern photographs without the need for a traditional picture frame

Each print is mounted to a 1" thick MDF block and finished with black or white sides and a gloss or matt laminate finish.

Makes a cost effective alternative to the acrylic prism.

### Desktop blocks highlights

- Solid, affordable
- Perfect edges with clean crisp lines
- Picture frame replacement for desk or mantelpiece
- Available in a wide range of custom sizes up to 1m
- Gloss, satin or matt surface laminate

“

I can't tell you how completely impressed I am with your level of service and commitment. Your products are great quality and I am already planning what other pictures to order.”

G Lloyd



## MERCHANDISE

Perfect for  
**gifting**

Our merchandise collection offers our most popular products at the most compelling prices.



## MAGNETS

Each fridge magnet is made from a high-quality print sealed onto a power magnetic substrate

Available in 6"x6" (15cm x 15cm) square format, the magnets may feature a single photo or a montage of up to 9 images. Extremely popular with Instagram and photo app users.



### Magnet highlights

- A powerful magnet substrate that actually sticks!
- Single or multiple images
- Popular with photo apps
- Ideal gift for any occasion
- Available in 6" x 6" (15cm x 15cm) square



## MINI PRINTS

Mini prints provide a simple way to showcase your collection for retail

Measuring 11" x 14" (28cm x 35cm), mini prints are a perennially popular size and format for presenting your image collection.



### Mini print highlights

- Mounted, unmounted or with extra thick mount
- Supplied with backing board and cellophane bag ready for resale
- No minimum order quantity
- Available as print-only, window mounted and framed



## DESKTOP BLOCKS

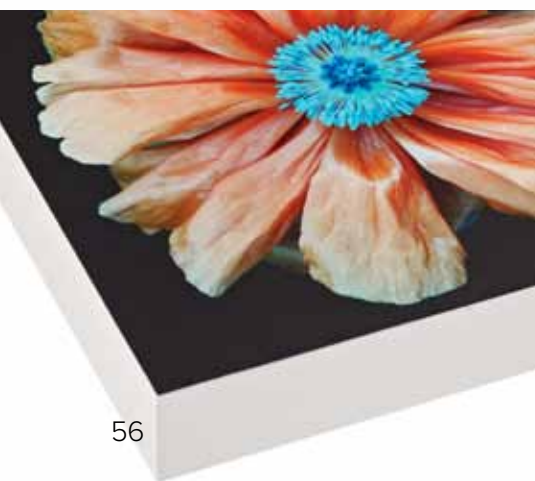
Desktop blocks are ideal for displaying modern photographs without the need for a traditional picture frame

Each print is mounted to a 1 inch thick MDF block and finished with black or white sides and a gloss or matt laminate finish.

Makes a cost effective alternative to the acrylic prism.

### Desktop blocks highlights

- Solid, affordable
- Perfect edges with clean crisp lines
- Picture frame replacement for desk or mantelpiece
- Gloss, satin or matt surface laminate
- Available in 6" x 6" (15cm x 15cm) square



## ACRYLIC PRISM

Crystal-clear, handpolished acrylic, with a high-quality backmounted print. The 1 inch thick acrylic prism creates a dramatic focal point for any desk, shelf or mantelpiece

The acrylic prism makes an ideal gift, letting you display portraits and family photographs in a contemporary style without the need for a picture frame.



### Acrylic prism highlights

- Thick, robust acrylic protects your photos
- Solid, diamond polished edges help display images from any angle
- Perfect for a desk, bookcase or window sill
- Available in square and rectangular formats
- Sizes range from 6" x 4" (15cm x 10cm) to 8" x 8" (20cm x 20cm)







**t** 0207 359 3965

**e** [info@gingerwhite.co.uk](mailto:info@gingerwhite.co.uk)

**w** [www.gingerwhite.co.uk](http://www.gingerwhite.co.uk)

**a** 353 Roman Road, Bethnal Green, London, E3 5QR