



ORLY® GELFX®
BUILDER TIPS GUIDE
APPLICATION

WHAT'S IN THE KIT?



IT ALL STARTED WITH INNOVATION.

ORLY® GELFX® Builder In A Bottle® is the original soak-off sculpting gel for nail extensions. Applies like a soft gel, wears like a hard gel, & soaks-off when ready to remove. First of its kind, this effortless, all-in-one, brush-on builder application offers flawless, longer, more natural looking nails.



1 Builder In A Bottle Crystal Clear

Pairing the enhanced flexibility of our unique soft-gel tips with the power of the Builder in a Bottle offers a one of a kind soft-gel manicure experience.

- Unbeatable strength, durability & clarity
- Soak-off formula
- Designed with ease of application in mind



② ORLY GELFX Nail Dehydrator

The ORLY GELFX Nail Dehydrator is designed to cleanse the nail plate of any and all residue left over from your nail prep, leaving you with the perfect canvas for your Builder Tip application.

- Removes dust & natural oil from the nail plate.
- Convenient brush-on application with precision brush to target nail surface
- Unique blend of solvents to temporarily remove surface oils & evaporate moisture to ensure proper dehydration.

③ ORLY GELFX Liquid Etch Primer

Think of Liquid Etch Primer as your double-sided sticky tape! This acid-free primer is designed to create a strong bond between the natural nail & your Builder Tips.

- Removes the need to e-file or roughen the Builder Tip manually.
- Acid-free. 2-1 Primer: Also works as high performance natural nail primer
- A unique blend of quick dry solvents, building oligomers & monomers to create texture on soft-gel tips while creating covalent bonds between the natural nail plate & enhancement.

④ ORLY GELFX Topcoat

GELFX Top Coat is designed to provide the glossiest finish & durable protection for your GELFX color, extensions & overlays.

- Unbeatable, high-shine finish
- Seals & protects your GELFX color & enhancements
- Cures with an inhibition layer

⑤ ORLY Buffer/File Duo

The only tool you'll need with a 180 grit buffer for prepping & smoothing on one side & a 100 grit file for efficient shaping on the other.

- Ergonomically designed to reach difficult areas with its unique contour shape.
- 180 Grit Buffer / 100 Grit File



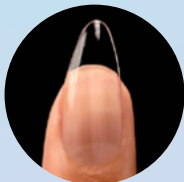
PRO TIP

To increase adhesion between your natural nail and Builder Tips, our pros suggest applying a thin layer of GELFX Basecoat and curing 30 seconds before applying your Builder Tip. This increases flexibility and durability for longer lengths and heavy-handed clients.

⑥ BUILDER TIPS

We've raised the bar by creating soft gel tips that match the unparalleled flexibility of Builder in a Bottle, for maximum durability.

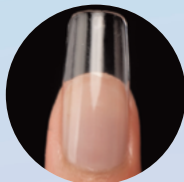
SHAPES & LENGTHS



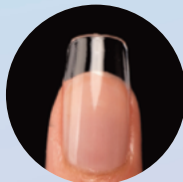
Almond Medium



Almond Short



Square Medium

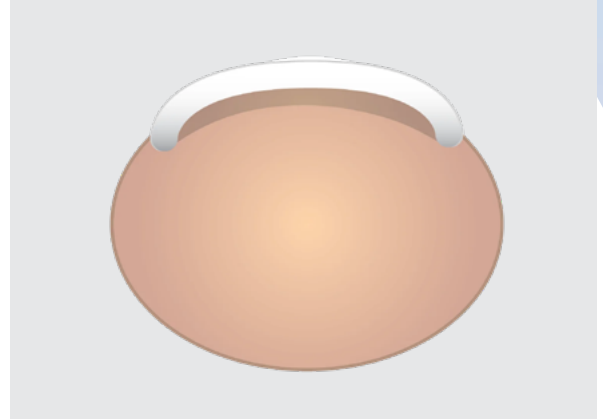


Square Short



THE PERFECT CLIENT

Builder Tips are designed to create natural-looking, lightweight nail enhancements with the durability needed to withstand the pressures of an everyday, mindful lifestyle. An average c-curve is the optimal nail type for our Builder Tip application protocol. For best results, please see our troubleshooting guide for suggested techniques to accommodate other nail types & conditions.



C-CURVE

US VS. THEM

- Our pure soft-gel Builder Tips are designed to match the flexibility you know and love from Builder In A Bottle for tips that move with your natural nails instead of against them, resulting in a longer lasting manicure.
- The Builder Tips system reinforces your tip application with the strength, durability and clarity of the original Builder In A Bottle for unmatched wearability.
- The combination of our specially formulated Builder Tips & Builder In A Bottle result in a more natural looking & feeling, lightweight nail extension.



HOW TO APPLY **BUILDER TIPS**



1. NAIL PREP



1.1 After finishing your ORLY prep protocol, gently roughen the surface of the nails with the buffer side of your Buffer File Duo (or ORLY Black Board)



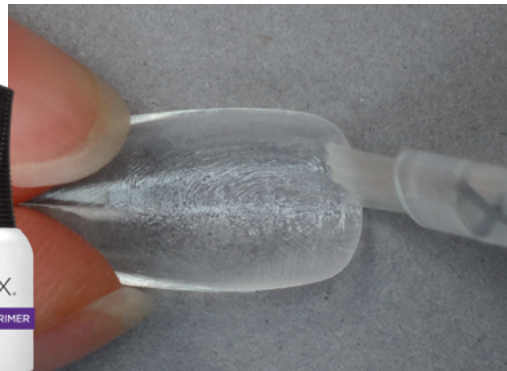
1.2 Finish by cleansing with a lint-free wipe and 99% alcohol (or the ORLY 3-In-1 Cleanser)

▶ [WATCH VIDEO ON HOW TO PREP NAILS USING THE ORLY PREP PROTOCOL](#)

2. SIZING TIPS & PREP



2.1 Size your gel tips to meet sidewall to sidewall on each nail. If the nail is in between sizes, size up and gently file the sides to get the perfect fit & use a dry lint free wipe to dust away debris.

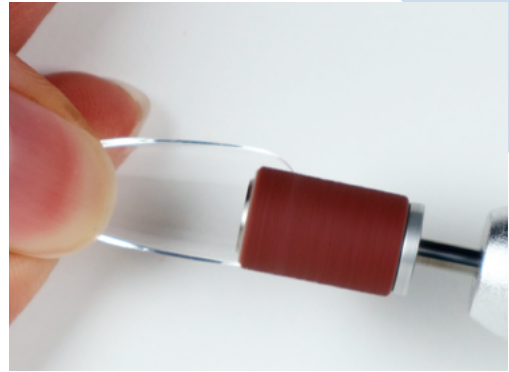


2.2 For maximum adhesion, etch the underside of the Builder Tip by scrubbing with Liquid Etch primer in circular motions for 20-30 seconds from the base/sides and halfway towards the tip until you see circular etchings.

▶ [WATCH VIDEO ON PROPER SIZING](#)

CONTINUED

ALTERNATIVE OPTIONS



Use the file side of the ORLY Buffer File Duo OR use an e-file with a medium grit sanding band to manually etch the Builder Tip.

3. DEHYDRATE & PRIME



3.1 Apply a thin layer of Dehydrator over the entire nail plate, making sure it's completely dry before moving to the next step.



3.2 Apply a thin layer of Liquid Etch Primer down the nail plate.



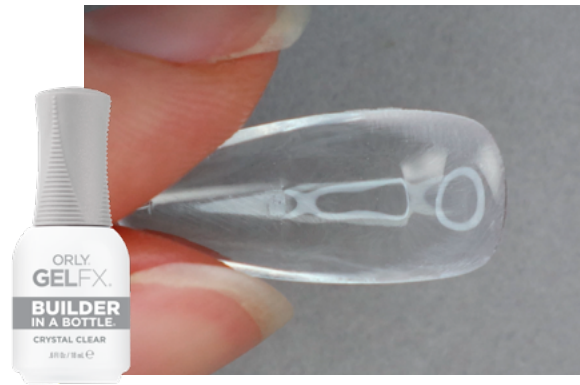
PRO TIP

For enhanced adhesion (not included in kit):
Apply a thin layer of your GELFX Basecoat to all 10 nails & cure for 30 seconds.

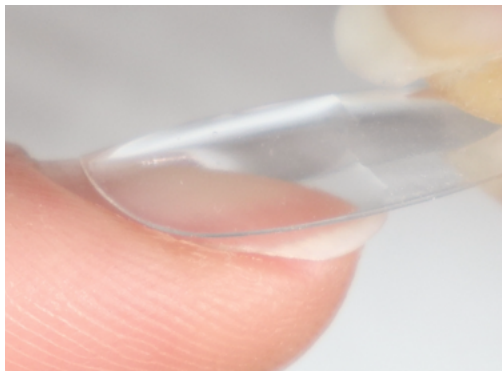
4. APPLY BUILDER TIPS



4.1 Apply a very thin layer of Builder In A Bottle on the etched area of the gel tip. This layer will act as a guide for where the rest of the product will flow to.



4.2 Add an extra small bead of Builder to the base of the Builder Tip. Just enough to cover the nail plate as you apply the tip, but not too much that it will overflow. This will vary based on nail size.



4.3 Holding the tip at a 45 degree angle, line up the tip 1-2 mm down from the base of the nail and gently tilt it down until the bead of Builder covers the entire nail plate.



4.4 To secure the tip into place, flash cure for 5-10 seconds. Repeat on one full hand and once all tips are secured, cure for a full 30 seconds in your LED 900FX Lamp.

[▶ WATCH VIDEO ON BUILDER TIP APPLICATION](#)

5. BLEND & SHAPE



5.1 Blend the tip flush to the natural nail by gently filing the base and sides of the tip edges at a parallel angle to the nail. Always file with rounded, downward motions to avoid hitting the skin around the nail. Shape the tip as needed.

▶ [WATCH VIDEO ON BLENDING THE BUILDER TIP](#)



5.2 Buff the surface of the Builder Tip with the buffer side of the Buffer File Duo (or ORLY Black Board) to create micro-scratches. This maximizes adhesion by creating micro scratches on the surface of the Builder Tip, giving Builder in a Bottle the ideal texture to grip on to. Cleanse away debris with a lint-free wipe and 99% alcohol.

6. REINFORCE & FINISH



6.1 Apply a thin layer of Builder in a Bottle to the full nail and surface of the Builder Tip for a seamless blend. Add a small bead of Builder at the base to reinforce the gap between the Builder Tip and the natural nail. Allow it to self-level and cure for 30 seconds in your LED 900FX Lamp.



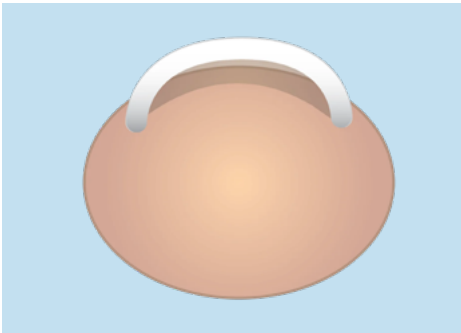
6.2 Continue on to your GELFX Color coat or Topcoat application.

▶ [WATCH VIDEO ON GELFX COLOR COAT APPLICATION](#)

TROUBLE SHOOTING

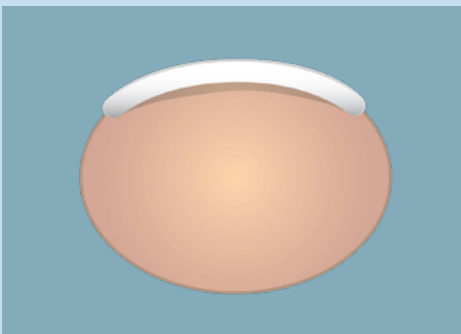
It's important to keep in mind our natural nail shape, length, strength and even our lifestyles have a big impact on how and what products work best on our nails. That means Builder Tips may not work the same for everyone, and that's okay! For the best results, we recommend these technique alterations and/or alternative products for the following nail conditions.

PRONOUNCED C-CURVE



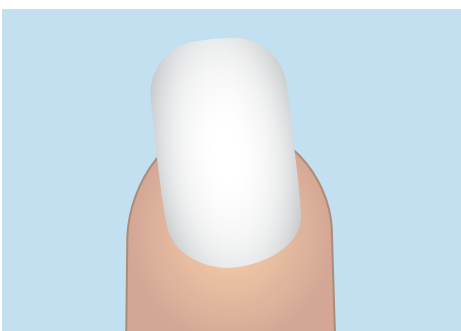
- Nails with a pronounced apex or c-curves will work best with a cured layer of Builder on the nail plate before applying your Builder Tip. This is because the curve or apex of the Builder Tip will be too flat for more pronounced curves which causes extra pressure pulling the Builder Tip away from the natural nail when cured. After prepping, dehydrating and priming the nail plate, apply a thin layer of GELFX Basecoat to all nails and cure for 30 seconds. Then apply a thin layer of Builder In A Bottle to each nail. Allow the Builder to settle for 10-15 seconds and cure for a full 30 seconds before continuing on to your Builder Tip application.

FLAT C-CURVE & APEX



- Flat c-curves will work best with a cured layer of Builder on the nail plate before applying your Builder Tip. This is because the curve of the Builder Tip will be too severe for flatter nails which causes extra pressure pushing the Builder Tip into the natural nail when cured. After prepping, dehydrating and priming the nail plate, apply a thin layer of GELFX Basecoat to all nails and cure for 30 seconds. Then apply a thin layer of Builder In A Bottle to each nail. Turn the hand over and allow Builder to settle into the natural apex of the nail. Flip back over and immediately cure for a full 30 seconds before continuing on to your Builder Tip application.

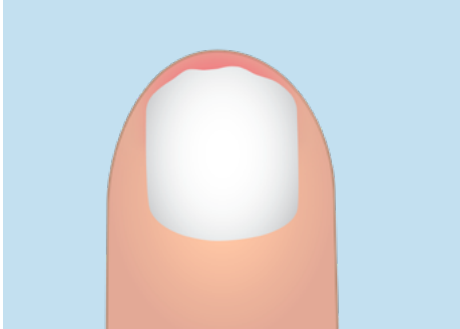
CROOKED NAILS



- Crooked nails can be challenging when working with preshaped soft-gel tips. Find the tip size that fits best. When applying the Builder Tip, be sure to align the tip with the center of the first knuckle rather than the angle of the natural nail growth.

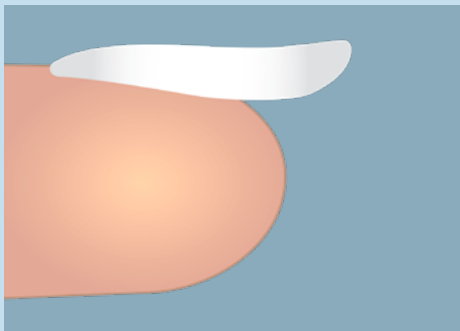
TROUBLE SHOOTING

BITTEN NAILS



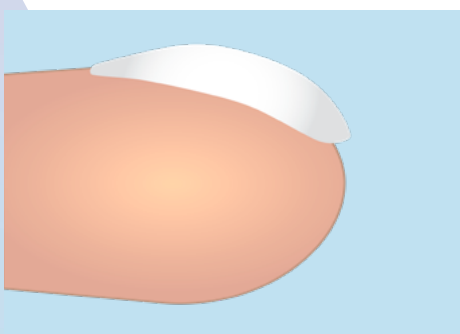
- Bitten nails are tricky because they lack the necessary nail plate length to properly support a soft-gel tip. In order to prevent getting Builder on the skin at the tip of the finger and to ensure the structure of the nail is customized to support the desired length, swap out our Builder Tips for our Perfect Fit Forms. Sculpting with Builder in a Bottle on our Perfect Fit Forms allows you to have complete control over the shape, curve, length, & thickness of your extension.

SKI SLOPE NAILS



- Ski slope nails come in moderate to severe variations. For a moderate ski slope nail, after prepping, dehydrating and priming the nail plate, apply a thin layer of GELFX Basecoat to all nails and cure for 30 seconds. Then apply a layer of Builder to each nail. Allow the Builder to settle into the slope, leveling it out and cure for a full 30 seconds before continuing on to your Builder Tip application.
- For a severe ski slope nail, swap your Builder Tips out for our Perfect Fit Forms. Sculpting with Builder in a Bottle on our Perfect Fit Forms allows you to have complete control over the shape, curve, length, & thickness of your extension for easy correction.

CLUBBED NAILS



- Creating a proper structure for your nail enhancement is the key to extending clubbed nails. Keep clubbed nails short and swap your Builder Tips out for our Perfect Fit Forms. Sculpting with Builder in a Bottle on our Perfect Fit Forms allows you to have complete control over the shape, curve, length, & thickness of your extension for easy correction focusing on building the perfect apex.

APPLICATION

TROUBLESHOOTING



SPILLAGE / EXCESS GEL

If you see Builder spilling out onto the cuticle area during application, be very mindful of the angle in which you're applying your Builder Tip. Hold the tip at a 45 degree angle and slowly tilt down while keeping the pressure secure at the base of the tip. This will push all of the gel up towards the tip of the natural nail. If you see Builder spilling out on the sidewalls or past the tip of the natural nail, you're using a little too much Builder to apply your tip. Remove the nail before curing, wipe away excess product and reapply using a smaller bead of Builder on the Builder Tip.

BUBBLES

If you see bubbles when applying your Builder Tip, you've underestimated the amount of Builder needed in the well of your tip! Air pockets are created when there's not enough Builder to fill up the space between your natural nail and your Builder Tip. Remove the nail and add a little extra Builder to the well of the tip before reapplying.

WEARABILITY

TROUBLESHOOTING

If your Builder Tips are not lasting the intended 2-3 week wear-time, here are some solutions for soft-gel tip manicure issues.

- **TIPS POPPING OFF?**

If your soft-gel tip enhancement is popping off completely from the natural nail, we recommend curing a thin layer of GELFX Basecoat on all nails for 30 seconds before applying your Builder Tips. This increases the adhesion between your nail and the enhancement. If you notice your soft-gel tip is popping off and leaving behind the cured layer of Builder In A Bottle on the natural nail, it's time to increase adhesion between your Builder Tip and your Builder In A Bottle layer. It's important to take your time priming the underside of your Builder Tip with Liquid Etch to create visible texture for Builder In A Bottle to adhere to. Alternatively, swap Liquid Etch for a manual or e-file etching to ensure the Builder Tip is textured for optimal adhesion.

- **COLOR COAT PEELING OFF YOUR ENHANCEMENT?**

If your color coat is peeling off your soft-gel tip enhancement, we need to increase adhesion between the Builder Tip & your finishing layers. After applying your Builder Tip, it's important to take your time priming the surface of the tip with Liquid Etch to create visible texture for your finishing layers to adhere to. Alternatively, swap Liquid Etch for a manual or e-file etching to ensure the Builder Tip is textured for optimal adhesion.

- **TROUBLE WITH LIFTING?**

If you notice your Builder Tip enhancements are lifting before their next appointment, there's a few things to note. Nail enhancement products are designed with different lengths, strengths & applied pressures in mind. Builder Tips are designed to withstand pressures of an everyday, mindful lifestyle at medium lengths. Heavy handed clients and longer lengths may need alternative enhancement products like hard gel or acrylics to withstand the excessive pressure. You can also try a new shape or shorten the tip length until you find the sweet spot that works for your client's lifestyle.

EXTEND WITH BUILDER



Extend to great lengths or create natural-looking beauties with Perfect Fit Forms.

Take control and create completely customizable extension lengths & shapes for particular clients, correcting nail conditions or get creative with avant garde looks.



Fast Forms allow you to create short to medium length pure Builder In A Bottle gel extensions with the quickest application time.

Create natural-looking enhancements in no time with the maximum durability of a pure Builder in a Bottle extension for heavier handed clients.

CONTACT ORLY.

[ORLY+](#) | [Instagram](#) | [ORLY+ Shop](#)
Email: plus@orlybeauty.com

Sales [US & Canada](#) | [International](#)