

Air Monitor

User Manual

Thank you for choosing Qingping Air Monitor.

Charging

Please charge the product with a USB power adapter that supports 5V \equiv 1A or higher current.

You can keep the power adapter connected.

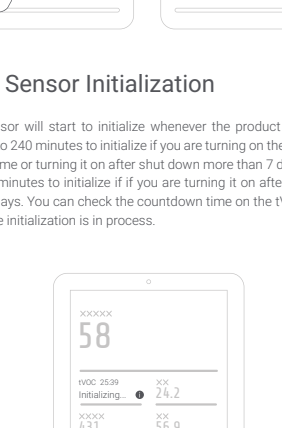
Power On

When product is turned off, long press the button on the top to turn it on.

If the product does not respond, please charge it first.

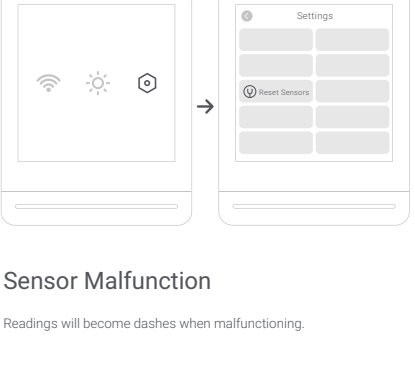
Change Screen

Swipe the screen left or right to change the main page.



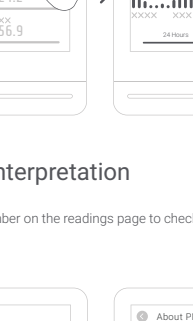
Readings

When you are on the readings page, there are readings with different font sizes. Tap any of them to make it show on the top.



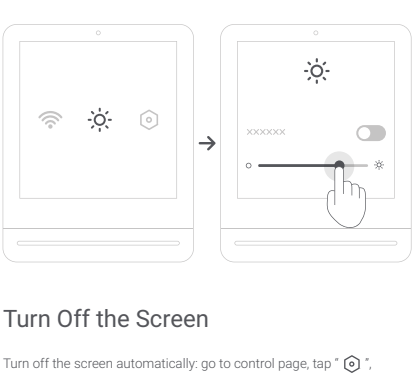
tVOC Sensor Initialization

tVOC sensor will start to initialize whenever the product turns on. It takes up to 240 minutes to initialize if you are turning on the product for the first time or turning it on after shut down more than 7 days; It takes up to 12 minutes to initialize if you are turning it on after shut down within 7 days. You can check the countdown time on the tVOC reading spot while initialization is in process.



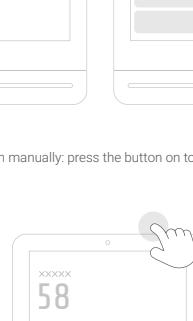
Reset Sensors

If tVOC or CO2 reading is abnormal, you can go to , choose "Reset Sensors". Follow the instructions on the device to proceed.



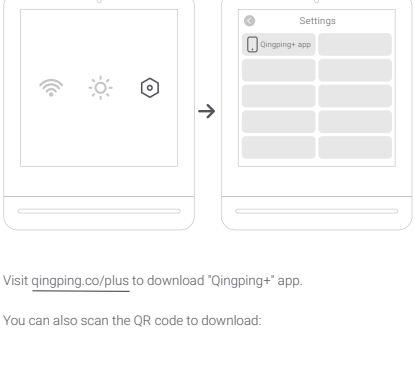
Sensor Malfunction

Readings will become dashes when malfunctioning.



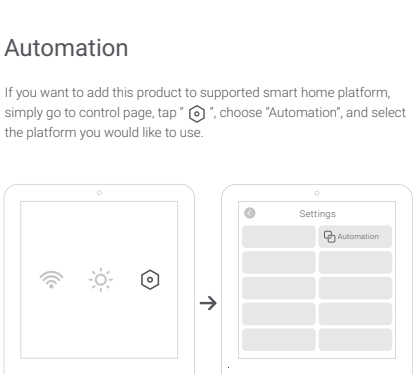
Historical Data

Tap button on the up right to check historical data of this reading when you are on the readings page.



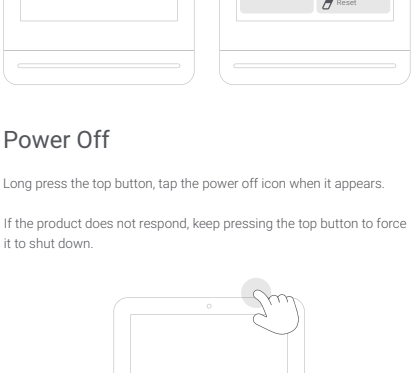
Reading Interpretation

Tap the large number on the readings page to check the reading's interpretation.



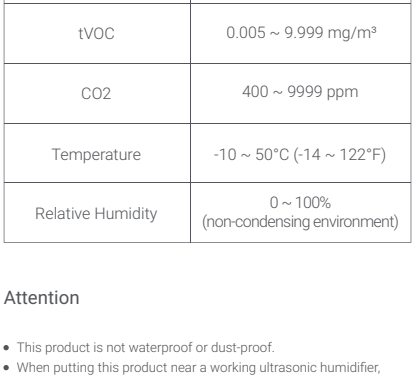
Screen Brightness

Screen brightness is set to auto-adjust by default. If you need to adjust it manually, go to control page and tap , turn off "Auto", and slide left or right to adjust the brightness.

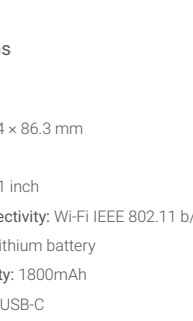


Turn Off the Screen

Turn off the screen automatically: go to control page, tap , choose "Screen", and turn on the function or adjust the activation time period.



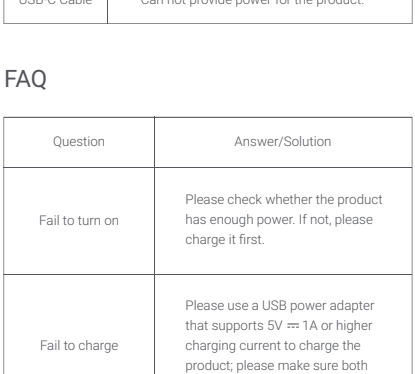
Turn off the screen manually: press the button on top of the product.



Connect to Qingping+ App

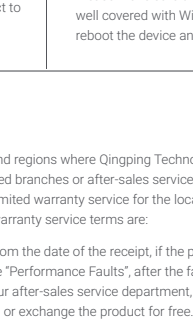
Go to control page, tap , choose "Qingping+ app", follow the instruction on the screen to proceed.

You check the product readings, and share it with your friends or family.



Visit qingping.co/plus to download "Qingping+" app.

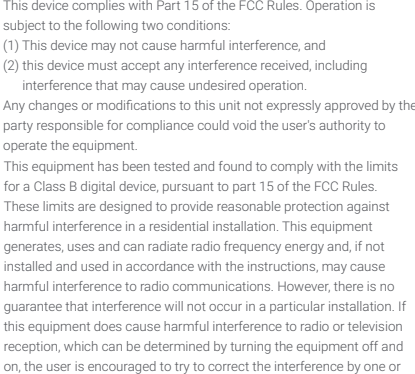
You can also scan the QR code to download:



Or search "Qingping+" on App Store or Google Play.

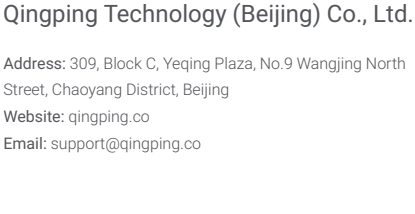
Automation

If you want to add this product to supported smart home platform, simply go to control page, tap , choose "Automation", and select the platform you would like to use.



Reset

Go to control page, tap , choose "Reset", and follow the instructions to proceed.



Power Off

Long press the top button, tap the power off icon when it appears.

If the product does not respond, keep pressing the top button to force it to shut down.

Sensor Type & Operating Range

Sensor Type	Operating Range
PM2.5	0 ~ 999 $\mu\text{g}/\text{m}^3$
tVOC	0.005 ~ 9.999 mg/m^3
CO2	400 ~ 9999 ppm
Temperature	-10 ~ 50°C (-14 ~ 122°F)
Relative Humidity	0 ~ 100% (non-condensing environment)

Attention

- This product is not waterproof or dust-proof.
- When putting this product near a working ultrasonic humidifier, PM2.5 reading may become abnormally high. (Ultrasonic humidifier is the one with white mist while operating.)
- Do not throw the battery or the product with the battery into the fire to avoid an explosion.
- Do not disassemble the product by yourself to avoid injury.

Specifications

- Model: CGS1
- Size: 185 x 68.4 x 86.3 mm
- Weight: 217 g
- Screen Size: 3.1 inch
- Wireless Connectivity: Wi-Fi IEEE 802.11 b/g/n 2.4GHz
- Battery Type: Lithium battery
- Battery Capacity: 1800mAh
- Charging Port: USB-C
- Output: 5V \equiv 1A
- FCC ID: 2A43F-CGS1

Performance Faults

Parts	Problem
Main Product	Product can not be turned on.
	Product can not be charged.
	Screen does not respond to swipe or tap.
	Can not connect to Wi-Fi.
	Sensor does not work normally.
USB-C Cable	Can not provide power for the product.

FAQ

Question	Answer/Solution
Fail to turn on	Please check whether the product has enough power. If not, please charge it first.
Fail to charge	Please use a USB power adapter that supports 5V \equiv 1A or higher charging current to charge the product; please make sure both ends are connected correctly.
Fail to obtain weather information	Please make sure the product is connected with Wi-Fi; please make sure the connected Wi-Fi has normal Internet connection.
Fail to connect to Wi-Fi	Please make sure the product is well covered with Wi-Fi signal; reboot the device and try again.

Warranty

In the countries and regions where Qingping Technology (Beijing) Co., Ltd. has established branches or after-sales service centers, we provide a 1-year limited warranty service for the locally sold Qingping Air Monitor. The warranty service terms are:

1. Within 7 days from the date of the receipt, if the product has faults that listed in the "Performance Faults", after the faults are confirmed by our after-sales service department, the customer can have the refund or exchange the product for free.
2. From the 8th to the 15th day after the receipt, if the product has faults that listed in the "Performance Faults", after the faults are confirmed by our after-sales service department, the customer can have a replacement or repair service for free.
3. Within 12 months from the date of receipt, if the product has faults that listed in the "Performance Faults", after the faults are confirmed by our after-sales service department, the customer can have the maintenance service for free.

Non-warranty

1. Unauthorized repair, misuse, collision, negligence, abuse, liquid injection, accident, alteration, improper use of accessories not originally supplied with this product.
2. The warranty period has expired.
3. Damage caused by force majeure.
4. The situation does not meet the fault listed in the Performance Faults.

FCC Warning

This device complies with Part 15 of the FCC Rules. Operation is subject to the following two conditions:
 (1) This device may not cause harmful interference, and
 (2) this device must accept any interference received, including interference that may cause undesired operation.
 Any changes or modifications to this unit not expressly approved by the party responsible for compliance could void the user's authority to operate the equipment.

This equipment has been tested and found to comply with the limits for a Class B digital device, pursuant to part 15 of the FCC Rules. These limits are designed to provide reasonable protection against harmful interference in a residential installation. This equipment generates, uses and can radiate radio frequency energy and, if not installed and used in accordance with the instructions, may cause harmful interference to radio communications. However, there is no guarantee that interference will not occur in a particular installation. If this equipment does cause harmful interference to radio or television reception, which can be determined by turning the equipment off and on, the user is encouraged to try to correct the interference by one or more of the following measures:

- 1) Reorient or relocate the receiving antenna.
- 2) Increase the separation between the equipment and receiver.
- 3) Connect the equipment into an outlet on a circuit different from that to which the receiver is connected.
- 4) Consult the dealer or an experienced radio/TV technician for help.

Qingping Technology (Beijing) Co., Ltd.

Address: 309, Block C, Yeqing Plaza, No.9 Wangjing North Street, Chaoyang District, Beijing

Website: qingping.co

Email: support@qingping.co