



MARS
PURIFIER



GENERATION X

INSTALLATION



Table of Contents

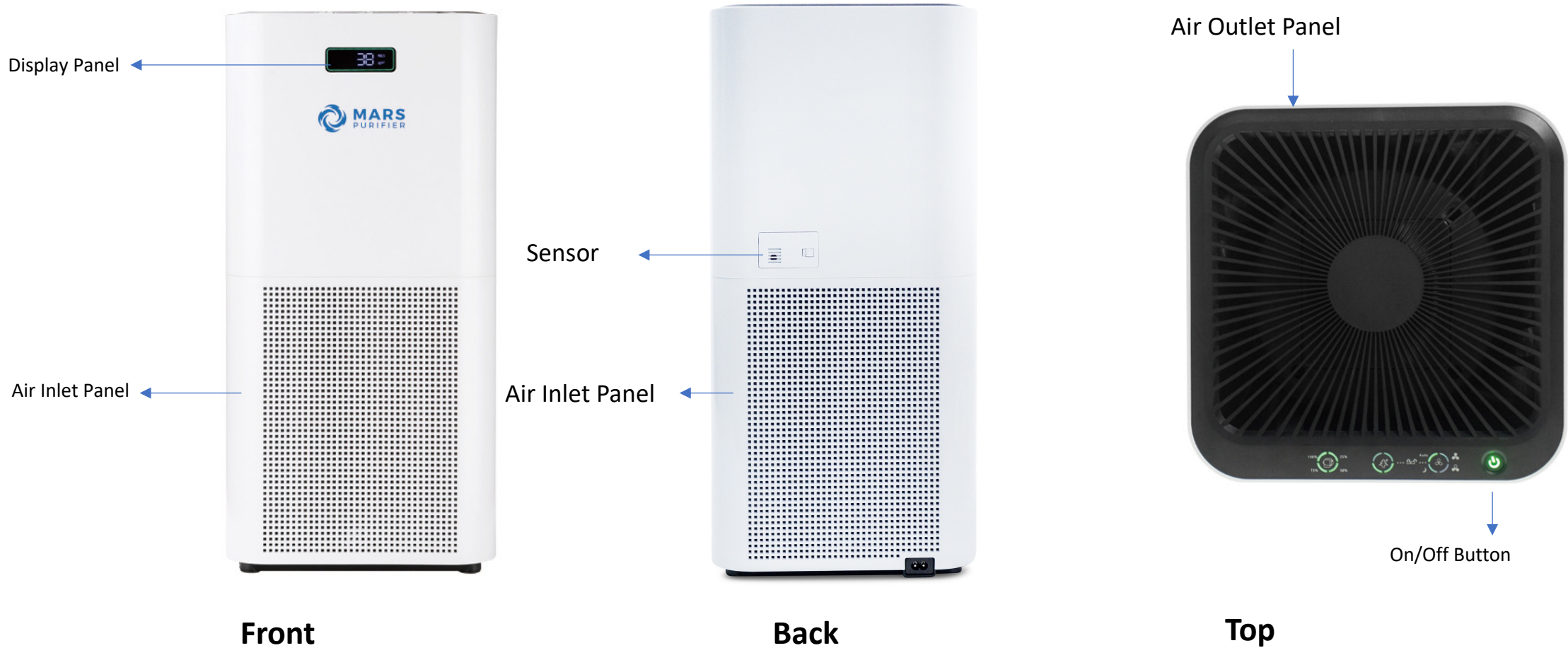
Equipment package contents	3
Name of each part	4
Specification	5
CADR Performance to ISO14644 m3/hr	6
Filter setup before use	7
Install filter	8
Setup	9
Function	10
Dust sensor	11
Sensor Cleaning	12
Filter cleaning	13
Filter replacement	14
Smart phone connection	15
Safety precautions	18
FAQ	19
Warranty	20

✓ Equipment package contents

- 1 air purifier
- 1 adapter
- 1 user manual



✓ Name of Each Part





Specification

Model	Generation X
CADR	720m3/hr
Coverage	144m2
Noise (dB(A))	<56db
Power (W)	26W (or 46W)
Voltage	220V/50Hz
Product dimension	590x280x276mm
Package Dimension	625x340x330mm
Net/ Gross weight	6.35kg/7.55kg



CADR Performance to ISO14644 m3/hr

Speed	1	2	3
Generation X	271	455	727



Noise Decibel Volume

Speed	1	2	3
Generation X (dB)	18	29	56



Power W

Speed	1	2	3
Generation X	6	15	46



Before Use - Filter removal

1. Open the Filter cover

When changing the filter, place the purifier upside down, use a stack of cloths to ensure it doesn't get damaged



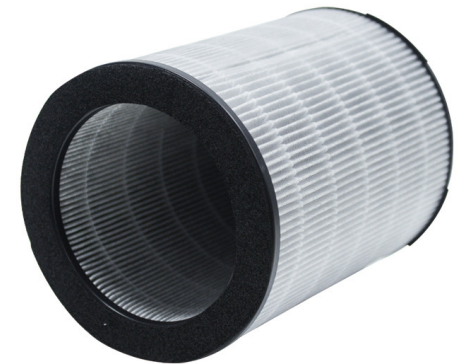
2. Rotate counter clockwise to release the filter and unlock it (fig.2)



3. Unlock the filter

Take out the filter and cut open the plastic bag.

Ensure there is no plastic remains around the purifier



✓ Install filter

4. Install the filter

Take out the filter, gently put it into the purifier, adjust the position and lay it flat



5. Locking the filter

Rotate clockwise to lock the filter and finish the installation

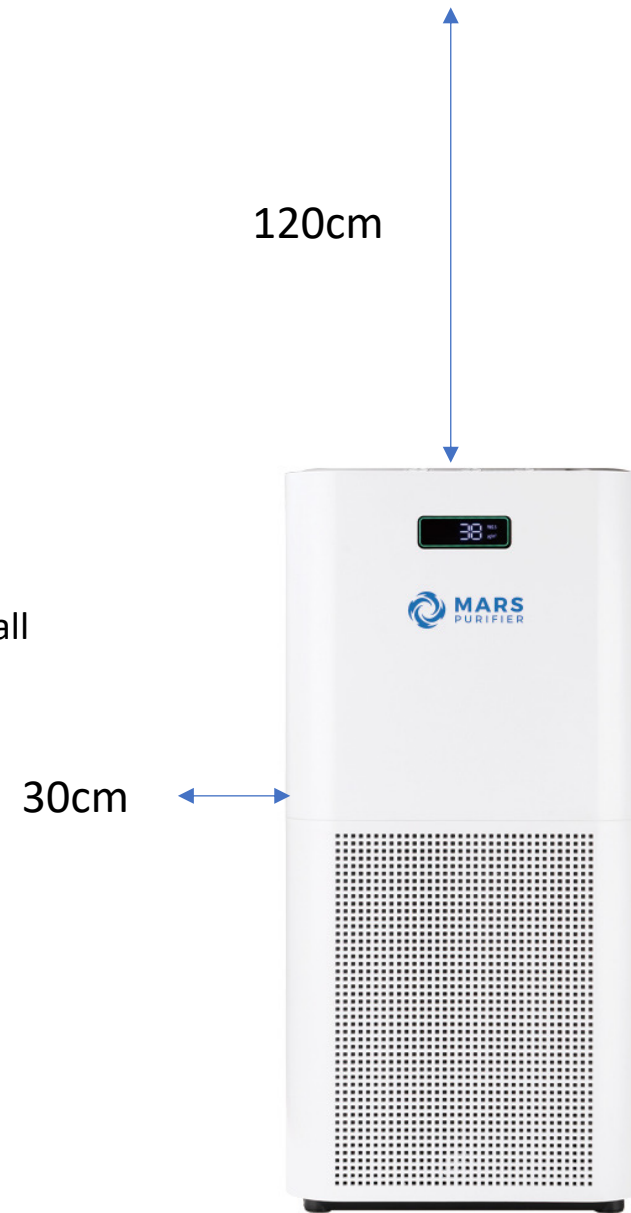


✓ Setup

Set up the machine, connect the adapter and then start

Settings

- To ensure optimum performance
- Keep the product at least 120cm from the ceiling and 30 cm from the wall





Function

filter reminder - 4 lights indicate the filter is at 100%, gradually over time this will decrease depending on pollution in the room and how much the machine is used

Function button – 3 functions

1. Anion and UV function – this can be turned on or off depending on your preference.
2. Wifi – long pressing this button will connect your device to the app, the light will flash when the machine is ready to connect
3. Child lock – when activated no other function can be changed

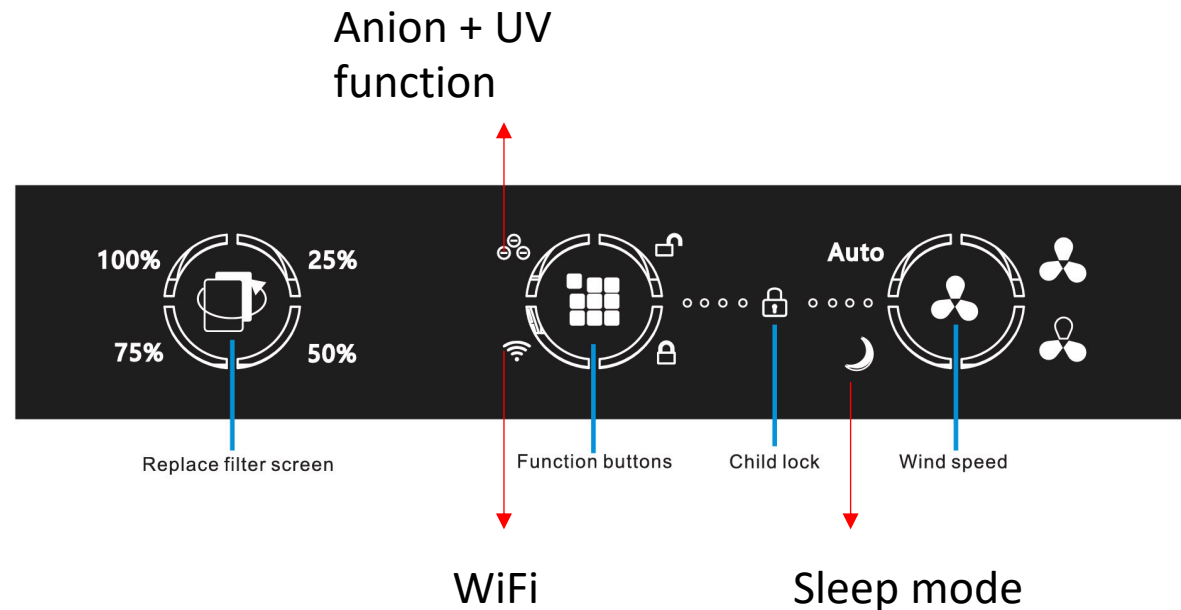
Wind Speed button –used for fan speed

In auto mode the fan speed will be at 1 when the air is at optimum levels PM 2.5 = 10.

When there is pollution in the air the fan speed will adjust accordingly until the air quality reaches optimum levels.

Alternatively you can set the fan speed to speed setting 2 or 3 – this will give you consistently higher air changes throughout the day.

In sleep mode – the fan speed is at 1 with all lights switched off.





Dust Sensor

This product is equipped with 'Dust sensor' which can detect pollution particles in the air

- At 'Auto mode' the sensory detects dust, can automatically control the air flow and start to work
- Substances easily detected – dust, mite corpses and excrements, pollen, fungus, mould spores, tobacco smoke and pet dander





Cleaning method of sensor

Clean once about every 3 months

1. open the cover plate of the dust sensor section
2. Use a blower to blow out the dust in the sensor

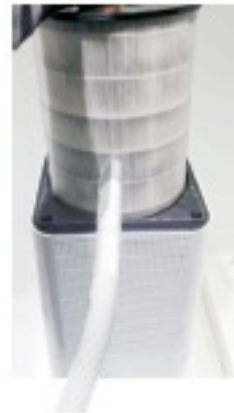




Filter Cleaning

This filter is a combined HEPA with activated carbon, please reference the cleaning as follows

1. Absorb the larger dust using a vacuum around the filter screen, etc.



Notice

- Be careful not to damage the surface of the filter
- Do not wash the filter
- When removing the filter, if you touch the black surface (activated carbon) from the inside around the catalytic deodoriser device, your hands may get dirty



Filter Replacement

standard time for replacement is 1 year.

In order to maintain the ultimate performance these units provide, it is important to replace the filter at the right time. The change indicator light is displayed on the air purifier when the filter needs to be replaced. Mars Purifier recommends that you replace your units filter approximately twice a year to maintain it's peak air cleaning efficiency. Recommended filter change: 6 months (4,380 hours) when used 24 hours a day

The replacement time will vary according to the method of use and the location where the product is set at. When used in places with heavy air pollution, the replacement time will be advanced

Mars Purifier indicator light is based on both the sensor and time.

Filter replacement warning light

The 'filter reset' lamp will flicker when the operating time reaches the filter's lifetime according to the timer built in the machine. When the indicator lights up, it is recommended to replace the filter in order to maintain the performance of the machine

Filter replacement warning light and reset way

Press the 'Filter' button for 3 seconds to restore the reset function

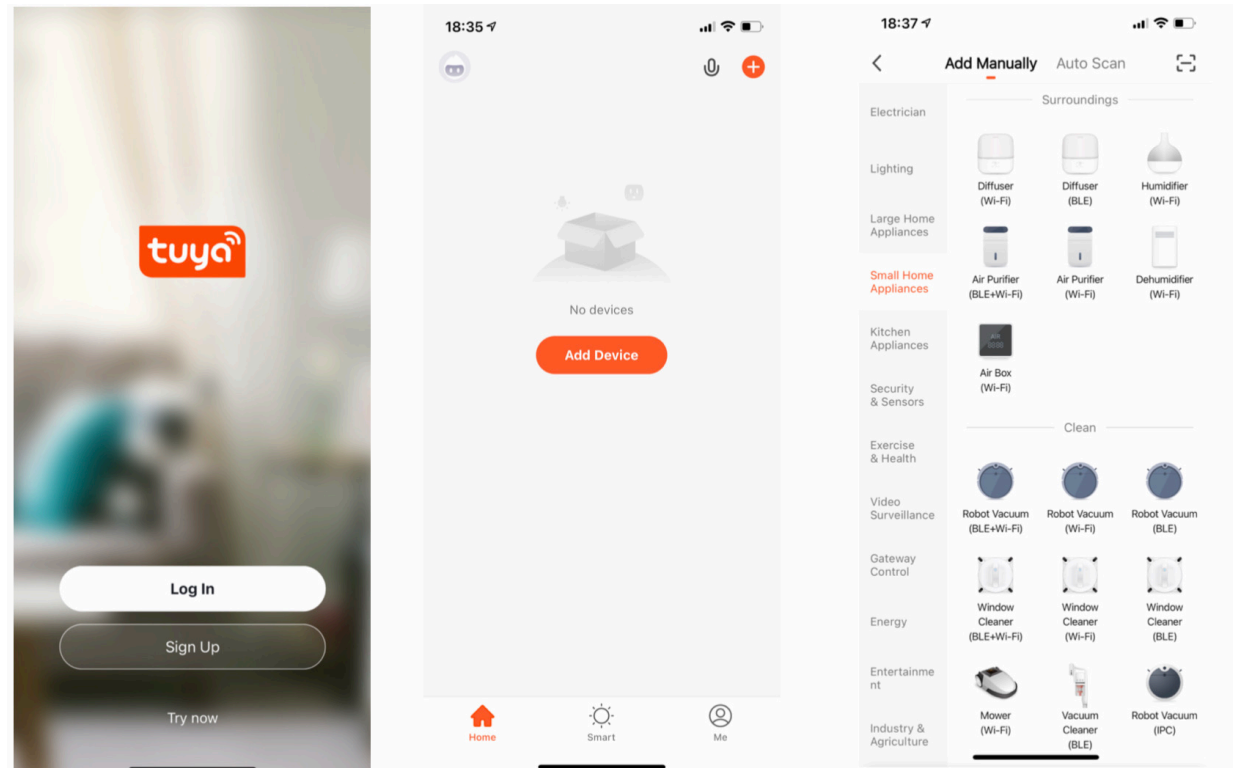
Notice

- In order to absorb and purify harmful gases, the formula activated carbon contained in the filter element may produce smell of slight acidity, which is a normal phenomenon.

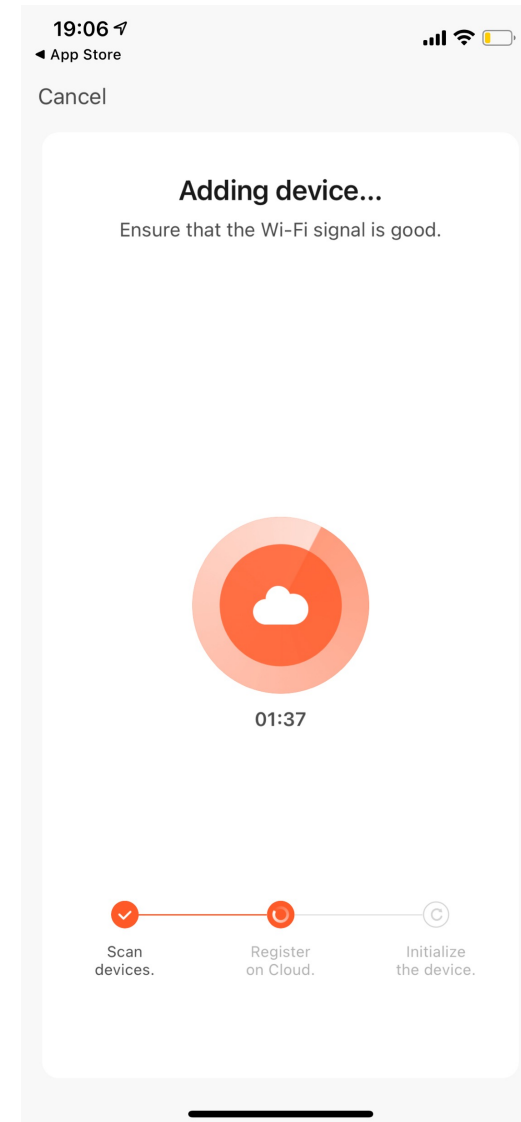
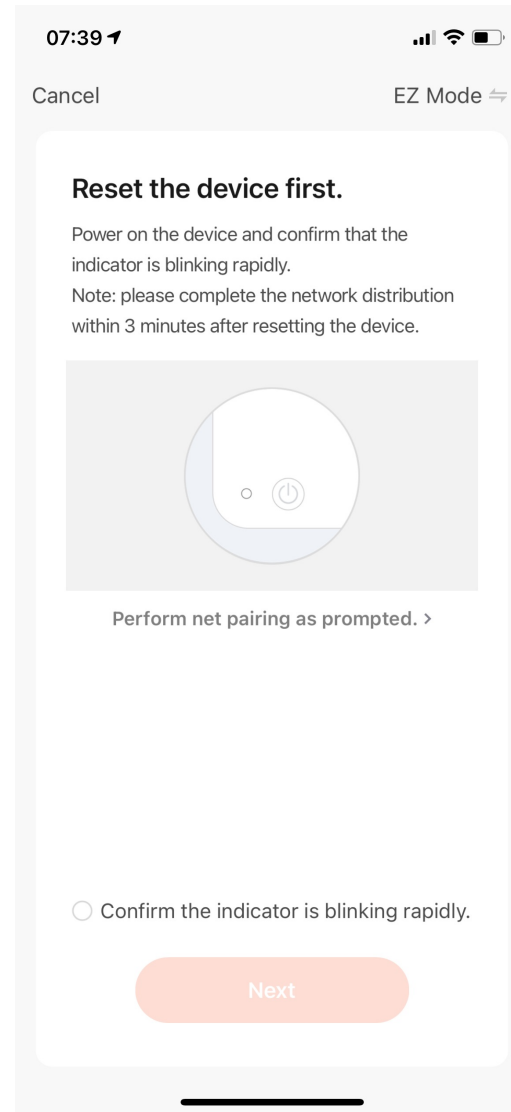
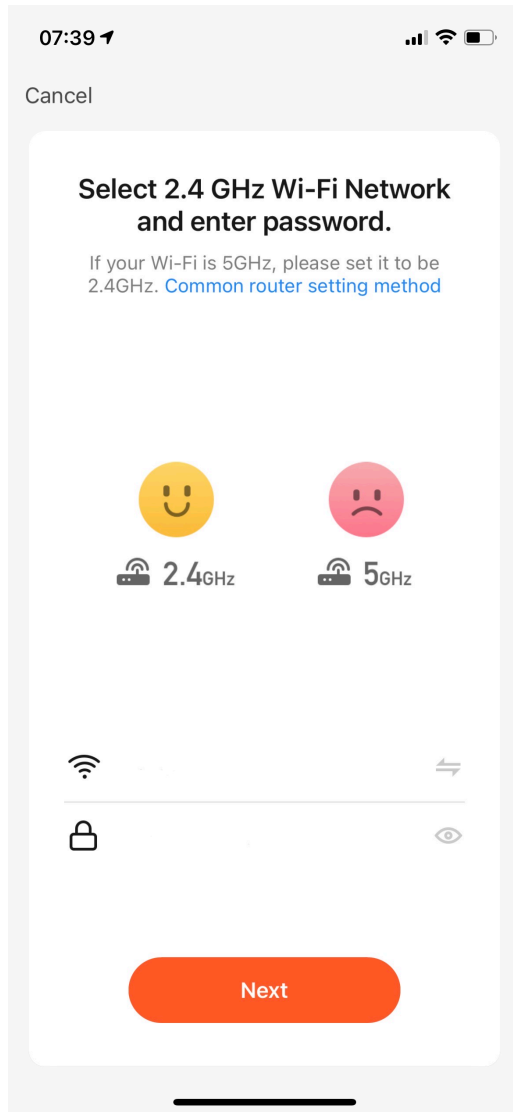


Smart phone connection - Tutorial

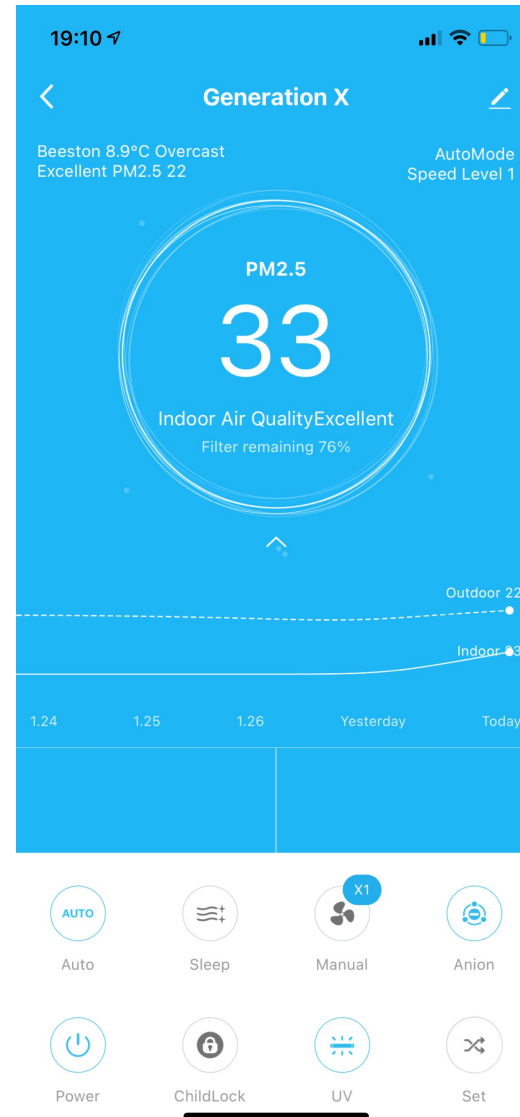
1. Touch the on/off button of the machine to start the machine.
2. Then touch the WiFi button for 3-5 seconds. When you hear a buzzer sound, you can release your hand. At this time, the indicator light goes the WiFi button flashes (a stable signal near the device shout router)
3. Find the installed APP icon, click open, and register
4. After complete ting the password setting, you will enter the following page, click “Add Device”, select small appliance, select air purifier, and enter the machine distribution network page.



4. Follow the on screen instructions



5. After successful network configuration, click “Finish” to enter the main page of device operation





Safety precautions

Handling	<ul style="list-style-type: none"> - When moving, please make sure the purifier stops running and power plug is pulled out. - Hold the firmly on the side of the machine to avoid excessive vibration or falling
Installation	<ul style="list-style-type: none"> - Do not start the machine in case of danger - The device air inlet should be at least 20cm from the wall or any other object.
Power supply precautions	<ul style="list-style-type: none"> - Do not squeeze, bend or twist the power cord, as the inner cord may be exposed or broken - Do not pull the power cord from the adapter when disconnecting the power cord. - Do not use inappropriate AC outlet. - Do not use the supplied power adapter on any other device
AC power cord	<ul style="list-style-type: none"> - Use the power adapter and socket as indicated below to avoid fire, electric shock or damage. - Please use only the supplied power adapter and do not use any other brand of power adapter - Disconnect the adapters power cord from the AC socket before performing maintenance or moving the machine.
In Use	<ul style="list-style-type: none"> - Stop using the product immediately if there is abnormal noise, peculiar smell, high temperature or the fan is rotating irregularly - Do not put fingers or foreign objects into the protective gear, movable parts, air inlet and air outlet. - Do not put hair, fabric, etc close to the main engine to avoid getting into or blocking the air inlet and outlet. - Do not sit, lean on or tilt the machine. - When used with the combustion unit, please ensure proper ventilation to avoid carbon monoxide poisoning.
Use limitation	<ul style="list-style-type: none"> - Do not use the machine in the following situations, otherwise electric shock, fire. And other damage may occur. - Unstable places - Bathroom, places with high temperature, high humidity and fire prone places.



FAQ

SYMPTOM	CONFIRM THE ITEMS	HANDLING METHOD
No exhaust air volume No change air volume The air volume is less than that when it was purchased.	<ol style="list-style-type: none"> 1. Check the filter is removed from the plastic bag 2. Check the filter is installed in correct way 3. Check is there any dirt in the filter? It will effect the performance 4. Confirm if the current operation mode is auto mode? Or sleep mode? 	<ol style="list-style-type: none"> 1. Remove filter form packing bag 2. Double check that the filter is installed in the correct way 3. Clean the filter, if there is no improvement, it is necessary to replace with a new filter. 4. Please confirm if the operation mode can be changed through the mode switch button
Although set to automatic mode, there is no response to dust and smell	<ol style="list-style-type: none"> 1. Is the sensor blocked by walls or obstacles? 	<ol style="list-style-type: none"> 1. If blocked remove the obstacles, if there is no obstacles clean the 'sensor part' on the back of the machine.
Smell	<ol style="list-style-type: none"> 1. Is the catalytic deodoriser of the filter new? 2. Is it used in the space where most people smoke or cook? 3. "Catalyst deodorant device" contains activated carbon and so on, sometimes will give out a weak odour. 4. Is it from another room? 	<ol style="list-style-type: none"> 1. Due to the use of high performance activated carbon as the raw material, the smell will appear at the beginning of use, usually after a week or so, the initial smell will weaken. 2. The filter has the property that can adsorb odour, so it can store odour temporarily. After running for a short time, the odour will gradually weaken 3. It can also be used after removing the "catalyst deodorant device". There will be no deodorization effect at this time. Please put the catalytic deacurator device in plastic bags for storage. 4. Sometimes it's the smell of a previously used room. Over a short period of time, the odour will slowly diminish.
Filter screen cleaning indicator light does not go off	<ol style="list-style-type: none"> 1. Whether the reset of filter screen replacement indicator is implemented 	<ol style="list-style-type: none"> 1. Ease rest the filter screen replacement indicator.
Leakage of black powder from the filter	<ol style="list-style-type: none"> 1. This is the raw material activated carbon powder. 	<ol style="list-style-type: none"> 1. Although it is harmless to human body, please place sheets of newspapers etc when replacing the filter.
The odour cannot dissipate	<ol style="list-style-type: none"> 1. The Deodorisation ability of catalyst deodoriser can be restored to the corresponding degree automatically. Based on the environment in which it is used, it sometimes fails to recover. 2. The odour components (pet, building materials) that are produced continuously at ordinary times cannot be completely removed. 	<ol style="list-style-type: none"> 1. Please place the dismantled "catalyst deodorant device" in a well ventilated place for about half a day 2. The smell that is constantly produced in usual time cannot be completely removed, so please take measures such as ventilating the room at the same time.



Warranty

Name	
Address	
Post code	
Contact number	
Distributor	
Sale Date	
Product Name	
Manufacturer Serial Number	

This card should be filled clearly and sent back to our team for registration within one month after purchase.