

Woman on the NEON MOON

Meet Dio Davies, the Notting Hill designer whose creativity knows no bounds at all

Having grown up surrounded by all things design, with an architect as a father and an artist as a mother, thinking beyond what has already been done has always been second nature to Dio Davies. Walking into her studio, a cottage of sorts among an array of colourful quintessentially Notting Hill town houses, you'll be instantly struck by how much attention has been paid to detail. There are huge swathes of chalky white everywhere, set against exposed brick walls, gloomy navy colours, and broody blacks, with a plethora of striking art cladding the walls, including a large black and white print of Mohammed Ali, covered in glitter.

Once you've assessed the sight before your eyes, you'll know for certain that good taste runs through Davies' veins, like the lifeblood of her world, that thing that gets her up in the morning.

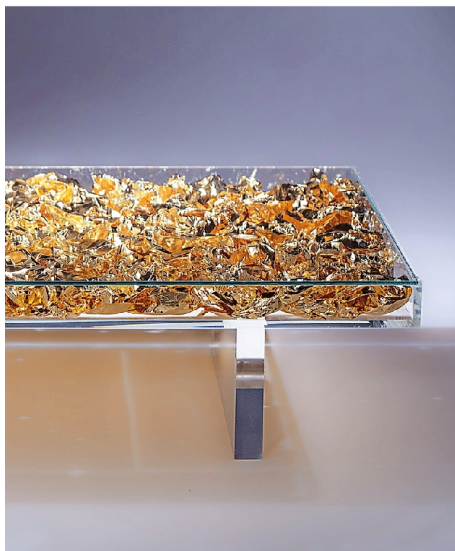
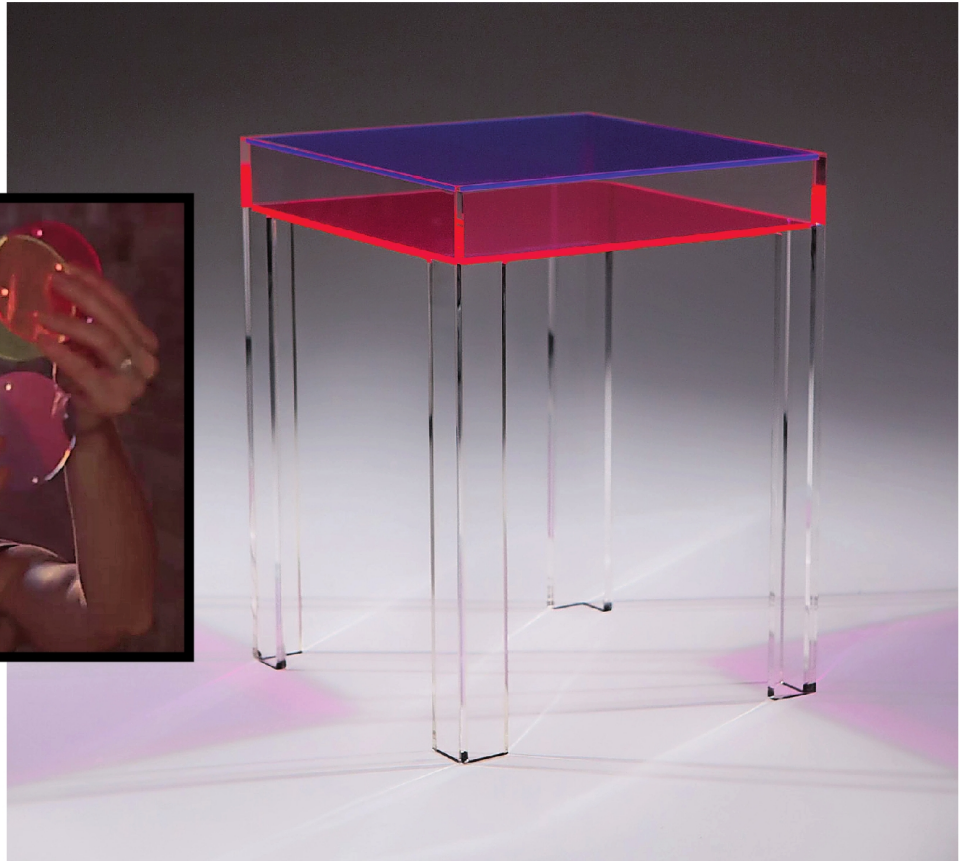
'My father had always been very interested in astronomy, so I was always looking through telescopes up at the stars as a girl,' she says. 'I've always loved everything to do with art,

colour and texture, but astrology has been the driving force behind many of my projects, including the gold leaf Solar Table which we have recently launched and the Luna Table which is just about to be released.'

Owning a property company with her husband, Davies' design brand was birthed when prospective buyers started enquiring about the furniture inside the homes they had built. For her, the next step was obvious, and she's never looked back. On the top floor of her studio, her popular Happy Pill Table sits in the middle of the room, quietly commanding the space around it. It's a clear rectangle filled with what look like coloured pills with white tips that have happy faces drawn on them, extraordinarily playful yet oozing sophistication simultaneously. Downstairs, her striking self playing piano is on display, with its interior organs clearly visible through its transparent glassy coating, alongside a bright pink.

Having always had a soft spot for neon because of the way it breaks up and redirects light, something that is

I've always felt very much that the future is now, especially in terms of design



The Dio Davies gold leaf Solar table (left), and the Neon Equinox range (above) are the designer's star pieces for this season, with the much anticipated Luna Table to follow



reflected in its entirety through the Dio Davies brand's Neon Equinox range, a collection of clear acrylic tables paired with blocks of multicoloured neon acrylic colours. They are even available in all neon green for those who can't get enough of that invigorating acid green shade, like Davies herself. No matter what colour you choose, each table will sit in the space around it tantalisingly, playing with light flow and creating delicate patterns around the room.

Davies explains: 'I am a big fan of Sci-Fi; I grew up watching things like Blade Runner, Tron and Star Wars. All of these films were so futuristic and minimalist, in the most elegant way possible. They all painted the future in such an idyllic light and I've always felt very much that the future is now, especially in terms of design.'

'Part of the beauty of life is trying to do what has never been done, that's how you leave your mark. Designers and buyers everywhere are now really embracing new technologies and materials. Just look at what we can do with acrylic! The lightness of acrylic means it doesn't interrupt what is going on around it yet it still holds its own as a point of fabulous design.'

The Dio Davies team will go above and beyond to give you something that is both, fascinating, beautifully crafted and

completely personal to you. They've filled dining tables with dried lavender grain out in the French country and suspended ancient tree trunks engraved with an entire family tree inside a clear structure to create the illusion of floating. For Davies, nothing is impossible when you think outside of boundaries and limitations, because that's where the magic is made, outside the realms of restraint where timeless pieces are born.

Her Goldfinger meets neon chameleon meets the midnight sky wrapped in the lagoon nebula approach to furniture creation is one of a kind, resulting in pieces that will bring a modern or traditional interior into its own, serving as the precious last missing piece to the design puzzle that is your home.

For more information visit diodavies.com