

Accessories

30" Medicine Cabinet

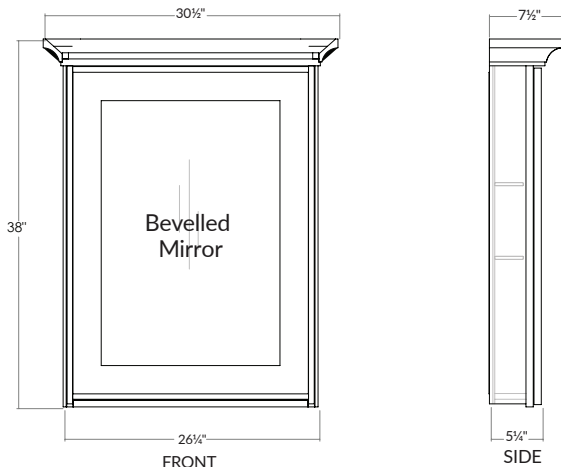


Features:

- Flush or recessed option at no additional cost
- Finished interior
- Two adjustable glass shelves
- Magnetic glass door
- Hinged right only
- Available in all vanity finishes

NOTE: 30" recessed installation for wall opening requirement is 35"x25½". The crown molding depth is 2½".

Specifications:



48" Medicine Cabinet



Features:

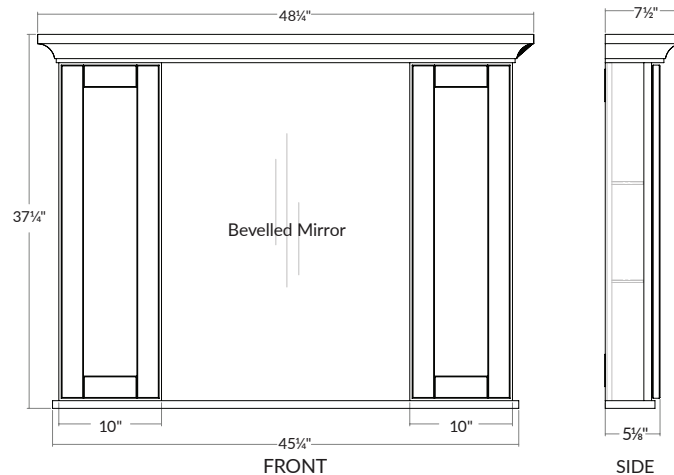
- LED light option for secondary light source
- Soft-closing mechanism on doors
- Finished interior
- Six adjustable glass shelves
- Solid wood crown molding
- Available in all vanity finishes



LED LIGHT OPTION

When selecting the LED Light Option, three 3W LED flush mount lights are installed in the 48" cabinet. Lights are soft white (3,000 K).

Specifications:



NOTE: Measurements are approximate and are provided for informational purposes only.