



VC7020 Vacuum Cleaner



duronic.com



[duronic](https://www.youtube.com/duronic)



[@duronicmedia](https://www.instagram.com/duronicmedia)



[Duronic](https://www.facebook.com/Duronic)



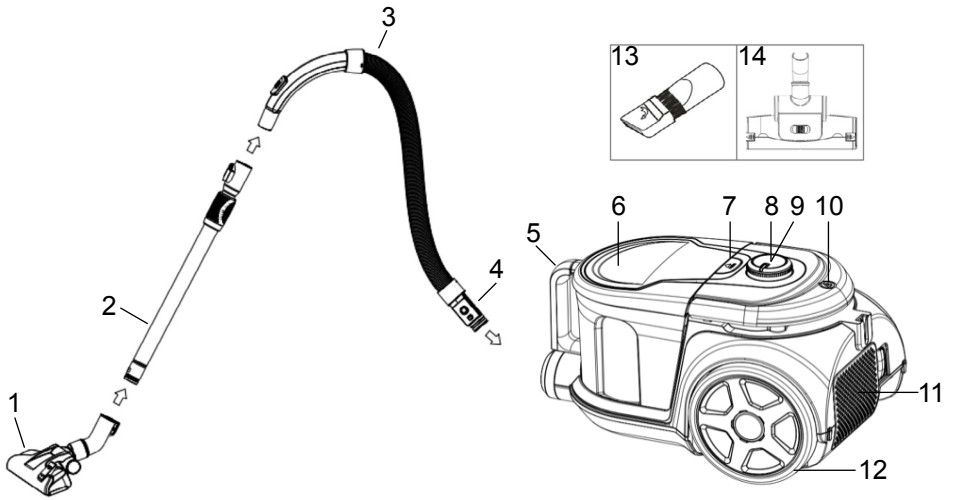
[@duronicmedia](https://www.twitter.com/duronicmedia)

Contents

Features and Specifications	4
Safety Instructions	5
Assembling the vacuum cleaner	7
How to use	7
Using the Attachments	8
Cleaning and Maintenance	9
Emptying the dust container	9
Cleaning the filters	11
Warranty	12

Features and Specifications

Model	Power	Voltage Rating	Unit Size	Unit Weight
VC7020	700W	220-240V, 50/60Hz		



- | | |
|----------------------------------|---|
| 1. Floor brush | 8. Speed/power control dial |
| 2. Telescopic tube | 9. Power button |
| 3. Flexi hose | 10. 2-in-1 Handle & Cable rewind button |
| 4. Hose connector | 11. 2nd HEPA Air filter |
| 5. Dust container handle | 12. Back wheels |
| 6. Dust container | 13. 2-in-1 tool |
| 7. Dust container release button | 14. Turbo brush |

Safety Instructions

This appliance is for indoor/household use only. Do not use outdoors.

This appliance is not intended for use by persons (including children) with reduced physical, sensory or mental capabilities, or lack of experience and knowledge, unless they have been given supervision or instruction concerning use of the appliance by a person responsible for their safety.

Children should be closely supervised at all times to ensure that they do not play with the appliance.

Do not operate this appliance if the power cable or plug is damaged. If either is damaged return it to Duronic for service or repair by professional technician.

Please ensure the mains power supply is 220-240V / 50Hz

Never try to replace the parts and repair the unit by yourself.

Do not use this vacuum cleaner outside or on wet surfaces.

Do not use any attachments or parts that are not manufacturer approved.

Always carry the vacuum with the carry handle. Do not carry by the hose or the power cable.

Do not unplug the vacuum by pulling on the power cable. To unplug, simply grip the plug and pull.

Do not handle the plug or vacuum cleaner with wet hands.

Do not immerse any part of the vacuum cleaner into water or any other liquids.

Always ensure there are no blocked or obstructed openings that restrict air flow.

Keep hair, loose clothing, fingers and all body parts away from air vents and openings.

Do not obstruct the air vents/filters.

Do not use the vacuum cleaner without air filters in place.

Do not pick up hard or sharp objects such as glass, nails, screws, coins etc.

Take extra care when vacuuming on stairs.

Do not use the vacuum to pick up flammable or combustible materials (lighter fluid, gasoline etc.) or use in the presence of explosive liquids or vapour.

Do not use in an enclosed space filled with vapours given off of oil-based paints, paint thinner, moth proofing, flammable dust or any other explosive or toxic vapours.

Do not vacuum burning material and ashes

Always unplug the vacuum cleaner before connecting or disconnecting the hose.

Do not allow the plug to whip when rewinding it.

Store your vacuum indoors in a cool, dry place.

Do not use the vacuum to clean your pets or any other animal.

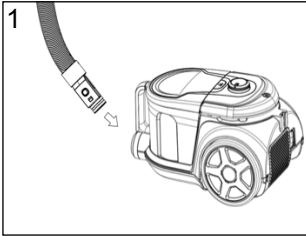
If the dust cup gets damaged, change immediately before the next use.

If the HEPA filter/s get damaged in any way, please ensure these are replaced before the next use.

If any abnormal noise, smell, smoke or any other failure or breakage is found during the operation, you should turn off the switch and unplug the vacuum from the mains socket. Then contact Duronic directly to enquire about repair - do not repair it by yourself.

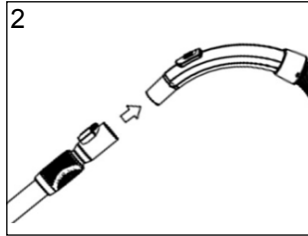
The VC7020 is a bagless vacuum cleaner which has two HEPA filters and one sponge filter. These filters are crucial to the vacuum's performance so we recommend that the user ensures they are cleaned at least once a month. This will ensure that the vacuum performs at an optimal level of suction and cleaning power. For more guidance on cleaning and maintenance, please see page 8.

Assembling the Vacuum Cleaner



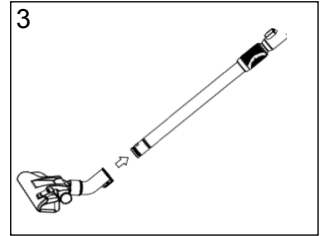
Insert the hose connector in front of the vacuum cleaner into the inlet hole, then turn it to the right (clockwise) to lock it in place.

If you ever need to disassemble the vacuum, you can turn the hose connection back to the left and pull it out.



Attach the telescopic tube to the flexi hose.

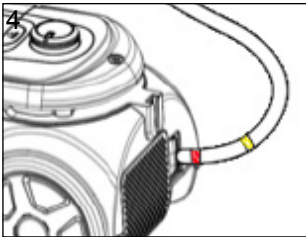
If you ever need to disassemble the vacuum, you can pull these apart to separate them.



Insert the telescopic tube into the opening on the floor brush (or turbo brush if preferred).

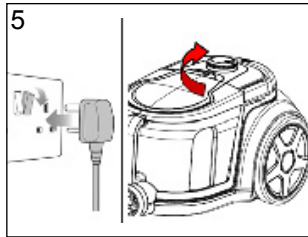
Rotate the brush to fasten it on securely.

How to Use



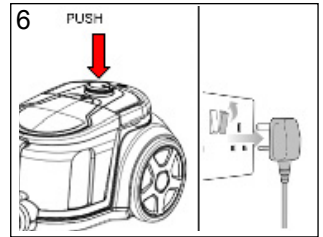
Pull the power cable out of the vacuum, ensuring that you stop when you see the yellow mark.

Make sure that the red mark is not visible; if it is, this means you have pulled the cable out too far.



Attach the telescopic tube to the flexi hose.

If you ever need to disassemble the vacuum, you can pull these apart to separate them.



When you finish vacuuming, turn off the power and unplug from the mains socket. Push down the rewind handle/button to wind the cable back into the machine.

Use your other hand to guide the cable to ensure it doesn't whip back and cause injury.

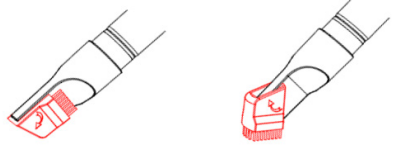
Using the Attachments

2-in-1 Tool

This nozzle attachment is used for reaching all the difficult places that the larger brush cannot.

The flat end is a crevice tool which is perfect for reaching small crevices and hard-to-reach areas such as corners or down the back of furniture.

The brush end is perfect for cleaning upholstery, curtains and delicate areas such as bookshelves, keyboards and window ledges.



Floor Brush

The floor brush can be used on both carpet and hard floor surfaces.

For hard flooring:

Use your foot to press the pedal on the top of the brush to let the bristles out.

For carpets:

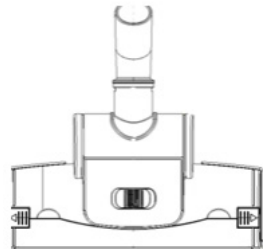
Use your foot to press the pedal again to retract the bristles.



Turbo Brush

The turbo brush can be used on both carpet and hard floor surfaces.

It provides a deeper clean for carpeted floors.

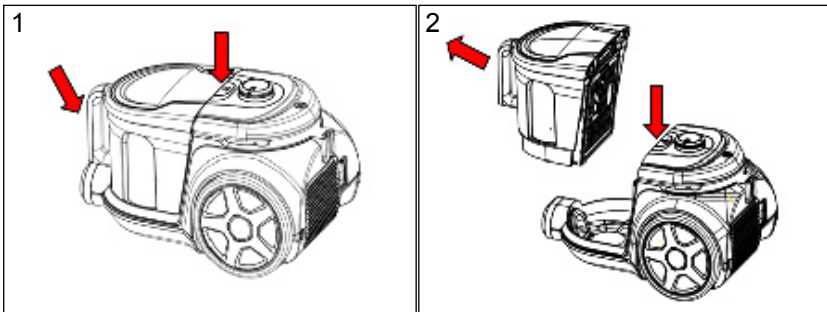


Cleaning and Maintenance

It is important to look after your vacuum cleaner to prolong its working life and to keep it working optimally. We recommend that if the vacuum is used regularly, that the sponge filter is cleaned at least once a month to ensure optimal performance and prolong the longevity of the device.

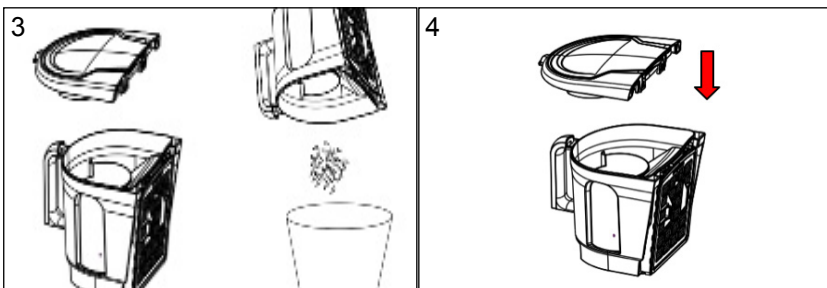
Emptying and cleaning the dust container

It is important to empty the dust container regularly, particularly when the dust inside reaches the MAX indicator on the container.



1 Hold the dust container with one hand and push the release button with the other hand.

2 Take the dust container out of the machine.



3 Take the dust container to the rubbish bin and hold the container over it.

Push the release button to open and remove the bottom of the dust container.

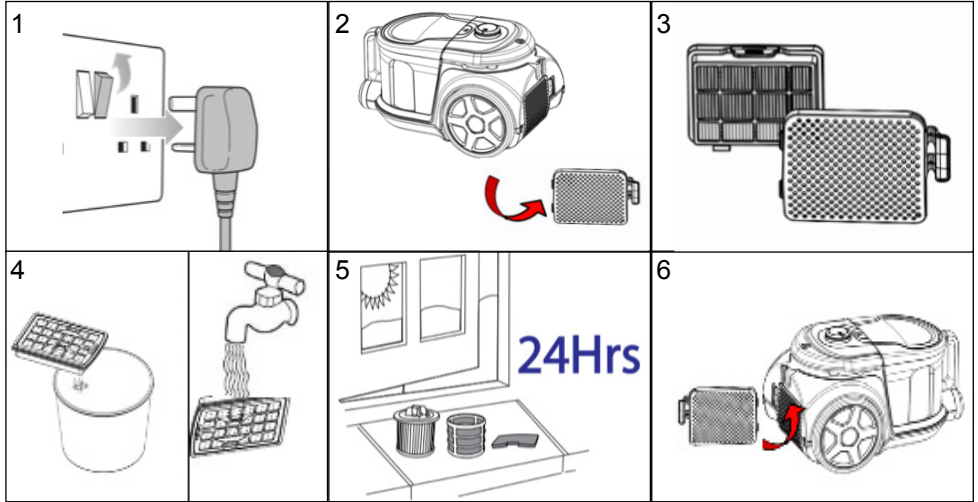
Tip the dust container upside down to empty the contents directly into the bin.

4 Close the dust container by securing the lid back on top of the cup.

Put the dust container back onto the vacuum and click back into place.

Cleaning the HEPA filters

Cleaning the 1st HEPA Filter

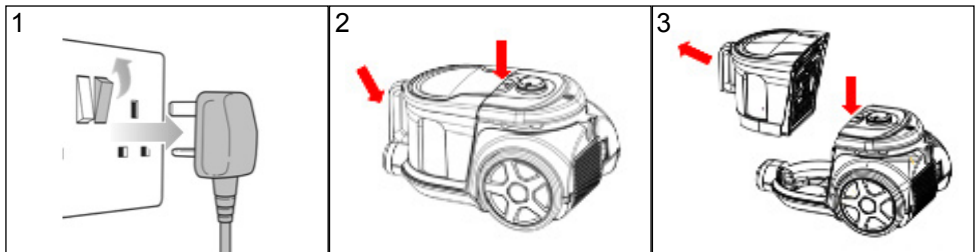


Carefully remove any obvious deposits of dust and hair on the filter and wash in warm water.

Leave to air-dry naturally.

When completely dry throughout, replace back into the vacuum cleaner and close the back cover.

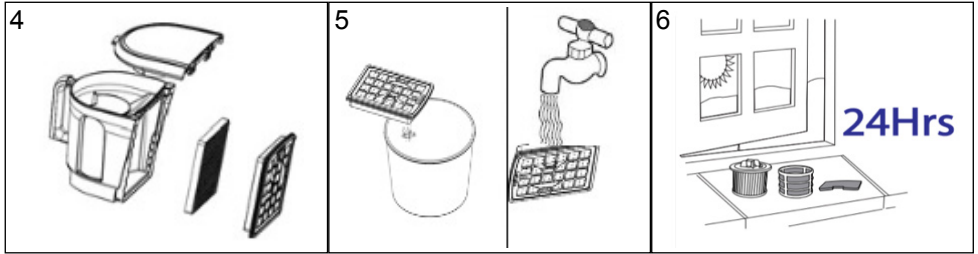
Cleaning the 2nd HEPA and Sponge Filters



Ensure that the vacuum is unplugged from the mains electric socket before undergoing any cleaning.

Hold the dust container with one hand and push the release button with the other hand.

Take the dust container out of the machine.



4 Remove the filter casing and separate the sponge filter from the HEPA filter.

5 Carefully remove any obvious deposits of dust and hair on the filters and wash both in warm water.

6 Leave to air-dry naturally. When completely dry throughout, replace back into the vacuum cleaner and close the back cover.

Please note:

- The VC7020 vacuum has two HEPA filters; one on the underside of the dust container jug, the other on the base of the vacuum. If the vacuum is used lightly/less often, these filters should be cleaned properly at least twice a year. If, however, the vacuum is in frequent/heavy use, we recommend the filters are cleaned monthly.
- If a filter becomes too dirty or clogged it can reduce the suction level of the vacuum.
- Do not ever put a wet filter back into the vacuum; always ensure the filters are completely dry before inserting them back into the vacuum. Putting a wet filter into the vacuum will result in suction loss and can damage the motor.
- Do not wash the filters in a washing machine or put them in a tumble dryer. They are to be washed by hand and air dried only.
- Do not use hot water or detergents of any kind. Wash only in water.
- Always ensure that the filters are fixed back into place properly before using the vacuum. Do not use the vacuum without any filters inside.

Replacement filters are available for purchase separately directly from Duronic.

Warranty

1 Year Guarantee from Shine-Mart Ltd, Trademark owners of Duronic Products.

NOTE: THESE STATEMENTS DO NOT AFFECT YOUR STATUTORY RIGHTS AS A CONSUMER

This product has been manufactured under the strictest of quality control procedures, and using the highest quality of materials, to ensure excellent performance and reliability. It will give very good and long lasting service, provided it is properly used and maintained. The product is guaranteed for 1 years from the date of original purchase. If any defect arises due to a faulty materials or poor workmanship, the faulty product must be returned to the original place of purchase. Refund or replacement is at the discretion of that company.

Duronic Products are offered with a 1 year guarantee under the following conditions:

1. The product must be returned to the retailer with original proof of purchase.
2. The product must be installed and used in accordance with the instructions contained in this operating manual.
3. It must be used only for domestic purposes.
4. It does not cover wear and tear, malicious damage, misuse, neglect, inexpert repairs or consumable parts.
5. Shine-Mart Ltd has no responsibilities for accidental or consequential loss or damage.
6. Shine-Mart Ltd are not liable to carry out any type of servicing work, under the guarantee
7. Valid in the UK only



Imported by Shine-Mart Ltd, RM3 8SB



Information on waste Disposal for Consumers of
Electrical & Electronic Equipment.

This mark on a product and/or accompanying documents indicates that when it is to be disposed of, it must be treated as Waste Electrical & Electronic Equipment, (WEEE).

Any WEEE marked products must not be mixed with general household waste, but kept separate for the treatment, recovery and recycling of the materials used.

For proper treatment, recovery and recycling; please take all WEEE marked waste to your Local Authority Civic waste site, where it will be accepted free of charge.

If customers dispose of Waste Electrical & Electronic Equipment correctly, they will be helping to save valuable resources and preventing any potential negative effects upon human health and the environment, of any hazardous materials that the waste may contain.

DURONIC