

Replacing the Flash Board

The compact flash board on the A2MC is the “hard drive”, it holds a number of files and programs that run the A2MC controller. The A2MC controller is a computer so operates very much like your desktop or laptop. In general it holds the following:

- Windows CE 6.0 operating system. This is the platform on environment that the A2MC controller operates on.
- The A2MC OS which is the application that runs on the A2MC that actually makes the machine “work”.
- The “personality” of the machine is defined by an XML file which is also resident on the compact flash drive.
- All the machine’s jobs are held on the compact flash.

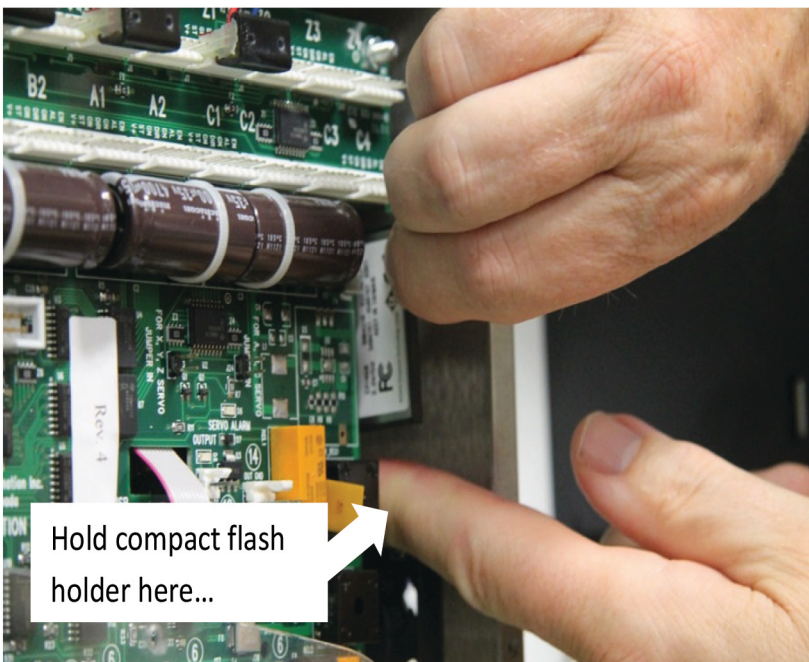
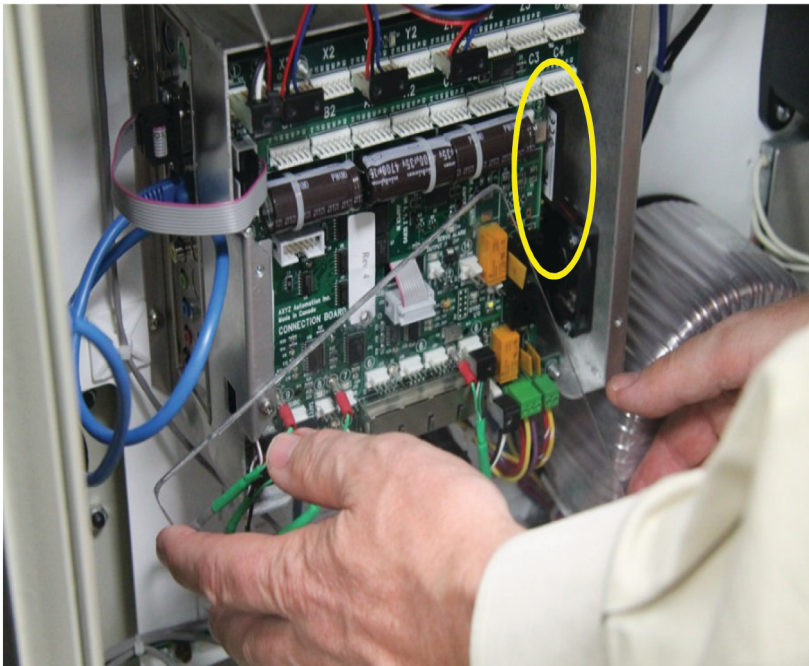
The compact flash is pre-formatted and already loaded with the Windows CE 6.0 operating system as well as the current version of A2MC OS.



Make sure it has the part number 25884 on it indicating this is formatted and set to go on an A2MC controller. Without the sticker it is probably a blank compact flash and will not work, it needs to be factory formatted.

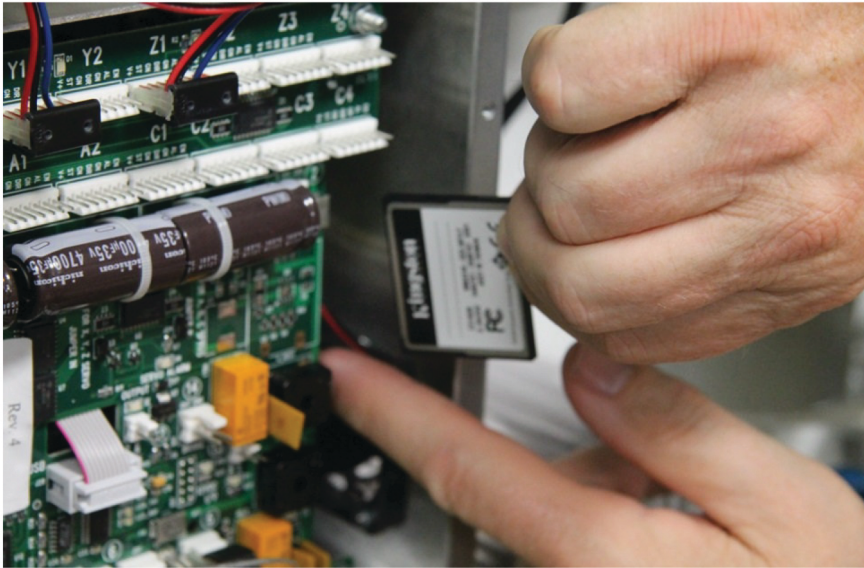
If required the correct compact flash drives can be purchased on www.cncroutershop.com.

To replace the compact flash first turn off the machine's power and open the control box. The compact flash is installed in the right side of the A2MC. Remove three of the screws of the plastic cover and swing it to one side. The location of the compact flash is circled in in yellow.



Carefully pull the compact flash out with one hand while holding in the compact flash holder with the other hand as shown.

If the compact flash holder disconnects simply carefully re-install it.



Pull the compact flash out as shown. Carefully observe which way it is installed so you can re-install the new one the same way.



Put the new compact flash back in the place of the old one. Make sure it goes in the right way.

It will not actually plug in incorrectly so if it is oriented properly it will slip in easily and tightly.

Replace the plastic cover.

The machine should now start up.

NOTE: The new compact flash will start the machine up but it will likely have a default XML personality file installed so the machine will not work properly. The proper XML personality file needs to be recovered and installed. This is a separate document that can be found on www.cncroutershop.com under part number 25884 or at the link <http://faq.cncroutershop.com/media/docs/TD-000246.pdf>.

To complete the installation follow the instructions from that document. Once recovered the machine should operate normally.