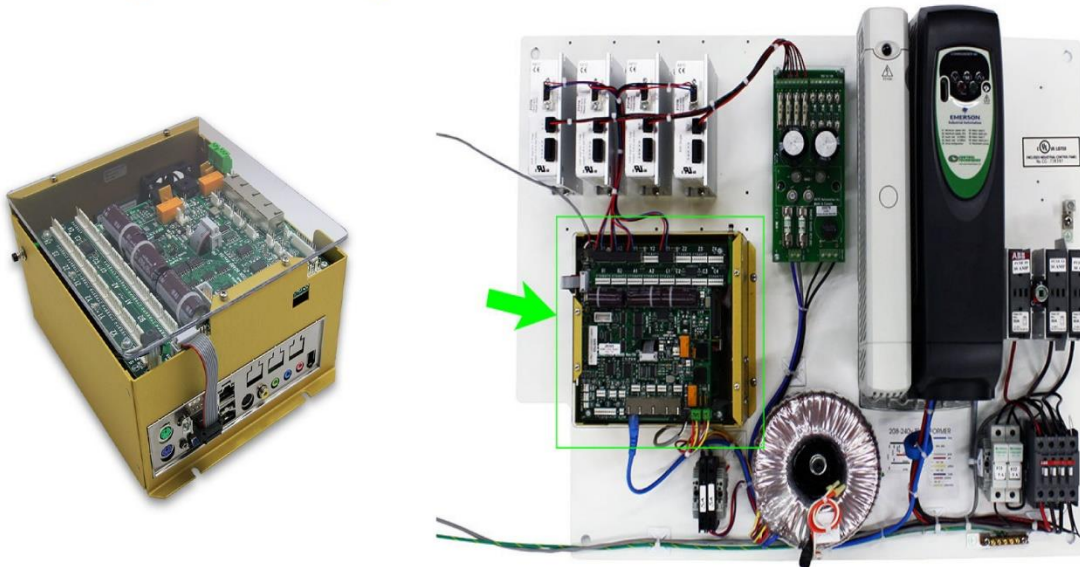


Removing and Installing an A2MC Controller



This document will describe how to safely remove and re-install an A2MC controller. This may be required if you need to send an A2MC into a service depot for repair or you wish to replace your A2MC.

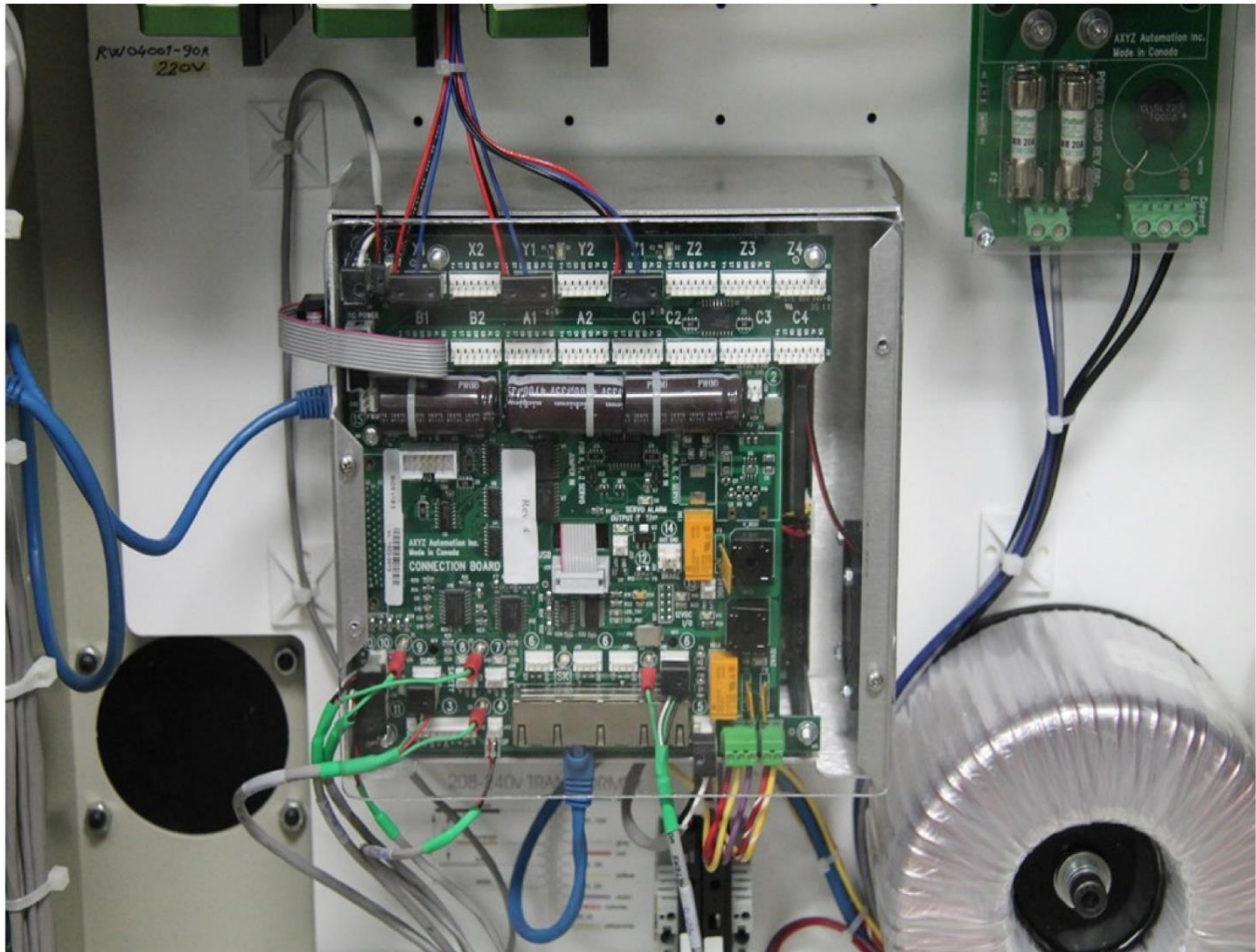


The first step is to shut your machine and open up the control box. The power should be completely off.

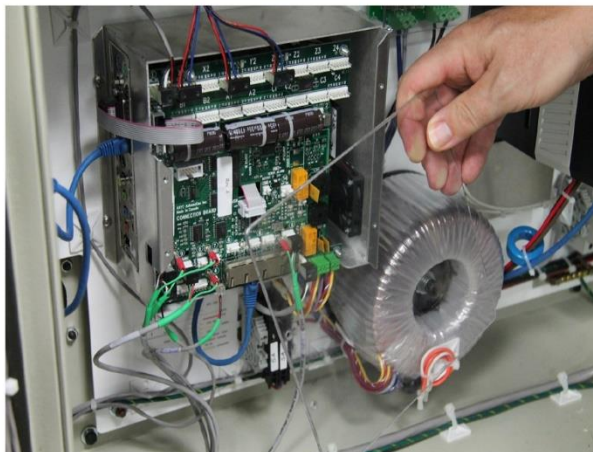
When the power is on there are a number of indicator lights inside the control box on a number of devices. Make sure there are no lights on anywhere.

Before proceeding to remove the A2MC read this whole document to familiarize yourself on how you will put it back together. There are a lot of connections that have to be made so you need to have a clear plan on how you will get it put back together. It is not quite Humpty Dumpty but can be frustrating if you cannot figure out the wiring!

Removing the A2MC

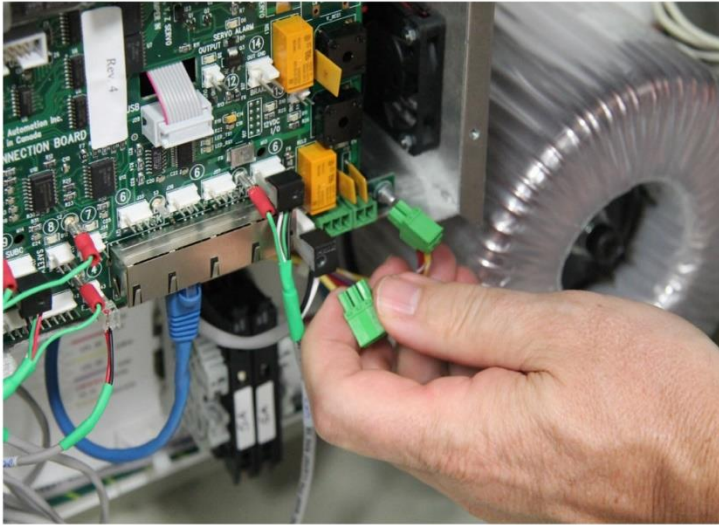


Before doing anything take some pictures of the cabling connections. You will likely need them later when you need to reassemble the controller. The cables are all marked so take notes as necessary.



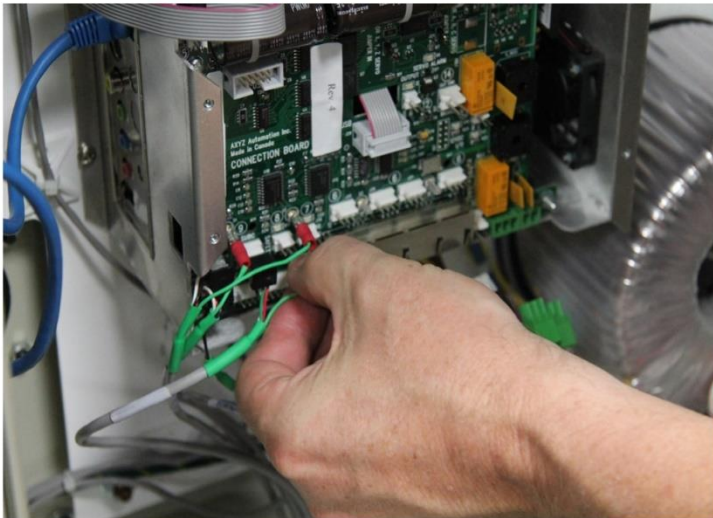
The first step is to remove the plastic cover to expose all the connections to the A2MC controller. The plastic cover is held on by four small Philips screws.

Remove them carefully and try not to drop them!



Now unplug all the connections.

NOTE all the connections unplug. Even the connectors that look like terminal blocks are pluggable. Do not unscrew any wires!



Work your way around carefully unplugging all the cables. Pull the connectors off by grabbing the connectors.

Do not pull on the wires as you may destroy the connection to the connector. That is a big problem and difficult to repair.

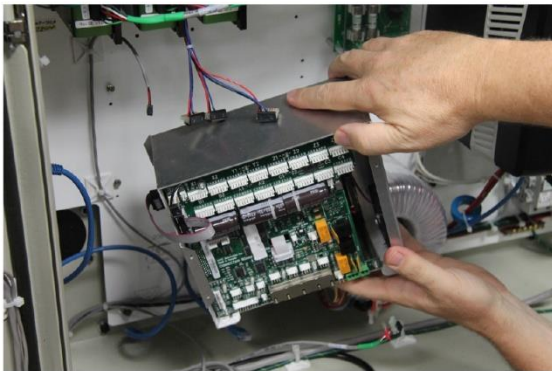


Keep going until you have unplugged all the cables.

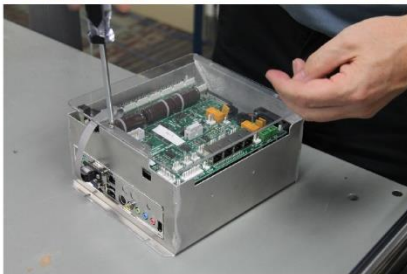
Double check to make sure there is nothing still plugged in. Pulling the A2MC away with a cable still plugged in will destroy it!



There are four Philips head screws holding the A2MC onto the control panel. **They are in open slots so only loosen the screws on the left and then remove the screws on the right.** The A2MC will slip out to the right.



Shipping the A2MC Controller



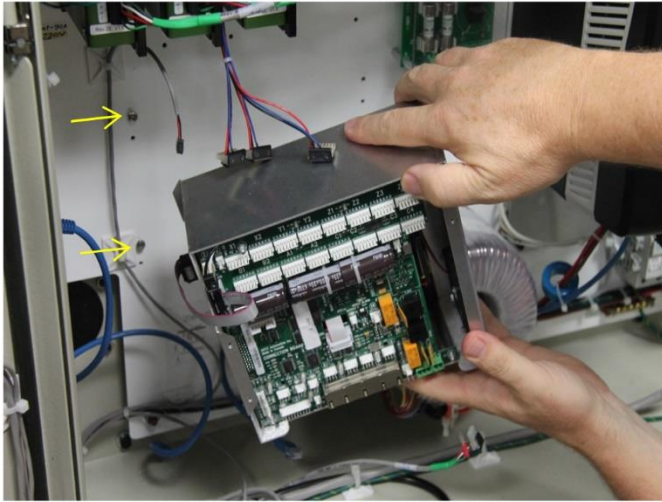
Before packing re-install the plastic cover. This will protect the A2MC during shipping and keep packing material from getting inside the controller. Ship it inside an appropriate box and make sure it is well packed with bubble wrap. Bubble wrap is not enough on its own, the A2MC needs to be in a sturdy shipping box. If using foam, wrap it in plastic first to protect the A2MC from static.

Make sure the RMA number is clearly written and visible. The preferred location is to write it onto one of the inside box flaps using a black marker. This greatly assists the service depot to direct the repair.

Ship using Overnight Express services as they are the most careful shippers. When shipping from US to Canada always use Fedex overnight services.

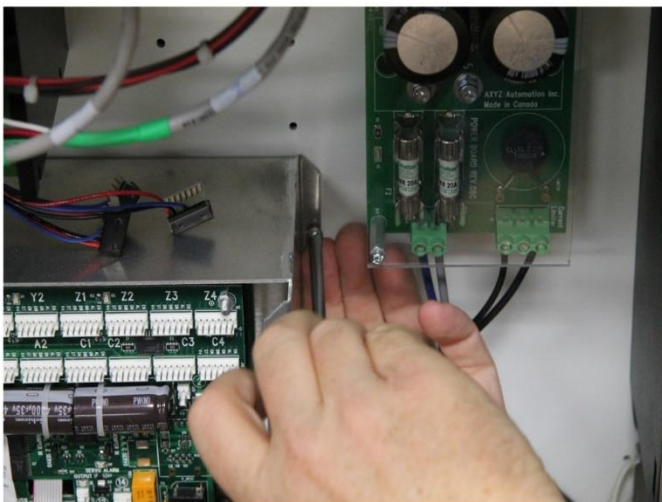
If you need any assistance with documentation contact a customer service representative.

Installing an A2MC



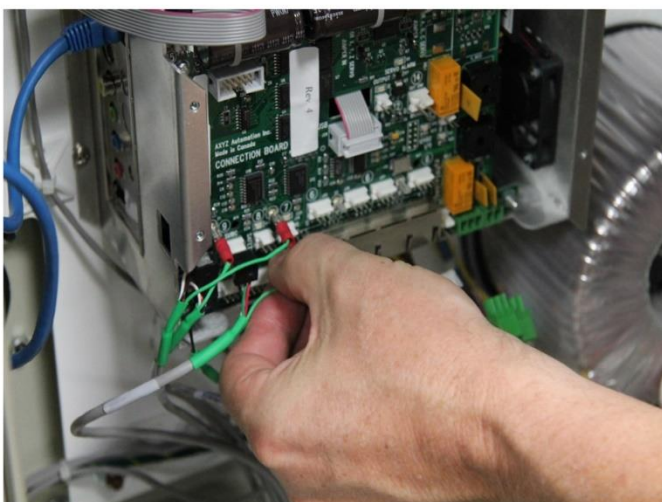
Unpack the A2MC and take the plastic cover off before re-installing the A2MC.

Make sure the two right screws (indicated by the arrows) are loosely in place. This will allow the A2MC to slip into place much easier and aligns the holes.

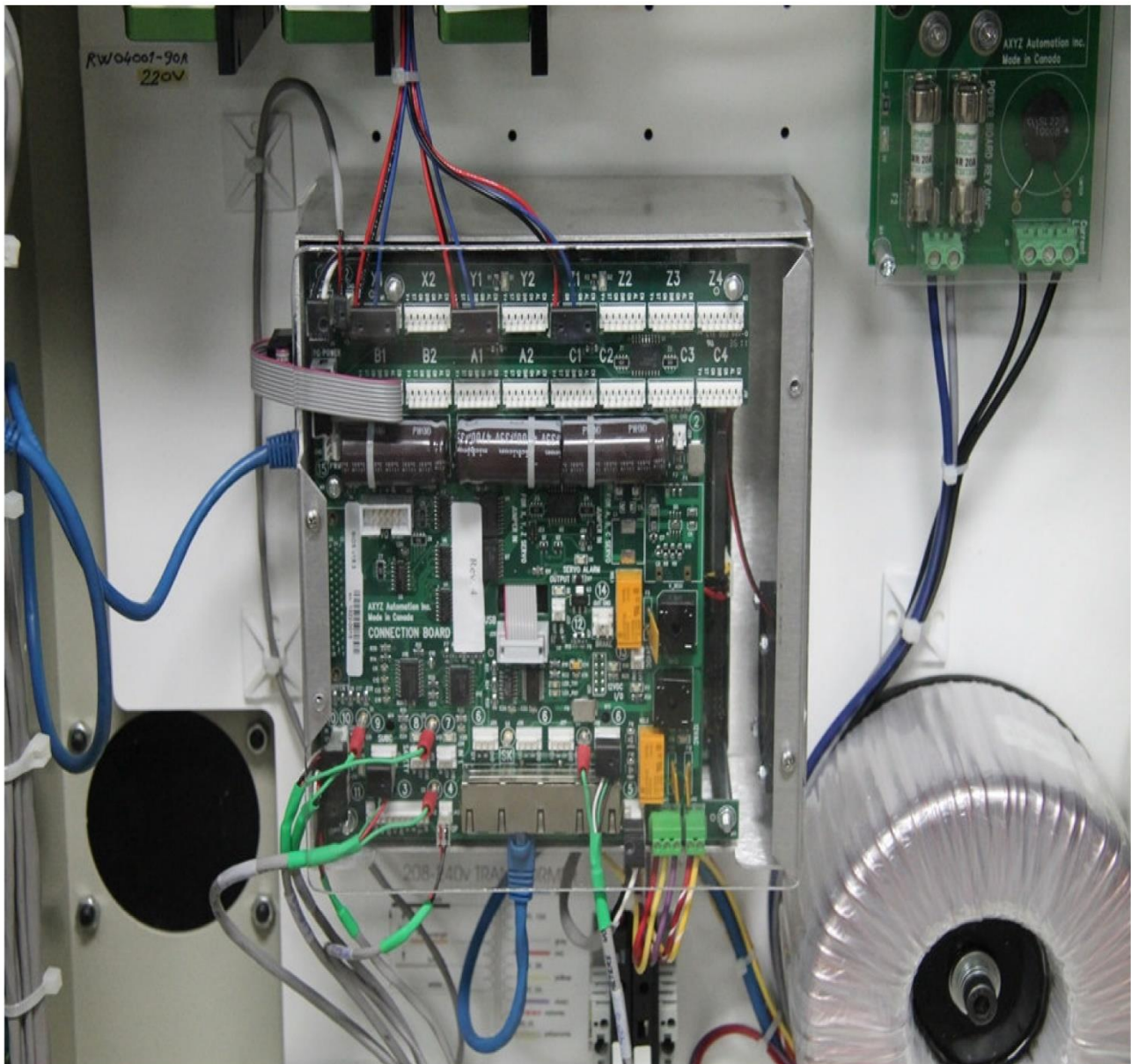


Next put in the top right screw as shown. This is the easiest one to install.

Once this screw in place the A2MC will no longer fall. Now put the lower right screw in and then tighten all the screws, firmly installing the A2MC.



Now plug in all the cables and connectors referencing pictures and notes that you made earlier before un-installing the A2MC.



This picture shows all the connections put back in place. Note that this is an example of a specific machine, your machine quite likely has other and different connections.

Once all the connections are made replace the plastic cover. Use a magnetic screw driver to avoid dropping screws into the A2MC controller. If you do drop a screw into the controller you need to get it out! Leaving it rattling in the controller will eventually short something out and destroy the controller.