

OPTIMA GARMENT SPECIFICATIONS

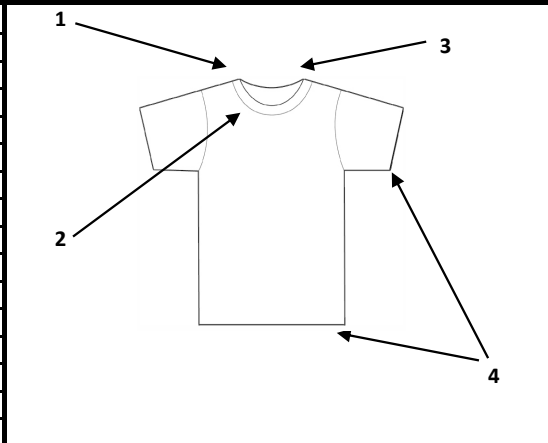
Style # _____ **Date:** 3/10/19

Style: Mens Logan Tee **Size:** S-M-L-XL-2X

Fabric:
100% Carded Open End Cotton
18/1 200 grams-6.0 oz

Label:

- 1 1" rib height
- 2 Set in Collar
- 3 Taped shoulder to shoulder
- 4 Double needle sleeve and bottom
-
-
-
-
-
-
-
-
-
-
-



Special Instructions:

Notes:

Description	XS	S	(M)	L	XL	2X
HPS Length	25 1/2	27 1/2	29 1/2	30 1/2	31 1/2	33,5
Width	17	19	21	23	25	27
waist	17	19	21	23	24 1/2	26
Sweep	17	19	21	23	24 1/2	26
Arm Hole Opening-STRAIGHT	9 1/2	10	10 1/2	11	11 1/2	12
Neck Opening	7 1/4	7 1/4	7 1/2	7 3/4	8	8.25
Front Neck Drop-HPS To Seam	4	4 1/4	4 1/2	4 3/4	5	5,25
Back Neck Drop-HPS To Seam	3/4	3/4	3/4	3/4	3/4	0,75
Sleeve Length From Shoulder Edge	7 3/4	8	8 1/4	8 1/2	8 3/4	9
Biceps 1" below armhole	8 1/2	9	9 1/2	10	10 1/2	11
Sleeve Opening	6 1/2	7	7 1/2	8	8 1/2	9
Sleeve Cap HEIGHT	2 1/2	2 3/4	3	2 1/4	2 1/2	2,75
Neck Rib Height	1 1/8	1 1/8	1 1/8	1 1/8	1 1/8	1 1/8
Shoulder Width	18	19	20	22	23 1/2	25
Shoulder Slope	1 1/2	1 1/2	1 1/2	1 1/2	1 1/2	1 1/2

TOL +/-
1/2
1/2
3/8
1/4
1/4
1/4
1/4
1/4
1/8
1/4
1/4

OPTIMA GARMENT SPECIFICATIONS

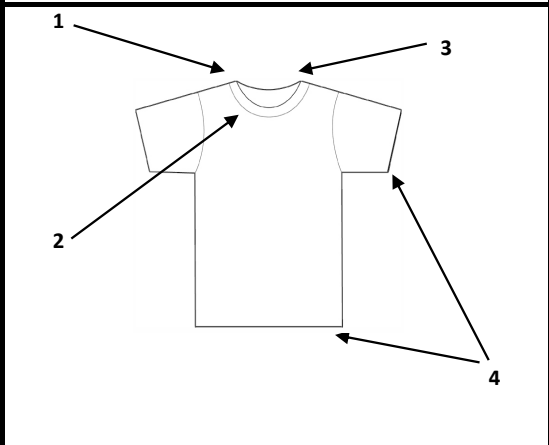
Style # 47368 **Date: 6/10/19**

Style: Mens Logan PFD Tee **Size: S-M-L-XL-2X**

Fabric:
 100% Carded Open End Cotton
 18/1 200 grams-6.0 oz (finished weight)

Label:

- | | |
|---|---------------------------------|
| 1 | 1" rib height |
| 2 | Set in Collar |
| 3 | Taped shoulder to shoulder |
| 4 | Double needle sleeve and bottom |
| 5 | Sewn with cotton thread |
| | |
| | |
| | |
| | |
| | |
| | |
| | |
| | |
| | |
| | |
| | |
| | |
| | |
| | |
| | |
| | |
| | |
| | |



Special Instructions:

Notes:

Description	S	M	L	XL	2XL
HPS Length	29 1/4	31 1/4	32 1/4	33 1/4	35 1/4
Width	20	22	24	26	28
waist					
Sweep					
Arm Hole Opening-STRAIGHT	10 1/2	11	11 1/2	12 1/8	12 5/8
Neck Opening	7 1/2	7 3/4	8	8 1/4	8 1/2
Front Neck Drop-HPS To Seam	4 1/2	4 3/4	5	5 1/4	5 1/2
Back Neck Drop-HPS To Seam	3/4	3/4	3/4	3/4	3/4
Sleeve Length From Shoulder Edge	8 1/2	8 3/4	9	9 1/4	9 1/2
Biceps 1" below armhole					
Sleeve Opening	7 1/2	8	8 1/2	9	9 1/2
Sleeve Cap HEIGHT					
Neck Rib Height	1	1	1	1	1
Shoulder Width	19 1/8	21	23	24 1/2	26
Shoulder Slope	1 1/2	1 1/2	1 1/2	1 1/2	1 1/2

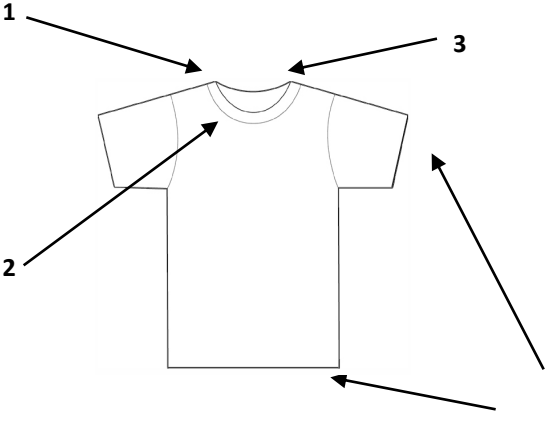
TOL +/-
1/2
1/2
1/4
1/8
1/8
1/8
1/4
1/4
1/8
1/2

OPTIMA GARMENT SPECIFICATIONS

Style # 47146 **Date: 11/13/14**

Style: Mens LONDON S/S Tee **Size: S-M-L-XL-2X-3X**

Fabric: Combed Ring Spun, 50/50 Cotton/Poly 30/1 140grams **Label:**

1	3/4" rib height	
2	Set in collar	
3	Taped shoulder to shoulder	
4	Double needle sleeve and bottom hem	

Special Instructions: **Notes:**

Description	S	(M)	L	XL	XXL	XXXL	TOL. +/-
HPS Length	28 1/4	29 3/8	30 1/2	31 1/2	32 1/2	33 1/2	1/2
Width	18	20	22	24	26	28	1/2
Arm Hole Opening	10 1/8	10 1/2	11	11 1/2	11 7/8	12	3/8
Neck Opening	6 7/8	7	7 1/8	7 1/4	7 1/2	7 3/4	1/4
Front Neck Drop-HPS To Seam	4 1/4	4 3/8	4 1/2	4 5/8	4 3/4	4 7/8	1/4
Back Neck Drop-HPS To Seam	3/4	7/8	1	1 1/8	1 1/4	3/4	1/4
Sleeve Length From Shoulder Edge	8 1/4	8 1/2	8 3/4	9	9 1/4	9 1/2	1/4
Sleeve Opening	6 1/4	6 1/2	6 7/8	7 1/4	7 5/8	7 7/8	1/4
SLOPE MEASUREMENT	2	2 1/4	2 1/2	2 3/4	3	3 1/4	1/4
Neck Rib Height	3/4	3/4	3/4	3/4	3/4	3/4	1/8
Shoulder Width	15 7/8	17 1/2	19 1/4	20 1/2	22	25	3/8
Bottom Opening	18	20	22	24	26	28	1/2
Under Arm (Armhole To Edge)	4 1/2	4 3/4	5	5 1/4	5 1/4	5 1/2	1/4

Charcoal Heather, Navy htr, Red htr, Kelly Htr, Turq Htr, Platinum Htr, Royal Htr, Graphite htr, Sky Blue Htr

Brown Htr, Indigo Black Htr, Brick Black htr, Sage Black htr, Cyan Black htr, Jade Black Htr, Violet black htr, Black Cherry Htr

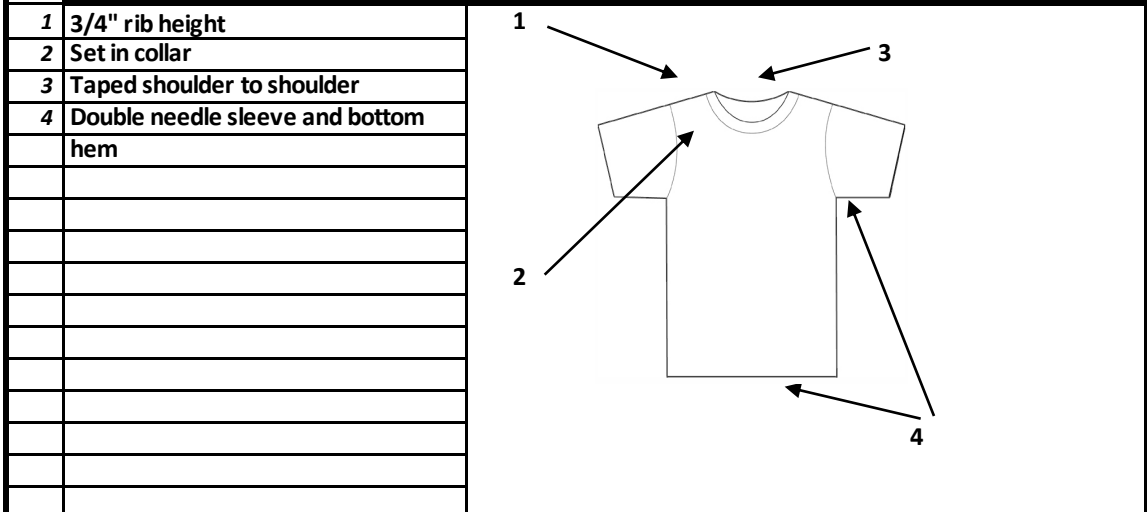
OPTIMA GARMENT SPECIFICATIONS

Style # 47151 Date: 05/13/20

Style: Mens PREMIUM SF S/S Tee **Size: XS-S-M-L-XL-2X**

Fabric:
100% Combed Ring Spun Cotton
30/1 140-150grams

Label:



Special Instructions: **Notes: *Size XS carried in select colors only.**

Description	*XS	S	(M)	L	XL	XXL	XXXL	TOL. +/-
HPS Length	26	28 1/4	29 3/8	30 1/2	31 1/2	32 1/2	33 1/2	1
Width	16	18	20	22	24	26	28	1
Arm Hole Opening	9 1/2	10 1/8	10 1/2	11	11 1/2	11 7/8	12	3/8
Neck Opening	6 5/8	6 3/4	6 7/8	7	7 1/8	7 1/4	7 1/2	3/8
Front Neck Drop-HPS To Seam	4 1/8	4 1/4	4 3/8	4 1/2	4 5/8	4 3/4	4 7/8	1/4
Back Neck Drop-HPS To Seam	5/8	3/4	7/8	1	1 1/8	1 1/4	1 1/2	1/4
Sleeve Length From Shoulder Edge	7 3/4	8 1/4	8 1/2	8 3/4	9	9 1/4	9 1/2	1/4
Sleeve Opening	6	6 1/4	6 1/2	6 7/8	7 1/4	7 5/8	7 7/8	1/4
SLOPE MEASUREMENT	1 3/4	2	2 1/4	2 1/2	2 3/4	3	3 1/4	1/4
Neck Rib Height	3/4	3/4	3/4	3/4	3/4	3/4	3/4	1/8
Shoulder Width	14 1/2	15 7/8	17 1/2	19 1/4	20 1/2	22	23 1/2	3/8
Muscle 1" from Armhole								1/4
Underarm Sleeve Seam Length	4 1/4	4 1/2	4 3/4	5	5 1/4	5 1/4	5 1/2	1/4

White, Heather Grey, Silver Grey, Sand, Royal, Navy. Red, Dark Red, Charcoal, Smoke, Army, Black

OPTIMA GARMENT SPECIFICATIONS

Style # 47832

Date: 5/29/2020

Style: Mens HEAVY S/S Tee

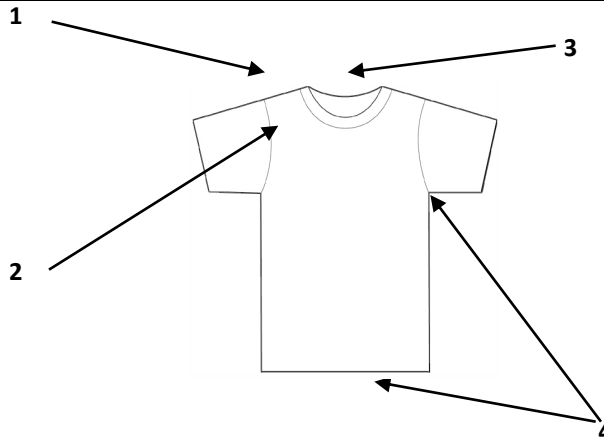
Size: S-M-L-XL-2X-3X

Fabric:

100% Cotton Open End
18/1 180-185 grams

Label:

- 1 1" rib height
- 2 Set in collar.
- 3 Taped shoulder to shoulder.
- 4 Double needle sleeve & bottom



Special Instructions:

Notes:

Description	TOL	S	(M)	L	XL	2X	3X	XS
HPS Length	1	28	29	30	31	32	33	26
Waist Width	1	18	20	22	24	26	28	16
Arm Hole Opening	1/8	8 3/4	9 3/4	10 3/4	11 1/2	12 1/2	13 1/2	7 3/4
Neck Opening	1/4	7 1/2	7 1/2	8	8	8 1/2	8 1/2	7
Front Neck Drop-HPS To Seam	1/4	3 3/4	3 3/4	4 3/4	4 3/4	4 3/4	4 3/4	3 1/2
Back Neck Drop-HPS To Seam	1/4	1	1	1	1	1	1	1
Sleeve Length From Shoulder Edge	1/4	7 1/4	7 3/4	8 1/4	8 3/4	9 1/4	9 3/4	6 3/4
Sleeve Opening	1/2	6 1/2	7	7 1/2	8	8 1/2	10	6
Neck Rib Height	1/8	1	1	1	1	1	1 1/8	1
Shoulder Width	1/2	17	19	21	23	25	27	15
Under Arm (Armhole To Edge)	1/4	4 5/8	5 1/8	5 1/8	5 1/2	5	5 5/8	4 3/8

OPTIMA GARMENT SPECIFICATIONS

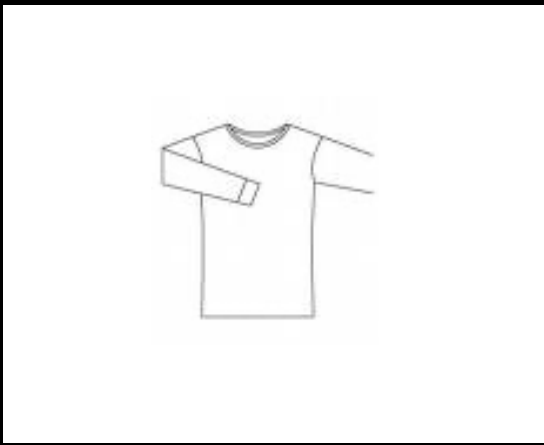
Style # _____ **Date:** 2/10/19

Style: Mens Logan Long Sleeve Tee **Size:** S-M-L-XL-2X

Fabric:
100% Carded Open End Cotton
18/1 200 grams-6.0 oz

Label:

- 1 1" rib height
- 2 Set in Collar
- 3 Taped shoulder to shoulder
- 4 Double needle sleeve and bottom
-
-
-
-
-
-
-
-
-
-
-
-
-
-
-
-
-



Special Instructions: _____ **Notes:** _____

Description	XS	S	(M)	L	XL	2X
HPS Length	25 1/2	27 1/2	29 1/2	30 1/2	31 1/2	33,5
Width	17	19	21	23	25	27
waist	17	19	21	23	24 1/2	26
Sweep	17	19	21	23	24 1/2	26
Arm Hole Opening-STRAIGHT	9 1/2	10	10 1/2	11	11 1/2	12
Neck Opening	7 1/4	7 1/4	7 1/2	7 3/4	8	8.25
Front Neck Drop-HPS To Seam	4	4 1/4	4 1/2	4 3/4	5	5,25
Back Neck Drop-HPS To Seam	3/4	3/4	3/4	3/4	3/4	0,75
Sleeve Length From Shoulder Edge	22 1/2	23 1/2	24 1/2	25 1/2	26 1/2	27,5
Biceps 1" below armhole	8 1/2	9	9 1/2	10	10 1/2	11
cuff Opening	3 1/4	3 1/2	3 1/2	3 3/4	4	4,25
cuffs/sleeve join	4 1/2	4 3/4	5	5 1/4	5 1/2	5,75
Neck Rib Height	1 1/8	1 1/8	1 1/8	1 1/8	1 1/8	1 1/8
Shoulder Width	16	18	20	22	23 1/2	26
Shoulder Slope	1 1/2	1 1/2	1 1/2	1 1/2	1 1/2	1 1/2

TOL +/-

1/2

1/2

3/8

1/4

1/4

1/4

1/4

1/4

1/8

1/4

1/4

OPTIMA GARMENT SPECIFICATIONS

Style # tbd

Date: 11/16/15

Style: Mens PREMIUM L/S Tee

Size: XS-S-M-L-XL-2X

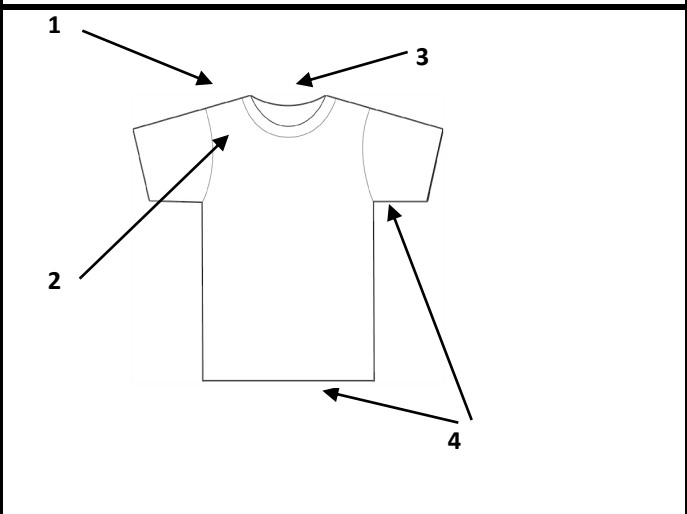
Fabric:

100% Combed Ring Spun Cotton

30/1 140-150grams

Label:

- | | |
|---|-------------------------------------|
| 1 | 3/4" rib height |
| 2 | Set in collar |
| 3 | Taped shoulder to shoulder |
| 4 | Double needle sleeve and bottom hem |
| 5 | 2X1 cuff |
| | |
| | |
| | |
| | |
| | |
| | |
| | |
| | |
| | |
| | |
| | |



Special Instructions:

Notes: *Size XS carried in select colors only.

Description	*XS	S	(M)	L	XL	XXL	XXXL	TOL. +/-
HPS Length	26	28 1/4	29 3/8	30 1/2	31 1/2	32 1/2		1/2
Width	16	18	20	22	24	26		1/2
Arm Hole Opening	8 5/8	9 1/4	9 5/8	10 1/4	10 5/8	11 1/8		3/8
Neck Opening	6 5/8	6 3/4	6 7/8	7	7 1/8	7 1/4		1/4
Front Neck Drop-HPS To Seam	4 1/8	4 1/4	4 3/8	4 1/2	4 5/8	4 3/4		1/4
Back Neck Drop-HPS To Seam	5/8	3/4	7/8	1	1 1/8	1 1/4		1/4
								1/4
Sleeve Opening	6	6 1/4	6 1/2	6 7/8	7 1/4	7 5/8		1/4
SLOPE MEASUREMENT	1 3/4	2	2 1/4	2 1/2	2 3/4	3		1/4
Neck Rib Height	3/4	3/4	3/4	3/4	3/4	3/4		1/8
Shoulder Width	14 1/2	15 7/8	17 1/2	19 1/4	20 1/2	22		3/8
Biceps	7	7 1/4	7 5/8	8	8 3/8	8 3/4		
Sleeve Length Including Cuff	24 1/2	25 1/2	26	26 1/2	27	27 1/2		
Mus Cuff Width	2	2	2	2	2	2		1/4
Cuff	3	3 1/4	3 1/2	3 3/4	4	4 1/4		
Underarm Sleeve Seam Length	17 7/8	18 3/8	18 1/2	18 7/8	19 1/4	19 5/8		1/4

OPTIMA GARMENT SPECIFICATIONS

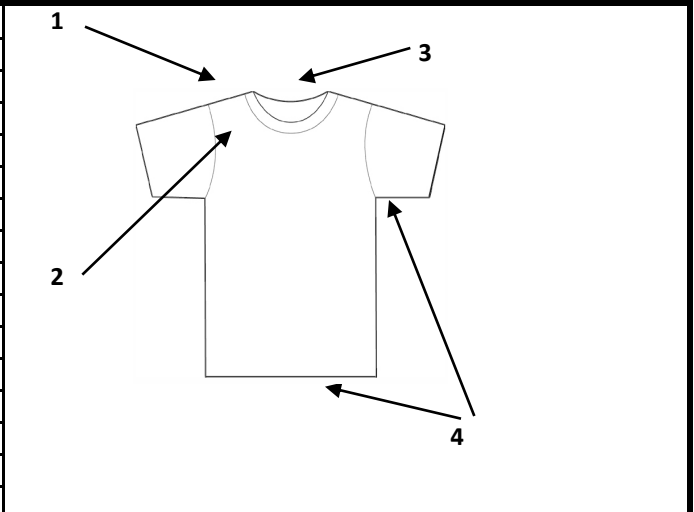
Style # 47151 **Date: 11/13/15**

Style: Mens PREMIUM SF S/S Tee **Size: XS-S-M-L-XL-2X**

Fabric:
100% Combed Ring Spun Cotton
30/1 140-150grams

Label:

- 1 3/4" rib height
- 2 Set in collar
- 3 Taped shoulder to shoulder
- 4 Double needle sleeve and bottom hem



Special Instructions:

Notes: *Size XS carried in select colors only.

Description	*XS	S	(M)	L	XL	XXL	XXXL	TOL +/-
HPS Length	26	28 1/4	29 3/8	30 1/2	31 1/2	32 1/2	33 1/2	1
Width	16	18	20	22	24	26	28	1
Arm Hole Opening	9 1/2	10 1/8	10 1/2	11	11 1/2	11 7/8	12	3/8
Neck Opening	6 5/8	6 3/4	6 7/8	7	7 1/8	7 1/4	7 1/2	3/8
Front Neck Drop-HPS To Seam	4 1/8	4 1/4	4 3/8	4 1/2	4 5/8	4 3/4	4 7/8	1/4
Back Neck Drop-HPS To Seam	5/8	3/4	7/8	1	1 1/8	1 1/4	1 1/2	1/4
Sleeve Length From Shoulder Edge	7 3/4	8 1/4	8 1/2	8 3/4	9	9 1/4	9 1/2	1/4
Sleeve Opening	6	6 1/4	6 1/2	6 7/8	7 1/4	7 5/8	7 7/8	1/4
SLOPE MEASUREMENT	1 3/4	2	2 1/4	2 1/2	2 3/4	3	3 1/4	1/4
Neck Rib Height	3/4	3/4	3/4	3/4	3/4	3/4	3/4	1/8
Shoulder Width	14 1/2	15 7/8	17 1/2	19 1/4	20 1/2	22	23 1/2	3/8
Muscle 1" from Armhole								1/4
Underarm Sleeve Seam Length	4 1/4	4 1/2	4 3/4	5	5 1/4	5 1/4	5 1/2	1/4

White, Heather Grey, Silver Grey, Sand, Royal, Navy. Red, Dark Red, Charcoal, Smoke, Army, Black