

 **Kimberly-Clark**

PROFESSIONAL

Product Catalogue New Zealand 2021

Together,
we create
exceptional
workplaces.



Scott
BRAND

Kleenex
BRAND

WYPALL
BRAND

KIMTECH
®

The Kimberly-Clark Professional™ Promise

As a trusted partner, we're here to help your business thrive in the years to come. And we'll do it, together.

**Together, we create
exceptional workplaces**



Table of Contents

Contents	2
FSC™ Certification.....	4
Folded Hand Towel.....	7
Roll Towel.....	10
Small Roll Toilet Tissue.....	12
Soft Interleaved Toilet Tissue.....	13
Jumbo Roll Toilet Tissue.....	14
Facial Tissue.....	16
Skin Care.....	18
Air Care.....	21
Personal Wiping.....	22
Single Use Wipers.....	25
Reinforced Wipers.....	27
Cloth Wipers.....	29
Heavy Duty Wipers.....	31
Microfibre Wipers.....	32
Colour-Coded Wipers.....	33
Specialty Wipers.....	34

Certification Key

MPI MPI is responsible for regulation of maintenance compounds used in certain dairy or other animal product processing premises and any references to MPI are relevant for New Zealand only.



Initiated and endorsed by the New Zealand Government, Environmental Choice operates to internationally recognised standards and principle and recognises the genuine moves made by manufacturers to reduce the environmental impacts of their products.



Ensures wood products are FSC™ certified from sustainable, responsibly managed forests. (See p4 for details)



Products are made in Australia, supporting local manufacturing and communities.



Products are made with AIRFLEX® Technology.



Products are made with HYDROKNIT® Technology.




Products are certified as FZP (Food Zone Primary) items are suitable for use in the food zone and are suitable for short term contact with food. Products are certified FZS (Food Zone Secondary) items are suitable for touching food contact surfaces but are not expected to touch food during normal conditions of use. Products are certified as SSZ (Splash or Spill Zone) items are suitable for use in food handling areas such as kitchens, production areas and processing areas, but are not suitable for coming directly into contact with food or items that will touch food.

Creating a better tomorrow

Put your confidence in our sustainable solutions

We set ambitious **sustainability** goals in key priority areas which enable us to have a lasting positive impact around the world. Our priorities and goals are informed by who we serve, what we do, and how we do it. We work together to foster innovative ideas and pursue longer-term change while striving to create social, environmental, and financial value.

 Products marked with this symbol have FSC™ certifications from manufacturing facilities around the world:



The mark of responsible forestry



The mark of responsible forestry



The mark of responsible forestry



The mark of responsible forestry



The mark of responsible forestry



The mark of responsible forestry

AUSTRALIA - C101606
 KLEENEX® Facial Tissue CODES: 4715, 4720, 4721
 SCOTT® Facial Tissue CODE: 4725
 KLEENEX® Soft Interleaved Toilet Tissue CODE: 4322
 SCOTT® Soft Interleaved Toilet Tissue CODE: 4321
 KLEENEX® Toilet Tissue CODE: 4735, 4737
 SCOTT® Toilet Tissue CODE: 5741
 KLEENEX® Optimum Towel CODE: 4456
 SCOTT® Optimum Towel CODES: 4455, 4457
 KLEENEX® Compact Towel CODES: 4440, 4444, 5855
 SCOTT ESSENTIAL® Ultraslim Towel CODE: 38000

MALAYSIA - C114474
 SCOTT ESSENTIAL® Jumbo Roll CODE: 38004
 SCOTT® Compact Jumbo Roll CODE: 5748

USA - C103572
 SCOTT® Interfold Towel CODE: 1742

KOREA - C103572
 KLEENEX® Multifold Towel CODE: 1890
 SCOTT® Multifold Towel CODE: 13207
 SCOTT® Hard Roll Towel CODES: 1005, 6668
 SCOTT® Slimroll Towel CODES: 12388, 6698
 SCOTT ESSENTIAL® Multifold Towel CODE: 38002

EUROPE - C013545
 KLEENEX® Hard Roll Towel CODE: 6765
 WYPALL® Reach® L10 Wiping Paper CODE: 6222

TAIWAN - C106784
 KLEENEX® Compact Jumbo Roll CODE: 5749
 KLEENEX® Centre Pull Bath Tissue CODE: 25252

TAIWAN - C007568
 SCOTT ESSENTIAL® Toilet Tissue CODE: 38003

for more information: kcprofessional.com.au/sustainability



Together, we
create **exceptional**
washroom experiences.

New Zealand's trusted brands.

We promise to deliver you marketing leading solutions that reduce our environmental impact and help you reduce yours.

Kimberly-Clark Professional™ is proud to say that 100% of the fibre used in our Australian made tissue and towel products is sourced from FSC™ Certified or FSC™ Controlled or Reclaimed Wood sources.

Scott
Brand

Kleenex
BRAND

Over 100 years of hand towel expertise, all in one place.

At KIMBERLY-CLARK PROFESSIONAL™, we understand our customers and the industries in which they work.

Whatever your need, we've got it covered.

Let us walk you through it.



The superior choice.

Comfort, softness and drying performance.

The original and still the best.



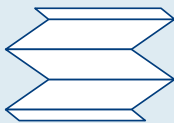
The practical choice.

Great performance and great cost in use.

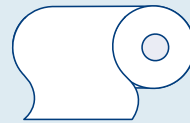
SCOTT® offers extra value for those high-use areas.

Folded or rolled?

Typically our hand towels come in these two types.



Folded Hand Towels are your best choice for comfort and hygiene.



Rolled Hand Towels are best for busy spaces full of busy people

Optimum Towel Systems

Optimum Folded Towel system provides a larger paper towel with strength and absorbency

All KLEENEX® and SCOTT® Optimum Towels are FSC™ Certified

Our high capacity lockable dispensers are easy to use and efficient for your cleaning staff



KLEENEX®
Optimum Towel
 White, 30.5cm x 24cm,
 120 towels/pack,
 20 packs/case.
ORDER CODE: 4456



Kleenex®



SCOTT®
Optimum Towel
 White, 24cm x 24cm,
 150 towels/pack,
 16 packs/case.
ORDER CODE: 4455



Scott®



SCOTT ESSENTIAL®
Ultraslim Towel
 White, 24cm x 21cm
 150 towels/pack,
 16 packs/case,
ORDER CODE: 38000



Scott®
Essential®

Dispensers



○ **70250**
AQUARIUS® Optimum
 Towel Dispenser
 ABS plastic, lockable
 290 x 512 x 104mm
 Compatible with
4455, 4456, 4457, 38000.



○ **4944** ● **4950**
METAL/STAINLESS
 Optimum Towel
 Dispenser, lockable
 258 x 536 x 85 mm
 Compatible with
4455, 4456, 4457, 38000.

MPI

(4456) Dairy: MPI approved for use in farm dairies. MPI recognized for use in dairy processing.
 Non Dairy: MPI Approved C 44 (All animal product except dairy).

(4455) Dairy: MPI approved for use in farm dairies. MPI recognized for use in dairy processing.

Compact Hand Towel

Compact towel and dispenser package ideal for tighter washroom spaces

All KLEENEX® and SCOTT® compact paper towels are FSC™ certified

Our high capacity lockable dispensers are easy to use and efficient for your cleaning staff



KLEENEX®
Compact Towel
 White, 29.5cm x 19cm,
 90 towels/pack,
 24 packs/case.
ORDER CODE: 4440



SCOTT® Control™
Compact Towel
 White, 29.5cm x 19cm
 110 towels/pack,
 16 packs/case.
ORDER CODE: 5855



Dispensers



○ **70240**
AQUARIUS® Compact
Towel Dispenser
 ABS plastic, lockable
 239 x 380 x 81 mm
Compatible with
4440, 5855.



○ **4969** ● **4970**
METAL/STAINLESS
Compact Towel
Dispenser, lockable
 214 x 467 x 60 mm
Compatible with
4440, 5855.

MPI

(4440) Dairy: MPI approved for use in farm dairies. MPI recognized for use in dairy processing. Non Dairy: MPI Approved C 44 (All animal product except dairy).

(5855) Dairy: MPI approved for use in farm dairies. MPI recognized for use in dairy processing.

Multifold & Executive Hand Towel

Range of towels and dispensers to suit a variety of washroom needs

The majority of KLEENEX® and SCOTT® hand towels are FSC™ Certified

High capacity system is designed to minimise run-outs and maintenance time



KLEENEX®
Multifold Towel
 White, 24cm x 23.5cm
 150 towels/pack,
 16 packs/case. **Target**
40% recycled fibre*
ORDER CODE: 1890



SCOTT®
Multifold Towel
 White, 24cm x 23.5cm
 250 towels/pack,
 16 packs/case. **Target**
70% recycled fibre*
ORDER CODE: 13207



SCOTT®
Interfold Towel
 White, 26.5cm x 23.5cm
 250 towels/pack,
 16 packs/case.
55% recycled fibre
ORDER CODE: 1742



SCOTT ESSENTIAL®
Multifold Towel
 White, 24cm x 19.5cm
 250 towels/pack,
 16 packs/case. **Target**
70% recycled fibre*
ORDER CODE: 38002



* recycled fibre content may vary

Dispensers



○ **70230**
AQUARIUS®
 Double Multifold
 Towel Dispenser
 ABS plastic, lockable
 294 x 451 x 120mm
 Compatible with
1890, 13207, 38002.



○ **70220**
AQUARIUS® Multifold
 Towel Dispenser
 ABS plastic, lockable
 280 x 232 x 116mm
 Compatible with
1890, 13207, 38002.



○ **4943**
Interfold Towel
 Dispenser
 White enamel steel,
 lockable
 267 x 285 x 145mm
 Compatible with
1742.

MPI

(1890) Dairy: MPI approved for use in farm dairies. MPI recognized for use in dairy processing.

Hard Roll Towel Solutions

Hard Roll Towel

Ideal for high traffic areas
 Suitable for busy work environments including hospitality, education and food manufacturing where blue towel is recognised as hygienic fit

Touchless dispensers for superior hygiene and image



KLEENEX®
Hard Roll Towel
 White, 130m /roll,
 2 ply, 6 rolls/case.
38% recycled fibre
ORDER CODE: 6765



SCOTT®
Hard Roll Towel
 White, 305m /roll,
 1 ply, 6 rolls/case.
Target 70% recycled fibre*
ORDER CODE: 1005



SCOTT®
Hard Roll Towel
 Blue, 305m /roll,
 1 ply, 6 rolls/case,
 individually wrapped.
Target 70% recycled fibre*
ORDER CODE: 6668



* recycled fibre content may vary

Dispensers



○ **7377**
SCOTT® Hard Roll
 Towel Dispenser
 ABS plastic, lockable
 307 x 382 x 243mm
 Compatible with
1005, 6668, 6765.



○ **69590**
AQUARIUS® Hard Roll
 Towel Dispenser
 ABS plastic, lockable
 326 x 430 x 241mm
 Compatible with
1005, 6668, 6765.



MPI
(6765, 1005) Dairy: MPI approved for use in farm dairies.
 MPI recognized for use in dairy processing.

SCOTT SLIMROLL® Hand Towel

High capacity system is designed to minimise run-outs and reduce maintenance time

Compact dispenser for reduced washroom footprint

Multi-Use Cleaning Towel

With tough wave texture for strength and durability whether wet or dry



SCOTT SLIMROLL® Hand Towel
White, 176m/roll,
6 rolls/case. **Target**
70% recycled fibre*
ORDER CODE: 12388



SCOTT SLIMROLL® Hand Towel
Blue, 176m/roll
6 rolls/case, individually
wrapped. **Target**
70% recycled fibre*
ORDER CODE: 6698



KLEENEX® VIVA® Multi-Use Cleaning Towel
White, 60 sheets/roll,
6 twin packs/case.
ORDER CODE: 44301



* recycled fibre content may vary

Dispensers



○ **7957**
SCOTT® Slimroll
Towel Dispensers
ABS plastic, lockable
298 x 355 x 191mm
Compatible with
6698, 12388.



○ **69530**
AQUARIUS® Slimroll
Towel Dispenser
ABS plastic, lockable
318 x 343 x 191mm
Compatible with
6698, 12388.

MPI
(44301) Dairy: MPI approved for use in farm dairies. MPI recognized for use in dairy processing.
Non Dairy: MPI Approved C 44 (All animal product except dairy).

(12388) Dairy: MPI approved for use in farm dairies. MPI recognized for use in dairy processing.

Small Roll Toilet Tissue Solutions

KLEENEX® Toilet Tissue

Premium quality tissue, trusted for softness, strength and absorbency

Available in a range of roll lengths

SCOTT® Toilet Tissue

For quality and value

SCOTT ESSENTIAL® Toilet Tissue

For high traffic washrooms where efficiency is valued



KLEENEX® Toilet Tissue

White, 2 ply,
400 sheets/roll,
48 rolls/case.

ORDER CODE: 4735



Kleenex

KLEENEX® Executive Toilet Tissue

White, 2 ply,
300 sheets/roll,
48 rolls/case.

ORDER CODE: 4737



SCOTT®

Toilet Tissue

White, 2 ply,
400 sheets/roll,
48 rolls/case.

ORDER CODE: 5741



Scott

SCOTT ESSENTIAL®

Toilet Tissue

White, 2ply,
700 sheets/roll,

12 x four roll packs /case.

ORDER CODE: 38003



Scott
Essential

Soft Interleaved Toilet Tissue

Helps reduce cross contamination with its one-at-a-time dispensing system

All KLEENEX® and SCOTT® toilet tissue is FSC™ Certified

High capacity (up to 1100 sheets) top up system is designed for easy maintenance

Ideal for medium to high traffic washrooms



KLEENEX® Soft Interleaved Toilet Tissue

White, 2 ply,
250 sheets/pack
36 packs/case.

ORDER CODE: 4322



SCOTT® Soft Interleaved Toilet Tissue

White, 1 ply,
500 sheets/pack
36 packs/case.

ORDER CODE: 4321



COSTSAVER* Interfold Toilet Tissue

White, 1 ply,
200 sheets/pack
72 packs/case.

ORDER CODE: 4301



Dispensers



○ **69460**
AQUARIUS®
Interleaved Toilet
Tissue Dispenser
ABS plastic, lockable
169 x 338 x 123 mm
Compatible with
4322, 4321.



○ **69900**
AQUARIUS® Twin
Interleaved Toilet
Tissue Dispenser
ABS plastic, lockable
317 x 407 x 147 mm
Compatible with
4322, 4321.



○ **4930**
COSTSAVER*
Dispenser
White enamel steel,
lockable
142 x 241 x 43 mm
Compatible with
4301.



○ **8921**
Windows Dispenser
ABS plastic, lockable
141 x 309 x 142 mm
Compatible with
4322, 4321.

Jumbo Roll Toilet Tissue Solutions

Jumbo Roll Toilet Tissue

Jumbo roll tissue system is designed to minimise run-outs and maintenance time

Ideal for medium to high traffic bathrooms

Choice of 2 ply KLEENEX® or 1 ply SCOTT® tissue offers quality and value

All KLEENEX® and SCOTT® jumbo roll toilet tissue is FSC™ Certified



KLEENEX® Toilet Tissue
Compact Jumbo Roll
 White, 2 ply,
 300m/roll
 6 rolls/case.
ORDER CODE: 5749



SCOTT® Toilet Tissue
Compact Jumbo Roll
 White, 1 ply,
 600m/roll,
 6 rolls/case.
ORDER CODE: 5748



SCOTT ESSENTIAL® Jumbo Roll Toilet Tissue
 White, 2ply,
 300m/roll,
 8 rolls/case.
100% recycled
ORDER CODE: 38004



Dispensers



○ **70260**
 AQUARIUS® Jumbo Roll Toilet Tissue Dispenser, ABS plastic, lockable
 278 x 285 x 144mm
 Compatible with
5748, 5749, 38004.



○ **70210**
 AQUARIUS® Twin Jumbo Roll Toilet Tissue Dispenser
 ABS plastic, lockable
 521 x 294 x 126 mm
 Compatible with
5748, 5749, 38004.



○ **4972**
 Stainless Steel Jumbo Roll Toilet Tissue Dispenser, lockable
 272 x 280 x 122mm
 Compatible with
5748, 5749, 38004.

Centrefeed Toilet Tissue

Unique twin roll inner door system design* helps make tissue loading easier

Designed for hygiene, efficiency and sustainability

Users only touch the sheets they use with fully enclosed tissue rolls

High capacity twin roll system holds 500 metres when it is fully loaded

Controlled single sheet dispensing helps reduce usage and waste

Hygienic dispenser, one-wipe-clean with no dirt traps

The ideal solution for inclusive washroom design. Compliant with Australian Standards for accessible and ambulant facilities.



KLEENEX®
Centre Pull Bath Tissue
 White, 2 ply,
 250m/roll
 12 rolls/case.
ORDER CODE: 25252



Kleenex™

Dispensers



○ **7186**
KIMBERLY-CLARK
PROFESSIONAL™ Twin
 Centre Pull Bathroom
 Tissue Dispenser
 ABS plastic
 274 x 464 x 133 mm
Compatible with
25252.



Compliant with **Australian Standard AS1428.1** General requirements for access when installed correctly

*PCT patent application PCT US2020/038952 pending. AU and CN to be covered

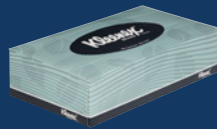
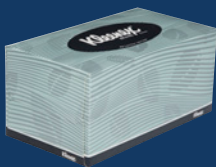
Facial Tissue Solutions

Facial Tissue

All KLEENEX® and SCOTT® brand facial tissues are FSC™ certified

The stylish pack designs of premium quality tissues enhance the appearance of the workplace

Finger tab for easy opening with lint guard to protect tissue



KLEENEX®
Facial Tissue
White, 2 ply,
200 tissues/pack,
24 packs/case.
ORDER CODE: 4715



KLEENEX®
Facial Tissue
White, 2 ply,
100 tissues/pack,
48 packs/case.
ORDER CODE: 4720



SCOTT®
Facial Tissue
White, 2 ply,
100 tissues/pack,
48 packs/case.
ORDER CODE: 4725



Dispensers



● **4993**
Chrome Facial
Tissue Dispenser,
lockable
269 x 60 x 132mm
Compatible with
4720, 4725.

Skin Care Solutions that help improve Hand Hygiene.

At KIMBERLY-CLARK PROFESSIONAL™, we have always understood the importance of proper hand hygiene in the workplace.

Now, more than ever, we are coming to understand the vital role it plays in our health and well being.

Consider your hand hygiene throughout your working day...



Everyday, Frequent Skin Care Solutions

Premium quality formulas are an ideal hand hygiene solution for workplace washrooms

High capacity cartridges are easy to load and designed to reduce janitorial servicing

Hygienically sealed cartridges to help prevent contamination and protect cleanser prior to use

Easy to use single handed push or touchless dispensers



KLEENEX® Everyday Use Hand Cleanser
1000ml cartridge,
6 cartridges/case.
ORDER CODE: 6331

KLEENEX® Frequent Use Hand Cleanser
1000ml cartridge,
6 cartridges/case.
ORDER CODE: 6333

KLEENEX® Luxury Foam Fragrance Free Frequent Use Hand Cleanser
1000ml cartridge,
6 cartridges/case.
ORDER CODE: 6342

SCOTT Luxury Foam Fragrance and Dye Free Skin Cleanser
1200ml cartridge,
2 cartridges/case.
ORDER CODE: 91591

SCOTT Luxury Foam Skin Cleanser with Moisturisers
1000ml cartridge,
6 cartridges/case.
ORDER CODE: 12552



Dispensers



○ **69480**
AQUARIUS® Skin Care Dispenser
ABS plastic, lockable
116 x 247 x 114 mm
Compatible with
6331, 6333, 6342, 12552.



○ **92147** ● **11329**
KCP WINDOWS™ Electronic Touchless Dispenser
ABS plastic, lockable
184 x 291 x 102mm
Compatible with
91591.



Liquid Formula

Foam Formula

MPI

(6331/6342/91591/12552) Dairy: MPI approved for use in farm dairies. MPI recognized for use in dairy processing.

(12552 /6333) Non Dairy: MPI Approved C 52 (All animal product except dairy).

(6342/91591) Non Dairy: MPI Approved C 51 (All animal product except dairy).

Hand Sanitiser Solutions

KLEENEX® Alcohol Foam Hand Sanitisers

Fragrance and dye free formulation kills up to 99.999% of germs

Dermatologically tested formula contains aloe vera and skin humectant

No water required



KLEENEX® Alcohol Foam Hand Sanitiser
1000ml cartridge,
fragrance and dye free
6 cartridges/case.
ORDER CODE: 6492



Kleenex



KLEENEX® Alcohol Foam Hand Sanitiser
1200ml cartridge,
fragrance and dye free
4 cartridges/case.
ORDER CODE: 6493



Dispensers



○ **69480**
AQUARIUS® Skin Care Dispenser
ABS plastic, lockable
116 x 247 x 114 mm
Compatible with
6492.



○ **92147** ● **11329**
KCP WINDOWS™ Electronic Touchless Dispenser, ABS plastic, lockable
184 x 291 x 102mm
Compatible with
64934.



● **11430**
KLEENEX® Sanitiser Floor Stand
450 x 1460 x 450mm
Compatible with
92147, 11329.

MPI

(6492/6493) Dairy: MPI approved for use in farm dairies.
MPI recognized for use in dairy processing.
Non Dairy: MPI Approved C 52 (All animal product except dairy).



Foam Formula

Hair & Body Wash

Hygienically sealed cartridges to help prevent contamination

Industrial Skin Care

Improved solvent free formula with walnut shell is tough on soil, gentle on skin

(While processing is undertaken to remove any trace elements of the meat of the walnut, we cannot guarantee that there will no trace elements of walnuts in the product. Those who are allergic to walnuts should avoid using the product.)



KLEENEX® Hair & Body Shower Wash
1000ml cartridge,
6 cartridges/case.
ORDER CODE: 6332



SCOTT Luxury Foam Hair & Body Wash
1000ml cartridge,
6 cartridges/case.
ORDER CODE: 11553



KIMCARE® Industrie Force Solvent Free Hand Cleaner
3500ml cartridge,
2 cartridges/case.
ORDER CODE:9535



Dispensers



○ **69480**
AQUARIUS® Skin Care Dispenser
ABS plastic, lockable
116 x 247 x 114 mm
Compatible with
11553, 6332.



● **4363**
KCP Push Dispenser
ABS plastic
264 x 455 x 150mm
Compatible with
9535.



Liquid Formula

Foam Formula

MPI

(11553) Dairy: MPI approved for use in farm dairies. MPI recognized for use in dairy processing.
Non Dairy: MPI Approved C 52 (All animal product except dairy).

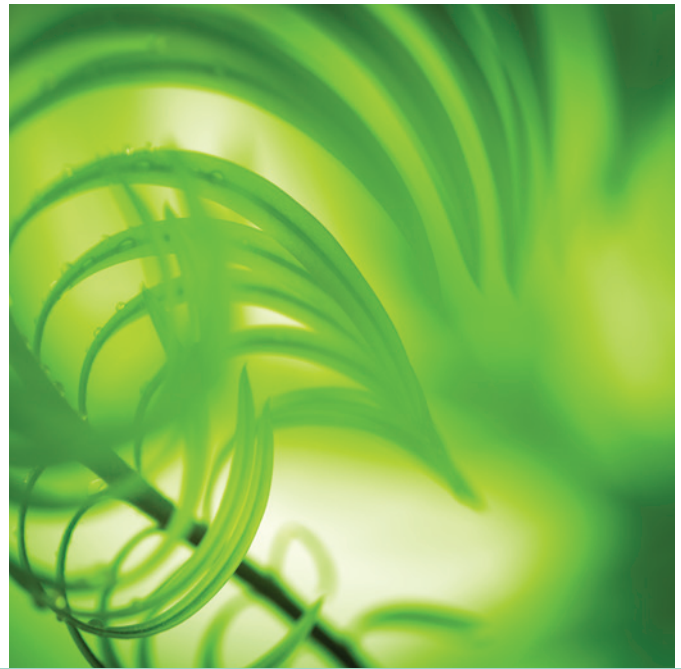
(6332) Dairy: MPI approved for use in farm dairies. MPI recognized for use in dairy processing.

KIMCARE® MICROMIST® Air Care

Neutralises unpleasant odours

Each refill lasts up to 90 days, designed to minimise maintenance, saving time and money

The easy to program dispenser allows you to adjust the system to control operation only when needed



KIMCARE®
Fresh Linen
Fragrance Refill
12 cans/case.
ORDER CODE: 6890

KIMCARE®
Citrus Splash
Fragrance Refill
12 cans/case.
ORDER CODE: 6891

KIMCARE®
Morning Air
Fragrance Refill
12 cans/case.
ORDER CODE: 6894

KIMCARE® Fragrance
Preference Pack
2 refills of each fragrance,
10 cans/case.
ORDER CODE: 6895



Dispensers



○ **9600**
MICROMIST® Air Care
Dispenser
ABS plastic.
keyless locking.
84 x 168 x 50mm

Compatible with
All codes.

KLEENEX® Antibacterial Wet Wipes

Soft and strong antibacterial wipes for gentle but hygienic clean, solution contains tea tree extract and kills 99.9% of bacteria

Resealable pack to lock in moisture

Ideal for on the go and safe for children

KLEENEX® Soft Wipers

Soft wipers

Suitable for personal wiping and drying



KLEENEX®
Antibacterial Wet Wipes
15 wipes/pack
7 packs/case,
20cm x 13.9cm
ORDER CODE: 21287



KLEENEX® Soft Wipers
60 wipes/pack
12 packs/case,
30cm x 33cm
ORDER CODE: 94127

Together, we create exceptional workplaces.



KIMBERLY-CLARK PROFESSIONAL™
is a leading global supplier of reliable, high
performing wiping solutions.

We provide innovative, high quality products,
that make an efficient and positive difference
in all workspaces, as reflected by industry
accreditations.

Sustainability is integral to the way we
design, manufacture and transport our
products - reducing waste and improving
operating efficiency.

WYPALL®
BRAND

KIMTECH®

Creating a **more hygienic workplace** doesn't stop at the washroom

Placing hand sanitiser and signage in offices and common areas is a step in the right direction. But studies show it simply isn't enough to make a real impact. Targeting "hot spots" with hand and surface hygiene, is a key step toward reducing the spread of germs. Objects that are touched by lots of people throughout the day – such as doorknobs, elevator buttons and copiers – should be cleaned and disinfected daily in order to help break the chain of germ transmission.



Cleaning

removes germs, dirt, and impurities from surfaces or objects. Cleaning works by using soap (or detergent) and water to physically remove germs from surfaces. This process **does not necessarily kill germs**, but by removing them, it lowers their numbers and the risk of spreading germs.



Sanitising

lowers the number of **germs** on surfaces or objects to a safe level, as judged by public health standards or requirements. This process works by either cleaning or disinfecting surfaces or objects to lower the risk of spreading germs..



Disinfecting

kills germs on surfaces or objects. Disinfecting works by using **chemicals to kill germs** on surfaces or objects. This process does not necessarily clean dirty surfaces or remove germs, but by killing germs on a surface after cleaning, it can further lower the risk of spreading germs.

WYPALL® REACH™ Centrefeed System

FEATURES & BENEFITS

- Designed to help prevent transmission of foodborne bacteria caused by handling of exposed rolls during food preparation
- Good for space restricted environments with a convenient wall mounted bracket for storage
- High image dispenser - complements front of house
- Reduces paper consumption by 18%¹

SUITABLE FOR

- Food and hygiene applications
- Service, retail and front of house



WYPALL® L10 Wiping Paper
 White, 1 ply, 38cm x 18.3cm,
 430 wipers/roll,
 6 x 163m rolls/case,
100% recycled fibre.
ORDER CODE: 6222



WYPALL® L10 Wiping Paper
 Blue, 1 ply, 38cm x 18.3cm,
 280 wipers/roll,
 6 x 106m rolls/case,
100% recycled fibre.
ORDER CODE: 6220



Dispensers



6221
 WYPALL® REACH™
 Centrefeed Dispenser
 254 x 180 x 224mm
 Compatible:
6222, 6220.



Wall bracket and nozzles included

Black nozzle:  Red nozzle:  **6222.**



1. Based on the Sapio Research August 2018. Actual consumption may vary depending on different circumstances.

Single Use Wiper Solutions

WYPALL® L10/L20

Single Use Wipers

For light everyday wiping and drying tasks

FEATURES & BENEFITS

- 1 ply tissue wiper
- Single sheet dispensing so users only touch the sheet they take to help reduce the risk of cross contamination

SUITABLE FOR

- Wiping up light weight spills
- Lower cost hygienic hand drying alternative



WYPALL® L10
Roll Control
Centrefeed Wiper
 White, 1 ply,
 18cm x 38cm,
 300m, 790 wipers/roll,
 4 rolls/case.

ORDER CODE: 94125



WYPALL® L10
Roll Control
Centrefeed Wiper
 Blue, 1 ply,
 18cm x 38cm, 300m,
 790 wipers/roll,
 4 rolls/case.

ORDER CODE: 94126



WYPALL® L10
Heavy Duty
Centrefeed Wipers,
 White, 1 ply,
 20cm x 38cm, 300m,
 790 wipers/roll,
 4 rolls/case.

ORDER CODE: 94122



WYPALL® L20
Heavy Duty
Centrefeed Wipers,
 White, perforated 2 ply,
 20cm x 38cm, 165m,
 435 wipers/roll,
 4 rolls/case.

ORDER CODE: 94124



WYPALL®
 BRAND

Dispensers



○ **70180** ● **71810**
AQUARIUS® Roll
 Control Centrefeed
 Wiper Dispenser
 ABS plastic, lockable
 275 x 278 x 228mm

Compatible:
94125, 94126.



7087
KCP Centrefeed
Dispenser
 ABS plastic, lockable
 256 x 360 x 270mm

Compatible:
94122.



(94124/94125) Dairy: MPI approved for use in farm dairies.
 MPI recognized for use in dairy processing.
Non Dairy: MPI Approved C 44 (All animal product except dairy).

(94122) Dairy: MPI approved for use in farm dairies.
 MPI recognized for use in dairy processing.

Reinforced Wiper Solutions

WYPALL® X50 Reinforced Wipers

Versatile and efficient for light-duty wiping tasks

- Single Sheet wiper format
- Made with 4 ply of tissue and 1 of scrim, provides good strength and absorption
- Scrim reinforcing provides greater durability wet or dry
- 4 ply tissue traps dirt and absorbs liquid fast



WYPALL® X50
Single Sheet Wipers
Blue, 32.5cm x 49cm,
250 wipers/case.
ORDER CODE: 4199



WYPALL® X50
Single Sheet Wipers
White, 32.5cm x 49cm,
400 wipers/case.
ORDER CODE: 4201



WYPALL® X50
Single Sheet Wipers
White, 32.5cm x 24.5cm,
250 wipers/case,
ORDER CODE: 4202



WYPALL® X50
POP-UP Wipers
White, 24cm x 42cm,
160 wipers/box,
4 boxes/case.
ORDER CODE: 4204



WYPALL® X50
Single Sheet Wipers
24cm x 42cm,
75 wipers/pack,
8 packs/case.
ORDER CODE: 4208 ○
ORDER CODE: 4209 ●



Dispensers



92170
KCP Single Sheet
Wiper Dispenser
ABS plastic, lockable
275 x 229 x 120mm
Compatible:
4208, 4209.



4906
KCP Wall Mount
Dispenser, Steel
273 x 203mm
Compatible: **4204.**

MPI

(All codes) Dairy: MPI approved for use in farm dairies.

MPI recognized for use in dairy processing.

(All codes) Non Dairy: MPI Approved C 44 (All animal product except dairy).

WYPALL® X50 Reinforced Rolls

Versatile and efficient for light-duty wiping tasks

- Roll wiper format
- Made with 4 ply of tissue and 1 of scrim, provides good strength and absorption
- Scrim reinforcing provides greater durability wet or dry
- 4 ply tissue traps dirt and absorbs liquid fast



WYPALL® X50 Large Roll Wipers
Blue, 49cm x 70m, 70m roll, 3 rolls/case.
ORDER CODE: 4193



WYPALL® X50 Small Roll Wipers
Blue, 24.5cm x 70m, 70m roll, 4 rolls/case.
ORDER CODE: 4194



WYPALL® X50 Large Roll Wipers
White, 49cm x 70m, 70m roll, 3 rolls/case.
ORDER CODE: 4197



WYPALL® X50 Small Roll Wipers
White, 24.5cm x 70m, 70m roll, 4 rolls/case.
ORDER CODE: 4198



Dispensers



4915
KCP Small Roll Dispenser
White enamel steel
265 x 198 x 175mm
Compatible:
4194, 4198.



4917
KCP Large Roll Dispenser
White enamel steel
525 x 198 x 175mm
Compatible:
4193, 4197.

MPI

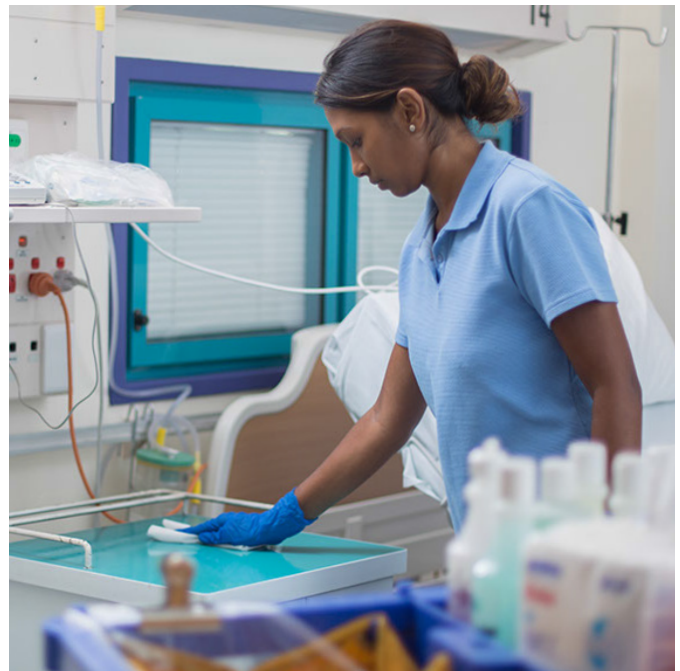
(All codes) Dairy: MPI approved for use in farm dairies.
MPI recognized for use in dairy processing.

Multipurpose Cloth Wipers

WYPALL® X60 Multipurpose Wipers

Versatile and durable for general wiping tasks

- Made from HYDROKNIT® material for absorption and versatile performance
- Blue colour is easily visible and identifiable in food production
- Use for general cleaning tasks, soaking up light spills
- Great replacement for waste rag



**WYPALL® X60
POP-UP Wipers**
White, 23cm x 42.5cm,
130 wipers/box,
10 boxes/case.
ORDER CODE: 94222



**WYPALL® X60
Small Roll Wipers**
Blue, 24.5cm x 42cm,
80 wipers/roll,
6 rolls/case.
ORDER CODE: 94223



**WYPALL® X60
Single Sheet
Quarterfold Wipers**
White, 28cm x 35cm,
100 wipers/pack,
8 packs/case,
ORDER CODE: 94224



**WYPALL® X60
POP-UP Poly Wipers**
White, 23cm x 42.5cm,
115 wipers/bag,
12 bags/case.
ORDER CODE: 94333



WYPALL®
BRAND

Dispensers



4908
KCP Quarter Fold
Wiper Dispenser
Clear acrylic
185 x 245 x 155mm
Compatible: **94224**.



92170
KCP Single Sheet Wiper
Dispenser, ABS plastic,
lockable
275 x 229 x 120mm
Compatible: **94333**.



4906
KCP Wall Mount Dispenser
Steel, 273 x 203mm
Compatible: **94222**.

WYPALL® X70 Cloth Wipers

Designed for medium-duty tasks

- Made from HYDROKNIT® material for absorption and versatile performance
- Versatile and durable for medium duty tasks
- Rinse and reuse – designed to reduce waste and cost
- Clean and consistent cloth every time
- Suitable for wiping up liquid and oil spills, cleaning dirt and debris



WYPALL® X70
Centrefeed Roll
White, 22.5cm x 38cm
220 wipers/roll,
4 rolls/ case.
ORDER CODE: 94178



WYPALL®
BRAND

Dispensers



7087
KCP Centrefeed
Dispenser
ABS plastic, lockable
256 x 360 x 270mm
Compatible: **94178.**



Heavy Duty Cloth Wipers

WYPALL® X80 Heavy Duty Wipers

Designed for tough maintenance and wiping tasks.

- Made from HYDROKNIT® material for absorption and versatile performance
- Designed to be durable enough to clean rough surface without easily falling apart
- Good tear resistance
- Rinse and reuse – designed to reduce waste and cost
- Clean and consistent cloth every time
- Portable, convenient point-of-use options enhance productivity
- Suitable for wiping away grease and oil and absorbing heavy soiling



**WYPALL® X80 Wipers
Perforated Jumbo Roll**
Blue, 32cm x 34cm,
475 wipers/roll,
1 roll/case.
ORDER CODE: 41043



**WYPALL® X80 Wipers
Perforated Jumbo Roll**
White, 31cm x 34.5cm,
540 wipers/roll,
1 roll/case.
ORDER CODE: 94173



**WYPALL® X80 Wipers
Single Sheet**
White, 31.5cm x 42.5cm,
150 wipers/case.
ORDER CODE: 94176



**WYPALL®
BRAND**

Dispensers



4905
KCP Jumbo Roll
Dispenser Trolley
Steel
460 x 933 x 695mm
Compatible:
41043, 94173.



4951
KCP Jumbo Roll
Dispenser Wall Mount
Steel
420 x 570 x 565mm
Compatible:
41043, 94173.

MPI

(41043) Dairy: MPI approved for use in farm dairies.
MPI recognized for use in dairy processing.
Non Dairy: MPI Approved C 44 (All animal product except dairy).

WYPALL® Microfibre Cloths

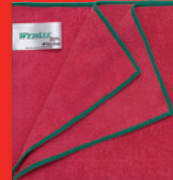
Designed for cleaning professionals.

FEATURES & BENEFITS

- Designed for repeat use, can be washed and reused
- Designed to lift and trap surface dirt – for faster, more efficient cleaning

SUITABLE FOR

- Colour coded for task segregation, helps reduce risk of cross-contamination.
- Green cloth designed for streak-free finish on glass surfaces



**WYPALL®
Microfibre Cloths**
Yellow, 40cm x 40cm,
6 cloths/pack,
4 packs/case.
ORDER CODE: 83610

**WYPALL®
Microfibre Cloths**
Blue, 40cm x 40cm,
6 cloths/pack,
4 packs/case.
ORDER CODE: 83620

**WYPALL®
Microfibre Cloths**
Red, 40cm x 40cm,
6 cloths/pack,
4 packs/case.
ORDER CODE: 83980

**WYPALL®
Microfibre Cloths**
Green, 40cm x 40cm,
6 cloths/pack,
4 packs/case.
ORDER CODE: 83630



Colour Coded Wiping Solutions

WYPALL® Wipers

Colour Coded Wipers for task segregation.

Colour Coding Guide for reusable cleaning equipment and cleaning only:

- Blue cloth wiper for use in general cleaning and dusting areas
- Green cloth wiper for use in food services, food preparation and catering areas
- Red cloth wiper for use in washrooms, toilet areas and dirty utility rooms
- Yellow cloth wiper for janitorial use on surfaces in the general areas of the hospital
- White cloth wiper for janitorial use on general surfaces* in operating theatres. (*Not intended for use on medical equipment or in relation to bodily fluids.)



WYPALL® Wipers
Green, 34cm x 45m,
106 wipers/roll,
6 rolls/case.
ORDER CODE: 94142



WYPALL® Wipers
Yellow, 34cm x 45m,
106 wipers/roll,
6 rolls/case.
ORDER CODE: 94148



WYPALL® Wipers
Blue, 34cm x 45m,
106 wipers/roll,
6 rolls/case.
ORDER CODE: 94152



WYPALL® Wipers
Red, 34cm x 45m,
106 wipers/roll,
6 rolls/case.
ORDER CODE: 94162



WYPALL® Wipers
White, 32.5cm x 32cm,
100 wipers/box,
6 boxes/case.
ORDER CODE: 94145



WYPALL®
BRAND

Dispensers



4926
KCP Roll Wiper
Dispenser, Steel
335W x 155Dmm
Compatible:
**94142, 94148,
94152, 94162.**



4929
KCP White Enamel
Steel Dispenser,
lockable
380 x 220 x 207mm
Compatible
94142, 94148,



MPI

(94142) Non Dairy: MPI Approved C 44 (All animal product except dairy).

Specialty wiping solutions for specialised work environments

KIMBERLY-CLARK PROFESSIONAL™, maintain a range of specialty wiping solutions for those workplaces with particular needs.

From self-mix sanitising systems to precision wiping solutions and hygiene specific products for settings that require...



Sanitising

Pre-saturated wipes and self mix bucket systems are available to help maintain the highest levels of workplace hygiene.



Low Linting

A range of surface preparation and scientific wipes with low lint and anti-static qualities



Use with Oil

Ideal for use with grease and oils

KIMTECH®

Scott®
Brand
CONTROL™

Sanitising Wiper Solutions

KIMTECH® Wipers for the WETTASK® System Refillable Wiping System

- A portable ready-to-use dispensing system of dry wipers that can be pre-moistened with your preferred chemicals, solvents and sanitisers¹
- Increases cleaning efficiency and reduces cross contamination risk²
- Reduces worker exposure, solvent waste and evaporation for a safer, more cost-efficient workplace²
- Unlike rags, the wipers are designed to be compatible with commonly-used disinfectants¹



**KIMTECH® WETTASK®
HYDROKNIT® Wipers**
White, 60 sheets/roll,
6 rolls, 1 bucket/case,
30.5cm x 31.7cm.
ORDER CODE: 6001



**KIMTECH® WETTASK®
Meltblown Wipers**
White, 140 sheets/roll,
6 rolls, 1 bucket /case,
30.5cm x 15.2cm.
ORDER CODE: 6411



**KIMTECH® WETTASK®
HYDROKNIT® Wipers**
White, 60 sheets/roll,
individually wrapped,
6 rolls/case,
30.5 x 31.7cm.
ORDER CODE: 6101



KIMTECH®

Dispenser



7919
KIMTECH® WETTASK®
Bucket Dispenser
4 buckets/case
+ assorted labels and seals.
Compatible:
6001, 6411, 6101.

1. Refer to KCP chemical compatibility chart. User has responsibility to test the products with their preferred solvent
2. Compared to rags in open bucket

KIMTECH PREP® EPIC™ Wipers

Ideal for use with grease and oils.

- Wipers are made with polypropylene
- Perfect for use with lubricants, grease and oil
- Convenient brag box format for manufacturing and maintenance areas



KIMTECH PREP® EPIC™
Brag Box Wipers
Blue, 250 wipers/case,
42cm x 34.5cm
ORDER CODE: 4155

KIMTECH®

SCOTT® ALCOHOL ANTIBACTERIAL WIPE

- Commercial grade disinfectant wipe
- Kills 99.9% of bacteria
- Pre-saturated, portable and ready to use anytime, anywhere

KIMTECH® DELICATE TASK WIPERS

- Designed for delicate tasks



SCOTT® Alcohol Antibacterial Wipe
 70 wipes/canister
 12 packs/case,
 14cm x 20.5cm
ORDER CODE: 4100



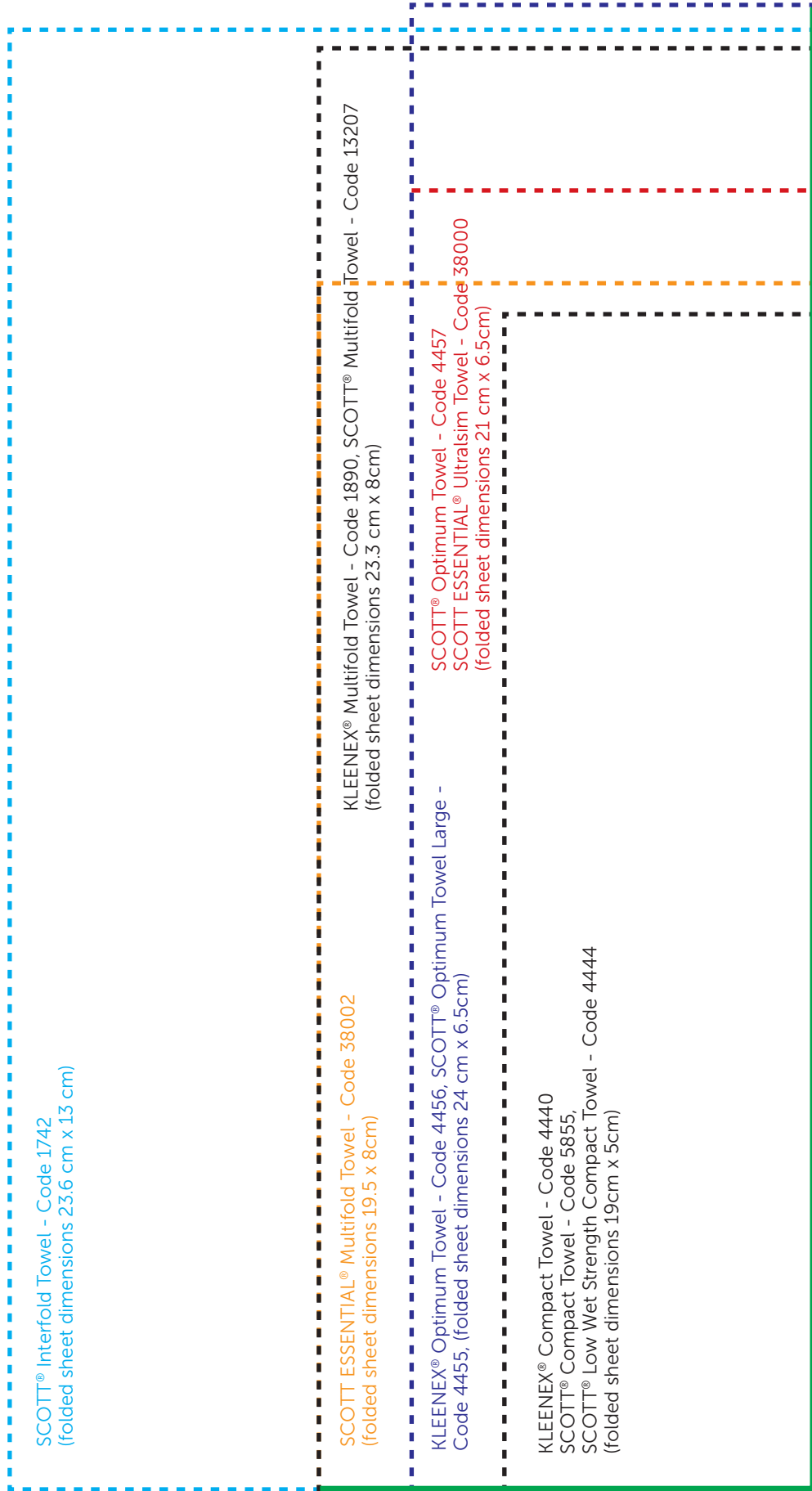
KIMTECH SCIENCE® KIMWIPES® Delicate Task Wipers
 21cm x 11cm,
 280 sheets/box,
 30 boxes/case.
ORDER CODE: 34120



MPI
 (4100) Dairy: MPI approved for use in farm dairies.
 MPI recognized for use in dairy processing.
 Non Dairy: MPI Approved (Generic, 4.1.7) (All animal product except dairy)

Directions for use:

Place a **folded** sample of your current towel from the dispenser against the boxes below. The shape that best fits the towel will determine the towel product you require to ensure your dispenser works effectively. (**NOTE:** actual towel widths can vary by up to 1cm from those noted - this will not effect fit or performance in the dispenser.)



What folded towel is that?...

How often are you left confused as to which towel to order so that it fits into the dispenser? This guide will help you identify the Kimberly-Clark product code and name of the towel you need.



Kimberly-Clark Australia Pty. Ltd,
Level 4, 100 Arthur St,
North Sydney, NSW, 2060, Australia.
Tel: 1800 647 994

www.kcprofessional.com.au

Kimberly-Clark New Zealand,
Level 2, 123 Carlton Gore Rd,
Newmarket, Auckland 1023, New Zealand.
Tel: 0800 447 814

www.kcprofessional.co.nz

On our Websites you can:

- Check out the site for regular product news updates.
- Find PDFs of brochures and technical bulletins.
- Find information on our environmental practices.
- Find other information such as dispenser specifications and diagrams.



*Our "no quibble" performance guarantee, covering all Goods, assures you of trouble-free performance when used as directed in our recommended systems. The quality and consistency of our products allows us to offer a money back or replacement of stock guarantee for any performance troubles caused by, or defects in, our Goods for a period of 12 months from delivery.

Guaranteed support: The answer to any queries you may have on any of our products is just a phone call or email away.

Australia: kcprofessional.com.au/contact-us or 1800 647 994

New Zealand: kcprofessional.co.nz/contact-us or 0800 447 814

Nothing contained herein shall exclude, restrict or modify our liability under the Australian Consumer Law or any other legislation of a State of Territory of the Commonwealth of Australia or New Zealand.

© / ™ Trademarks Kimberly-Clark Worldwide, Inc. © KCWW. All rights reserved.

Scott®

Kleenex®

WYPALL®
BRAND

KIMTECH®