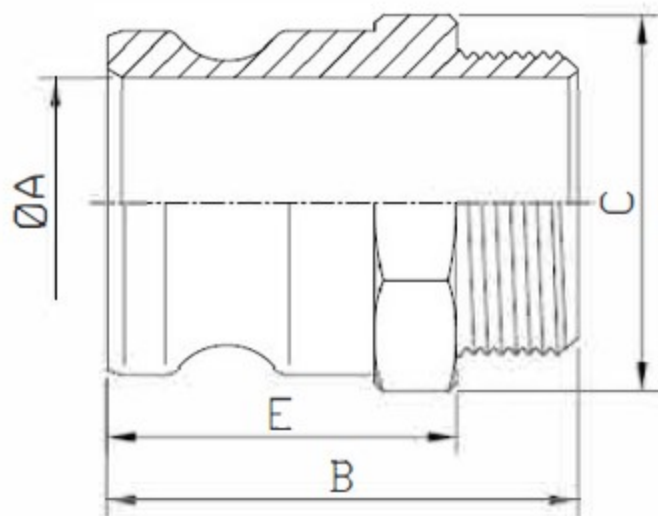


Adaptor Male Thread

TYPE F



Size	1/2"	3/4"	1"	1-1/4"	1-1/2"	2"	2-1/2"	3"	4"	6"
Size of Thread	1/2"	3/4"	1"	1-1/4"	1-1/2"	2"	2-1/2"	3"	4"	6"
B: Overall Length	49	58	67.5	73.2	74.7	87.1	97	101	107.9	116.3
E: Exposed Length	34	39	48.5	52.5	54	61.7	68	70	74.6	79.2
A: Min I.D.	14.2	21	23.8	30.8	38.5	46	58	73.2	98.2	150
C: Max Across Corners of Adaptors	28.6	39.2	43.8	51.9	60.4	70.4	82.3	97.8	126.8	187.6

unit:mm