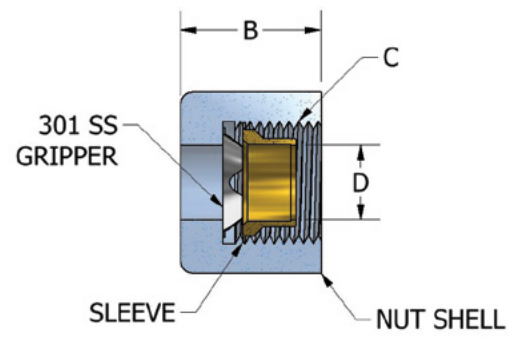
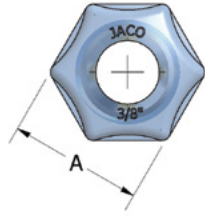
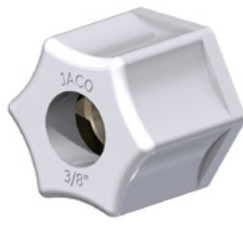


Stainless Steel Gripper Nuts

JACO		Tube	A	B	C	D
Part No.		O.D.				
Matl.	Nut	Tube				
	- SG - 4	1/4	5/8	43/64	7/16-20	.250
	- SG - 5	5/16	11/16	47/64	1/2-20	.312
	- SG - 6	3/8	13/16	23/32	5/8-20	.375
	- SG - 8	1/2	15/16	55/64	3/4-20	.500
	- SG - 10	5/8	1-1/8	7/8	7/8-20	.625
	- SG - 12	3/4	1-5/16	1	1-1/16-20	.750
	- SG - 14	7/8	1-7/16	1-1/8	1-3/16-16	.875

Note: Pressure rating = 220 psi



SG NUT =
STAINLESS STEEL
GRIPPER NUT