

Series JGF (Flange Mount) & Series JGR (Angle-Riser Mount) Gear Drive Mixers Heavy Helical Gear, 350 rpm, Grease Lube

All features of Series JG gear drive mixers (see opposite page) are provided with alternate flange and angle-riser mounts.

Series JGF Mixers (Flange Mount)

- Flange stuffing box rated to 15 PSI.
- Standard mounting flange is 6" carbon steel, 316SS optional.
- Optional flanges available in 8", 10", 12" or 14".

Series JGR Mixers (Angle-Riser Mount)

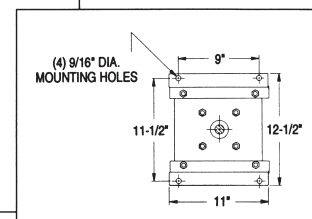
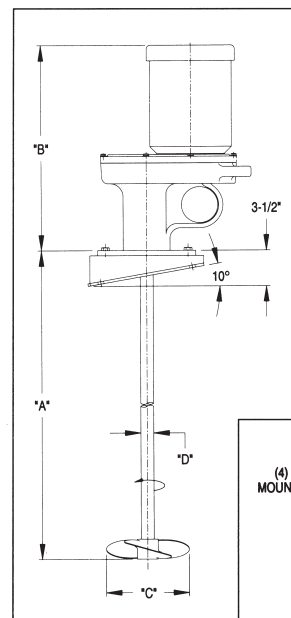
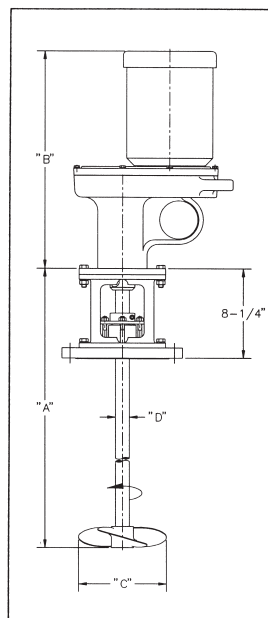
- Angle-riser mount provides a fixed 10° angle of entry.

Flange Mount Model No.	Angle-Riser Mount Model No.	Standard Motor Description	A Shaft Length	B	C		D Shaft Diameter
					Single	Dual	
Totally-enclosed fan-cooled (TEFC)							
JGF-2.0	JGR-2.0	1/3 HP-1-115/230	48"	17½"	10"	8"	¾"
JGF-2.1	JGR-2.1	1/3 HP-3-230/460	48"	17½"	10"	8"	¾"
JGF-3.0	JGR-3.0	1/2 HP-1-115/230	48"	18½"	12"	10"	¾"
JGF-3.1	JGR-3.1	1/2 HP-3-230/460	48"	17½"	12"	10"	¾"
JGF-4.0	JGR-4.0	3/4 HP-1-115/230	60"	18¾"	13"	11"	¾"
JGF-4.1	JGR-4.1	3/4 HP-3-230/460	60"	18¾"	13"	11"	¾"
JGF-5.1	JGR-5.1	1 HP-3-230/460	60"	18¾"	14"	12"	1"
JGF-6.1	JGR-6.1	1½ HP-3-230/460	60"	18¾"	15"	13"	1"
JGF-7.1	JGR-7.1	2 HP-3-230/460	60"	20½"	16"	14"	1½"
JGF-8.1	JGR-8.1	3 HP-3-230/460	72"	21½"	16"	15"	1½"
JGF-9.1	JGR-9.1	5 HP-3-230/460	72"	23"	16"	15"	1½"
Explosion-proof class 1 group D (EP)							
JGF-2.2	JGR-2.2	1/3 HP-1-115/230	48"	20½"	10"	8"	¾"
JGF-2.3	JGR-2.3	1/3 HP-3-230/460	48"	17½"	10"	8"	¾"
JGF-3.2	JGR-3.2	1/2 HP-1-115/230	48"	21"	12"	10"	¾"
JGF-3.3	JGR-3.3	1/2 HP-3-230/460	48"	19½"	12"	10"	¾"
JGF-4.2	JGR-4.2	3/4 HP-1-115/230	60"	21½"	13"	11"	¾"
JGF-4.3	JGR-4.3	3/4 HP-3-230/460	60"	19½"	13"	11"	¾"
JGF-5.3	JGR-5.3	1 HP-3-230/460	60"	20½"	14"	12"	1"
JGF-6.3	JGR-6.3	1½ HP-3-230/460	60"	20½"	15"	13"	1"
JGF-7.3	JGR-7.3	2 HP-3-230/460	60"	22½"	16"	14"	1½"
Air motor							
JGF-3.4	JGR-3.4	1/3-1/2 HP AIR 12-20CFM at 40-80PSI	48"	17½"	12"	10"	¾"
JGF-4.4	JGR-4.4	3/4 HP AIR 30CFM at 60PSI	60"	18"	13"	11"	¾"
JGF-5.4	JGR-5.4	1 HP AIR 40CFM at 40PSI	60"	19½"	14"	12"	1"
JGF-6.4	JGR-6.4	1½ HP AIR 55CFM at 60PSI	60"	19½"	15"	13"	1"
JGF-7.4	JGR-6.4	2 HP AIR 65CFM at 70PSI	60"	15½"	16"	14"	1½"
JGF-8.4	JGR-8.4	4 HP AIR 125CFM at 90PSI	72"	16¾"	16"	15"	1½"
Variable speed 35 to 350 RPM totally-enclosed fan-cooled (TEFC)*							
JGF-2.7	JGR-2.7	1/3 HP Variable Speed, 1/115 V	48"	17½"	10"	8"	¾"
JGF-3.7	JGR-3.7	1/2 HP Variable Speed, 1/115 V	48"	18½"	12"	10"	¾"
JGF-4.7	JGR-4.7	3/4 HP Variable Speed, 1/230 V	60"	18¾"	13"	11"	¾"
JGF-5.7	JGR-5.7	1 HP Variable Speed, 1/230 V	60"	18¾"	14"	12"	1"

*Using AC motor/control package.



MODEL JGF-8.1



MODEL JGR-8.1