



Customer information packet

ECP3769T-5

7.5HP, 3510RPM, 3PH, 60HZ, 213T, 0732M, TEFC, F
EGM, LLC
Class - None
Division - Not Applicable

Specifications

Enclosure	TEFC
Frame	213T
Frame Material	Iron
Frequency	60.00 Hz
Output @ Frequency	7.500 HP @ 60 HZ
Phase	3
Synchronous Speed @ Frequency	3600 RPM @ 60 HZ
Voltage @ Frequency	575.0 V @ 60 HZ
XP Class and Group	None
XP Division	Not Applicable
Agency Approvals	CCSA US CSA CSA EEV UR
Ambient Temperature	40 °C
Auxillary Box	No Auxillary Box
Auxillary Box Lead Termination	None
Base Indicator	Rigid
Bearing Grease Type	Polyrex EM (-20F +300F)
Blower	None
Constant Torque Speed Range	6
Current @ Voltage	6.900 A @ 575.0 V
Design Code	B
Drip Cover	No Drip Cover
Duty Rating	CONT
Efficiency @ 100% Load	91.7 %
Electrically Isolated Bearing	Not Electrically Isolated
Feedback Device	NO FEEDBACK
Front Face Code	Standard
Front Shaft Indicator	None
Heater Indicator	No Heater
High Voltage Full Load Amps	6.9 a

Part detail

Revision	Q
Type	AC
Mech. spec.	07K374
Base	
Status	PRD/A
Elec. spec.	07WGY902
Layout	07LYK374
Eff. date	04-22-2020
CD Diagram	CD0006
Poles	02
Leads	3#14
Proprietary	False
Created date	06-11-2013

Insulation Class	F
Inverter Code	Inverter Duty
KVA Code	H
Lifting Lugs	Standard Lifting Lugs
Locked Bearing Indicator	No Locked Bearing
Max Speed	5400 rpm
Motor Lead Exit	Ko Box
Motor Lead Quantity/Wire Size	3 @ 14 AWG
Motor Lead Termination	Flying Leads
Motor Standards	NEMA
Motor Type	0732M
Mounting Arrangement	F1
Number of Poles	2
Overall Length	19.50 IN
Power Factor	88
Product Family	Chemical Processing (Not DC)
Pulley End Bearing Type	Ball
Pulley Face Code	Standard
Pulley Shaft Indicator	Standard
Rodent Screen	None
RoHS Status	ROHS COMPLIANT
Service Factor	1.15
Shaft Diameter	1.375 IN
Shaft Extension Location	Pulley End
Shaft Ground Indicator	No Shaft Grounding
Shaft Rotation	Reversible
Shaft Slinger Indicator	Shaft Slinger
Speed	3510 rpm
Speed Code	Single Speed
Starting Method	Direct on line
Thermal Device - Bearing	None
Thermal Device - Winding	None
Vibration Sensor Indicator	No Vibration Sensor
Winding Thermal 1	None

Winding Thermal 2

None

XP Temp Code

T3C

Nameplate

NP3257E									
CAT.NO.	ECP3769T-5								
SPEC.	07K374Y902G2								
HP	7.5 TE								
VOLTS	575								
AMP	6.9								
RPM	3510								
FRAME	213T		HZ	60		PH	3		
SER.F.	1.15	CODE	H	DES	B	CL	F		
RATING	40C AMB-CONT								
SN									
DE	6307		ODE	6307					
NEMA-NOM-EFF	91.7		PF	88					
G.MIN.EFF	90.2	CC	010A						
T. CODE	T3C	T=	160						

NP3260E			
SPEC.	07K374Y902G2		
D.E. BRG.	35BC03XP30X		
O.D.E. BRG.	35BC03XP30X		
GREASE	POLYREX EM		
RPM MAX	5400	MAX. KVAR	0.3
BLANK			
INV.TYPE	PWM		
T=	160		
C HP FR	60	C HP TO	90
CT HZ FROM	6	CT HZ TO	60
VT HZ FROM	3	VT HZ TO	60
HTR-VOLTS		HTR-AMPS	
HTR-WATTS		MAX. SPACE HEATER TEMP.	

Parts list

Part number	Description	Quantity
SA264463	SA 07K374Y902G2	1.000 ea
RA251173	RA 07K374Y902G2	1.000 ea
36FN3000C02SP	EXFN, PLASTIC, 5.25 OD, 1.175 ID	1.000 ea
HW3201A05	3/8-16 EYEBOLT	1.000 ea
09CB1001A03G	CONDUIT BOX, MACH GRAY	1.000 ea
RM1017	LEAD SEPERATOR GASKET MODEL 307 1/8" THK	1.000 ea
19XW2520A16	SCREW,1/4-20X1 TAPTITE-II OR ROLOC 91	2.000 ea
11XW1032G06	10-32 X .38, TAPTITE II, HEX WSHR SLTD U	1.000 ea
HW3001B01	BRASS CUP WASHER, FOR #10 SCREW	1.000 ea
10XN2520S06	1/4 20X3/8 HX HD CAP S.S.	2.000 ea
WD1000B16	T&B CX70TN OR L70P TERMINAL LUG	1.000 ea
37EP1101C43G	TEFC 307 BRG, GR SR,RELIEF,.25-20 FH TAPS	1.000 ea
HW4500A01	1641B(ALEMITE)400 UNIV, GREASE FITT	1.000 ea
HA4051A00	PLASTIC CAP FOR GREASE FITTING	1.000 ea
HW4500A17	317400 ALEMITE GREASE RELIEF	1.000 ea
HA4054	SHORT T-DRAIN FITTING, .125" N.P.T.	1.000 ea
HW5100A08	W3118-035 WVY WSHR (WB)	1.000 ea
37EP1101A32G	PU ENDPLATE MACH	1.000 ea
HW4500A01	1641B(ALEMITE)400 UNIV, GREASE FITT	1.000 ea
HA4051A00	PLASTIC CAP FOR GREASE FITTING	1.000 ea
HW4500A17	317400 ALEMITE GREASE RELIEF	1.000 ea
HA4054	SHORT T-DRAIN FITTING, .125" N.P.T.	1.000 ea
XY3118A12	5/16-18 HEX NUT DIRECTIONAL SERRATION	4.000 ea
51XB1214A20	12-14X1.25 HXWSSLD SERTYB	1.000 ea
07FH1001A01G	SPL FAN HOUSING, 307, W/GREASER, GRAY EP	1.000 ea
10XN2520A28	1/4-20X 1 3/4 HEX HD	3.000 ea
WD4100A02	DP-1000 HEYCO PLUG OR 62MP1000 MICRO PL	1.000 ea
09CB1504A01G	LIPPED CONDUIT BOX LID, MACH GRAY EPOXY	1.000 ea
09GS1001A01	GASKET, BOX LID, 1/8 THICK BLACK NEOPREN	1.000 ea
10XN2520A12	1/4-20 X 3/4 HEX HEAD CAP	2.000 ea
HW1001A25	LOCKWASHER 1/4, ZINC PLT .493 OD, .255 I	2.000 ea

HA1005A07	SLINGER, OD 2.25, ID 1.344, 307 BRG	1.000 ea
HW4600B33	V-RING SLINGER 1.375 X 1.890 X .35 VITON	1.000 ea
HW2501F21	KEY, 5/16 SQ X 2.375	1.000 ea
HA7000A02	KEY RETAINER RING, 1 1/8 DIA, 1 3/8 DIA	1.000 ea
MJ5001A27	32220KN GRAY SEALER *MIN BUY 4 QTS=1GAL	0.001 qt
85XU0407S04	4X1/4 U DRIVE PIN STAINLESS	2.000 ea
LB1115N	LABEL,LIFTING DEVICE (ON ROLLS)	1.000 ea
LB1002N	LABEL,MARINE DUTY (ON ROLLS)	1.000 ea
MJ1000A02	GREASE, MOBIL POLYREX EM - 124047	0.050 lb
HA3104A32	THRUBOLT- 5/16-18 X12.750	4.000 ea
MG1025N19	WILKOFAS, 778.50, RELIANCE BLUE-GREEN	0.036 ga
LB1119N	WARNING LABEL	1.000 ea
LB1449	DIV-2/NEC WARNING LABEL	1.000 ea
LC0006	CONNECTION LABEL	1.000 ea
NP3257E	SS CP SUPER-E DIV-2 UL CSA-C US EEV PREM	1.000 ea
NP3260E	SS CP SUPER-E AUX DATA INFORMATION	1.000 ea
85XU0407S04	4X1/4 U DRIVE PIN STAINLESS	2.000 ea
07PA1011	PKG GRP, 07 CAST IRON PK1181	1.000 ea
MN416A01	TAG-INSTAL-MAINT no wire (1200/bx) 1/21	1.000 ea

AC Induction Motor Performance Data

Record # 47128

Typical performance - not guaranteed values

Winding: 07WGY902-R007		Type: 0732M	Enclosure: TEFC
Nameplate Data		575 V, 60 Hz: Single Voltage Motor	
Rated Output (HP)	7.5	Full Load Torque	11.11 LB-FT
Volts	575	Start Configuration	direct on line
Full Load Amps	6.9	Breakdown Torque	45.71 LB-FT
R.P.M.	3510	Pull-up Torque	15.4 LB-FT
Hz	60 Phase	Locked-rotor Torque	21.9 LB-FT
NEMA Design Code	B KVA Code	Starting Current	50.3 A
Service Factor (S.F.)	1.15	No-load Current	2.35 A
NEMA Nom. Eff.	91.7 Power Factor	Line-line Res. @ 25°C	1.73 Ω
Rating - Duty	40C AMB-CONT	Temp. Rise @ Rated Load	44°C
S.F. Amps		Temp. Rise @ S.F. Load	54°C
		Locked-rotor Power Factor	31.7
		Rotor inertia	0.292 LB-FT ²

Load Characteristics 575 V, 60 Hz, 7.5 HP

% of Rated Load	25	50	75	100	125	150	S.F.
Power Factor	61	79	86	89	90	89	89
Efficiency	73	82.4	85.9	86.9	87.1	86.8	91.3
Speed	3576	3555	3533	3508	3482	3452	3494
Line amperes	3	4.21	5.66	7.19	8.92	10.81	7.88

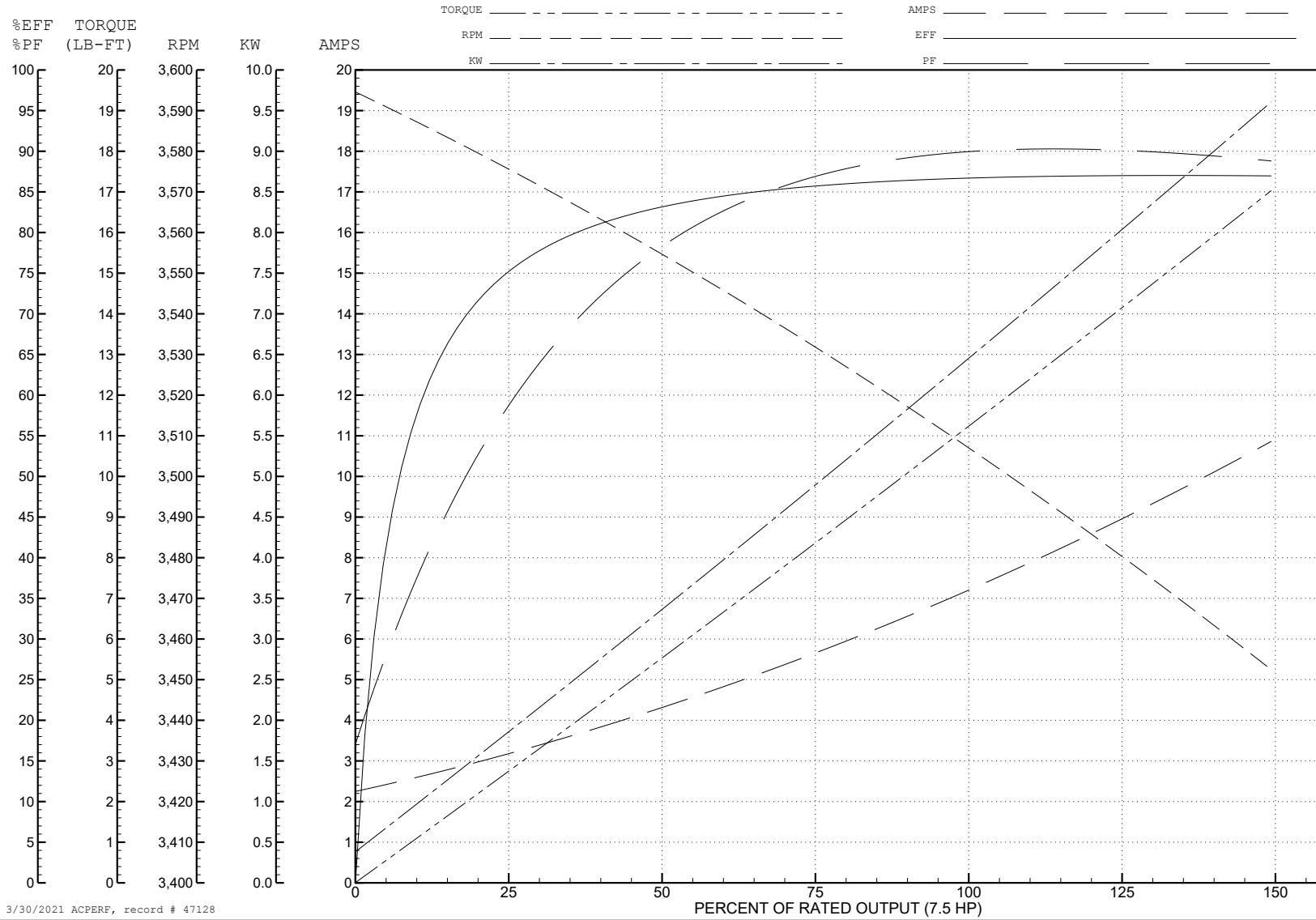
ABB Motors and Mechanical Inc.

WINDING # 07WGY902

Typical performance - not guaranteed values.

7.5 HP 3 PH 60 HZ 3510 RPM 575 V 0732M

TORQUES (LB-FT): PO=45.71 PU=15.4 LR=21.9 LRA=50.3



3/30/2021 ACPERF, record # 47128

AC Induction Motor Performance Data

Record # 78926

Typical performance - not guaranteed values

Winding: 07WGY902-R007		Type: 0732M		Enclosure: TEFC	
Nameplate Data			460 V, 60 Hz: Single Voltage Motor		
Rated Output (HP)	7.5	Full Load Torque	11.26 LB-FT		
Volts	575	Start Configuration	direct on line		
Full Load Amps	6.9	Breakdown Torque	29.23 LB-FT		
R.P.M.	3510	Pull-up Torque	9.64 LB-FT		
Hz	60 Phase	3	Locked-rotor Torque	13.71 LB-FT	
NEMA Design Code	B KVA Code	H	Starting Current	39.73 A	
Service Factor (S.F.)	1.15	No-load Current	1.71 A		
NEMA Nom. Eff.	91.7	Power Factor	88	Line-line Res. @ 25°C	1.73 Ω
Rating - Duty	40C AMB-CONT		Temp. Rise @ Rated Load	52°C	
S.F. Amps			Temp. Rise @ S.F. Load	69°C	
			Locked-rotor Power Factor	31.3	
			Rotor inertia	0.292 LB-FT ²	

Load Characteristics 460 V, 60 Hz, 7.5 HP

% of Rated Load	25	50	75	100	125	150	S.F.
Power Factor	72	87	90	91	90	87	90
Efficiency	88.4	91.5	91.4	90.3	88.4	86	89.2
Speed	3569	3538	3503	3464	3419	3361	3437
Line amperes	2.65	4.32	6.32	8.46	10.97	13.96	9.97

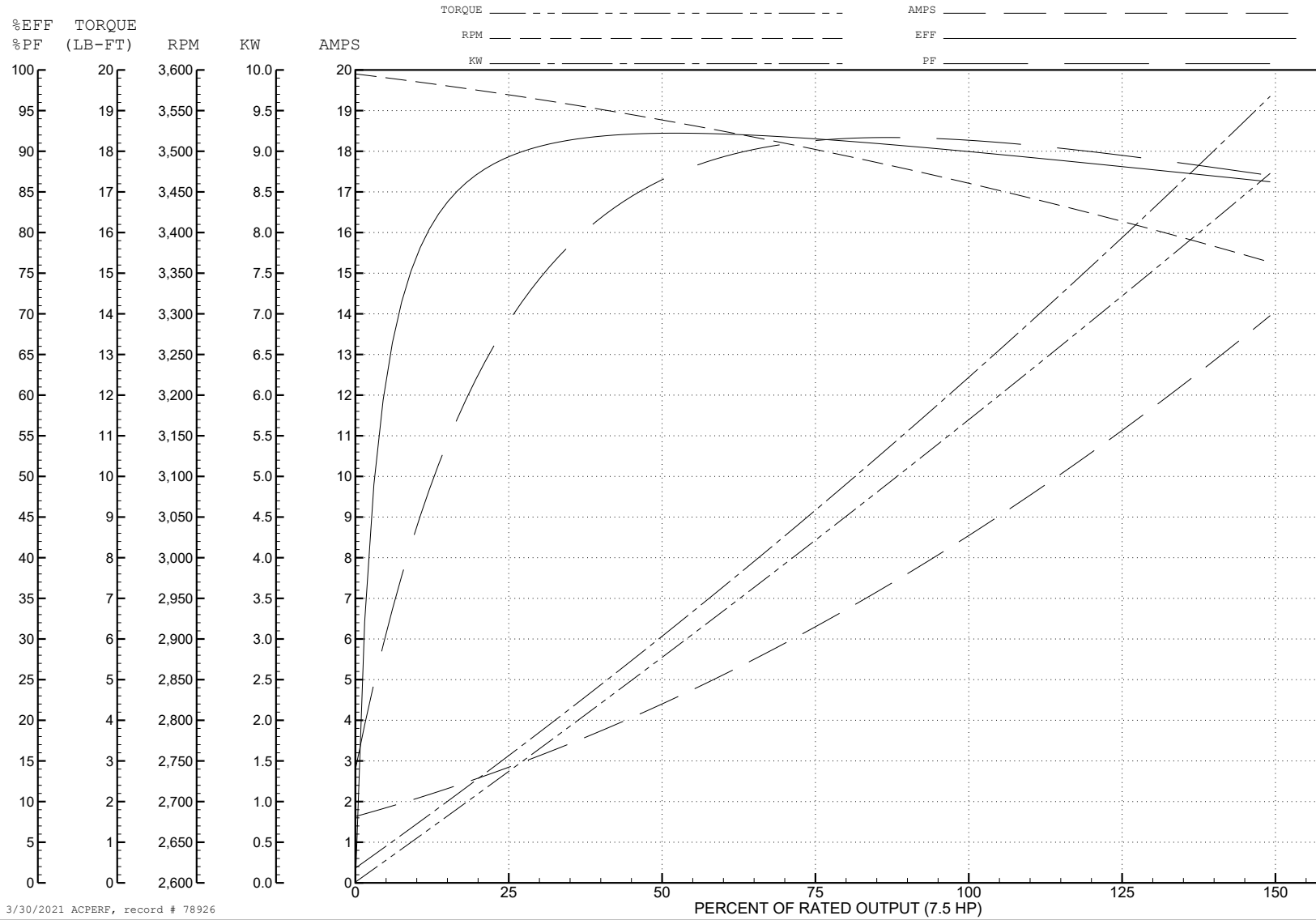
ABB Motors and Mechanical Inc.

WINDING # 07WGY902

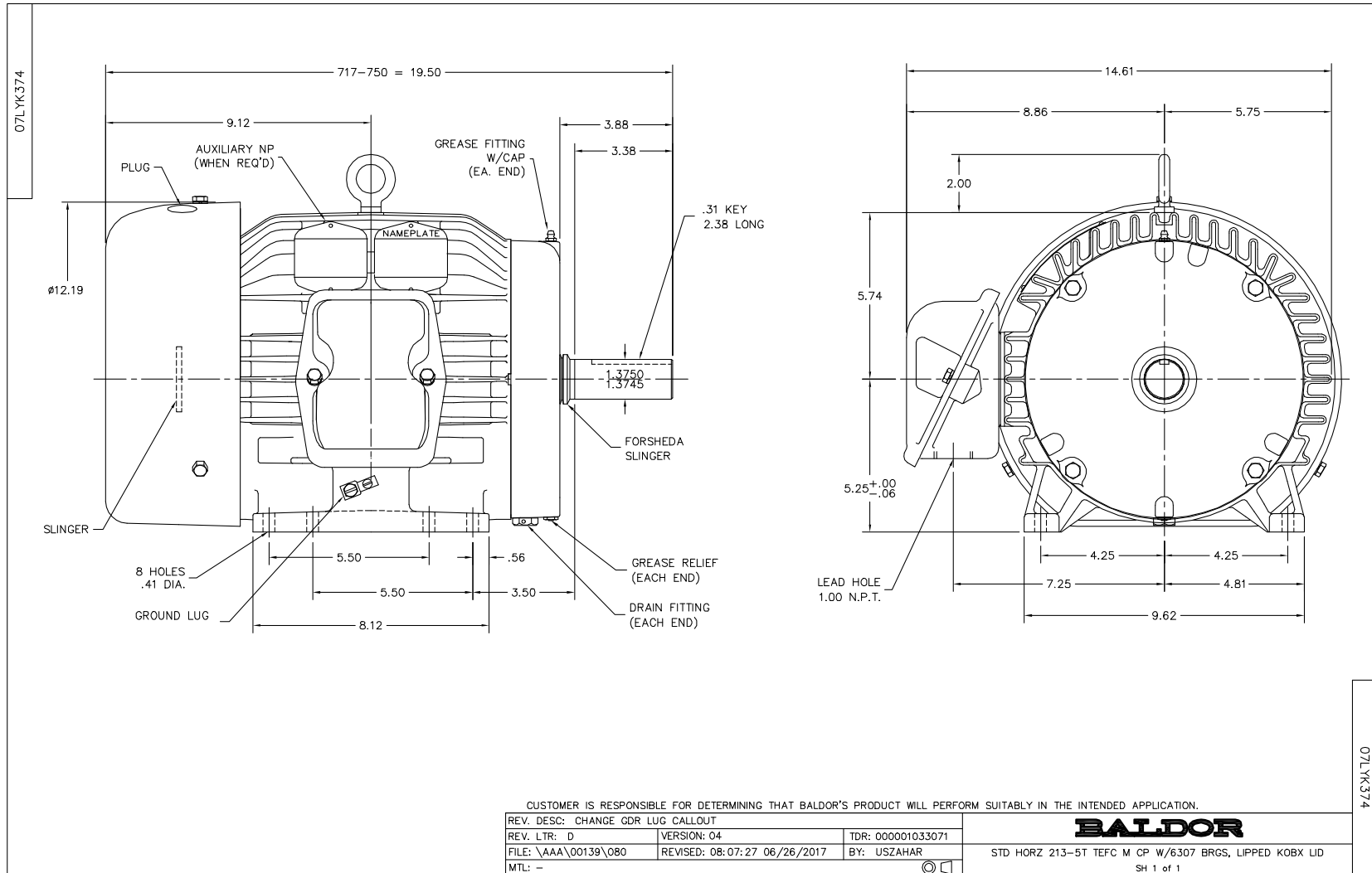
Typical performance - not guaranteed values.

7.5 HP 3 PH 60 HZ 3510 RPM 460 V 0732M

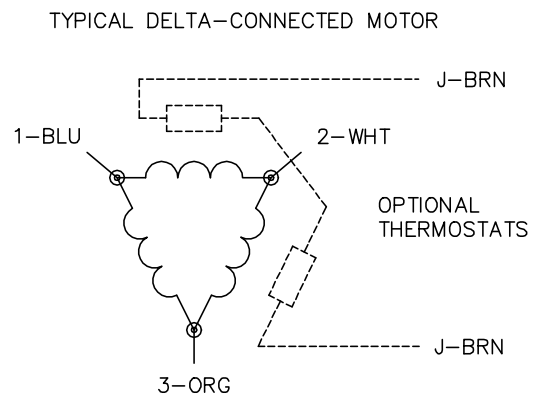
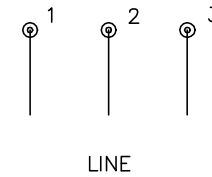
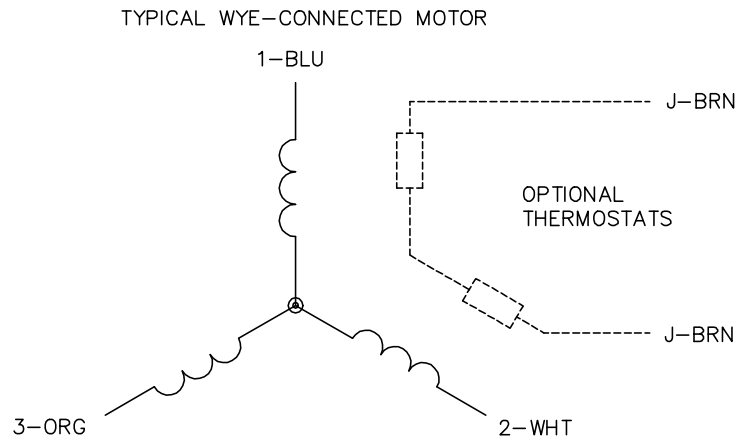
TORQUES (LB-FT): PO=29.23 PU=9.64 LR=13.71 LRA=39.73



3/30/2021 ACPERF, record # 78926



CD0006



NOTES:

1. THREE LEAD MOTOR MAY BE EITHER WYE CONNECTED OR DELTA CONNECTED.
2. INTERCHANGE ANY TWO LINE LEADS TO REVERSE ROTATION.
3. OPTIONAL THERMOSTATS ARE PROVIDED WHEN SPECIFIED.
4. ACTUAL NUMBER OF INTERNAL PARALLEL CIRCUITS MAY VARY.
5. LEAD COLORS ARE OPTIONAL. LEADS MUST BE NUMBERED AS SHOWN.

CD0006

REV. DESC: ADD CLASS CONN00000007		
REV. LTR: E	VERSION: 01	TDR: 000001099922
FILE: \AAA\00005\141	REVISED: 10:24:49 02/19/2019	BY: ENBRIRO
MTL: -	© □	

BALDOR - RELIANCE®

3PH, SV, 3 LEADS, WYE OR DELTA CONNECTED

SH 1 of 1