



Griffco Valve Inc.
 188 Creekside Dr
 Amherst, NY 14228 USA
 Phone: +1 716 835-0891
 Fax: +1 716 835-0893
sales@griffcovalve.com
www.griffcovalve.com

PVC CALIBRATION COLUMNS

Features:

- High Reliability / Affordable
- High Contrast Graduation Markings
- Clear Easy-View Tube
- Robust Schedule 40 Pipe Construction
- Direct mL / GPH Readout
- Sealed Top with Overflow Connection
- Optional EZ-Clean Model
- Optional Open Top with Dust Cap

Operation:

Griffco calibration cylinders are installed in the suction line to the chemical metering pump. Two isolating valves, (not supplied) must be installed in the suction line as per the drawing below. The top of the cylinder should be vented back to the storage tank or to drain. Fill the cylinder to the top mark then close the valve from the chemical tank. Switch on the chemical feed pump and draw down the chemical in the cylinder for 30 seconds. Switch the pump off. The reading on the right side of the cylinder is a direct readout of USgph. Alternatively, observe the volume withdrawn on the mL scale. To convert to LPH or GPH use this formula:

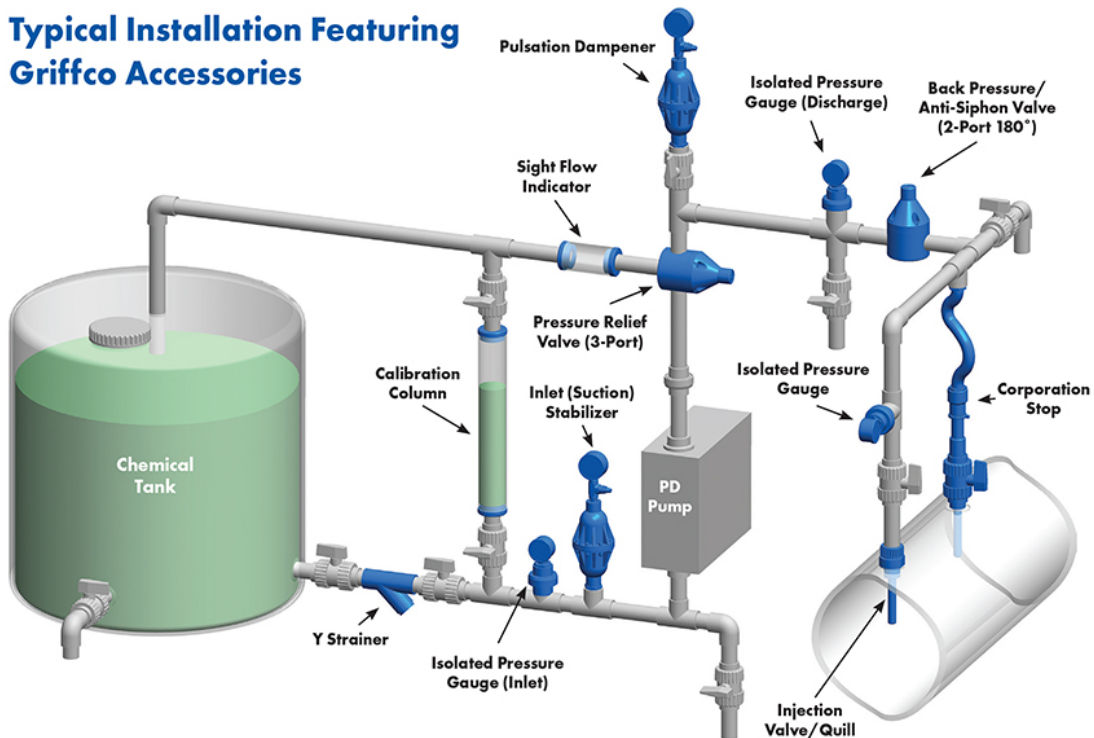
$$\text{LPH} = 3.6 \times [\text{mL}] \div \text{Time (sec)}$$

$$\text{GPH} = 0.951 \times [\text{mL}] \div \text{Time (sec)}$$

Note: Max. cylinder pressure is 15 psi.

Griffco calibration cylinders are designed to enhance the performance of chemical feed systems by providing a verification of the flow rate of the chemical feed pump. Robust construction of clear PVC with an easy to read graduation in mL and gph. Available in three models: EZ-Clean, Vented, and Open Top; and in 15 sizes: 100 mL through 40,000 mL as detailed here.

Typical Installation Featuring Griffco Accessories



Description of models:



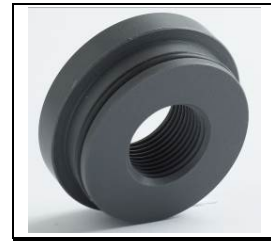
Sealed:

Top is glued to cylinder and contains a vent or overflow connection. (FNPT). Used in applications where there is a positive suction head, and a permanent installation is desired.



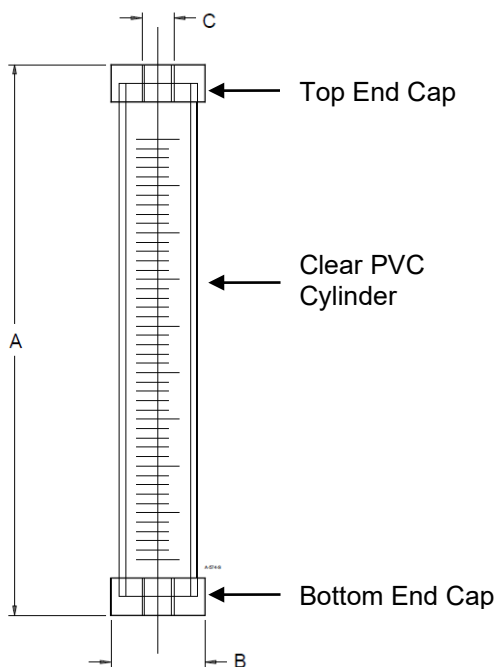
Loose Cap: (Avail. up to 20,000 mL)

Top is loose and does not have a connection in the top. Dust cover only. Used in applications where there is no positive suction head, and the cylinder must be filled from the top.



EZ-Clean: (Avail. 100 – 7000 mL only)

Top is sealed with an O-ring and has a vent connection, but removable for easy cleaning. Used in applications where frequent cleaning is required such as polymer, alum, ferric chloride or chlorine.



Capacity (mL) ◇	Max Flow (USgph)	▲ (lph)	Scale (mL)	Scale ▲ (gph)	A (in)	B (in)	C (in)
100	3.17	12	1	.1	11	1.5	1/2
200	6.34	24	1	.1	19	1.5	1/2
300	9.51	36	5	.2	13	2.2	1/2
500	15.85	60	5	.2	13	2.5	3/4
1000	31.70	120	5	.2	22	2.5	3/4
2000	63.40	240	10	1	20	3.7	1
3000	95.10	360	10	1	17	4.9	1 1/2
4000	126.8	480	10	1	37	3.7	1
W4000*	126.8	480	10	1	22.5	4.9	1 1/2
5000	158.5	600	10	1	28	4.9	1 1/2
7000	221.9	840	10	1	38	4.9	1 1/2
10,000	317.0	1200	100	5	25	6.95	2
15,000	475.5	1800	100	5	36	6.95	2
20,000	634.0	2400	100	5	47	6.95	2
30,000	952.0	3600	200	10	65*	9.5**	4
40,000	1,268.0	4800	200	10	77.5*	9.5**	4

▲ Max Flow and gph scale are based on 30 second drawdown

◇ For 60 sec draw down, double capacity in mL or flow size

*W4000 is shorter, wider version of 4000 model

**Reference only

Codes for Ordering PVC Calibration Columns:

CC □□□□ □ □ □
1 2 3 4

1 = Size

0100 – 100 mL
0200 – 200 mL
0300 – 300 mL
0500 – 500 mL
1000 – 1000 mL
2000 – 2000 mL
3000 – 3000 mL
4000 – 4000 mL
W4000 – 4000 mL
5000 – 5000 mL
7000 – 7000 mL
10000 – 10000 mL
15000 – 15000 mL
20000 – 20000 mL
30000 – 30000 mL
40000 – 40000 mL

2 = Top End Cap Style (Top Cap Only)

S – Sealed
L – Loose (up to 20000mL)
EZ – EZ Clean (up to 7000mL)

3 = Connections

Blank – Threaded
S – Socket
F – Flanged
U – Union

4 = Oring Material

(For EZ Clean and Union Connections Only)

Blank – FKM (Viton®)
E – EPDM

Available O-ring Options:

PTFE Encapsulated
or FFKM are available upon request