

30mm Command/52, Chrome Finish Heavy Duty, Watertight/Oiltight Complete Metal Unit Illuminated Indicator Light Full Voltage type, 120V AC/DC Incandescent Lamp, BA9s Plastic Lens, Red UL Listed, CSA Certified NEMA 1,3,3R,4,4X,12,13 & Automotive Standards

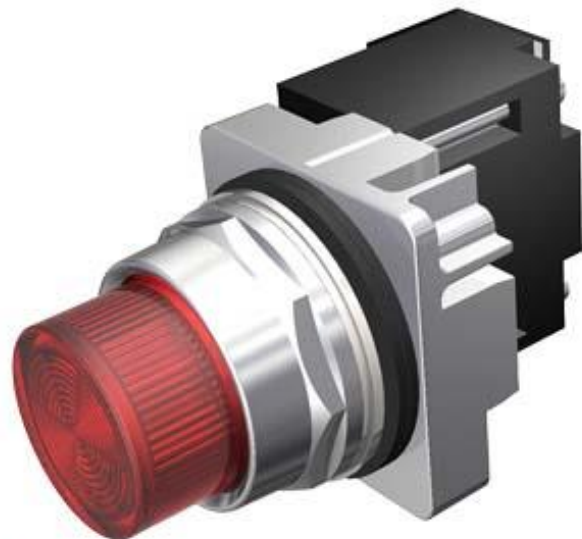


Figure similar

Product brand name	Siemens Pilot Devices
Design of the product	Complete Unit, Round
Enclosure	
Number of command points	1
Delivery state <ul style="list-style-type: none">• as a kit	No
Actuator	
Design of the operating mechanism	Indicator Light
Product extension optional Light source	Yes
Color <ul style="list-style-type: none">• of the actuating element	red
Material of the actuating element	plastic
Shape of the actuating element	Concentric rings
Front ring	
Product component front ring	Yes
Design of the front ring	standard
Material of the front ring	metal

Color of the front ring	chrome
Holder	
Material of the holder	metal
Contact block/ lampholder	
socket type	BA 9s, with incandescent lamp
Number of lampholders	1
Display	
Number of LED modules	0
General technical data	
Product component	
• lamp transformer	No
• Light source	Yes
Degree of pollution	1
Type of voltage	
• of the operating voltage	AC/DC
• of the input voltage	AC/DC
Surge voltage resistance rated value	4 kV
Protection class IP	IP66
• of the terminal	IP20
Vibration resistance	
• acc. to IEC 60068-2-6	0 ... 2000 Hz, 1.52 mm displacement (peak-to-peak) max./ 10g max.
Mechanical service life (switching cycles)	
• typical	5
Supply voltage	
Type of voltage of the supply voltage	
• of the light source	AC/DC
Supply voltage of the light source at AC	
• at 60 Hz rated value	120 V
Supply voltage of the light source at DC	
• rated value	120 V
Connections/ Terminals	
Type of electrical connection	screw-type terminals
• of modules and accessories	screw-type terminals
Type of connectable conductor cross-sections	
• at AWG conductors for auxiliary contacts	1x (18 ... 12), 2x (18 ... 16), 2x (16 ... 14), 2x 12
Tightening torque of the screws in the bracket	20 N·m
Tightening torque [lbf·in]	
• with screw-type terminals	8 ... 8 lbf·in
Lamp	

Type of light source	Incandescent
Color of the light source	clear

Safety related data

Protection against electrical shock	finger safe
-------------------------------------	-------------

Ambient conditions

Ambient temperature	
• during operation	-35 ... +70 °C
• during storage	-40 ... +85 °C

Installation/ mounting/ dimensions

Mounting type	
• of modules and accessories	screw-mounting
Shape of the installation opening	round

Certificates/ approvals

Further information

Information- and Downloadcenter (Catalogs, Brochures,...)

www.siemens.com/sirius/catalogs

Industry Mall (Online ordering system)

<https://mall.industry.siemens.com/mall/en/en/Catalog/product?mlfb=US2:52PL4E2>

Cax online generator

<http://support.automation.siemens.com/WW/CAXorder/default.aspx?lang=en&mlfb=US2:52PL4E2>

Service&Support (Manuals, Certificates, Characteristics, FAQs,...)

<https://support.industry.siemens.com/cs/ww/en/ps/US2:52PL4E2>

Image database (product images, 2D dimension drawings, 3D models, device circuit diagrams, EPLAN macros, ...)

http://www.automation.siemens.com/bilddb/cax_de.aspx?mlfb=US2:52PL4E2&lang=en

last modified:

12/05/2019