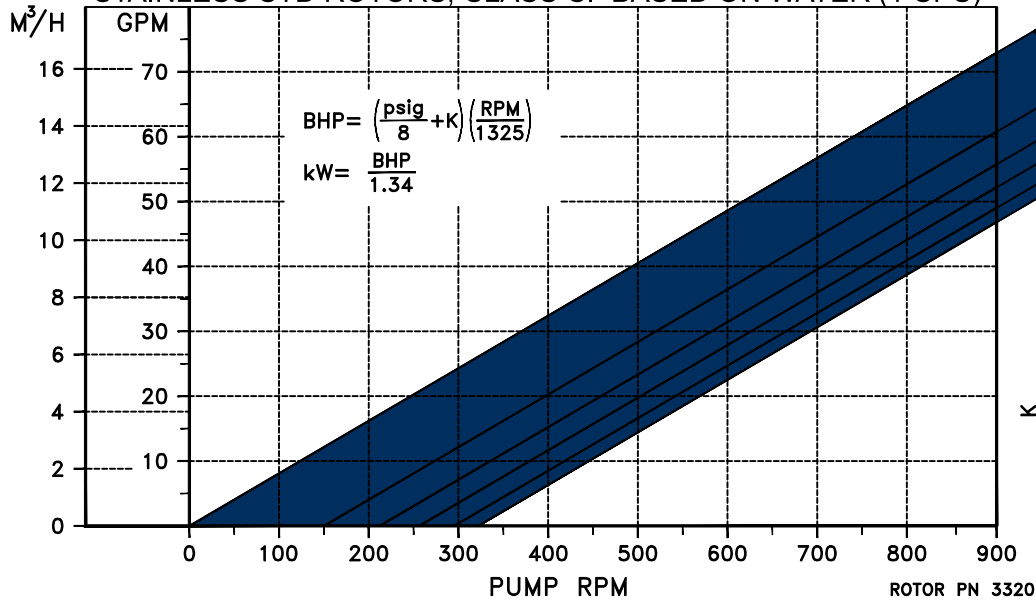


UNIBLOC®-PD SIZE 400

CAPACITY CHART

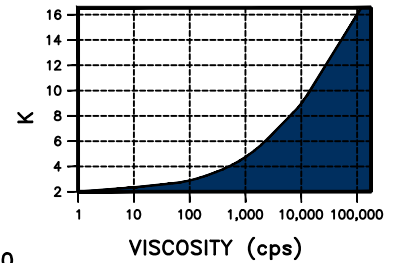
STAINLESS STD ROTORS, CLASS C. BASED ON WATER (1 CPS)



$$BHP = \left(\frac{PSIG}{8} + K \right) \left(\frac{RPM}{1325} \right)$$

$$kW = \frac{BHP}{1.34}$$

VISCOSITY FACTOR

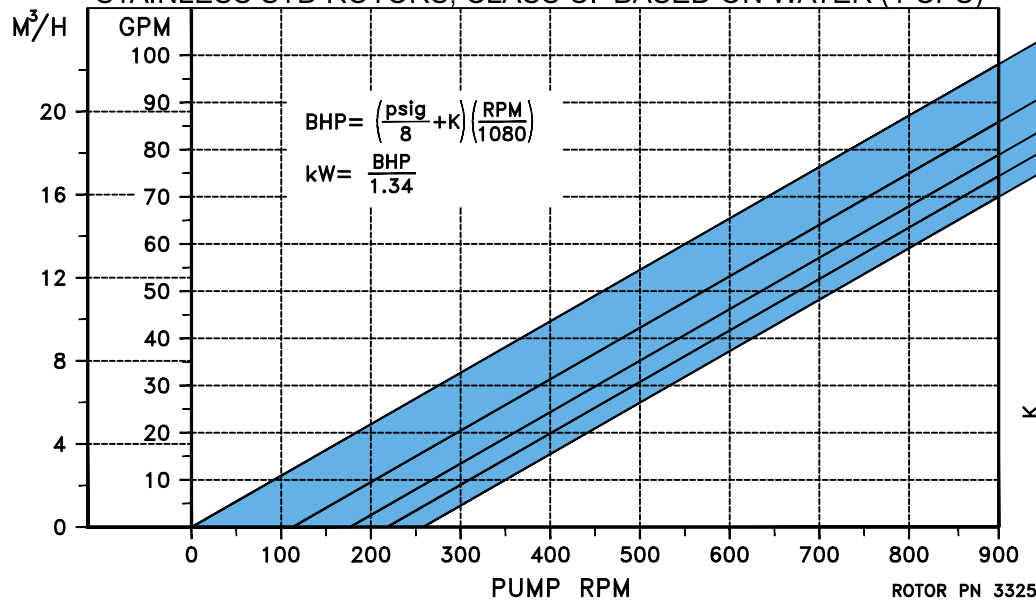


- *MAX PRESS. @ AMBIENT TEMP. & STANDARD CLASS D ROTOR = 210 PSIG (14 BAR)
- *MAX PRESS. @ AMBIENT TEMP. & HOT CLEARANCE CLASS E ROTOR = 250 PSIG (17 BAR)
- *MAX TEMP. @ 15 PSI (1 BAR) & STANDARD CLASS D ROTOR = 257°F (125°C)
- *MAX TEMP. @ 15 PSI (1 BAR) & HOT CLEARANCE CLASS E ROTOR = 400°F (205°C)

UNIBLOC®-PD SIZE 450

CAPACITY CHART

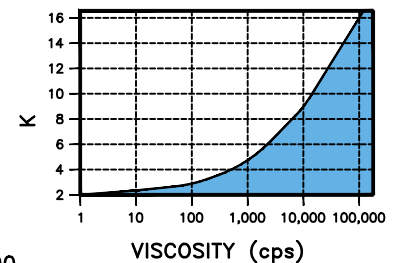
STAINLESS STD ROTORS, CLASS C. BASED ON WATER (1 CPS)



$$BHP = \left(\frac{PSIG}{8} + K \right) \left(\frac{RPM}{1080} \right)$$

$$kW = \frac{BHP}{1.34}$$

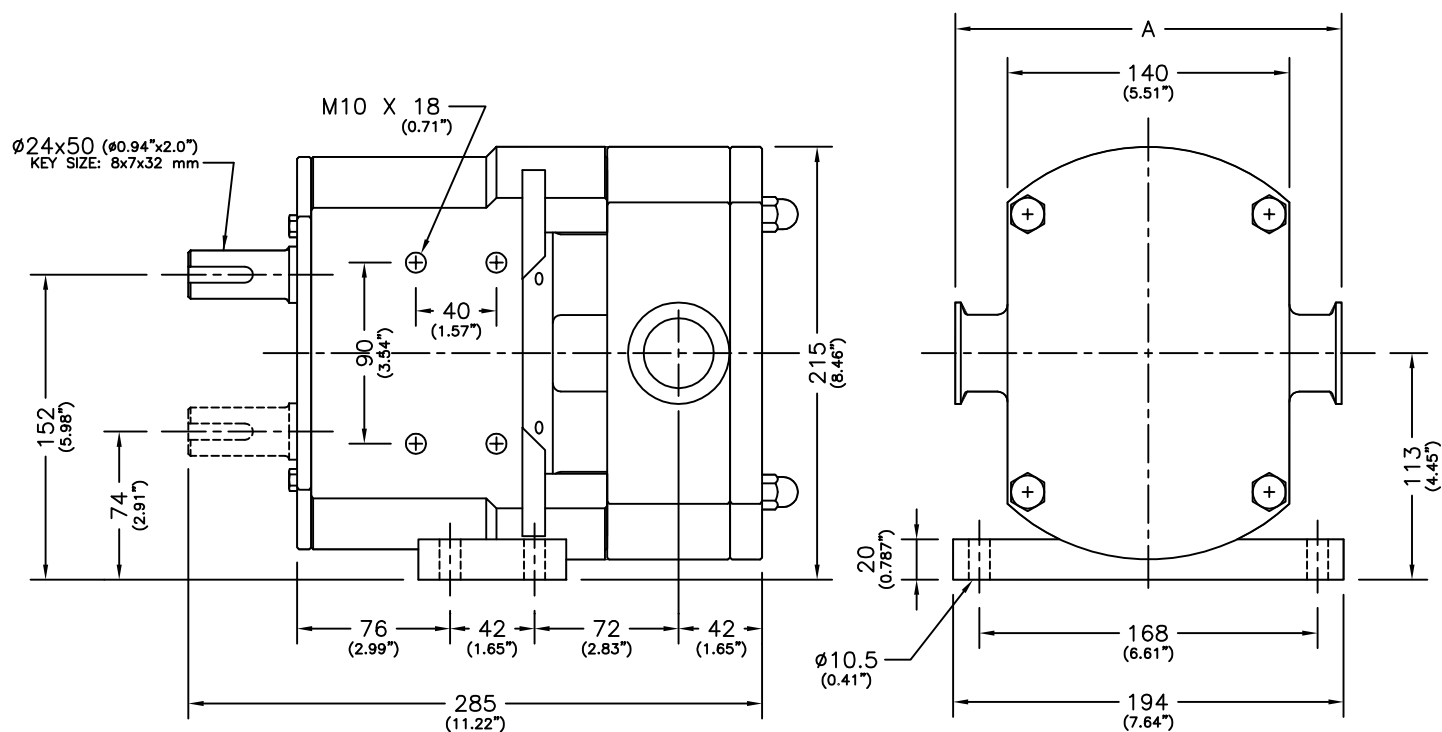
VISCOSITY FACTOR



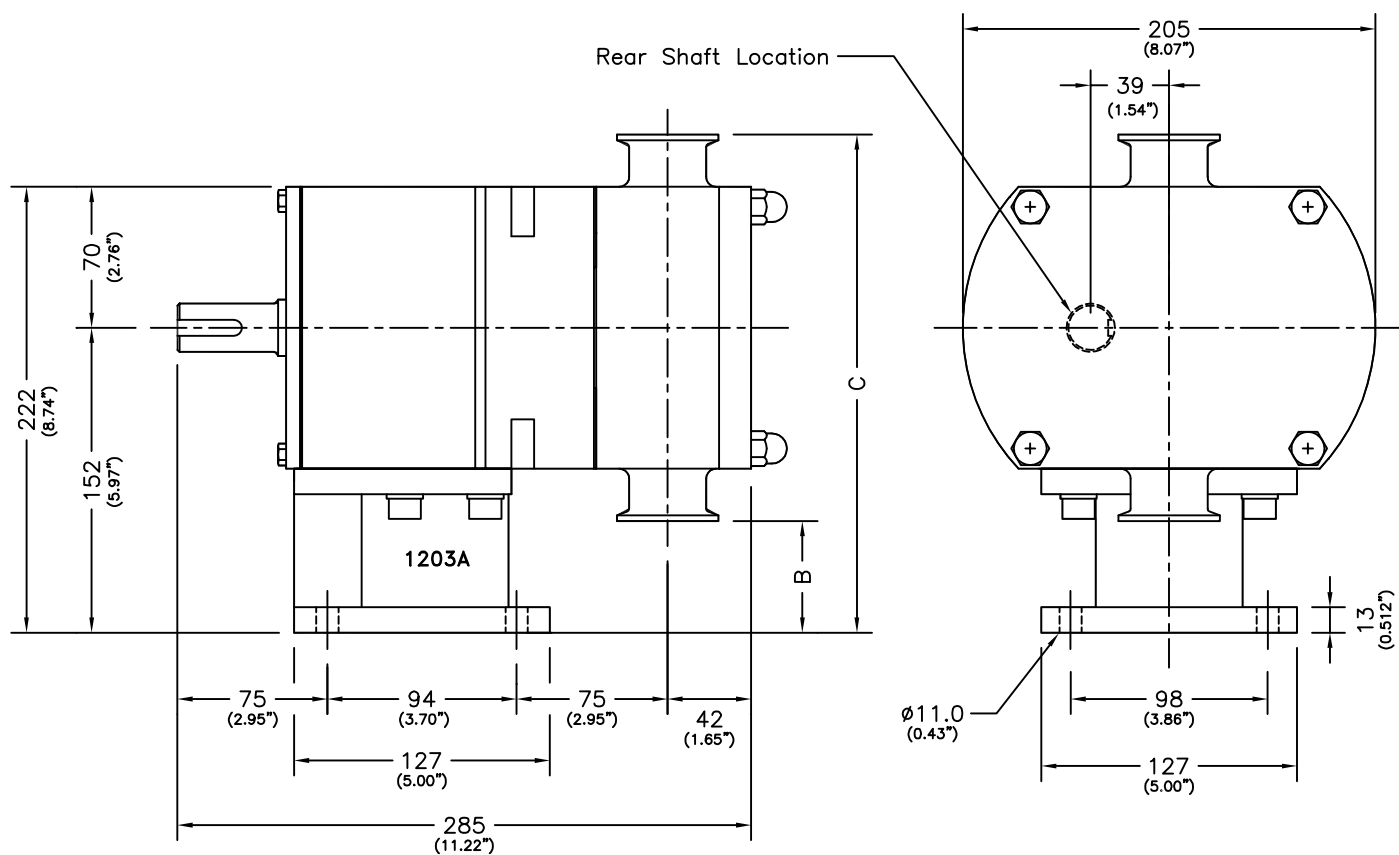
- *MAX PRESS. @ AMBIENT TEMP. & STANDARD CLASS D ROTOR = 150 PSIG (10 BAR)
- *MAX PRESS. @ AMBIENT TEMP. & HOT CLEARANCE CLASS E ROTOR = 210 PSIG (14 BAR)
- *MAX TEMP. @ 15 PSI (1 BAR) & STANDARD CLASS D ROTOR = 257°F (125°C)
- *MAX TEMP. @ 15 PSI (1 BAR) & HOT CLEARANCE CLASS E ROTOR = 400°F (205°C)

NOTE:
CAPACITIES VARY ±5%
*USE HIGHER CLASS ROTORS FOR MAX PRESSURE/TEMPERATURE APPLICATIONS
(CONTACT FACTORY FOR DETAILS)


UNIBLOC®-PUMP, INC.	
FLOWTECH DIV.	USA
DWG. TITLE	CAPACITY CHARTS (CLASS C ROTORS)
SIZE	400 & 450
DWG. NO.	D405C
RELEASE DATE	SHEET 1 OF 1



HORIZONTAL THROUGH-PUT



VERTICAL THROUGH-PUT

PORT TYPE	PORT SIZE	A		B		C		THIS DRAWING AND ALL IDEAS INCORPORATED IN ITS DESIGN IS THE EXCLUSIVE PROPERTY OF FLOWTECH, INC. ITS ACCEPTANCE CONSTITUTES AN AGREEMENT THAT IT SHALL BE TREATED AS A CONFIDENTIAL DOCUMENT USED FOR NO OTHER PURPOSE, WHEN TO BE AD IN ITS CONSTRUCTION, THAT IT IS TO BE RETURNED UPON REQUEST, AND THAT IT IS NOT TO BE DISCLOSED OR COPIED EXCEPT AS AUTHORIZED IN WRITING BY FLOWTECH, INC.	<div>UNIBLOC®-PUMP, INC.</div> <div>FLOWTECH div. USA</div>																	
		mm	in.	mm	in.	mm	in.		DWG. TITLE	SIZE	DWG. NO.															
SANITARY TRICLAMP	1.5"	192	7.56	56	2.20	248	9.76	<table><tr><td></td><td>BY</td><td>DATE</td></tr><tr><td>DRAWN</td><td></td><td></td></tr><tr><td>CHECKED</td><td></td><td></td></tr><tr><td>APP'D</td><td></td><td></td></tr><tr><td>SCALE</td><td></td><td></td></tr></table>		BY	DATE	DRAWN			CHECKED			APP'D			SCALE			GENERAL DIMENSIONS		
	BY	DATE																								
DRAWN																										
CHECKED																										
APP'D																										
SCALE																										
DIN 11851	DN 40	192	7.56	56	2.20	248	9.76		400	D400-02																
IDF	1.5"	192	7.56	56	2.20	248	9.76																			
SMS 681	NW 38	192	7.56	56	2.20	248	9.76																			
RJT	1.5"	192	7.56	56	2.20	248	9.76																			
ALL DIMENSIONS IN MM								RELEASE DATE	SHEET 1 OF 1																	

UNIBLOC-PD

Rotary Lobe Pumps

The **UNIBLOC-PD** rotary lobe pump has set the industry standard for high performance sanitary pumps. With the fully machined gearbox at its core, the UNIBLOC-PD's **compact design** offers a solid foundation for reliability and durability in the field. Available in multiple sizes, the UNIBLOC-PD provides solutions for a wide range of demanding applications. The **precision-engineered components** deliver smooth, low shear performance while maintaining product integrity. Our signature seamless design and crevice free pump interior form **the cleanest CIP/SIP capable pump in the industry**. The UNIBLOC-PD line is the premiere choice in sanitary pumps.



UNIBLOC-PD
Stainless Steel Pump

Features & Benefits



Bearing Housing

The Unibloc-PD bearing housing is the toughest precision built bearing housing in the industry. Its **fully machined exterior** is cleaner, smoother, and provides a non-stick surface for the ultimate in **sanitary design**. Our precision engineered gears combined with tough taper bearings gives the UNIBLOC-PD its signature smooth, quiet operation. For guaranteed pump and parts identification, the serial number is machined directly into the gearbox. No more missing tags or lost pump identification. Unibloc Gearboxes are **available in both Stainless Steel and Aluminum**.

Pump Head

Precision machined from solid stainless steel, the Unibloc pump head is the cleanest in the industry. The seamless design and porosity free guarantee are standard features found only on Unibloc pumps. The pump head interior and front cover have no pockets or crevices for product to become trapped, resulting in a **fully CIP/SIP capable design**. Every Unibloc pump head features our VSM technology, allowing the pump head to fit any seal type.



QuickStrip®
Easy-clean Rotors



Compac®
Coupled Solutions



DuraCore®
Durable Rotors

Shafts

Oversized shafts are the backbone to Unibloc-PD pump performance. The short, robust shafts greatly reduce deflection at high pressures and lead to tighter tolerances, increased flow-rates, and greater efficiency. More efficiency means slower operation speeds and increased life-span of components. **Hardened and sleeved shafts are available for increased durability**, faster maintenance, and decreased downtime.



Rotors

Unibloc's **patented rotor design** offers the optimal efficiency and performance demanded in the field. Our engineers have created rotor designs that result in low product shear and excellent displacement. Available in industry specific materials and designs, Unibloc rotors lead in design and function.



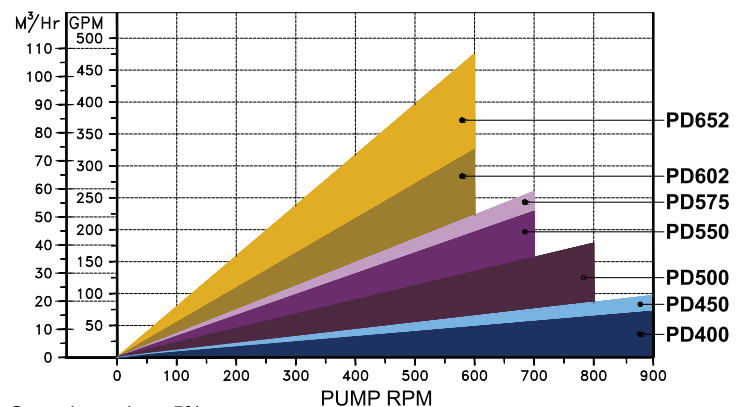
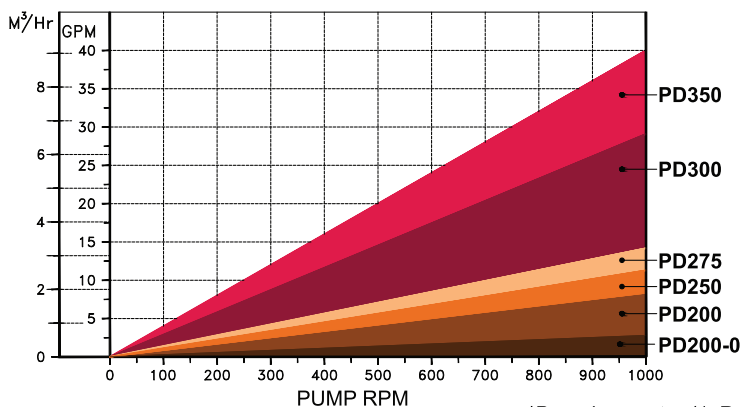
Specifications & Facts

- **Fully machined stainless** or coated aluminum bearing housing options
- **CIP & SIP** capable
- **Sanitary seamless pump head** for a cleaner, more durable product contact surface
- **Compac™ FMS (Flange Mount System)** allows pumps to easily direct-mount to motors or gear reducers
- **Versatile Seal Mounting(VSM)**- one pump accepts all seal types
- Port sizes from 3/8" to 6"
- Capacity **up to 480 GPM (1.815 LPM)**

- Built with **FDA approved materials**
- **Oversized shafts** mean less deflection and tighter tolerances
- **High temperature compatible** up to 400°F
- **High pressure capabilities** up to 500 psig
- **Bearing housing material & finish options** include stainless steel, painted steel, and multicoated aluminum
- **Multiple rotor designs/options** available to meet your specific application



Capacity Charts



*Based on water (1cPs) Capacity varies ±5%



Jacketed
Pump Heads



PolyFlex®
Plastic Metal Detectable Rotors



LABTOP®
Integrated Pump System

UNIBLOC-GP

Sanitary Gear Pumps



UNIBLOC-GP
Smooth Flow Gears



UNIBLOC-GP
with Compac FMS
(Flange Mount System)

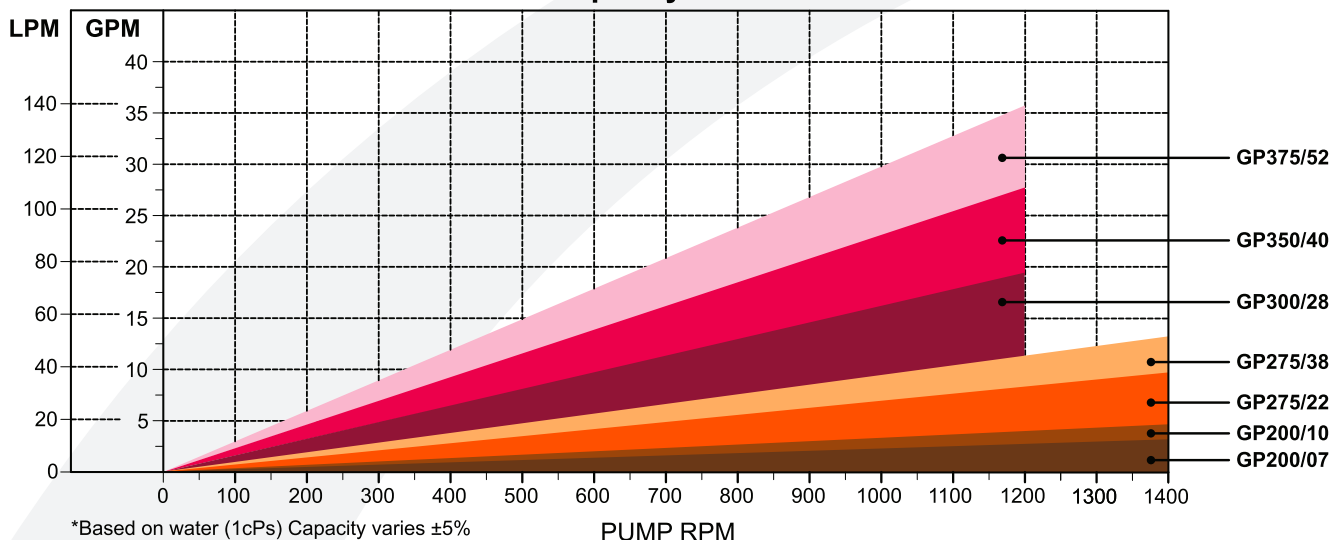


UNIBLOC-GPi
with NPT Fittings

Features & Benefits

- **Non-pulsating** flow
- Helical cut gears for **smooth, accurate, and quiet** operation
- Sanitary **3A design**, Third Party Verification (TPV)
- Sanitary tri-clamp porting in either **horizontal or vertical orientation**
- Port sizes from 1/2" to 2"
- Capacity **up to 36 GPM (137 LPM)**
- **FDA** approved materials
- **Toolless** disassembly & assembly
- Interchangeable gear housings for **multiple capacities** and products
- **Multiple gear material options**
- **Multiple pump seal options** for different customer needs
- **Crevice free** front cover and gear housing for optimal cleanliness
- Pump housing and cover **made of 316L** stainless steel
- **Fully machined stainless** or anodized aluminum bearing housing
- **Compac™ FMS (Flange Mount System)** allows pumps to easily direct-mount to motors or gear reducers
- **GPI** - industrial model with **NPT ports** available

Capacity Chart



UNIBLOC-PUMP

Unibloc-Pump, Inc.

1701 Spinks Drive SE • Marietta, Georgia 30067 • USA
Tel 770-218-8900 Fax 770-218-8442 E-Mail info@uniblocpump.com
www.uniblocpump.com

Unibloc-Pump AB

Lantvärnsgatan 4 • 652 21 Karlstad • Sweden
Tel +46-54-219000 Fax +46-54-212402 E-Mail info@uniblocpump.se
www.uniblocpump.se