

GOT815W-511 NEW

15.6" FHD TFT IP66 & IP69K-rated Stainless Steel Fanless PCT (or Resistive Touch) Panel Computer with Intel® Core™ i5-7300U Processor and Flat Bezel Design (-20°C to +50°C)

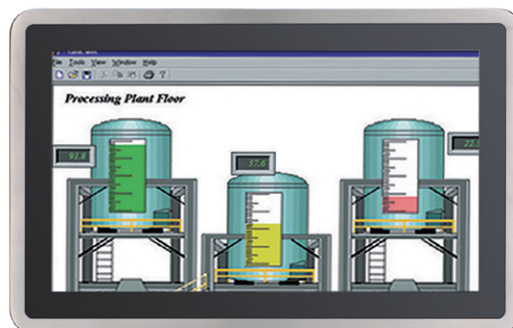
Features

- 15.6" FHD TFT flat bezel LCD display
- IP66/IP69K-rated (NEMA 4X) water/dust/corrosion-proof design
- Full stainless steel enclosure with type 316
- -20°C to +50°C wide operating temperature range
- Fanless design with Intel® Core™ i5-7300U processor
- Optional Wi-Fi/3G kit for wireless network connectivity
- 9 to 36 VDC wide range power input
- Supports VESA mount
- M12 type connectors for harsh environments



▲ Side view

1. Backlight on/off
2. Brightness adjust +/-
3. Power on/off



4. DC power connector
5. 1 x LAN
6. 1 x RS-232/422/485 (default RS-232)
7. 1 x RS-232/422/485 (default RS-232)
8. 2 x USB 2.0
9. 2 x USB 2.0



Introduction

The 15.6-inch GOT815W-511 is specially designed for food processing applications. Its IP66-rated stainless steel housing protects entire system from damage of water, powder and dust. It also supports a wide operating temperature range from -20°C to +50°C. Thus, this robust unit is specifically designed for high humidity, dusty or wet spaces in food factories or kitchens and more harsh applications.

Full IP66 and IP69K Certified

The GOT815W-511 adopts a water/dust-proof housing design with five IP66-rated M12 I/O connectors and IP69K that ensures the product's ability to resist ingress of high temperature and high pressure water. It passed entire system IP66 test by SGS, and verified salt mist test. Additionally, it was tested by a spray nozzle with high temperature water (+80°C), a flow rate of 14 to 16 L/min and a nozzle hold with distance 10 to 15 cm away from the device at angles of 0°, 30°, 60° and 90° for 30 seconds. The GOT815W-511 is qualified to meet harsh environment applications.

Wide Temperature (-20°C to +50°C) & Anti-vibration (1G) Design

The GOT815W-511 featuring fanless and noiseless design supports a wide operating temperature range from -20°C to +50°C. Besides, the patent of anti-vibration for SSD ensures system reliability and stability.

Specifications

| | | |
|-------------|---------------------------------|--|
| Enclosure | Stainless type 316 | |
| LCD Panel | Display Type | 15.6" FHD TFT LCD |
| | Brightness (cd/m ²) | 400 nits |
| | Resolution | 1920 x 1080 |
| | Viewing Angle (H/V) | 160°/140° |
| Main System | CPU | Intel® Core™ i5-7300U 2.6 GHz, up to 3.5 GHz (Kaby Lake) |
| | Chipset | SoC integrated |
| | System Memory | 1 x 260-pin DDR4-2133 SO-DIMM, up to 16GB |
| | BIOS | AMI UEFI BIOS |
| | Storage | 1 x 2.5" SSD HDD or 1 x 2.5" SATA HDD (9.5 mm height) |
| | Watchdog Timer | 255 levels, 1 to 255 sec. |
| | Onboard Graphics | Integrated in Intel® GFX |

Specifications

| | |
|-----------------------|---|
| I/O Connector | 2 x RS-232/422/485 (default RS-232, A-coded) 4 x USB 2.0 (A-coded) 1 x 10/100/1000 Mbps Ethernet supporting PXE and LAN wake-up (Intel® I210-IT; X-coded) 1 x DC power connector (M12) |
| Expansion Interface | 1 x Full-size PCI Express Mini Card slot 1 x Half-size PCI Express Mini Card slot |
| Touchscreen | 5-wire resistive touch or projected capacitive multi-touch |
| Power Input | 9 to 36 VDC |
| Power Consumption | 58.5W |
| Dimensions | 414.8 mm (16.4") (W) x 55mm (2.2") (D) x 265.1 mm (10.43") (H) |
| Packing Dimensions | 535mm (21.06") (W)* 196mm (7.71") (D) * 485mm (19.1") (H) |
| Weight (net/gross) | 6.3 kg (13.88 lb)/7.5 kg (16.53 lb) |
| Operating Temperature | -20°C to +50°C (-4°F to +122°F) |
| Relative Humidity | 10% - 95% @ +40°C, non-condensing |
| Operation Vibration | 1G, 5 - 500Hz, random for 2.5" SSD |
| Certifications | CE |

*W.T.: Wide temperature. All W.T. supported products have to be sorted by Axiomtek.

Packing List

- 1 x GOT815W-511
- 1 x DC cable

Ordering Information

| | |
|---------------------------------------|---|
| GOT815W-511-C-DC (P/N: E22B815123) | 15.6" FHD fanless IP66 & IP69K-rated stainless steel touch panel computer with Intel® Core™ i5-7300U, projected capacitive touch screen, 400 nits LCD and 9 to 36 VDC power input |
|---------------------------------------|---|

* Other configuration by request

* Specification and certifications may vary based on different requirements

Optional Accessories

| | |
|--------------|--|
| 594B8122100E | Water-proof COM cable (1.8 m) |
| 594B8152710E | Water-proof LAN cable (1.8 m) |
| 594B8152820E | Water-proof USB cable (1.8 m) |
| 50966224010E | Adapter 24V 90W, M12 A-code 5P FSP090AAAN3 |

Optional EOS Installation

Windows® 10 IoT

Optional OS Installation

Windows® 10

Dimensions

