

Full-size PCI Express Mini Modules

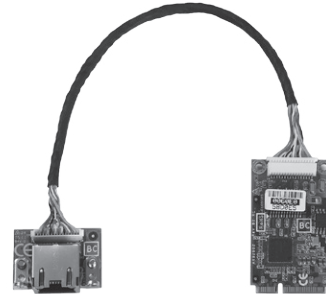
AX92902

Full-size PCI Express Mini Module with Gigabit LAN

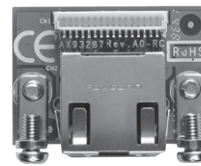
Features	<ul style="list-style-type: none"> ● Supports 10/100/1000 Mbps transfer rates ● Supports Wake-on LAN ● Supports PXE Boot ROM
Form factor	Full-size PCI Express Mini Card
Controller	Intel® i210IT
Specification	1 Gigabit Ethernet
Dimension	51 x 30 mm

Ordering Information

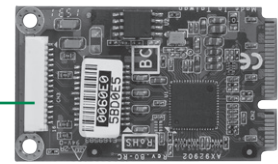
AX92902+AX93287 (P/N: E392902101)	Full-size PCI Express Mini Module with Gigabit LAN
--------------------------------------	--



▲ AX92902+AX93287



▲ AX93287



▲ AX92902

Gigabit LAN

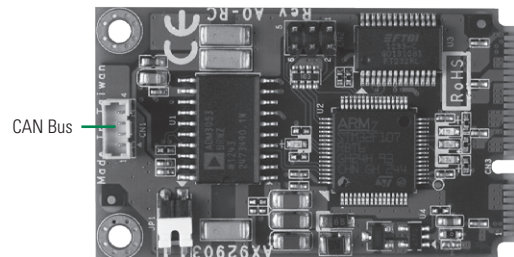
AX92903

Full-size PCI Express Mini Module with CAN Bus

Features	<ul style="list-style-type: none"> ● USB to 1 channel CANBus port ● Support CANOpen
Form factor	Full-size PCI Express Mini Card
Specification	CAN 2.0A and CAN 2.0B
Dimension	51 x 30 mm

Ordering Information

AX92903 (P/N: E392903100)	Full-size PCI Express Mini Module with CAN Bus
------------------------------	--



0
1
2
3
4
5
6
7

Accessories



Full-size PCI Express Mini Modules

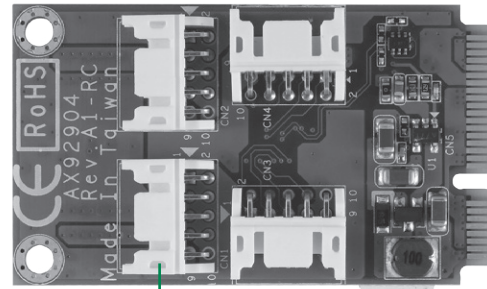
AX92904

Full-size PCI Express Mini Module with 32 bit DIO

Features	<ul style="list-style-type: none"> Support four 8-bit TTL level DIO ports with +5V powered Each bit can be programmable as input or output
From factor	Full-size PCI Express Mini Card
Specification	32 bit programmable DIO
Dimension	51 x 30 mm

Ordering Information

AX92904 (P/N: E392904101)	Full-size PCI Express Mini Module with 32 bit DIO
------------------------------	---



8 bit Digital I/O x 4

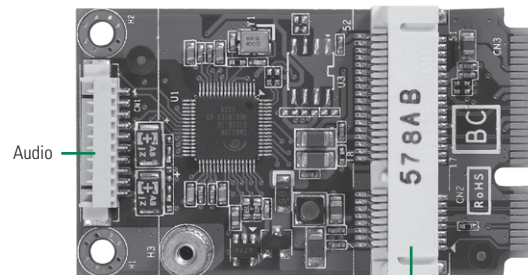
AX92905

Full-size PCI Express Mini Module with Audio

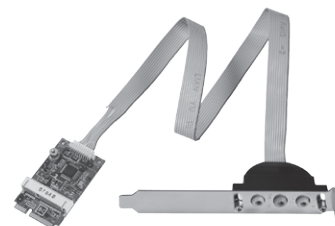
Features	<ul style="list-style-type: none"> USB to Audio as Mic-In/Line-In/Line-Out Supports one half-size PCI Express Mini card slot (PCIe only)
From factor	Full-size PCI Express Mini Card
Controller	Cmedia CM6510B
Specification	Specification Audio with Mic in/Line in/Line out and half-size PCI Express Mini Card slot (PCIe only)
Dimension	51 x 30 mm

Ordering Information

AX92905 (P/N: E392905100)	Full-size PCI Express Mini Module with Audio and Half-size PCI Express Mini Card (PCIe only)
------------------------------	--



Full-size PCI Express Mini Card (PCIe only)



▲ AX92905 with cable

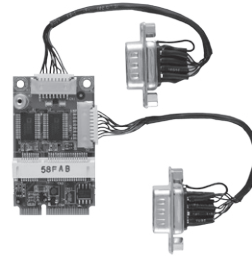
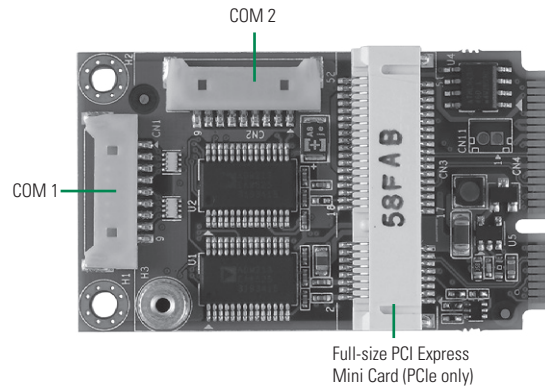
AX92906

Full-size PCI Express Mini Module with COM

Features	<ul style="list-style-type: none"> ● USB to 2 Channel high speed RS-232 ports ● Supports one half-size PCI Express Mini card slot (PCIe only)
From factor	Full-size PCI Express Mini Card
Specification	2 COM ports (2 x RS-232) and half-size PCI Express Mini Card slot (PCIe only)
Dimension	51 x 30 mm

Ordering Information

AX92906 (P/N: E392906100)	Full-size PCI Express Mini Module with COM and Half-size PCI Express Mini Card (PCIe only)
------------------------------	--



▲ AX92906 with cable

AX92907

NEW

Full-size PCI Express Mini Module with SATA

Features	<ul style="list-style-type: none"> ● Two independent SATA channels ● Fully compatible with SATA revision 2.0 and 3.0 hard drives (HDD) and Solid State Drives (SSD) ● Support RAID 0,1 ● Two SATA power connectors with +5V
From factor	Full-size PCI Express Mini Card
Specification	2 SATA connector and SATA power connector
Dimension	51 x 30 mm

Ordering Information

AX92907 (P/N: E392907100)	Full-size PCI Express Mini Module with SATA
------------------------------	---

Optional ordering for cables

59429070600E	SATA power cable L=200mm
--------------	--------------------------

