

# Win-GRAF EtherCAT User Manual

English

Ver. 1.0.0, AUG. 2022



## **WARRANTY**

All products manufactured by ICP DAS are warranted against defective materials for a period of one year from the date of delivery to the original purchaser.

## **WARNING**

ICP DAS assumes no liability for damages consequent to the use of this product. ICP DAS reserves the right to change this manual at any time without notice. The information furnished by ICP DAS is believed to be accurate and reliable. However, no responsibility is assumed by ICP DAS for its use, nor for any infringements of patents or other rights of third parties resulting from its use.

## **COPYRIGHT**

Copyright © 2022 by ICP DAS. All rights are reserved.

## **TRADEMARK**

Names are used for identification only and may be registered trademarks of their respective companies.

## **CONTACT US**

If you have any questions, please feel free to contact us via email at:

**[service@icpdas.com](mailto:service@icpdas.com)**, **[service.icpdas@gmail.com](mailto:service.icpdas@gmail.com)**



## **SUPPORT**

EMP-2848M

# Table of Contents

1. Introduction .....	3
2. Software Installation .....	4
2.1. Workbench .....	4
3. EtherCAT Fieldbus .....	5
3.1. EtherCAT Variable Mapping .....	5
4. Quick Start .....	10
4.1. Control Slave Module Steps .....	10
4.2. Motion Control Steps .....	16
Revision History .....	23

# 1. Introduction

EtherCAT (Ethernet Control Automation Technology) is a series of Ethernet-based industrial communication buses. It has established the mainstream in the industrial automation industry pursuing high precision, high efficiency, and low cost due to its high-speed communication performance and instant communication system.

Features:

- **EtherCAT is industrial Ethernet**  
The optimized EtherCAT data is included in the IEEE 802.3 Ethernet frame. The frame travels through the media at 100 Mbps in full-duplex mode.
- **Flexible Topologies**  
With two EtherCAT ports on all devices, no additional switches are required to create a linear network. EtherCAT junction slaves can be used to build tree and star topologies.
- **Distributed Clocks**  
The EtherCAT node slave measures the time difference between incoming and returning frame - timestamp. With these timestamps the master can determine the propagation delay offset to the individual slave accurately. This mechanism ensures accurate synchronization between devices with less than 1  $\mu$ s jitter.
- **Simple cabling**  
100Base-TX EtherCAT uses standard 100BASE-TX Ethernet communication very efficiently, over standard shielded Ethernet cables and connectors. No need for network switches.
- **Easy use, easy connect**  
When compared to a classic fieldbus system, EtherCAT is the obvious choice: node addresses can be set automatically, there's no need for network tuning, and onboard diagnostics with fault localization make pinpointing errors a snap. Despite these advanced features, EtherCAT is also easier to use than Industrial Ethernet: there are no switches to configure, and no complicated handling of MAC or IP addresses is required.
- **Processing on the fly**  
The slave devices extract and/or insert data on the fly. This method assures the highest possible throughput.

This manual describes how to use the ENI file generated by the EMP-2848M website to configure Win-GRAF EtherCAT Fieldbus and how to map the local variables to these configuration variables to control the EtherCAT slave modules.

## 2. Software Installation

### 2.1. Workbench

The Win-GRAF workbench setup program "Win-GRAF\_Workbench\_xxxx\_Setup" automatically installs the necessary EtherCAT plugin library

*C:\Program Files (x86)\Win-GRAF Workbench\Win-GRAF Wb xx.xx\IOD\K5BusEcat.dll*

### 3. EtherCAT Fieldbus

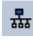
This chapter describes how to create an interface for the PLC application to access EtehrCAT. The Win-GRF workbench provides a graphic plugin that allows the user to map local PLC variables to the EtherCAT Process Image shared memory.

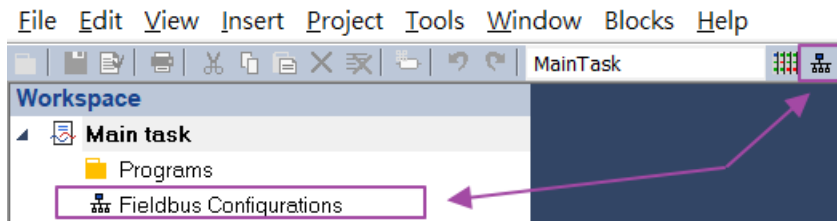
The EtherCAT Process Image shared memory can be divided into read/write segments, which define the variables to be exchanged for the slave module PDO communication. When the local variables are mapped to the EtherCAT Process Image variables, Win-GRAF Runtime will update the EtherCAT Process Image variable data in each cycle task, and exchange the Process Image data in the next EtherCAT communication cycle.


#### 3.1. EtherCAT Variable Mapping

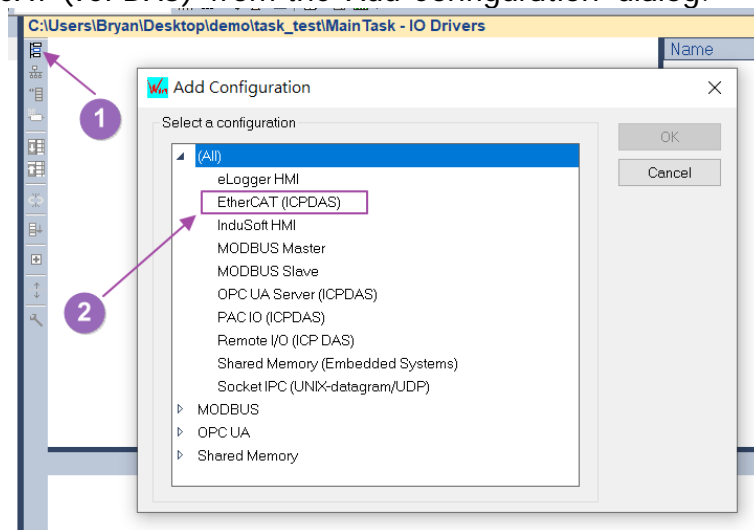
The following steps describe how to configure the EtherCAT Fieldbus.

[Steps]

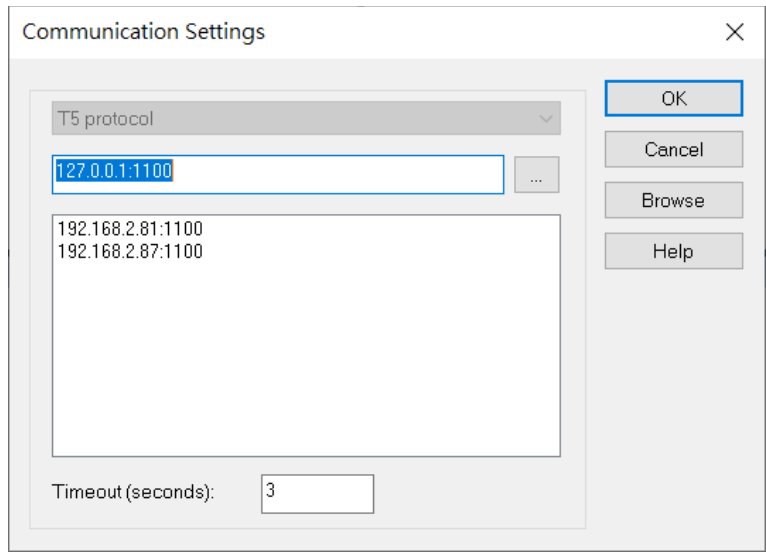
1. Please follow the steps A~D of the Slave Free-Run/DC Setup and Control section in the website user manual to create the ENI file and execute EtherCAT Runtime.
2. Start the Win-GRAF workbench and create a new project.
3. Open the Fieldbus Configurations window by clicking on the 'Fieldbus Configuration' button in the toolbar  or double clicking the 'Fieldbus Configuration' node in the workspace.



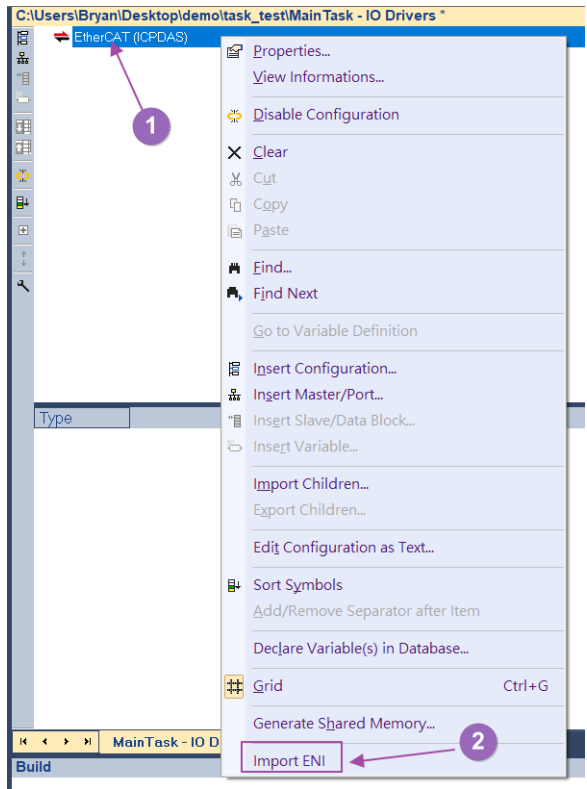
4. Click 'Insert Configuration'  button of the toolbar on the left of the 'IO Drivers' editor and select 'EtherCAT (ICPDAS)' from the 'Add Configuration' dialog.




5. Change the communication settings of Win-GRAF according to the hardware IP address.




6. Right-click on the 'EtherCAT (ICPDAS)' node and click on the 'Import ENI' option in the right-click menu.

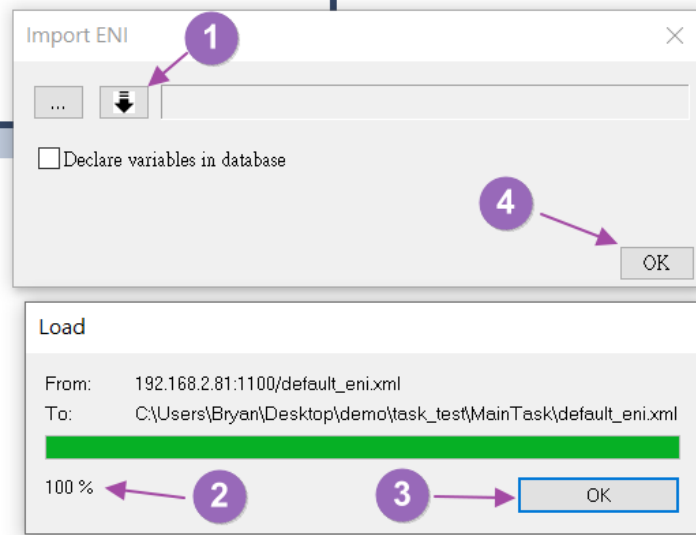


7. Click the 'Download ENI' button from the Import ENI dialog to download the ENI file, wait for 100% progress and click the 'OK' button on the Download dialog to close the window, and then click the OK button on the Import ENI dialog to close the Import ENI dialog. The following describes the parameters and buttons of the Import ENI dialog.

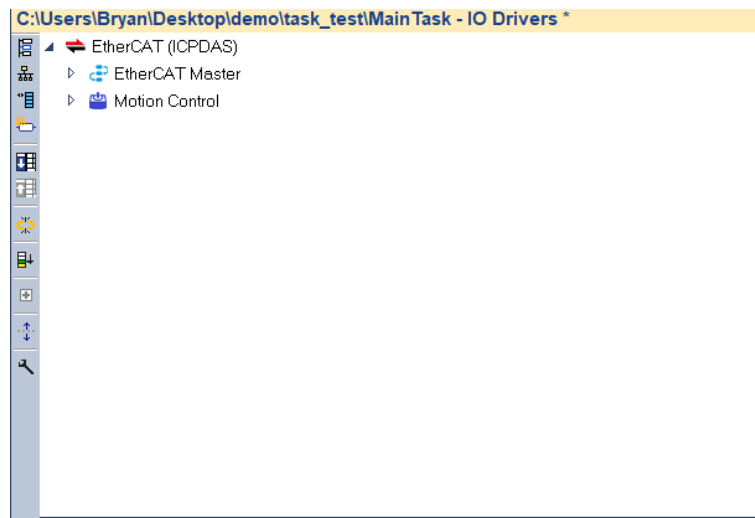
 - Open the ENI file to create the configuration.

 - Download the ENI file from the hardware to create the configuration.

Declare variables in database - Automatically create and map the global variables to the Process Image variables.



8. After downloading the ENI file from the hardware to create the configuration, the 'EtherCAT Master' and 'Motion Control' (only when the motion control function is activated) nodes will be created automatically under the 'EtherCAT (ICPDAS)' node.



9. Under the 'EtherCAT Master' node there are master and slave Process Image variables that can be mapped.

The parameters of the variable nodes are described below:

The following describes the parameters of the variable node.

Symbol - Name of the local variable to be mapped.

Tag - Variable name.

DataType - Variable data type.

Index - Variable index.

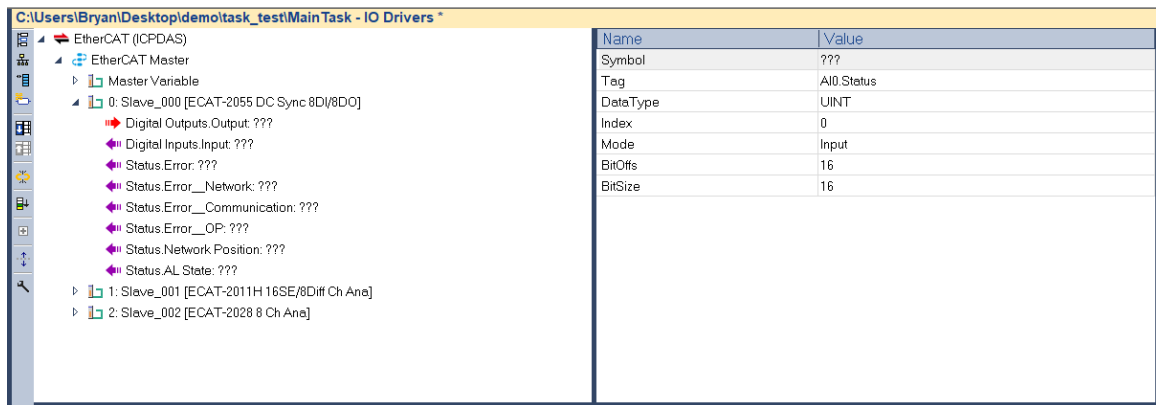
Mode - Variable data flow direction.

Input: Read master or slave variables to local variables.

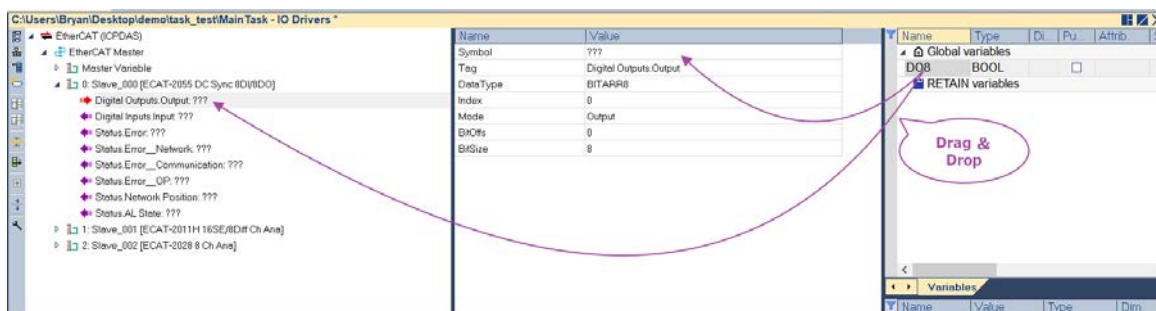
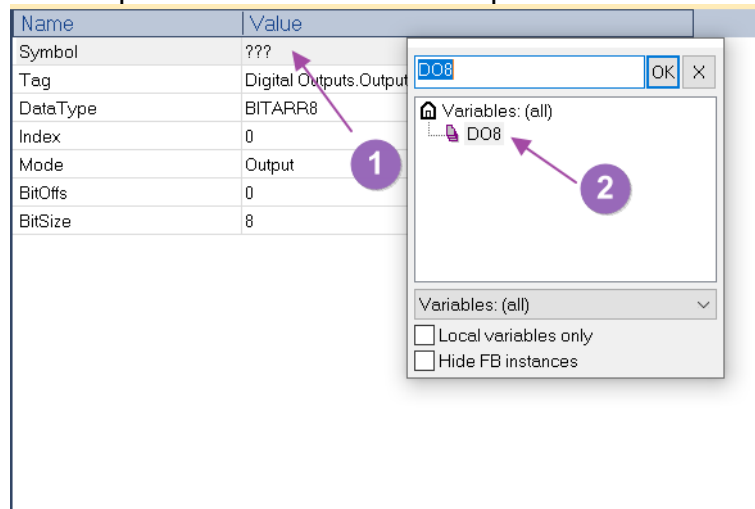
Output: Write local variables to master or slave variables

Bitoffs - Variable offset on Process Image.

BitSize - Variable size.

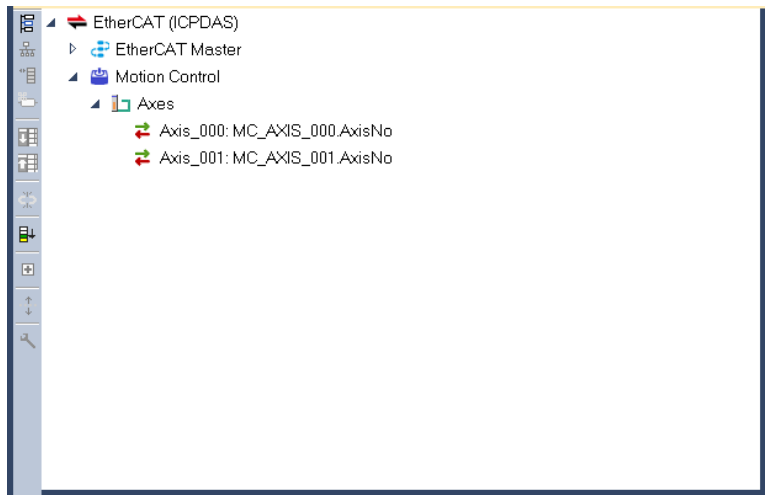


10. As shown in the figure below, you can double-click the Symbol parameter to map the local variables or drag and drop the local variables to map.





11. If the motion control function is enabled, the axis nodes are automatically generated under the 'Motion Control->Axes' node and mapped to the automatically generated 'MC\_AXIS\_xxx' variables in the global variables. The data type of 'MC\_AXIS\_xxx' variable is 'AXIS\_REF\_xxx'. These axis reference variables are used for PLCopen function block.



Name	Type	Di...	Pu...	Attrib.	S...
Global variables					
DO8	BOOL		<input type="checkbox"/>		<input type="checkbox"/>
MC_AXIS_000	lib:AXIS...		<input type="checkbox"/>		<input type="checkbox"/>
MC_AXIS_001	lib:AXIS...		<input type="checkbox"/>		<input type="checkbox"/>
RETAIN variables					


## 4. Quick Start

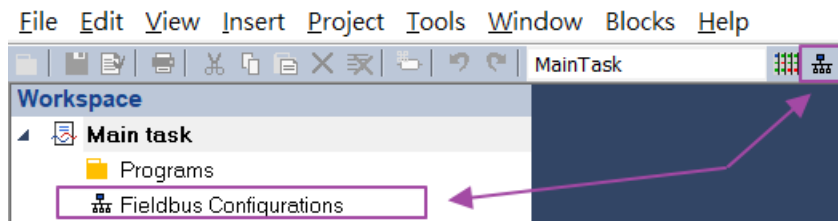
This chapter explains how to map PLC program variables to EtherCAT Fieldbus and read/write these variables to control the slave modules.


### 4.1. Control Slave Module Steps

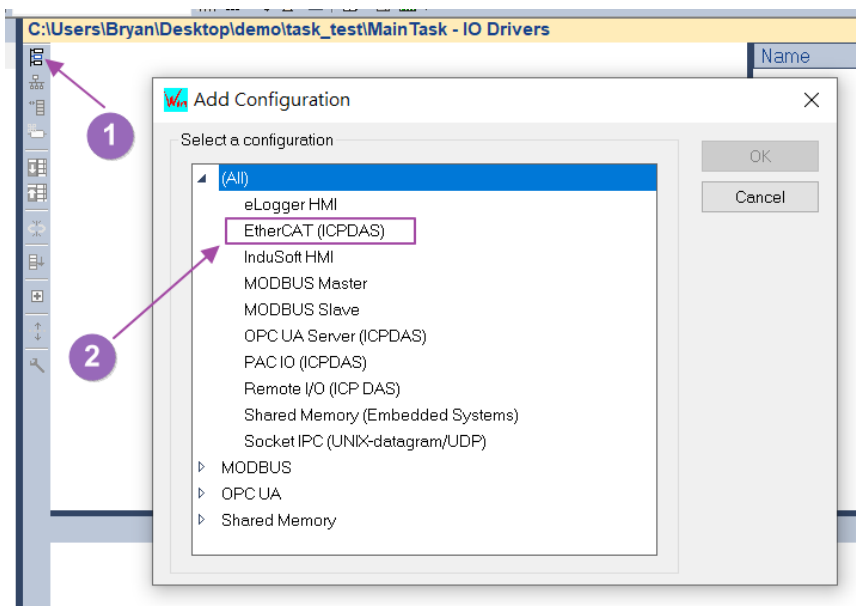
This section describes how to configure the EtherCAT Fieldbus and control the slave modules with the connected slave modules ECAT-2055 (DI/DO), ECAT-2011H (AI), ECAT-2028 (AO).

[Steps]

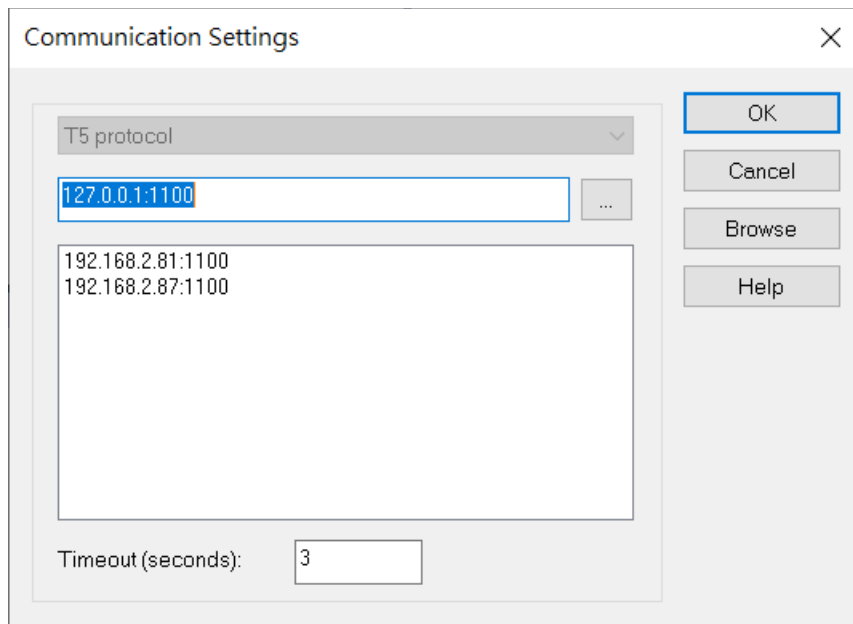
1. Please follow the steps A~D of the Slave Free-Run/DC Setup and Control section in the website user manual to create the ENI file and execute EtherCAT Runtime .
2. Open the Fieldbus Configurations window by clicking on the 'Fieldbus Configuration' button in the toolbar  or double clicking the 'Fieldbus Configuration' node in the workspace.



3. Add 'EtherCAT (ICPDAS)' configuration.  
(1) Click 'Insert Configuration'  button.  
(2) Select 'EtherCAT (ICPDAS)'.

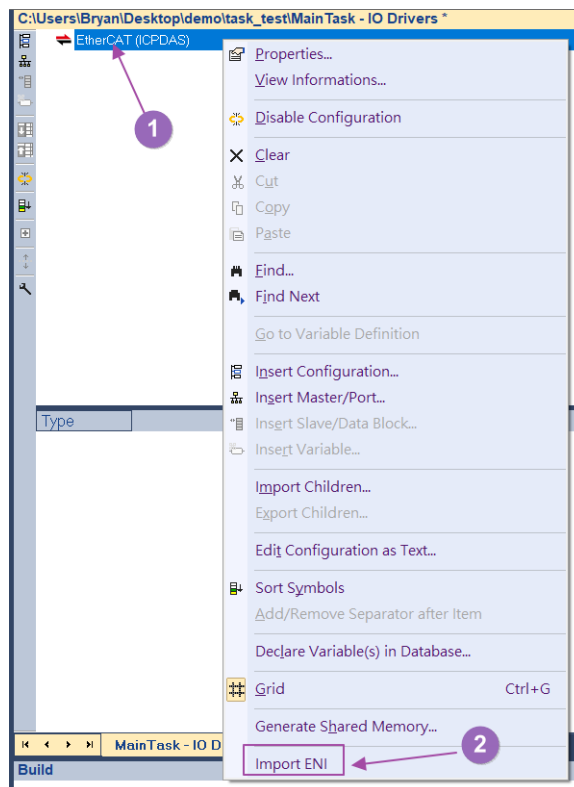


4. Change the communication settings of Win-GRAF according to the hardware IP address.

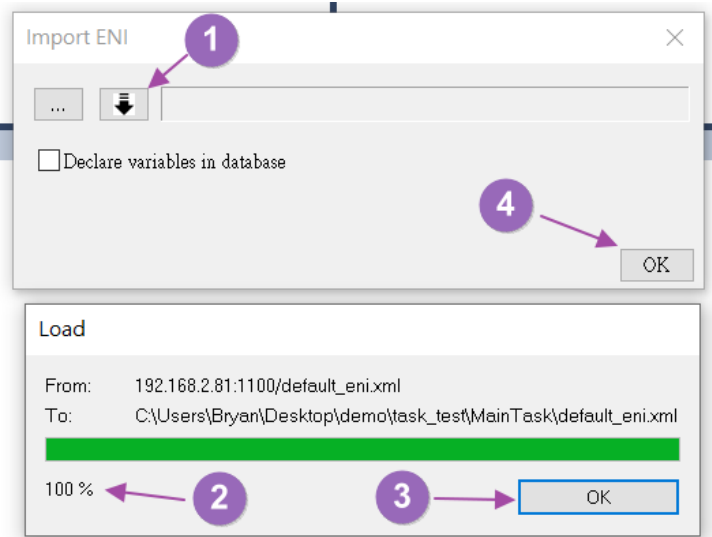


5. Automatically create a list of EtherCAT Process Image variables by importing ENI.

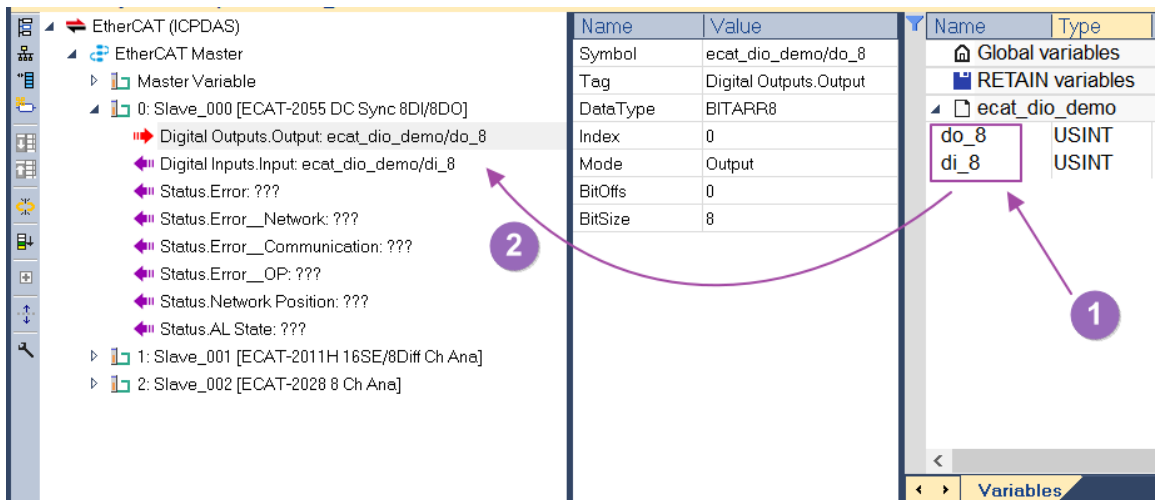
- (1) Right-click on the 'EtherCAT (ICPDAS)' node.
- (2) Click on the 'Import ENI' option in the right click menu.



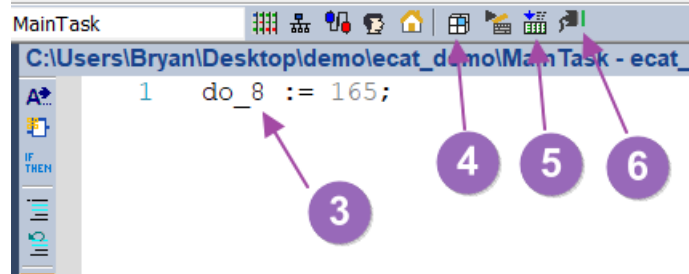
6. Use the Import ENI dialog to download the ENI file.
  - (1) Click on the 'Download ENI' button.
  - (2) Wait for progress to 100%.
  - (3) Click the 'OK' button in the download dialog to close the window.
  - (4) Click the 'OK' button in the Import ENI dialog to close the window.



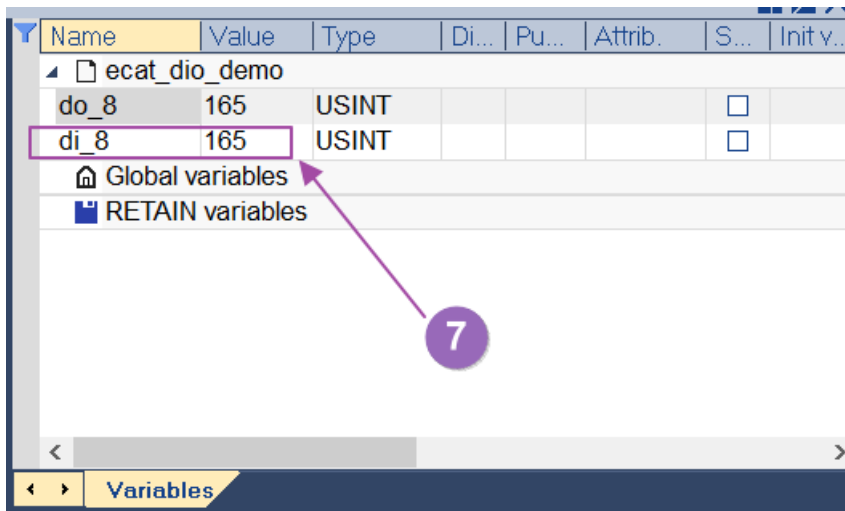
7. Mapping local variables to control slave modules.
  - I. Slave DI/DO module read/write control. Connect the ECAT-2055 (DI/DO) pins DIx to DOx.
    - (1) Add variables do\_8 (USINT), di\_8 (USINT).
    - (2) Map the variables do\_8, di\_8 to the slave ECAT-2055 variables Digital Outputs.Output, Digital Inputs.Input.



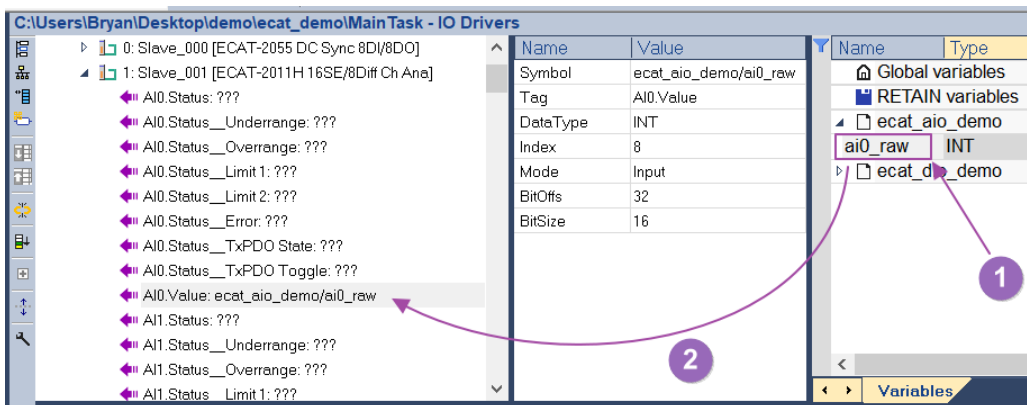
- (3) In the Structured Text program, write the variable do\_8 to the value 165.
- (4) Compile Win-GRAF program.
- (5) Download Win-GRAF program to hardware.
- (6) Run Win-GRAF program and perform online debugging.



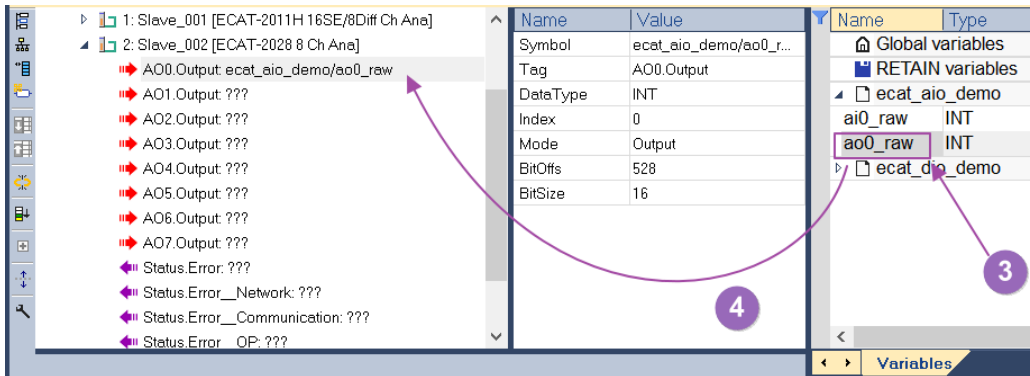
- (7) In online debug mode, check whether di\_8 in the variable list is 165.



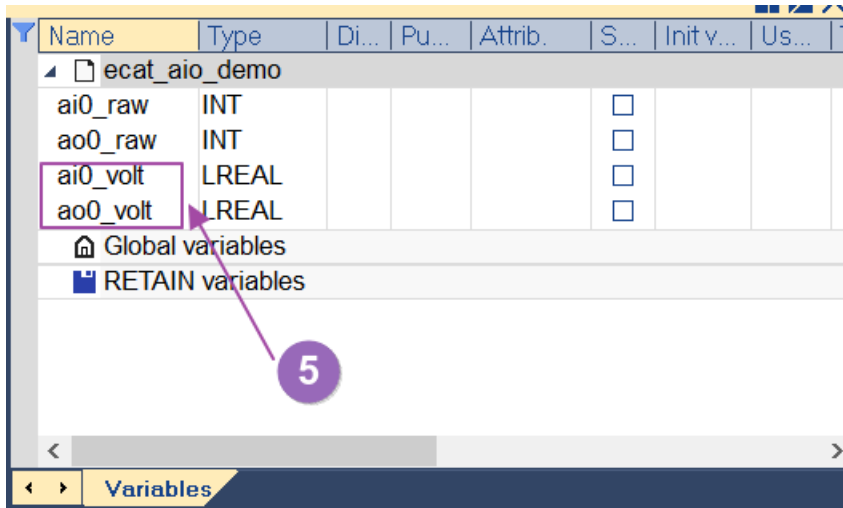
- II. Slave AI/AO module read/write control, connects slave ECAT-2011H (AI), ECAT-2028 (AO) channel 0 pins.
  - (1) Add variable ai0\_raw (INT).
  - (2) Map the variable ai0\_raw to the slave ECAT-2011H variable AI0.Value.



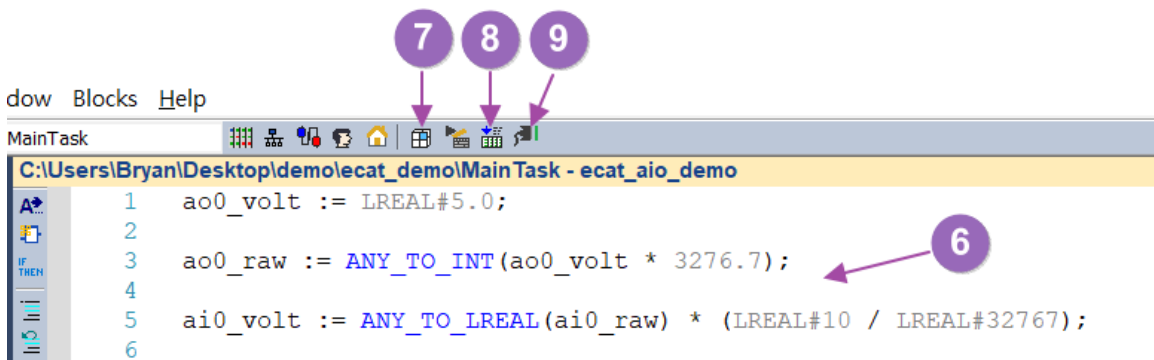
- (3) Add variable ao0\_raw (INT).
- (4) Map the variable ao0\_raw to the slave ECAT-2028 variable AO0.Output.



- (5) Add variable ai0\_volt (LREAL), ao0\_volt (LREAL).



- (6) AO/AI use default range ±10V. In the Structured Text program, output AO 5V.
- (7) Compile Win-GRAF program.
- (8) Download Win-GRAF program to hardware.
- (9) Run Win-GRAF program and perform online debugging.



(10) In online debug mode, check whether ai0\_volt in the variable list is 5V.

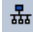
Name	Value	Type	Di...	Pu...	Attrib
ecat_aio_demo					
ai0_raw	16368	INT			
ao0_raw	16383	INT			
ai0_volt	4.99527	LREAL			
ao0_volt	5	LREAL			
Global variables					
RETAIN variables					

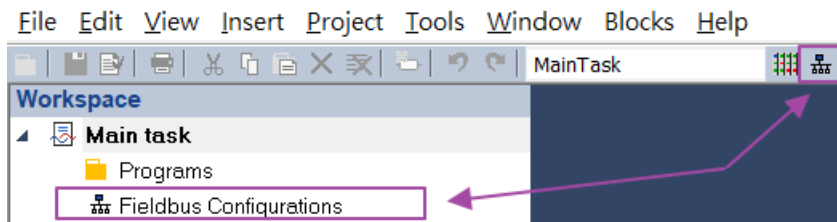
Variables


## 4.2. Motion Control Steps

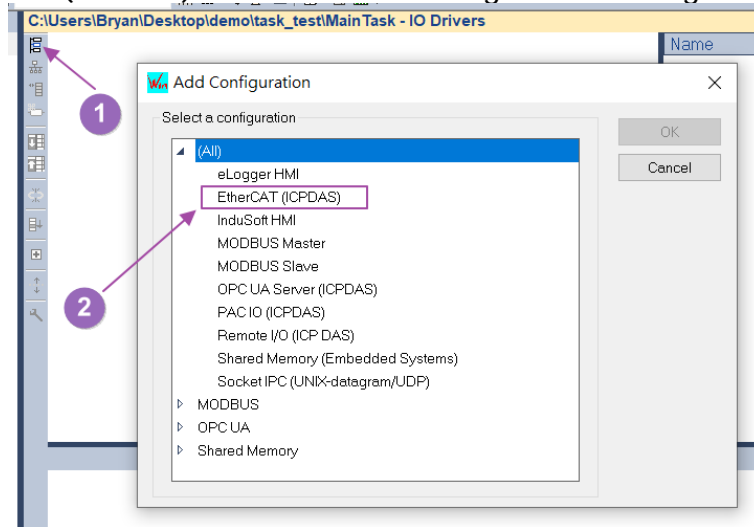
This section illustrates how to use the EtherCAT Fieldbus motion control function by connecting the CiA402 slave module.

[Steps]

1. Please follow the steps A~F in the Motion Control Setup and Control section of the web site user manual to create the ENI file and run EtherCAT Runtime.
2. Start the Win-GRAF workbench and create a new project.
3. Open the Fieldbus Configurations window by clicking on the 'Fieldbus Configuration' button in the toolbar  or double clicking the 'Fieldbus Configuration' node in the workspace.

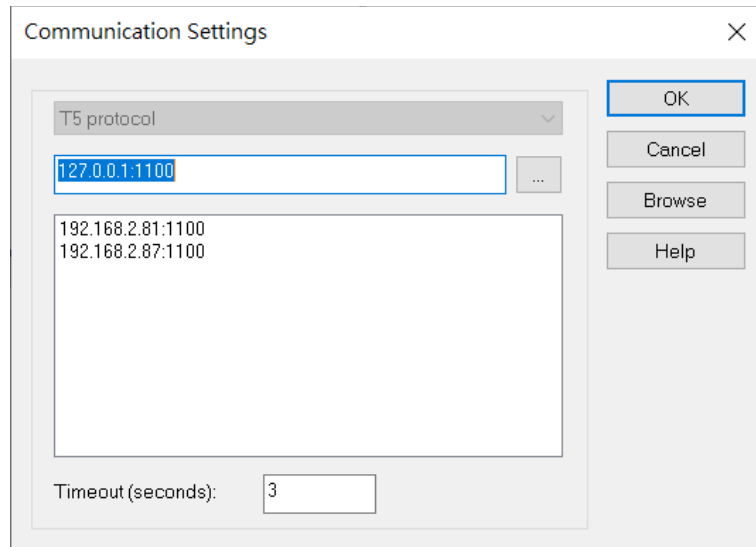


4. Click 'Insert Configuration'  button of the toolbar on the left of the 'IO Drivers' editor and select 'EtherCAT (ICPDAS)' from the 'Add Configuration' dialog.

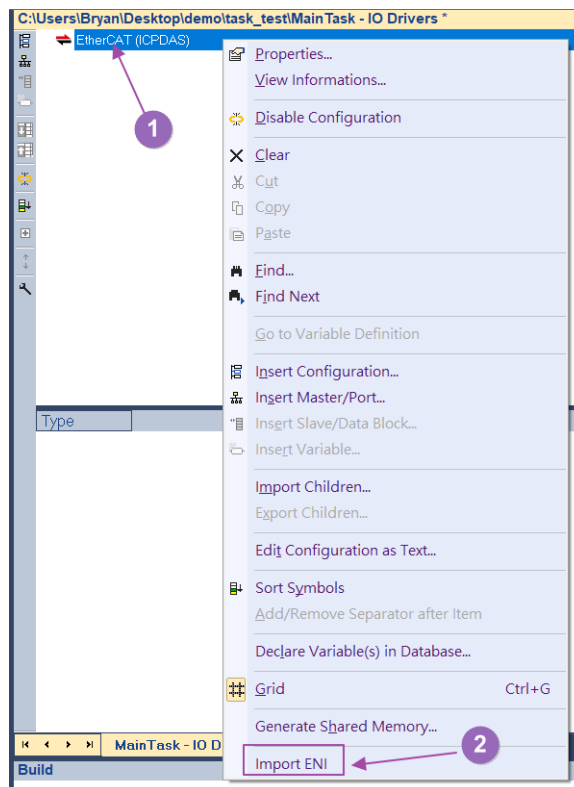


5. Change the communication settings of Win-GRAF according to the hardware IP address.







- Right-click on the 'EtherCAT (ICPDAS)' node and click on the 'Import ENI' option in the right-click menu.



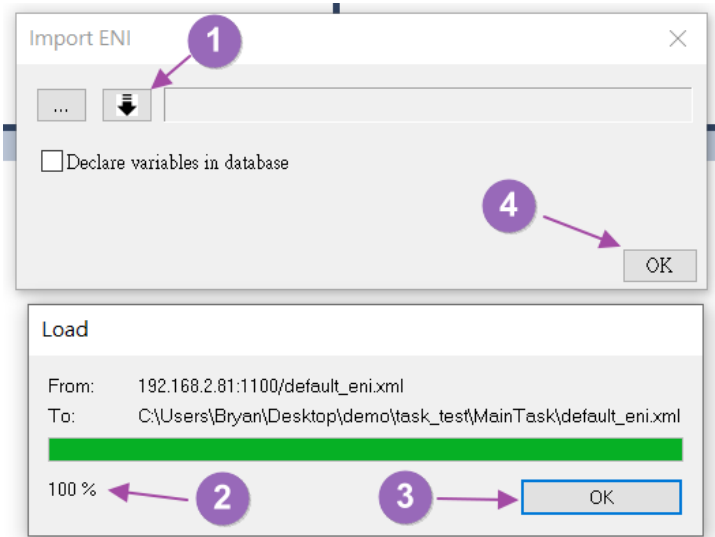
- Click the 'Download ENI' button from the Import ENI dialog to download the ENI file, wait for 100% progress and click the 'OK' button on the Download dialog to close the window, and then click the OK button on the Import ENI dialog to close the Import ENI dialog. The following describes the parameters and buttons of the Import ENI dialog.

 - Open the ENI file to create the configuration.

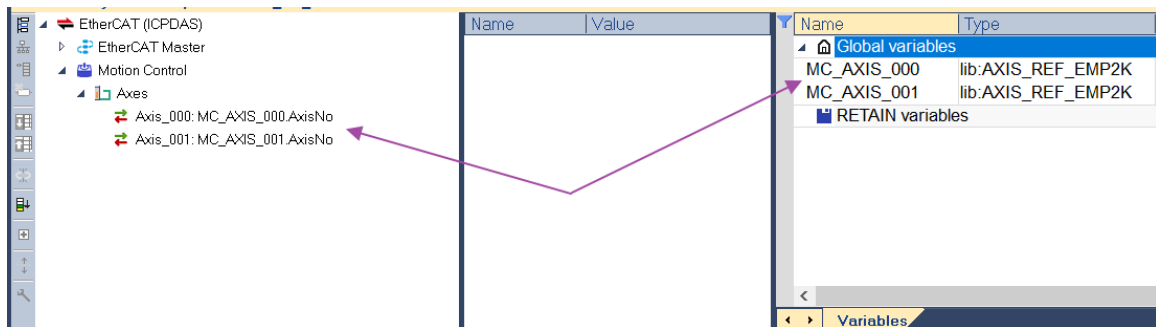
 - Download the ENI file from the hardware to create the configuration.

Declare variables in database - Automatically create and map the global variables to the

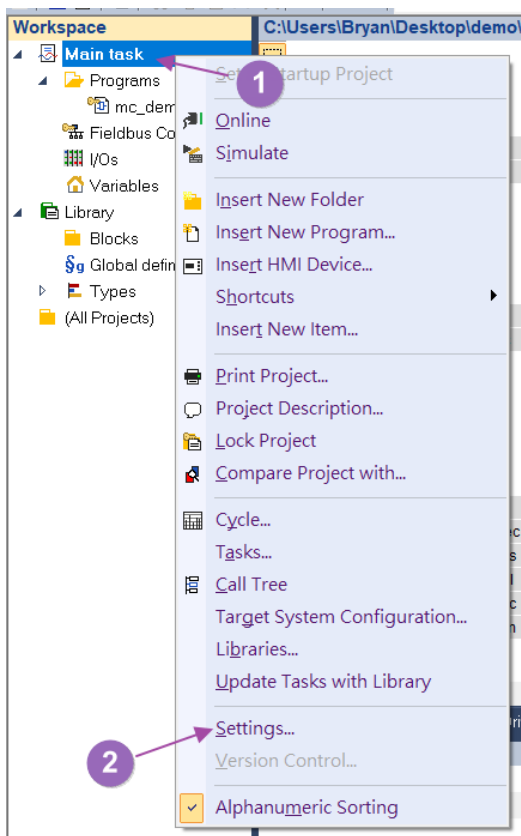
Process Image variables.



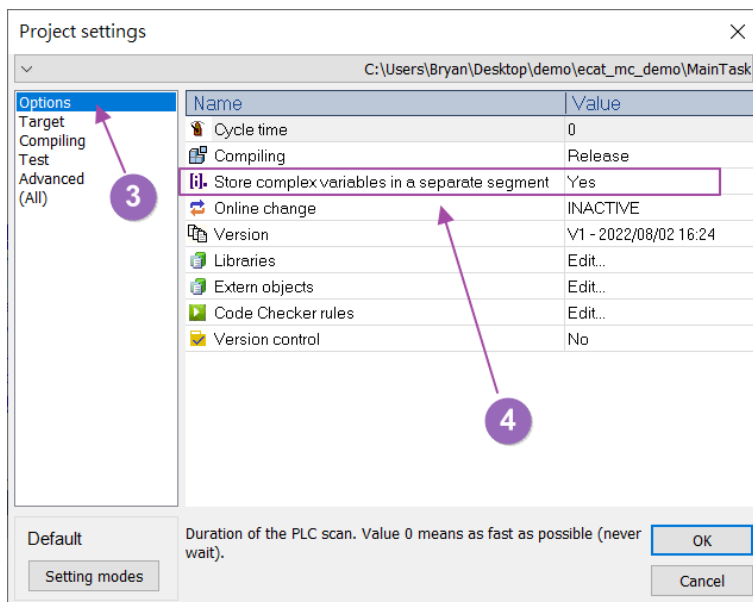
- 8. Verify that the 'Motion Control->Axes->Axis\_xxx' variable is generated under the 'EtherCAT (ICPDAS)' node and mapped to the automatically generated 'MC\_AXIS\_xxx' variable in the global variable.



- 9. Enable Store complex variables in a separate segment.  
(1) Right-click on the project node in the workspace.  
(2) Click on the 'Settings' option in the right click menu.

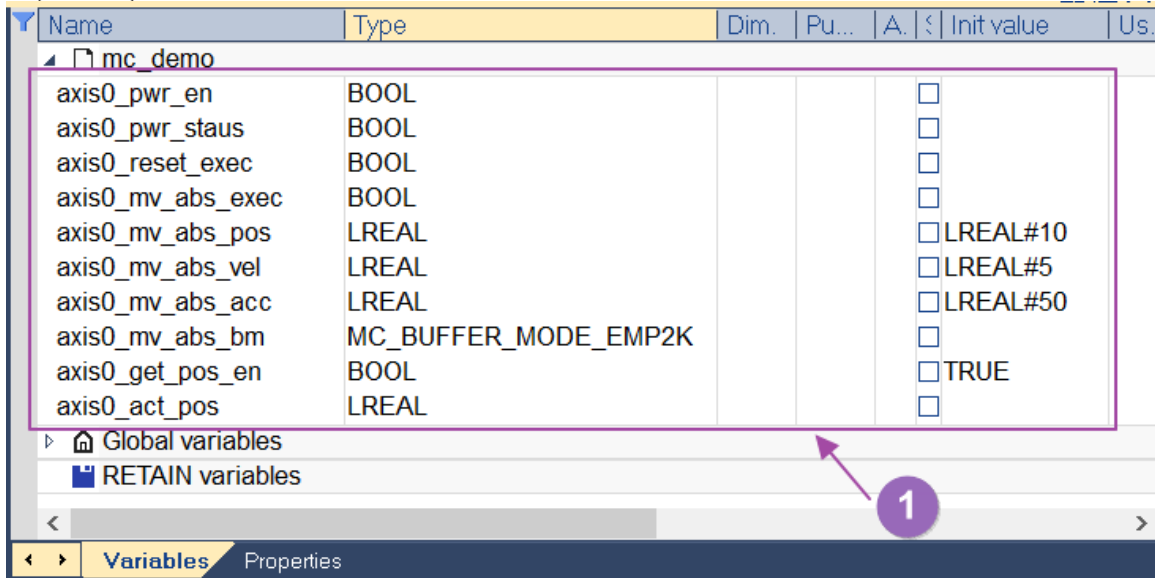


- (3) Click on the 'Options' item.
- (4) Set the Store complex variables in a separate segment function to Yes.

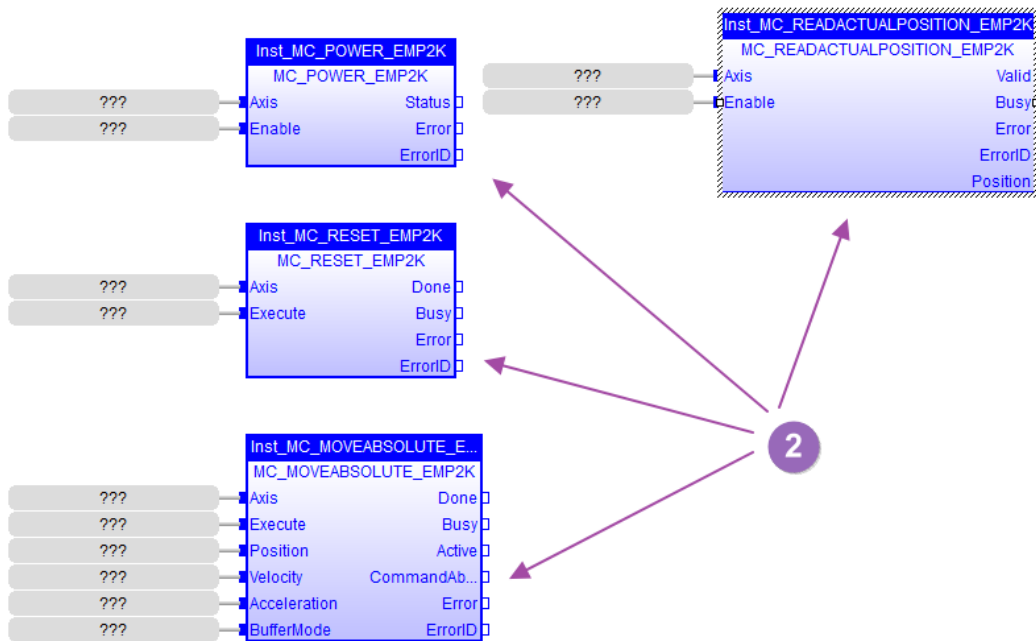


10. Programming PLCopen Function Block motion control program.

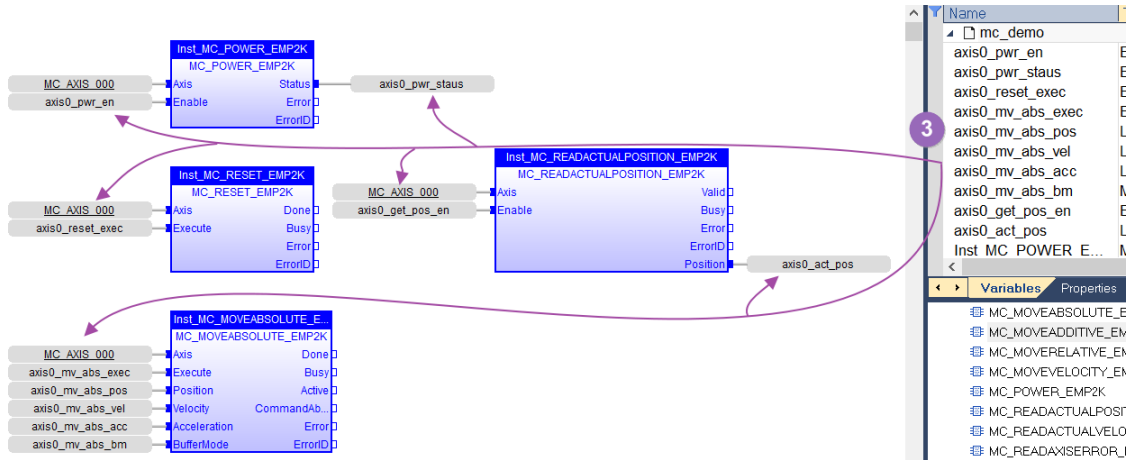
- (1) Add variable axis0\_pwr\_en (BOOL), axis0\_pwr\_status (BOOL), axis0\_reset\_exec (BOOL) , axis0\_mv\_abs\_exec (BOOL), axis0\_mv\_abs\_pos (LREAL, 10), axis0\_mv\_abs\_vel (LREAL, 5) , axis0\_mv\_abs\_acc (LREAL, 50), axis0\_mv\_abs\_bm (MC\_BUFFER\_MODE\_EMP2K), axis0\_get\_pos\_en (BOOL, TRUE) , axis0\_act\_pos (LREAL)



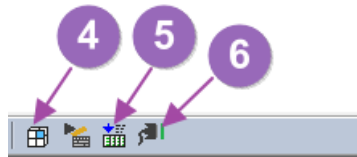
- (2) Add MC\_POWER\_EMP2K, MC\_RESET\_EMP2K, MC\_MOVEABSOLUTE\_EMP2K, MC\_READACTUALPOSITION\_EMP2K Function Block in the Function Block Diagram (FDB) Editor.



(3) Connect each variable to the Function Block.

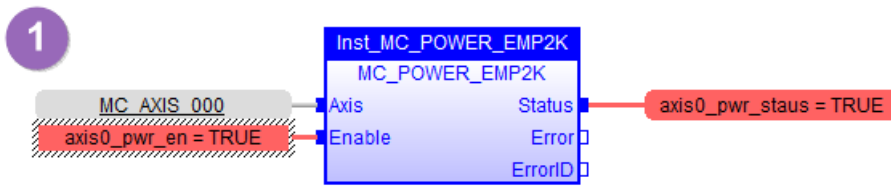


- (4) Compile Win-GRAF program.
- (5) Download Win-GRAF program to hardware.
- (6) Run Win-GRAF program and perform online debugging.

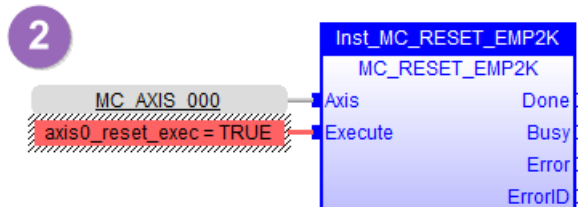


11. Absolute position movement control in online debugging mode.

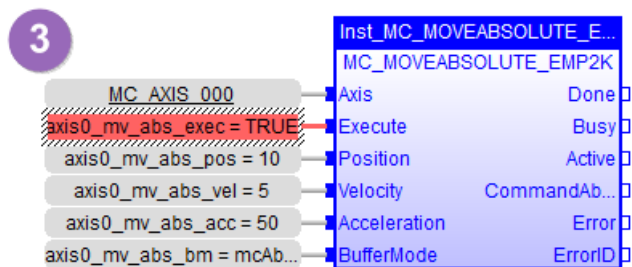
(1) Set axis0\_pwr\_en = TRUE to power ON the single axis.



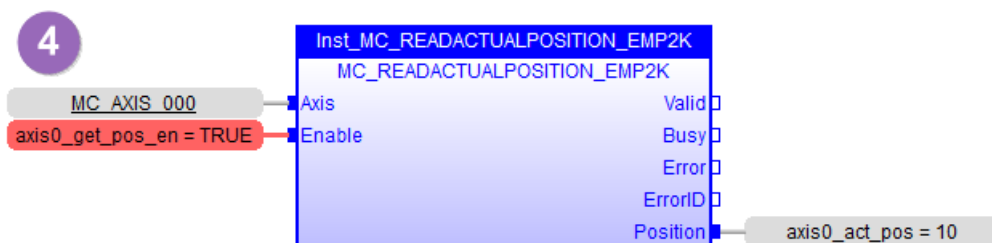
(2) If an error occurs in a single axis, set axis0\_reset\_exec = TRUE to clear the error.



(3) Set axis0\_mv\_abs\_exec = TRUE to start absolute position movement.



(4) Verify that the final movement position of the single axis matches the input position.



# Revision History

Revision	Date	Description
1.0	2022/07	Initial issue