

Packing List

In addition to this guide, the package includes the following items:



iSN-101 or iSN-101/DIN



CA-LLD-DC100-L010(30)



CA-LLD-EC-L030



CA-LLD-DP100



Screw Driver

The **CA-LLD-DC100-L010** and **CA-LLD-EC-L030** are included for iSN-101/S and iSN-101/S/DIN.

The **CA-LLD-DC100-L030** and **CA-LLD-EC-L030** are included for iSN-101/S2 and iSN-101/S2/DIN.

The **CA-LLD-DP100** are included for iSN-101/S3 and iSN-101/S3/DIN.

Resources

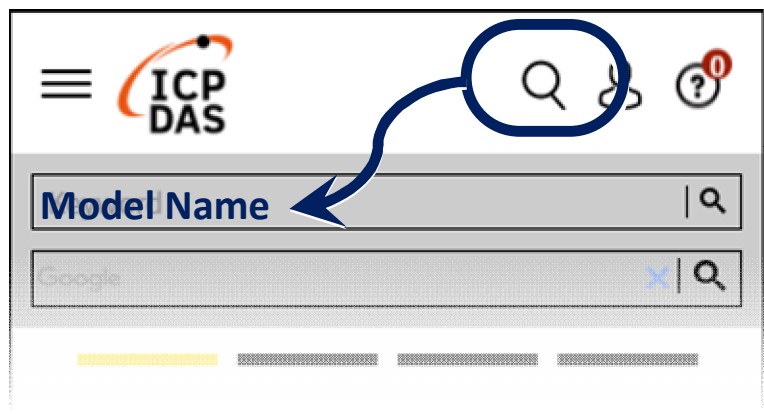
How to search for drivers, manuals and spec information on ICP DAS website.

Technical Support

service@icpdas.com

www.icpdas.com

- For Mobile Web



- For Desktop Web



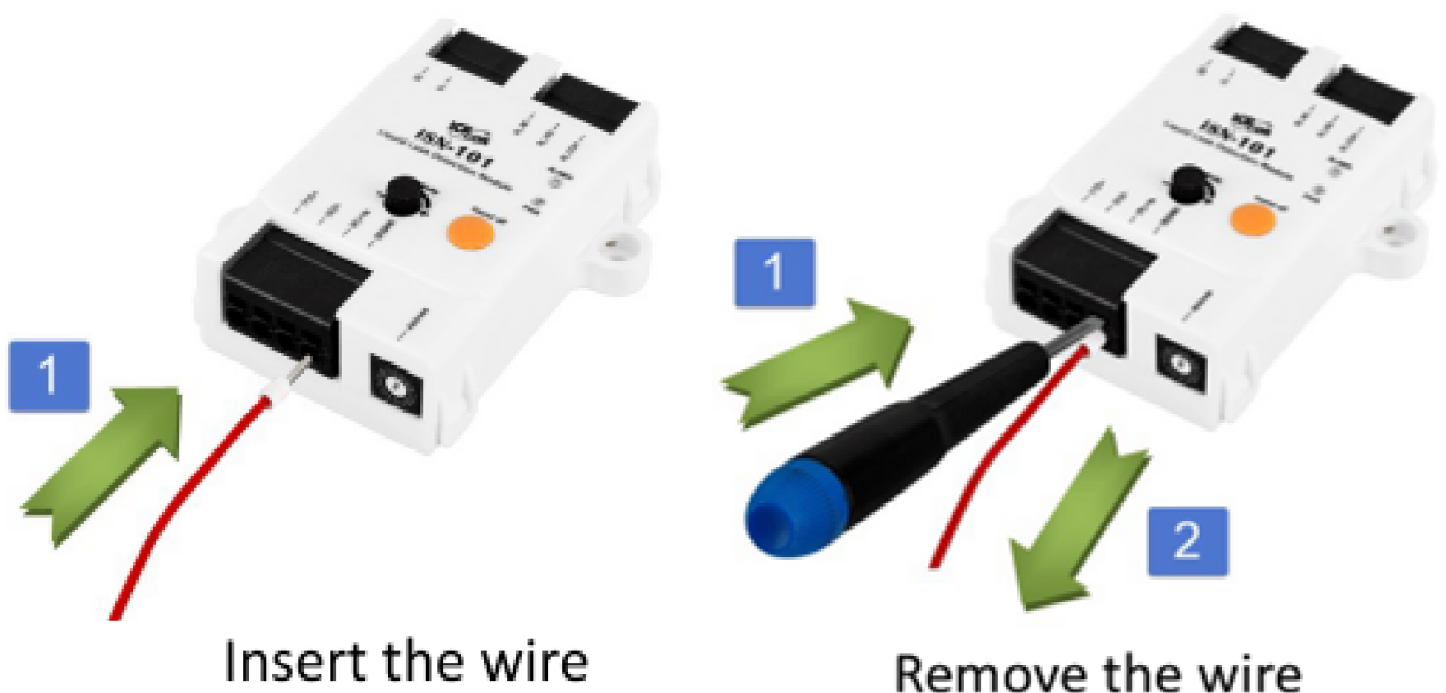
DIP Switch and Jumper Settings

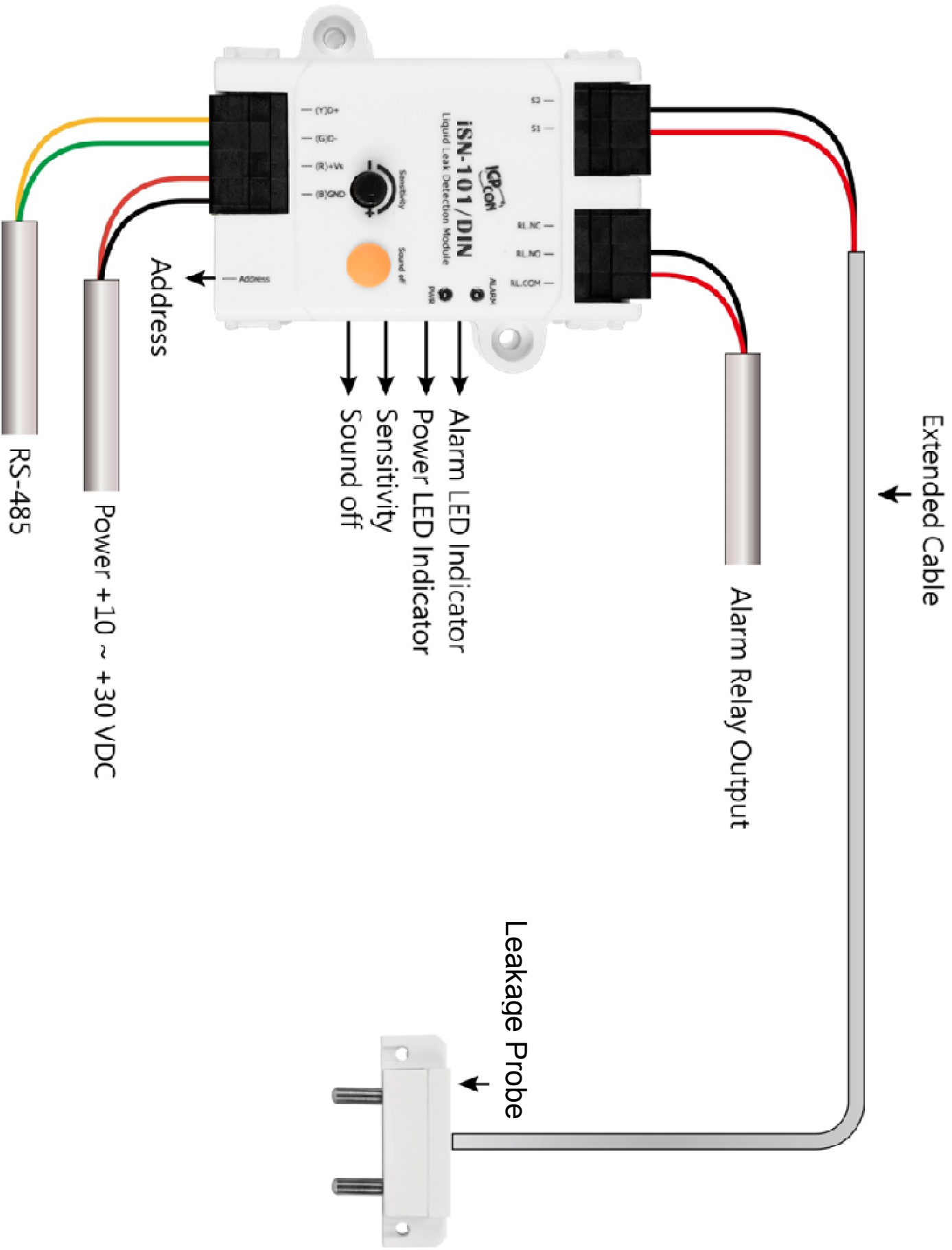
	SW1	ON	DCON Protocol
		OFF	Modbus RTU Protocol
	SW2	ON	Software Configuration
		OFF	Hardware Configuration
	SW3	ON	High Node Address
		OFF	Low Node Address
	SW4	ON	INIT Mode
		OFF	Normal Mode

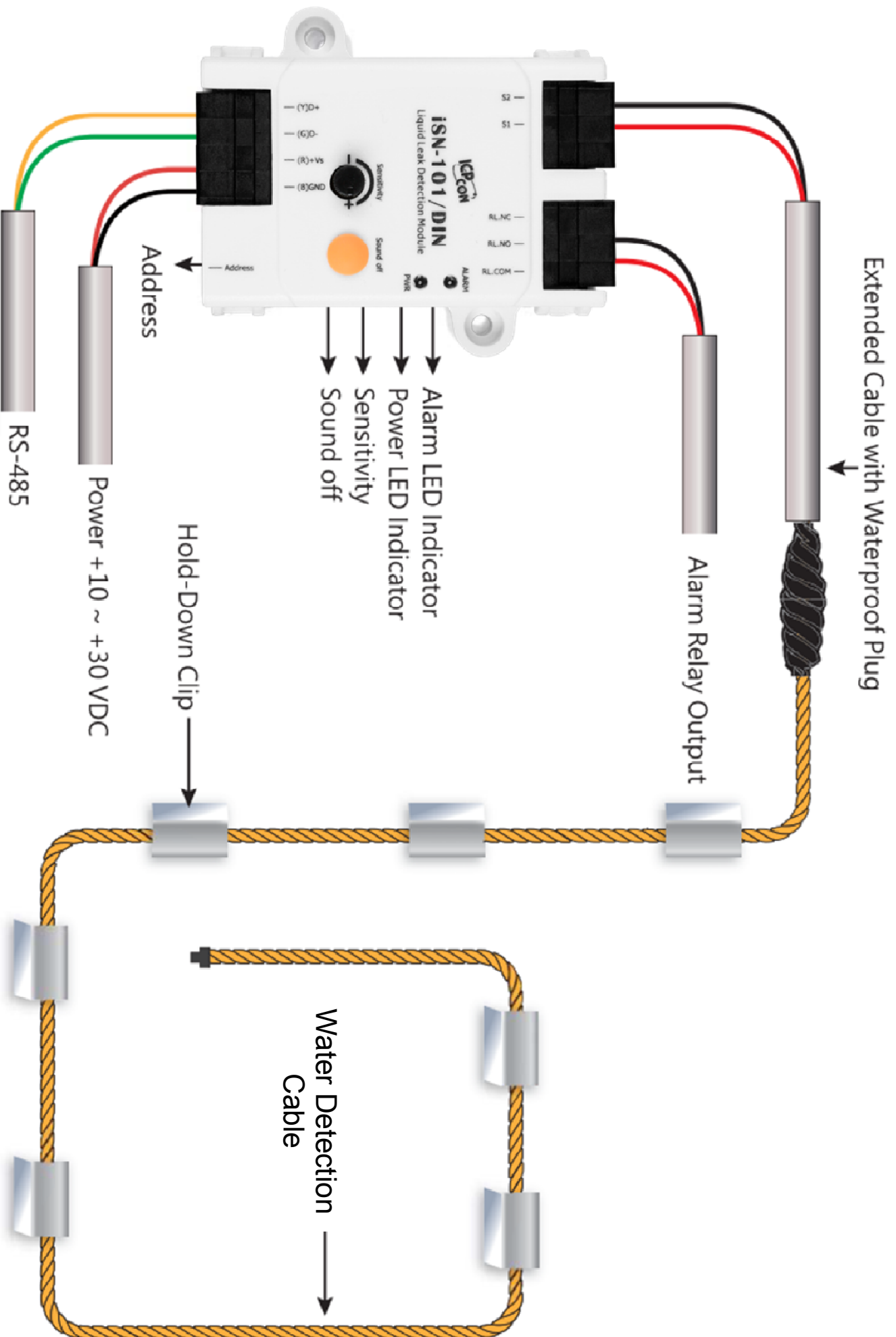
Address Settings via Hardware Configuration

		When DIP Switch DIP3=OFF Rotary Switch 0 to F for Node Addresses 96 to 111 (Low Node Address)
		When DIP Switch DIP3=ON Rotary Switch 0 to F for Node Addresses 112 to 127 (High Node Address)

Wire Connections







Extended Cable with Waterproof Plug

Alarm Relay Output

Water Detection Cable

Hold-Down Clip

Power +10 ~ +30 VDC

RS-485

Address

ICB CON
ISN-101/DIN
 Liquid Leak Detection Module