

Packing List

In addition to this guide, the package includes the following items:



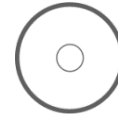
VP-1238-CE7



I/O socket cover * 3



RJ-45 Waterproof Assembly



Win-GRAF PAC & Software Utility CD



Touch Pen



Screw Driver



Panel clip * 4
M4 x 30L Screw * 4

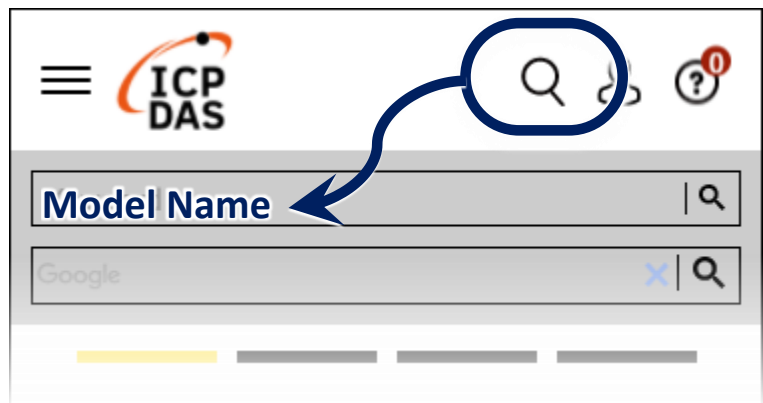


microSD card and SD/microSD adapter

Resources

How to search for drivers, manuals and spec information on ICPDAS website.

- For Mobile Web



- For Desktop Web



1 Setting up ViewPAC

- 1) Ensure that the rotary switch is set to the “0” position.
- 2) Connect the positive terminal (+) of the power supply to the terminal PWR and the negative terminal (-) of the power supply to the P.GND.

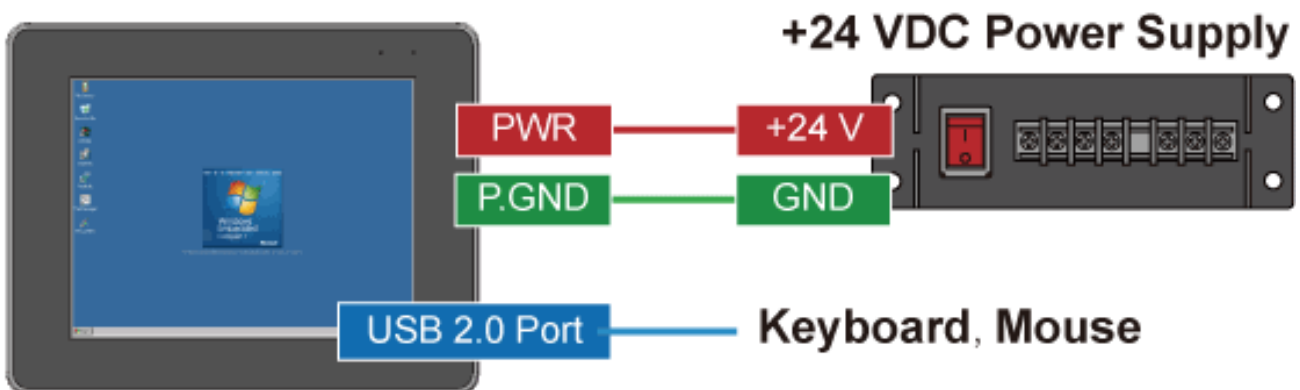


The input range of power supply is +12 to +48 V_{DC}.

- 3) Connect the USB mouse or USB keyboard to the USB port.



The rotary switch must be placed in the “0” position



- 4) Turn on the ViewPAC.

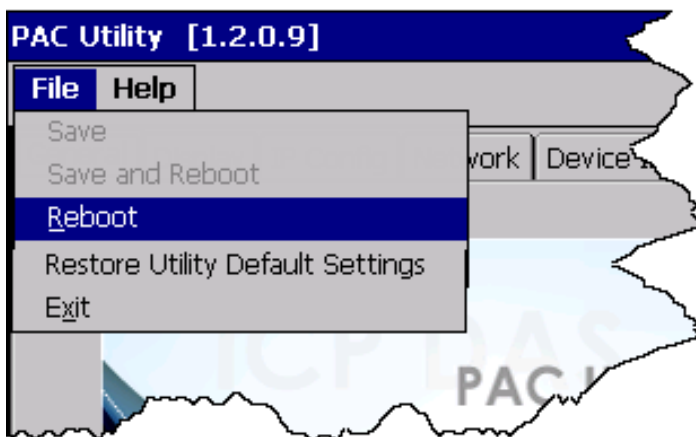
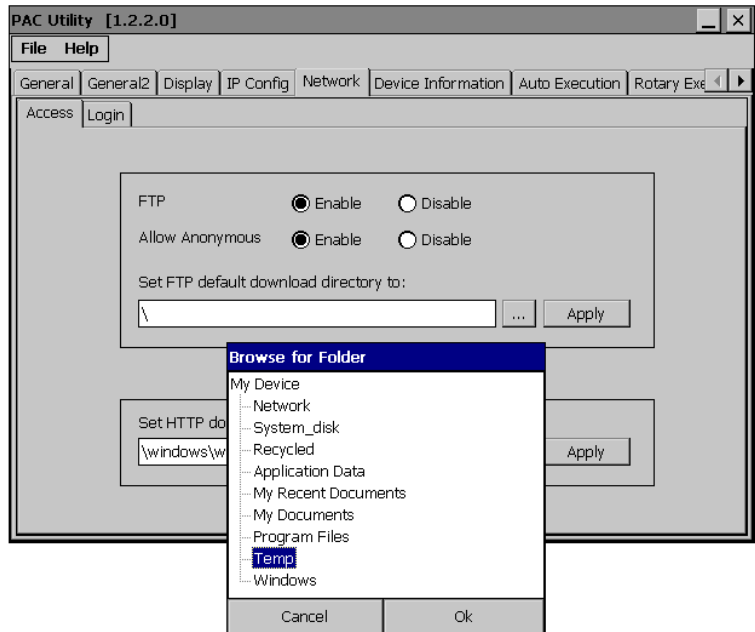
2 Using PAC Utility to Manage the ViewPAC

PAC Utility allows user quickly and easily manage and configure the ViewPAC.

1) Double-click the PAC Utility shortcut on the desktop.



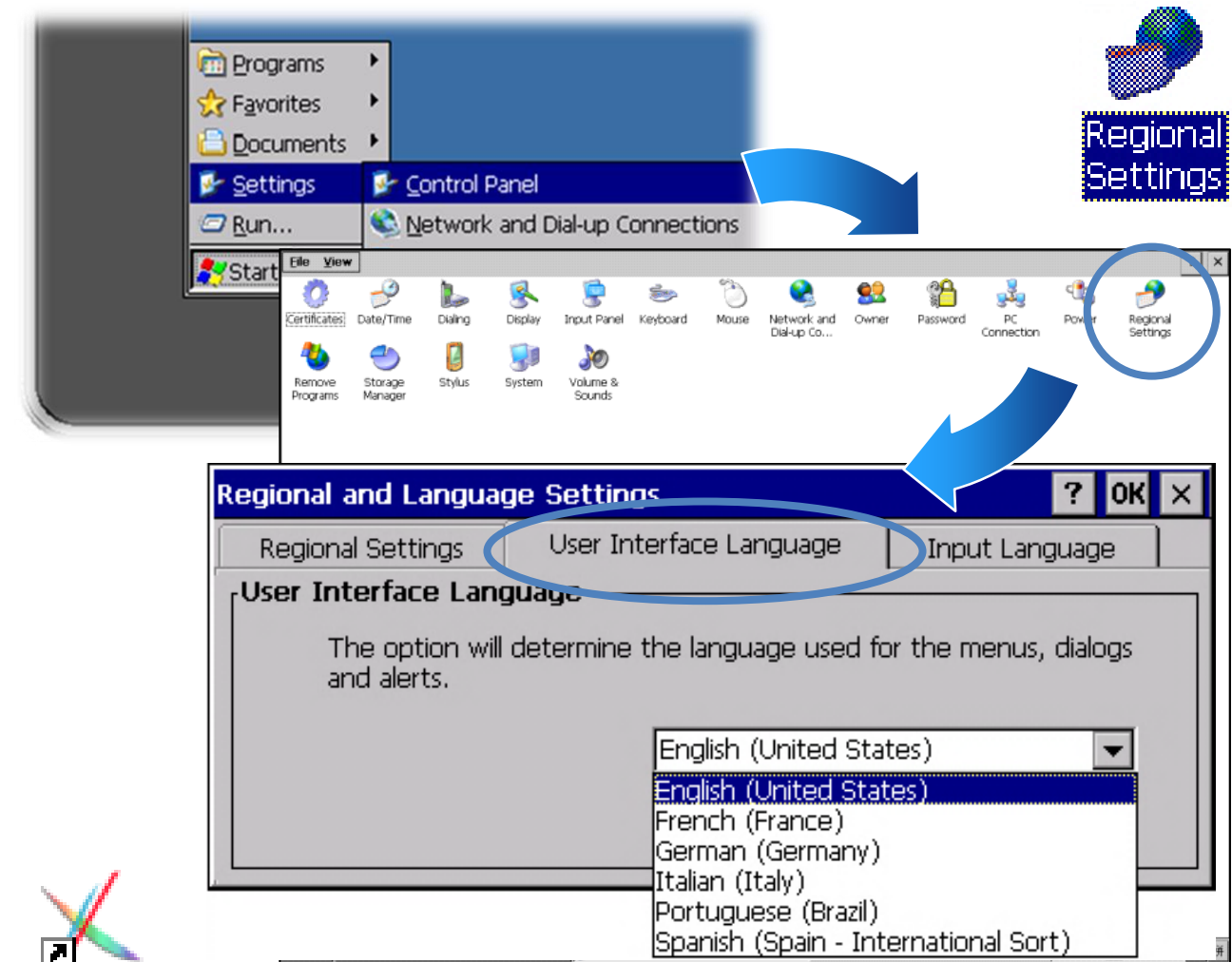
2) Configure IP address (DHCP),
FTP Server, Auto Execution
files, etc.



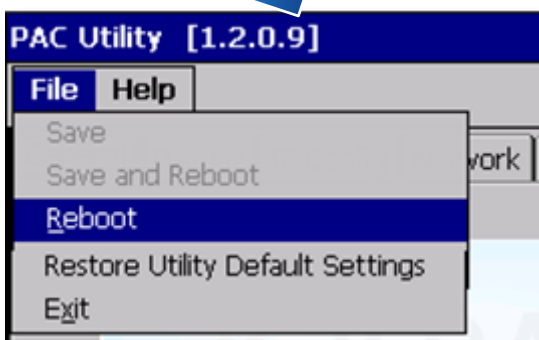
3) Reboot the ViewPAC for
changes to take effect.

3 Changing the User Interface Language

- 1) Click Start menu, point to Settings, click Control Panel, and then click the Regional Settings.
- 2) Click User Interface Language tab, choose to your local language, and then click OK.



PAC_Utilit..



- 3) Run the PAC Utility, click Reboot for changes to take effect.