



# PET-7200/ET-7200 Quick Start

V1.2, March 2018

## Supported Products

- ET-7200 Series
- ET-7200-UT Series
- PET-7200 Series

## Technical Support

PET-7200 / ET-7200 User Manual

[http://ftp.icpdas.com/pub/cd/6000cd/napdos/et7000\\_et7200/document/](http://ftp.icpdas.com/pub/cd/6000cd/napdos/et7000_et7200/document/)

## What's in the Box?



**PET-7200/ET-7200 Module**



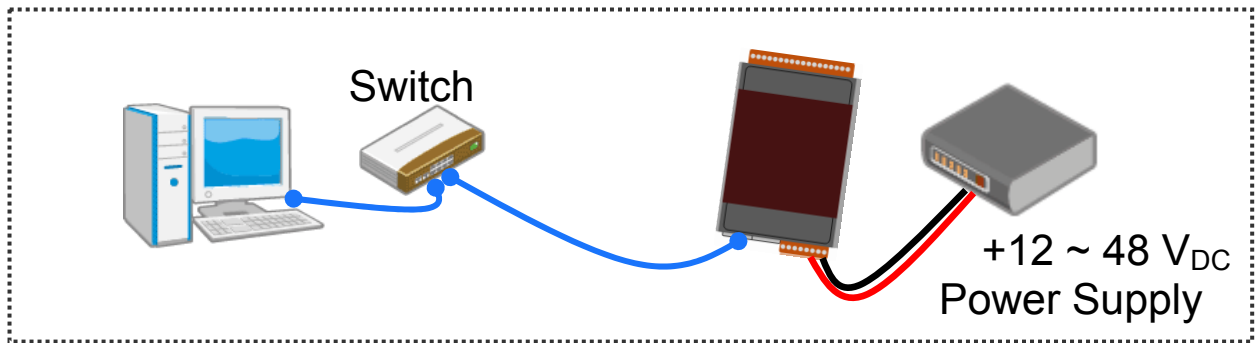
**Quick Start**

# 1 Factory Default Settings

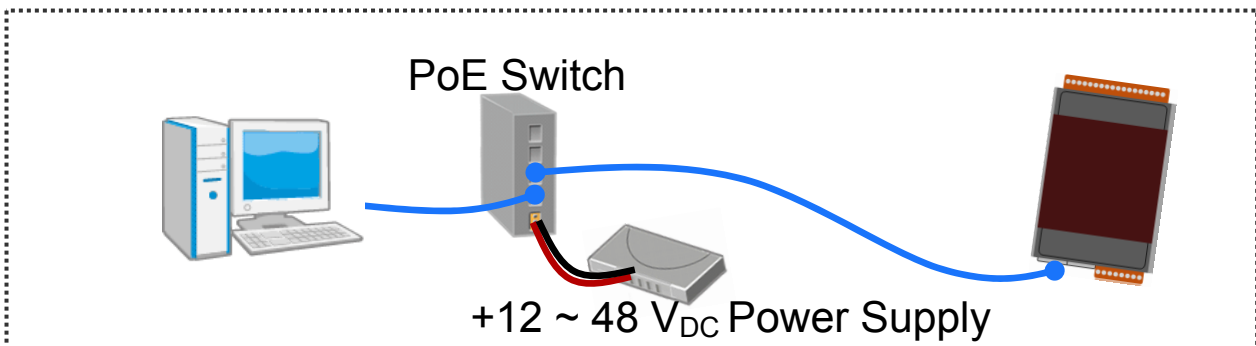
Network Connection	Default	Authentication	Default
IP Address:	192.168.255.1	User name:	Admin
Subnet Mask:	255.255.0.0	Password:	Admin
Gateway:	192.168.0.1		

# 2 Connecting to Network, Computer and Power

## Non-PoE



## PoE

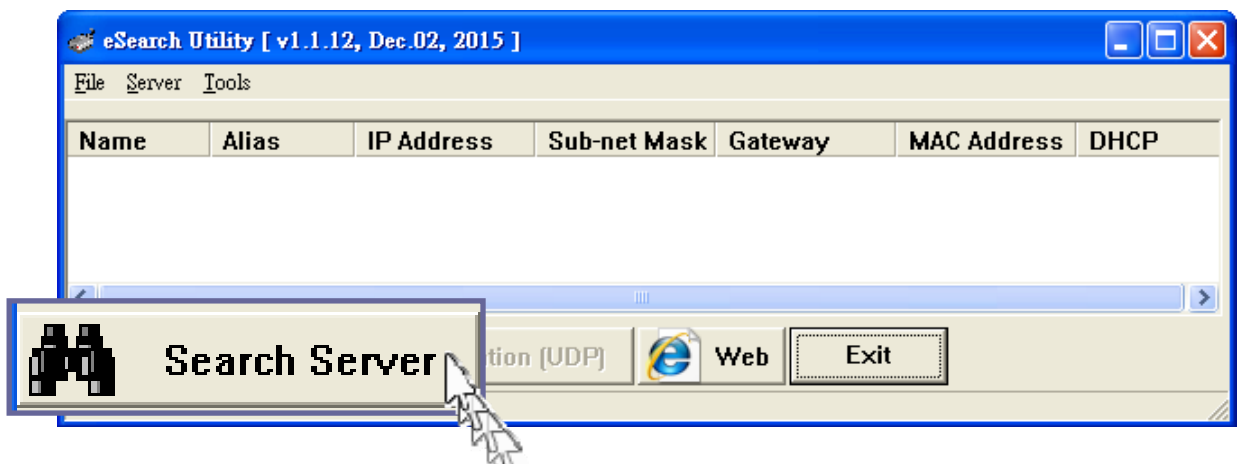


# 3-1 Assigning a Valid IP Address - Method 1

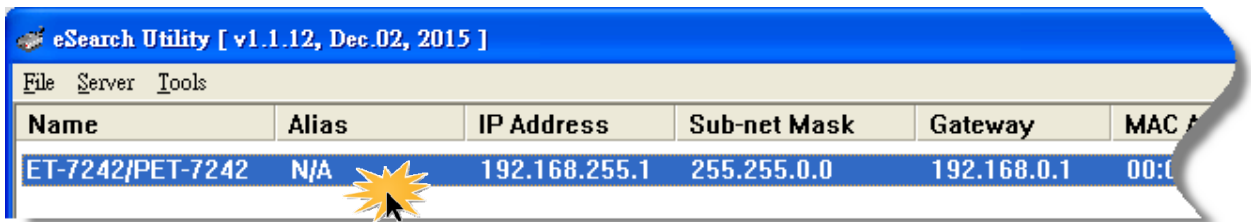
1) Install eSearch from

<http://ftp.icpdas.com/pub/cd/6000cd/napdos/software/esearch/>

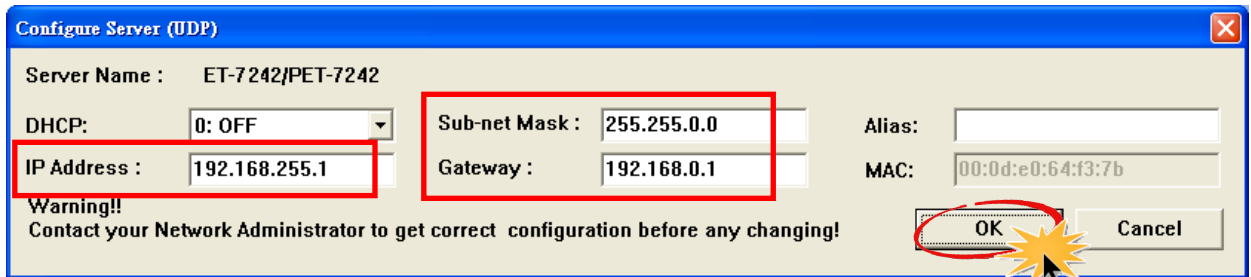
2) Launch eSearch and click "Search Server"



### 3) Double-click the name for your module on the list



### 4) Enter the network configuration and click “OK”



### 5) Repeat Step 2. to search the module again

To make sure your modifications take effect.

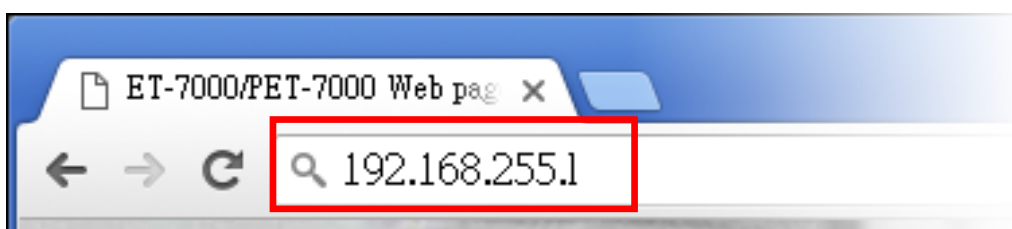
## 3-2 Assigning a Valid IP Address - Method 2

#### 1) Set the IP configuration on your computer

The ET-7200 module comes with the default IP address of 192.168.255.1, you must choose an IP address for the computer in the range of 192.168.255.2 – 192.168.255.253 that is not in use.

#### 2) Launch your web browser to go to the ET-7200 web interface

Enter the factory default IP address **192.168.255.1** for the ET-7200 as the URL in browser and press Enter.

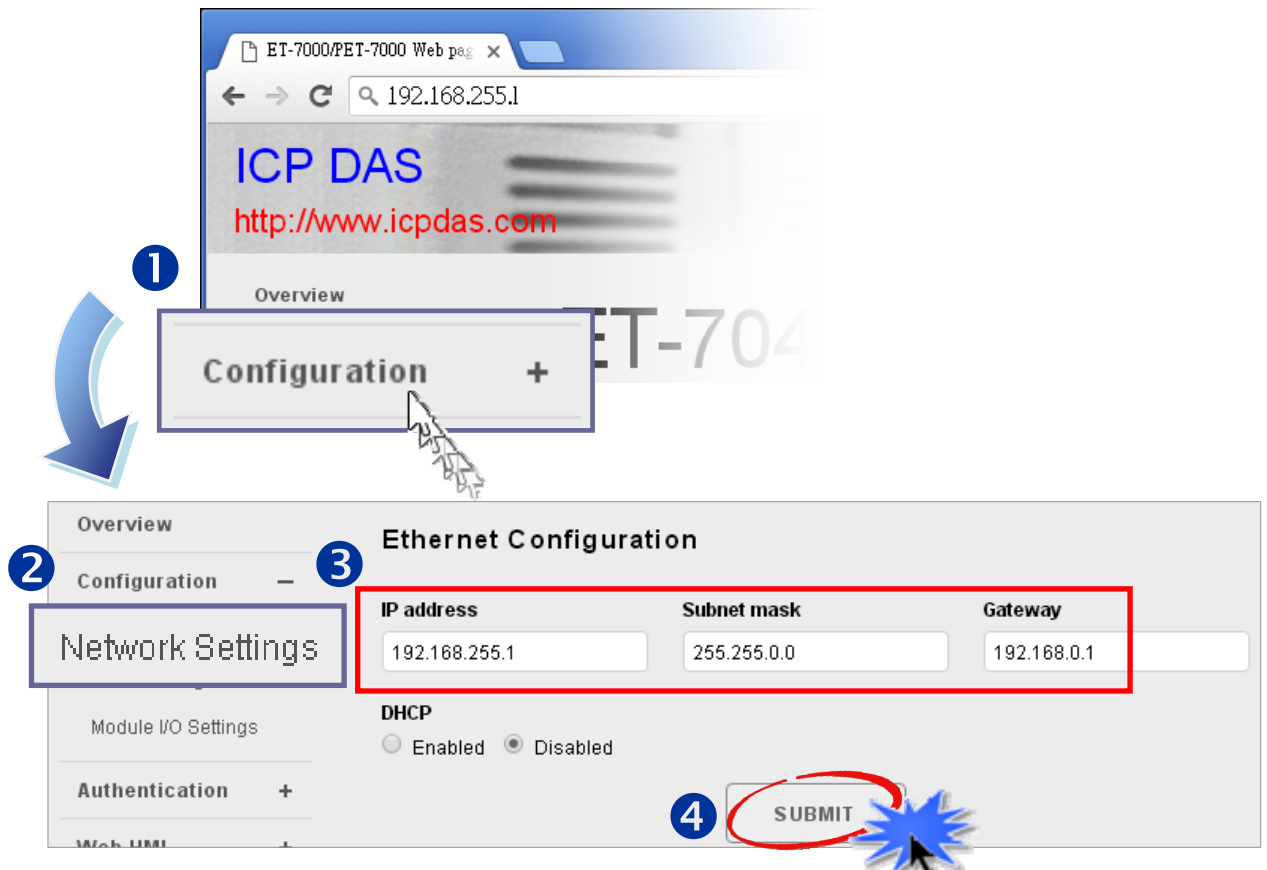


### 3) Fill out the User name and Password

Fill out the factory default user name and password “Admin” and then click “OK”.

### 4) Assign a valid IP address for your ET-7200 module

1. Click “Configuration”
2. Click “Network Settings” in the sub-menu
3. Enter a valid IP address for your ET-7200 module.
4. Click the “SUBMIT” button.



### 5) Restore the original IP address to your computer

## 4 Logging in to the ET-7200 Module

- 1) Enter the new IP for the ET-7200 as the URL in browser
- 2) Fill out the User name and Password “Admin” again
- 3) Welcome to ET-7200 web site