

Rextorm

PM - 521

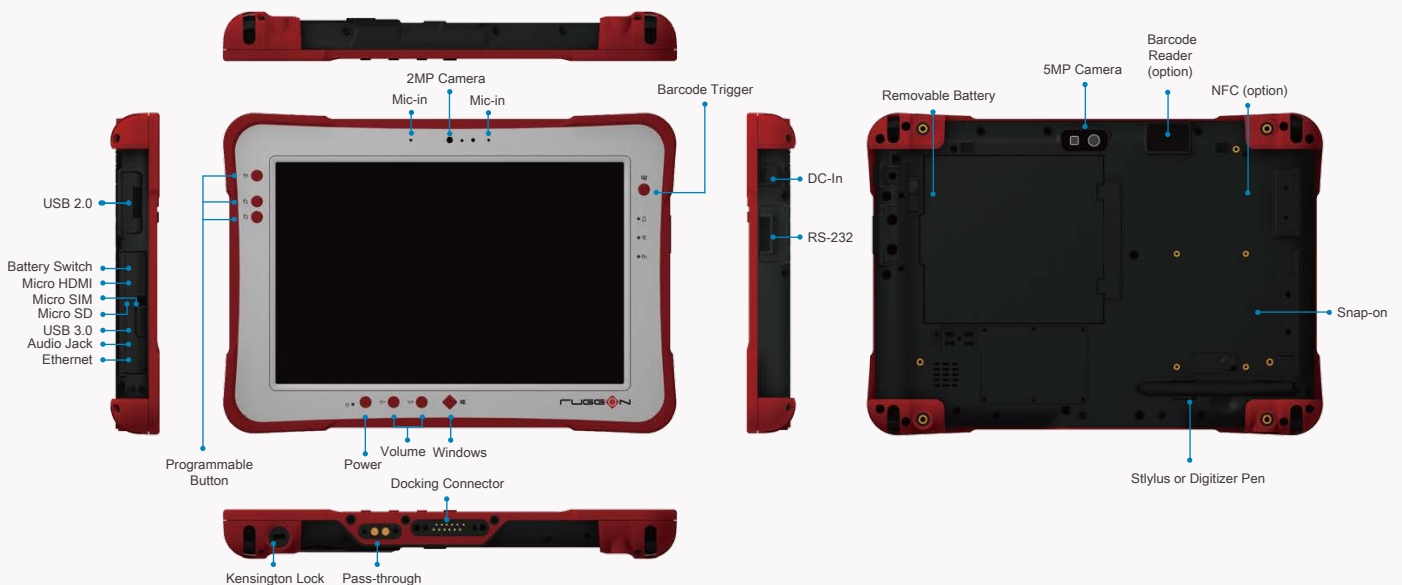
10.1" Fully Rugged Windows Pad

Performance &
Battery Life,
Perfectly Balanced



- ◆ Intel® Atom™ processor E3827 1.75GHz
- ◆ IP65, MIL-STD-810G, 5 feet drop resistance
- ◆ 1000 nits sunlight readable display
- ◆ Capacitive multi-touch supports glove touch, water rejection, palm rejection, 2mm hard tip stylus ; digitizer by request
- ◆ GNSS, Wi-Fi, Bluetooth, optional 4G LTE
- ◆ Hot swappable battery design
- ◆ Wide expansion design for data capture
- ◆ Dual pass-through connector for WLAN, GNSS, WWAN

I/O Diagram



Specifications

Operating System

- Windows 10 IoT Enterprise 2015 LTSB for Tablets
- Windows Embedded 8.1 Industry 64-bit
- Windows Embedded Standard 8 64-bit
- Windows 7 Professional 64-bit
- Windows Embedded Standard 7 64-bit
- Android 4.4 (by request)

CPU

- Intel® Atom™ E3827 processor 1.75GHz

Storage & Memory

- 128GB mSATA SSD (option 256GB)
- 4GB DDR3L (8GB by request)

Display

- 10.1-inch 1920 x 1200 WUXGA; 1000 nits sunlight readable
- 10-point capacitive touch supports glove touch, water rejection, palm rejection, 2mm hard tip stylus
- Gorilla Glass3
- Digitizer by request

RF

- Wi-Fi 802.11 a/b/g/n/ac
- Bluetooth V4.0
- Optional 3.5G or 4G LTE
- GNSS(GPS/Glonass/BeiDou)

Webcam

- 2MP front camera
- 5MP rear camera with auto focus and LED flash

Data Collection

- NFC (option)
- 2D barcode reader (option)
- Smart card reader - CAC (snap-on, by request)
- Magnetic stripe reader (snap-on, by request)

Control Button

- Programmable button x 3
- Barcode trigger x 1
- Power, volume, Windows button

LED Indicator

- Power on/off
- Wi-Fi on/off
- Fn on/off
- Battery full/charging/low

Sensor

- Gyroscope, G-sensor, E-compass, light sensor

Power Adapter

- AC 100V~240V, 50~60Hz Input; 19VDC@3.42A, 65W

Battery

- Standard : 4500mAh, 10.8V, hot swappable
Battery operation* : 6 hours
- Extended : 9000mAh, 10.8V, hot swappable (option)
Battery operation* : 12 hours

*The listed battery life is based on MobileMark 2012[®] media mode testing.

I/O Interface

- USB 3.0 type A x 1, USB 2.0 type A x 1
- Gigabit ethernet (RJ-45) x 1
- RS-232 x 1 (optional for USB 2.0 type A)
- Audio jack (headphone/microphone combo) x1
- RF pass-through connector x 2 for WLAN, GNSS, WWAN
- 12-pin docking connector x1
- Speaker & microphone
- Micro SD slotx 1, Micro SIM slot x 1, Micro HDMI x 1

Dimensions and Weight

- 28 x 19.5 x 2.3 cm (11" x 7.7" x 0.9")
- 1.33 kg (2.93 lbs)

Rugged Features

- IP65, MIL-STD-810G, shock & vibration, 5 feet drop

Environment

- Operating temperature -20°C to 50°C
- Storage temperature -30°C to 70°C
- Humidity 5%~95%

Software

- DashON* *available to download from RuggON website

Security

- TPM 1.2

IN-box Accessories

- Pen
- Hand strap
- Shoulder strap
- Handle
- Power adapter

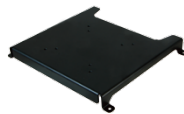
Peripherals



Vehicle Dock



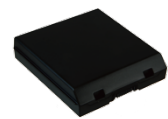
Desktop Dock



VESA Mount
Bracket



2-bay
Battery Charger



Long Life
Battery Pack