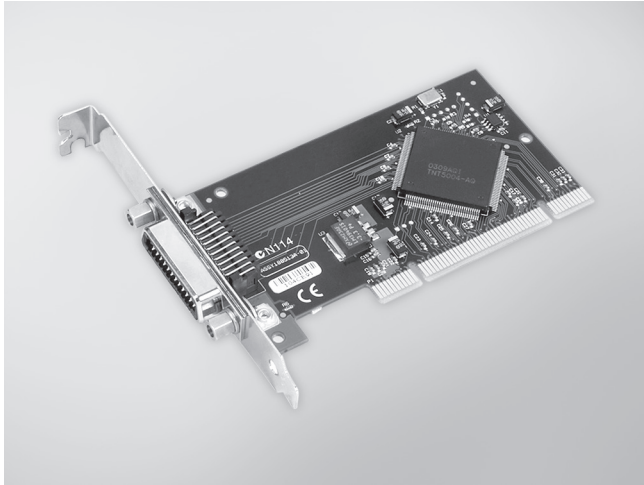


# PCI-1671UP

## IEEE-488.2 Interface Low Profile Universal PCI Card



FCC CE RoHS

### Features

- IEEE 488.2 Standard interface
- Complete Talker/Listener/Controller
- Industry standard 32-bit PCI bus
- Data transfer rates over 1.5 MB/s
- 1,024-word FIFO buffer
- High-Speed State Machine Bus Manager
- 7 Interrupt lines, shared interrupt capability
- Transparent interrupt enabling/disabling
- Includes GPIB-Library software
- Low profile MD1 size

### Introduction

The PCI-1671UP IEEE-488 interface converts any PCI bus personal computer into an instrumentation control and data acquisition system. Connect up to 14 instruments using standard IEEE-488 cables such as the PCL-10488-2, 2 meter IEEE-488 interface cable. The PCI-1671UP transfers data over the GPIB at rates in excess of 1.5 million bytes per second using the maximum IEEE-488 specification cable length (2 meters times the # of devices). A 1,024-word FIFO buffer and the advanced REP-INSW ISR data transfer method provide the horsepower required to then transfer the data between the GPIB board and the host computer. The high-speed state machine also provides byte-to-word packing and unpacking, and because words carry twice the information that bytes do, packed data requires fewer bus cycles to transfer the same GPIB information.

The PCI-1671UP adheres to ANSI/IEEE Standard 488-1978. Often referred to as the IEEE-488.2 bus, GPIB bus or HP-IB bus, the GPIB (General Purpose Interface Bus) is a standard for instrumentation communication and control for instruments from manufacturers the world over. The GPIB provides handshaking and interface communications over an 8-bit data bus employing 5 control and 3 handshake signals. Equipped with PCI-1671UP, a personal computer can control GPIB instruments, gather data from GPIB test equipment, or become a data acquisition station in a GPIB system.

### Specifications

#### GPIB

- **Compatibility** IEEE 488.1, 488.2
- **GPIB Transfer Rate** 1.5 MB/s
- **OS Support** Windows® 2000/XP/Vista and Win 7
- **Library Support** Visual C++, Visual C#, Visual Basic, Visual Basic .NET, Delphi, LabView
- **Max. GPIB Connections** 15 (14 Listener)

#### General

- **Bus Type** Universal PCI V2.2
- **I/O Connectors** 1 x 24-pin IEEE 488
- **Dimensions (L x H)** 120 x 64 mm (Low profile MD1)
- **Power Consumption** 5 V<sub>DC</sub> @ 375 mA
- **Operating Temperature** 0 ~ 60°C (32 ~ 158°F) @ 0-90% RH
- **Storage Temperature** -40 ~ 100°C (-40 ~ 212°F) @ 5-90% RH
- **Operating Humidity** 0 ~ 90% RH, non-condensing

### Ordering Information

- **PCI-1671UP** High-perform. IEEE-488.2 Interface PCI Card

#### Accessories

- **PCL-10488-2E** IEEE-488 Cable, 2 m