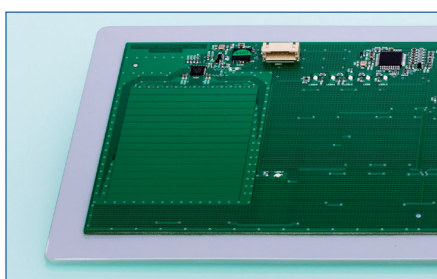


TKR-094-TOUCH-ADH-USB



- Completely flat user interface made of glass
- Resists all normal disinfectants
- Integrated numeric keypad
- Function keys
- Key lock for cleaning the keyboard
- Key sensitivity can be set using a key combination
- Acoustic signal can be set using a key combination
- Integrated touchpad
- Can be operated with latex or silicone gloves in hygienic environments

Technical data

Number of keys:	94	Material:	front plate made of hardened glass (3 mm)
Switching technology:	capacitive keys	Dimensions:	451 x 160 x 10.5 mm
Pressing force:	0 N	Interface:	USB
Switching travel:	0 mm	Operating temperature:	-20 up to 70° C
Mouse function:	capacitive touchpad (55 x 75 mm)	Storage temperature:	-20 up to 70° C
Degree of protection:	IP65 at the front	Glass print:	silk-screen printing
Design:	panel mount keyboard	Operating systems:	Windows®, MacOSX®, Linux

Order informations

Cat.Nr.	Product name	Layout
KR21200	TKR-094-TOUCH-ADH-USB-DE	German
KR21201	TKR-094-TOUCH-ADH-USB-US	US

Other language versions / interfaces / configurations available on request.

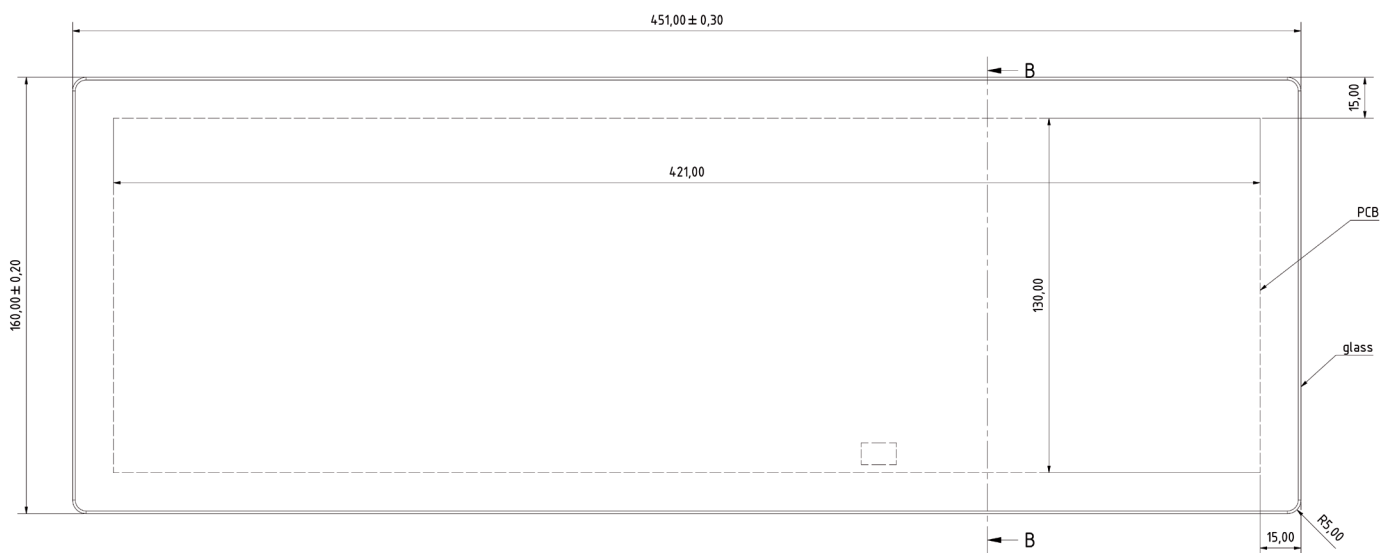
Errors and omissions excepted

TECHNICAL DRAWINGS

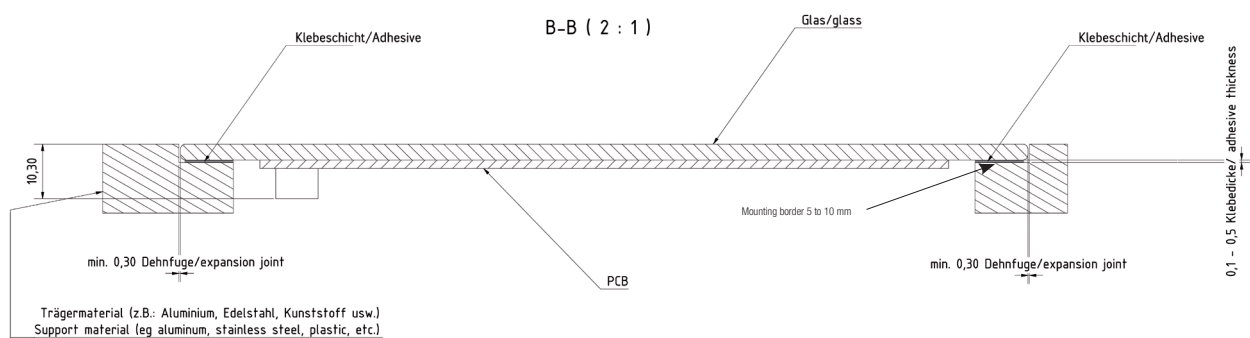
Cross section (long side)



Top view



Cross section



Errors and omissions excepted

RECOMMENDED ADHESIVE

Glued on the non-printed side of the glass!

Support material	3M Scotch Weld DP8805NS (liquid)	3M 5952VHB (Tape)	3M 4932VHB (Tape)
	max. load * (N)	max. load * (N)	max. load * (N)
Wood	130	25	38
Aluminium	450	25	62
Powder coated Metall	43	40	28
Corian	270	26	35
Anodized Aluminium	450	30	45
Stainless steel	450	35	71

* Pressure force opposite direction of installation; integration test under optimal environment

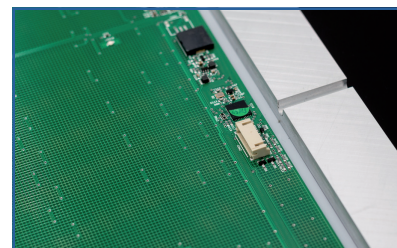
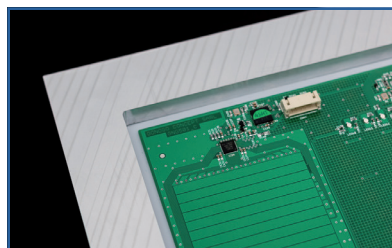
Glued on the printed side of the glass!

Support material	3M Scotch Weld DP8805NS (liquid)	3M 5952VHB (Tape)	3M 4932VHB (Tape)
	max. load * (N)	max. load * (N)	max. load * (N)
Wood	90	19,3	39,1
Aluminium	450	37,2	53,1
Powder coated Metall	55	33,9	22,1
Corian	250	28,5	37,1
Anodized Aluminium	450	34,5	57,6
Stainless steel	450	45,5	60,6

* Pressure force opposite direction of installation; integration test under optimal environment

Integration references

- An expansion joint of at least 0.3 mm is essential all around the glass.
- Please use silicone, acrylic or joint tape to seal the joint.
- Maintain a distance of at least 5 mm between the printed circuit board and metal parts both around it and to the rear.
- An additional cable relief is recommended.



Errors and omissions excepted

INDIVIDUALIZATION

- Measure
 - minimum width / length 451 x 160 mm
 - maximum width / length 500 x 600 mm
- Customized glass printing
 - colour similar to RAL / HKS / Pantone
 - individual Control designs
 - additional graphic elements (logos, symbols etc.)

