



We put space to work.

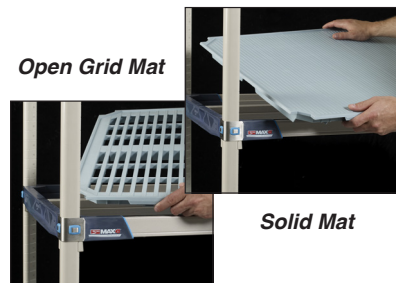
Item # \_\_\_\_\_

Job \_\_\_\_\_

## MetroMax® i Polymer Shelving

All polymer corrosion proof shelving constructed of advanced polymers and Type 304 stainless corners. Open grid or solid shelf mats easily lift off the shelf frames. Shelves and polymer posts offer a lifetime warranty against rust and corrosion. Shelf mats and posts have built-in Microban® antimicrobial product protection. Shelf has a rigid four-sided frame with center truss. Robust corner provides complete 360° capture of the wedge and post for added stability. Stationary units have maximum capacity of 2,000 lbs. (907kg) evenly distributed. Mobile units (with stem casters) offer a maximum total unit load of 900 lbs. (408kg). Units assemble easily — shelves mount on four one-piece wedges along numbered, grooved posts and adjust on 1" (25mm) increments.

- **Rust & Corrosion Proof:** All-polymer and Type 304 stainless design withstands moisture, chemicals, and harsh environments.
- **Forever Guarantee:** Lifetime warranty against rust and corrosion.
- **Maximum Strength:** Proven corner connection and rigid four-sided frame with center truss assure stability and strength in stationary, mobile, and high-density track shelving configurations.  
1000 lbs. (454kg) per shelf for lengths of 24" to 48" (610 to 1219mm)  
750 lbs. (340kg) per shelf for lengths of 54" (1372mm) or longer  
Stationary unit: 2000lbs (907kg) evenly distributed.  
Mobile unit (with stem casters): Up to 900lbs. (408kg).  
Multiply the caster load rating by 3 to determine actual rating.
- **Easiest to Clean :** Smooth surfaces easily wipe clean. Polymer mats can be easily removed and cleaned in a sink or commercial washer/dish machine.
- **Microban® Antimicrobial Product Protection** is built into the shelf mats and posts to inhibit the growth of bacteria, mold, mildew, and fungus that cause odors and product degradation. Microban product protection keeps the product "cleaner between cleanings".
- **Smooth, Protective Surfaces:** Smooth, flat surfaces protect packaged shelf contents from unwanted rips, tears, or damage.
- **Efficient Use of Space:** Shelves adjust on 1" (25mm) increments along the post to maximize the use of available vertical space.
- **Fast, Easy Assembly:** Shelves are ready to use right out of the box. One-piece wedges securely attach to the posts — Raised beads on the back of each wedge snap into the grooves on the post. Window on wedge aligns with numbers on the post to locate the desired shelf position. Shelf seats into position over the posts and wedges. A unit can be assembled without tools in minutes.
- **Interchangeable:** Part of the MetroMax platform, corrosion proof MetroMax i shelves are compatible on the same shelving units with MetroMax Q and MetroMax 4 shelves.
- **Robust Open Grid and Solid Mat Options:** Shelf mats are sturdy and safely support concentrated loads from instrumentation and equipment. Built-in ship's edge helps contain supplies in mobile applications.  
**Open grid mats** are sectioned and promote air circulation and light penetration.  
**One-piece solid mats** offer maximum spill retention and are ideal to protect items on the bottom shelf from dirt or backsplashes from cleaning floors.  
Note: 72" L (1829mm) solid shelf has two mat sections.
- **NSF Listed** for all environments.
- **Maximum Versatility:** complete line of accessories are found on spec sheet 9.25.



All Metro Catalog Sheets are available on our website: [www.metro.com](http://www.metro.com)



Supports good **HACCP** processes



L02-177  
Printed in U.S.A. 6/22

Information and specifications are subject to change without notice. Please confirm at time of order.

Copyright © 2022 InterMetro Industries Corp.



MetroMax® i Polymer Shelving

9.20

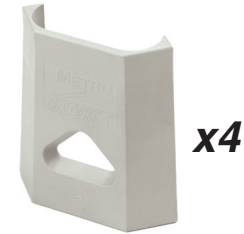
# MetroMax® i POLYMER SHELVING



We put space to work.®

### Material Specifications:

- **Shelf Mats:** Polypropylene with built-in Microban antimicrobial product protection.
- **Longitudinal Beams:** Pultrusions — continuous glass fibers and thermoset resin composite.
- **End Beams, Adjustable Foot and Socket, Shelf Wedge Connector:** reinforced nylon.
- **Bonding of Longitudinal Beams to End Beams:** High temperature polyamide adhesive and stainless steel screws.
- **Posts:** Pultrusions — continuous glass fibers and thermoset resin composite with built-in Microban® antimicrobial product protection.
- **Post Cap and Center Beam Cap:** High-density polyethylene.
- **“S” Hook Tab Hole Plug:** Vinyl.
- **Collar and “S” Hook:** Type 304 Stainless Steel.
- **Continuous Temperature** — MetroMax i® can be used continuously within a range of -20/120° F (-29/49° C) with intermittent exposure to 212° F (100° C) for cleaning.



**Replacement MetroMax i Wedges**  
Cat. No. **MX9985**  
Bag of 4 wedges

### Standard Shelves

- Part number includes shelf with removable mats and one bag of wedges.

Shelf with Grid Mats Model No.	Approx. Pkd. Wt.		Shelf with Solid Mat Model No.	Approx. Pkd. Wt.		Nominal Size			Actual Size				
	(lbs.)	(kg)		(lbs.)	(kg)	Width (in.)	Length (in.)	Width (mm)	Length (mm)	Width (in.)	Length (mm)		
MX1824G	8.7	4.0	MX1824F	12.7	5.8	18	457	24	610	18 <sup>1</sup> / <sub>4</sub>	464	23 <sup>11</sup> / <sub>16</sub>	602
MX1830G	10.5	4.7	MX1830F	14.5	6.6	18	457	30	762	18 <sup>1</sup> / <sub>4</sub>	464	29 <sup>1</sup> / <sub>16</sub>	754
MX1836G	12.2	5.5	MX1836F	17.2	7.8	18	457	36	914	18 <sup>1</sup> / <sub>4</sub>	464	35 <sup>1</sup> / <sub>16</sub>	907
MX1842G	13.9	6.3	MX1842F	20.1	9.1	18	457	42	1067	18 <sup>1</sup> / <sub>4</sub>	464	41 <sup>1</sup> / <sub>16</sub>	1059
MX1848G	15.7	7.1	MX1848F	23.1	10.5	18	457	48	1219	18 <sup>1</sup> / <sub>4</sub>	464	47 <sup>1</sup> / <sub>16</sub>	1211
MX1854G	17.5	7.9	MX1854F	21.5	9.7	18	457	54	1372	18 <sup>1</sup> / <sub>4</sub>	464	53 <sup>1</sup> / <sub>16</sub>	1364
MX1860G	19.2	8.7	MX1860F	23.2	10.5	18	457	60	1524	18 <sup>1</sup> / <sub>4</sub>	464	59 <sup>1</sup> / <sub>16</sub>	1516
MX1872G	22.5	10.2	MX1872F	27.5	12.5	18	457	72	1829	18 <sup>1</sup> / <sub>4</sub>	464	71 <sup>1</sup> / <sub>16</sub>	1821
MX2424G	12.2	5.5	MX2424F	14.2	6.4	24	610	24	610	24 <sup>1</sup> / <sub>4</sub>	616	23 <sup>1</sup> / <sub>16</sub>	602
MX2430G	13.9	6.3	MX2430F	15.9	7.2	24	610	30	762	24 <sup>1</sup> / <sub>4</sub>	616	29 <sup>1</sup> / <sub>16</sub>	754
MX2436G	15.6	7.1	MX2436F	19.6	8.9	24	610	36	914	24 <sup>1</sup> / <sub>4</sub>	616	35 <sup>1</sup> / <sub>16</sub>	907
MX2442G	17.5	7.9	MX2442F	21.5	9.8	24	610	42	1067	24 <sup>1</sup> / <sub>4</sub>	616	41 <sup>1</sup> / <sub>16</sub>	1059
MX2448G	19.3	8.7	MX2448F	25.3	11.5	24	610	48	1219	24 <sup>1</sup> / <sub>4</sub>	616	47 <sup>1</sup> / <sub>16</sub>	1211
MX2454G	21.0	9.5	MX2454F	25.0	11.3	24	610	54	1372	24 <sup>1</sup> / <sub>4</sub>	616	53 <sup>1</sup> / <sub>16</sub>	1364
MX2460G	22.8	10.3	MX2460F	26.8	12.1	24	610	60	1524	24 <sup>1</sup> / <sub>4</sub>	616	59 <sup>1</sup> / <sub>16</sub>	1516
MX2472G	26.0	11.8	MX2472F	31.0	14.1	24	610	72	1829	24 <sup>1</sup> / <sub>4</sub>	616	71 <sup>1</sup> / <sub>16</sub>	1821

### Heavy-Duty Dunnage Shelves

- Weight capacity per shelf evenly distributed: 1,200 lbs. (544kg) on shelves up to and including 48" (1220mm) long; 900 lbs. (408kg) for shelves 54" (1370mm) and longer.
- Dunnage shelves are recommended for use on units with four posts, not as part of an add-on unit with two posts.

Shelf with Grid Mat Model No.	Nominal Size		Approx. Pkd. Wt. (lbs.) (kg)
	Width (in.) (mm)	Length (in.) (mm)	
MHP2436G	24 610	36 914	21 9.5
MHP2448G	24 610	48 1220	27 12.2
MHP2454G	24 610	54 1370	29 13.2
MHP2460G	24 610	60 1524	33 15.0

### Stationary Posts

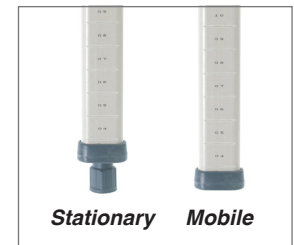
Model No.	Nominal Height		Actual Height*		Approx. Pkd. Wt.	
	(in.)	(mm)	(in.)	(mm)	(lbs.)	(kg)
MX13P	13	370	14 <sup>3</sup> / <sub>16</sub>	360	0.5	0.2
MX27P	27	685	28 <sup>9</sup> / <sub>16</sub>	716	0.9	0.4
MX33P	33	875	34 <sup>3</sup> / <sub>16</sub>	868	1.0	0.5
MX54P	54	1370	54 <sup>3</sup> / <sub>16</sub>	1376	1.6	0.7
MX63P	63	1585	62 <sup>3</sup> / <sub>16</sub>	1580	1.8	0.8
MX74P	74	1890	74 <sup>3</sup> / <sub>16</sub>	1884	2.2	1.0
MX86P	86	2195	86 <sup>3</sup> / <sub>16</sub>	2189	3.0	1.4

\*Actual Height with leveling foot completely tightened. Leveling foot can be adjusted up to 1" (25mm) to compensate for uneven floors.

### Mobile Posts — for use with stem casters

Model No.	Nominal Height		Actual Height		Approx. Pkd. Wt.	
	(in.)	(mm)	(in.)	(mm)	(lbs.)	(kg)
MX9UP	9	228	9 <sup>3</sup> / <sub>16</sub>	233	0.3	0.15
MX13UP	13	370	13 <sup>3</sup> / <sub>16</sub>	335	0.5	0.2
MX27UP	27	685	27 <sup>3</sup> / <sub>16</sub>	691	0.9	0.4
MX33UP	33	875	33 <sup>3</sup> / <sub>16</sub>	843	1.0	0.5
MX54UP	54	1370	53 <sup>3</sup> / <sub>16</sub>	1351	1.6	0.7
MX63UP	63	1585	61 <sup>3</sup> / <sub>16</sub>	1554	1.8	0.8
MX70UP	70	1778	69 <sup>3</sup> / <sub>16</sub>	1757	2.0	0.9
MX74UP	74	1890	73 <sup>3</sup> / <sub>16</sub>	1859	2.2	1.0
MX86UP	86	2195	85 <sup>3</sup> / <sub>16</sub>	2164	3.0	1.4

Consult spec sheet 9.25 for stem casters.



Note: For special height cut posts, consult your Metro representative.

MICROBAN® and the MICROBAN® symbol are registered trademarks of the Microban® Products Company, Huntersville, NC. Microban® product protection does not by itself protect a user from food borne illness. Product must be routinely cleaned.

an Ali Group Company



The Spirit of Excellence

