

apuro

Pie Warmer
Instruction manual



Model:
DC858-A / DC859-A

Safety Tips

- Position on a flat, stable surface.
- A service agent/qualified technician should carry out installation and any repairs if required. Do not remove any components on this product.
- Consult Local and National Standards to comply with the following:
 - Health and Safety at Work Legislation
 - Fire Precautions
 - Wiring Regulations
 - Building Regulations
- DO NOT immerse the appliance in water.
- DO NOT clean with jet/pressure washers.
- DO NOT obstruct or cover the appliance in any way when in use.
- Always allow the Pie Warmer to cool down before cleaning, maintaining or moving to avoid the risk of burns.
- DO NOT use the appliance for anything other than its intended use.
- Not suitable for outdoor use.
- Always switch off and disconnect the power supply to the appliance before cleaning.
- This appliance must only be used in accordance with these instructions and by persons competent to do so.
- Keep all packaging away from children. Dispose of the packaging in accordance to the regulations of local authorities.
- If the power cord is damaged, it must be replaced by an Apuro agent or a recommended qualified technician in order to avoid a hazard.

- This appliance is not intended for use by persons (including children) with reduced physical, sensory or mental capabilities, or lack of experience or knowledge, unless they have been given supervision or instruction concerning the use of the appliance by a person responsible for their safety.
- Children should be supervised to ensure that they do not play with the appliance.
- Apuro recommends that this appliance should be periodically tested (at least annually) by a Competent Person. Testing should include, but not be limited to: Visual Inspection, Polarity Test, Earth Continuity, Insulation Continuity and Functional Testing.

Introduction

Please take a few moments to carefully read through this manual. Correct maintenance and operation of this machine will provide the best possible performance from your Apuro product.

Pack Contents

The following is included:

- Pie Warmer
- Sliding glass door x 2
- Glass display panel
- Wire rack x 3
- Element Guard
- Water Reservoir
- Instruction manual

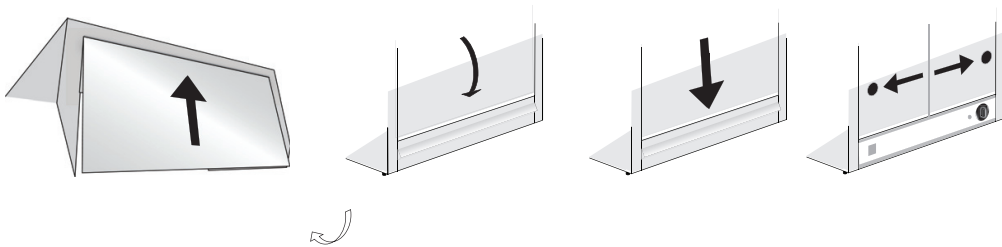
Apuro prides itself on quality and service, ensuring that at the time of packaging the contents are supplied fully functional and free of damage.

Should you find any damage as a result of transit, please contact your Apuro dealer immediately.

Installation

To install the Pie Warmer:

1. Remove the Pie Warmer from the packaging. Make sure that all protective plastic film and coatings are thoroughly removed from its surfaces.
2. Take the glass display panel and raise it at an angle into the upper track at the rear of the unit [Fig. 1].
3. Once at the top of the track, position the bottom of the glass above the lower track [Fig. 2].
4. Carefully lower the glass into the bottom track [Fig. 3].



5. Slide the wire racks into the bracket on the inner side of the Pie Warmer.
6. Insert the two sliding door panels in the same manner as the display panel. Ensure the handles are located towards the outside edges of the appliance [Fig. 4].
7. Connect the plug to a suitable mains socket and turn on the power supply.

Operation



Note: This appliance is for maintaining temperature only. It is NOT suitable for cooking products or heating products from cold.

1. Add water (0.5L) to the water reservoir
2. Set the thermostat to the desired temperature.
3. The unit will cycle on and off to maintain the set temperature.

The green indicator light and the interior lamp will turn on when the unit is switched on. The green indicator light will turn off when the desired temperature has been reached.



Note: The appliance has a maximum temperature setting of 90°C.

Cleaning, Care & Maintenance

- Always turn Off the appliance and disconnect from the power supply before cleaning.
- Allow the appliance to cool before cleaning.
- The inner body of the appliance should be wiped down at the end of each day's operation. Additional cleaning may be required depending on frequency of use.
- Warm soapy water is recommended for cleaning. Cleaning agents may cause damage or leave harmful residues when used for a prolonged period on stainless steel.
- The Apuro dealer or qualified technician should carry out repairs if required.

Troubleshooting

If your Apuro Pie Warmer develops a fault, please check the following table before making a service call.

| Fault | Probable Cause | Solution |
|----------------------------------------------------------------------|-----------------------------|---------------------------------------------------------------------------------------------------------------------------------------------------------------------------------------------|
| Appliance not working | The unit is not switched on | Check the unit is plugged in correctly and switched on |
| | Plug and lead are damaged | Call Apuro agent or qualified Technician |
| | Power supply | Check power supply |
| | Internal wiring fault | Call Apuro agent or qualified technician |
| Appliance heats up but indicator light does not come on | Indicator light is faulty | Call Apuro agent or qualified technician |
| Unit not heating up or heats up slowly and the indicator light is On | Incorrect operation | Ensure: <ul style="list-style-type: none"> • Thermostat has been set correctly • Doors are closed • Thermostat sensor bulb has not been removed or damaged |
| | Thermostat failure | Call Apuro agent or qualified technician |
| | Element failure | Call Apuro agent or qualified technician |

Technical Specifications

| Model | Voltage | Power | Current | Dimensions H x W x D mm | Weight | Approx. pie capacity | Heat up Time (to 90°C) | Temp. Range |
|---------|-------------------|-------|---------|----------------------------|--------|----------------------------|------------------------------|----------------|
| DC858-A | 220-240V, 50Hz | 350W | 1.5A | 435 x 470 x 365 | 16kg | 30 | 27 min. | 30-90°C |
| DC859-A | | 650W | 2.8A | 435 x 745 x 365 | 23kg | 60 | 28 min. | |

Electrical Wiring

The plug is to be connected to a suitable mains socket.

This appliance is wired as follows:

- Live wire (coloured brown) to terminal marked L
- Neutral wire (coloured blue) to terminal marked N
- Earth wire (coloured green/yellow) to terminal marked E

This appliance must be earthed.



If in doubt consult a qualified electrician.

Electrical isolation points must be kept clear of any obstructions. In the event of any emergency disconnection being required they must be readily accessible.

Compliance

The product must not be disposed of as household waste. To help prevent possible harm to human health and/or the environment, the product must be disposed of in an approved and environmentally safe recycling process. For further information on how to dispose of this product correctly, contact the product supplier, or the local authority responsible for waste disposal in your area.

Apuro parts have undergone strict product testing in order to comply with regulatory standards and specifications set by international, independent, and federal authorities.

Apuro products have been approved to carry the following symbol:



All rights reserved. No part of these instructions may be produced or transmitted in any form or by any means, electronic, mechanical, photocopying, recording or otherwise, without the prior written permission of Apuro.

Every effort is made to ensure all details are correct at the time of going to press, however, Apuro reserve the right to change specifications without notice.

DECLARATION OF CONFORMITY

• Conformanceverklaring • Déclaration de conformité • Konformitätserklärung • Dichiarazione di conformità •
• Declaración de conformidad • Declaração de conformidade

| | | |
|-------------------------------------------------------------------------------------------------------------------------------------------------------------------------------------------------------------------------------------------------------------------------------------------------------------------------------|--|---------------------------------------------------------------------------------------------------------------------------------------------------------------------------------------------------------------------------------------------------------------------|
| Equipment Type • Uitrustingstype • Type d'équipement • Gerätetyp • Tipo di apparecchiatura • Tipo de equipo • Tipo de equipamento | | Model • Modèle • Modell • Modello • Modelo • Malli |
| 3 Tier Economy Pie Cabinet - 30 Pie Capacity 3 Tier Economy Pie Cabinet - 60 Pie Capacity | | DC858-A DC859-A |
| Application of Territory Legislation & Council Directives(s) Toepassing van Europese Richtlijn(en) • Application de la/des directive(s) du Conseil • Anwendbare EU-Richtlinie(n) • Applicazione delle Direttive • Aplicación de la(s) directiva(s) del consejo • Aplicação de directiva(s) do Conselho | | Electrical Safety AS/NZS 60335.1:2011 +A1:2012 +A2:2014 +A3:2015 +A4:2017 IEC 60335-2-49:2002 +A1:2008 EN 62233:2008 Electromagnetic Compatibility EN 55014-1:2017 EN 55014-2:2015 EN 61000-3-2:2014 EN 61000-3-3:2013 |
| Producer Name • Naam fabrikant • Nom du producteur • Name des Herstellers • Nome del produttore • Nombre del fabricante • Nome do fabricante | | Apuro |
| Producer Address • Adres fabrikant • Adresse du producteur • Anschrift des Herstellers • Indirizzo del produttore • Dirección del fabricante • Morada do fabricante | | 15 Bagdally Road, Campbelltown NSW 2560 |

I, the undersigned, hereby declare that the equipment specified above conforms to the above Territory Legislation, Directive(s) and Standard(s).

Ik, de ondergetekende, verklaar hierbij dat de hierboven gespecificeerde uitrusting goedgekeurd is volgens de bovenstaande Richtlijn(en) en Standaard(en).

Je soussigné, confirme la conformité de l'équipement cité dans la présente à la / aux Directive(s) et Norme(s) ci-dessus
 Ich, der/die Unterzeichnende, erkläre hiermit, dass das oben angegebene Gerät der/den oben angeführten Richtlinie(n) und Norm(en) entspricht.

Il sottoscritto dichiara che l'apparecchiatura di sopra specificata è conforme alle Direttive e agli Standard sopra riportati.

El abajo firmante declara por la presente que el equipo arriba especificado está en conformidad con la(s) directiva(s) y estándar(es) arriba mencionadas.

Eu, o abaixo-assinado, declaro que o equipamento anteriormente especificado está em conformidade com a(s) anterior(es) Directiva(s) e Norma(s)

Date • Data • Date • Datum • Data • Fecha • Data

Signature • Handtekening • Signature • Unterschrift
 Firma • Firma • Assinatura

Full Name • Volledige naam • Nom et prénom • Vollständiger Name • Nome completo
 • Nombre completo • Nome por extenso

Position • Functie • Fonction • Position • Qualifica
 • Posición • Função

27th August 2020

| | |
|-------------------------------------------------------------------------------------|--------------------------------------------------------------------------------------|
|  |  |
| Ashley Hooper | Josie Holt |
| Technical & Quality Manager | Commercial Manager/ Responsible Supplier |





DC858-A_DC859-A_A5_v1_20200915