

Commercial Tapware



Watermark
AS/NZS 3718
2014:5



GUARDIAN[®] TAPWARE

Pillar Tap with Wall Mount Sensor



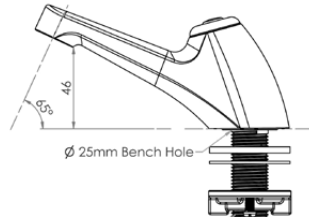
T-3MSS-PTSWB (battery operated)

T-3MSS-PTSWM (mains operated)

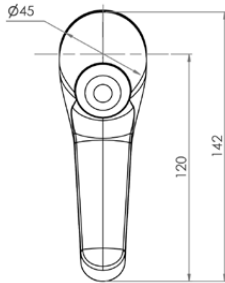
- Infrared 6 sec timed sensor
- Full S/S construction
- Equipped with 3monkeez sensor technology for hands-free operation
- Sensor is wall mounted
- Available as battery powered or mains operated
- 1/2" MI BSP Inlet
- WELS 6 Star 3LPM
- Working pressure range 150kPa-500kPa
- Maximum operating temperature 60 degrees



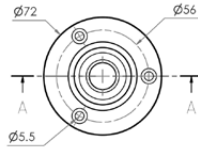
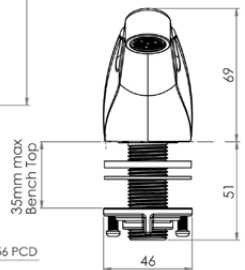
Side



Top



Front



Mounting Body

