



Safety instructions

Keep children away from appliance at all times. Save these instructions.

Safety instructions must always be followed in order to prevent damages resulting from the use of this appliance.

S.O.S.

Case of emergency:
Unplug from outlet immediately.

- Do not touch power cord when your hands are wet.
- Do not remove plug from outlet by pulling the cord.
- Do not clean cord using water and do not immerse in water or other liquid.
- Do not damage power cord and keep away from hot or sharp parts etc.
- Do not operate hand blender if it is damaged.
- Power cord may only be replaced by the manufacturer or an authorized service centre.

Blades are extremely sharp and may cause cut injuries. Wear suitable protection gloves!

Do not operate hand blender after the appliance malfunctions or if it is damaged in any manner. Contact our customer service or the nearest service facility in such case.

At the end of its operating life appliance should be recycled or disposed of properly.

NEVER dismantle or try to repair the appliance. Do not insert anything into the openings of the appliance. Do not use hand blender for other than intended use. In order to prevent injuries or damages appliance must only be repaired by our customer service or an authorized service centre.



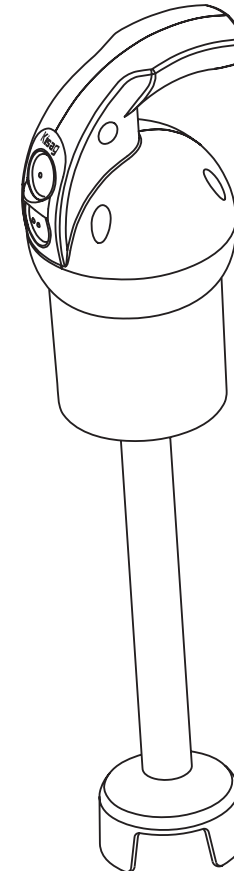
Kisag

Switzerland

Hand blender item no. 8220

English

GB



User manual

Version 02/2011

Product features

Modell:	Kisag Art. 8220	Total length:	38 cm/15 in.
Power:	230 VAC / 250 W	Depth of insertion:	20 cm/7,8 in.
Frequency:	50 Hz	Length of cord:	2 m/6,5 ft.
Rotation Speed:	low speed 15 000 r.p.m. high speed 20 000 r.p.m.	Weight:	1,2 kg/2,65 lb.

Specifications and testing

Safety regulations for appliances	EN 60335 – 1	EN 60335 – 2 – 14
Emission standards	EN 55014 – 1	EN 61000 – 3 – 2 EN 61000 – 3 – 3

Service and Warranty

Maintenance:

The blade is a wearing part and can be ordered under item no. 8220.210 in case of abrasion. Check the condition of the shaft seal occasionally. If the shaft seal is damaged, it must be replaced by the customer service or an authorized service centre.

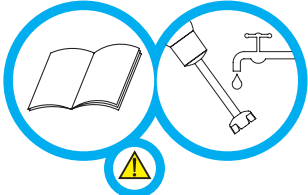
Guarantee provisions:

Within the statutory warranty period, any product failure that occurs due to manufacturing defect will be repaired free of charge. Proof of purchase is required. This warranty does not cover any damages caused by misuse, damaged parts or repair service other than those which have been authorized, wear or consequential damages. The appliance has to be returned to Kisag AG, CH-4512 Bellach or to a service facility chartered by Kisag, immediately after detection of a defect including a copy of the sales receipt and a description of the defect detected. Shipping will be paid.

Item no. 8220360

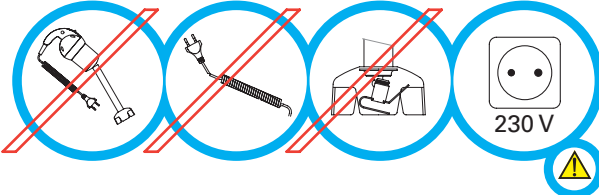
KISAG AG • Bahnhofstrasse 3 • CH-4512 Bellach • Tel. +41 32 617 32 60 • Fax +41 32 617 32 70
E-Mail: kisag@kisag.ch Internet: www.kisag.ch

1 First use



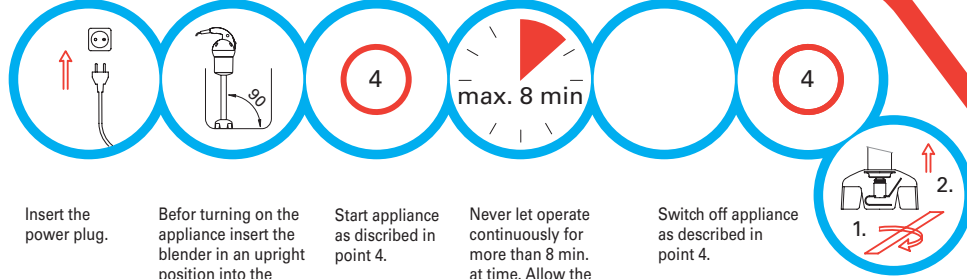
Read this manual and all safety instructions before using the appliance.
Clean the blender shaft, blender foot and blades before use.

2 Before every usage



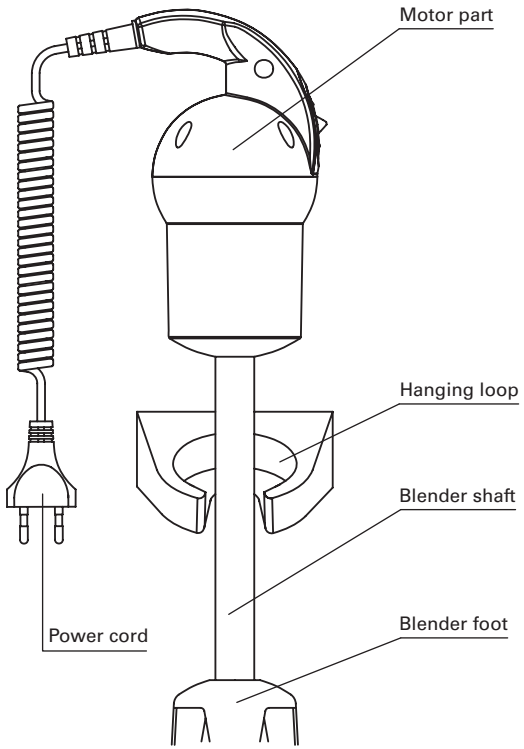
Check the appliance for damages.
Check the cord for damages.
Check for the blades are properly fixed in position.
Check if your power source is of the same voltage as indicated on the product.

3 Operating

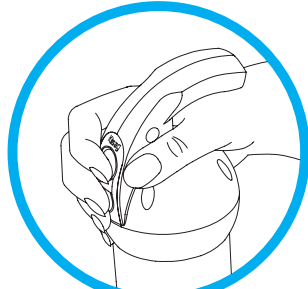
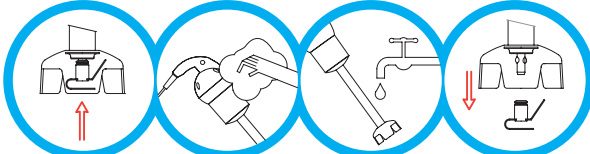
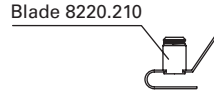


Insert the power plug.
Before turning on the appliance insert the blender in an upright position into the container holding the food to be processed. Never switch on appliance when outside container.
Start appliance as described in point 4.
Never let operate continuously for more than 8 min. at time. Allow the blender to cool afterwards.
Switch off appliance as described in point 4.

After having switched off the hand blender, make sure that the blades stop completely before lifting the appliance out of the food.



Cleaning instructions:
Be sure appliance is unplugged.
Remove the blade from drive shaft wearing an appropriate protective glove. After cleaning the appliance, push the blade on the drive shaft again till the retaining spring engages.
Brush blender shaft, blender foot, and blades thoroughly by using hot drinking water (min. 60°C/140°F) mixed with the usual detergent. Check that food particles are removed completely from any gaps. Rinse thoroughly with warm drinking water afterwards. Never allow water to run onto the motor housing. Leave to dry.
Wipe the motor housing clean with a damp cloth or sponge (soapy water). Never immerse in water and avoid splashing during cleaning.



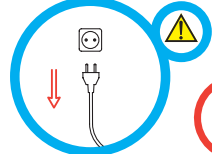
Turning on and off of the appliance:

Operation:
Right-handers take the appliance with the right hand/left-handers take it with the left hand.
Turning on the appliance:
Push the button I or II and keep it pressed, the appliance runs with the rotation speed chosen (I = low speed, II = high speed).
Turning off of the appliance:
The appliance turns off when releasing the pressed button.

Button low speed

Button high speed

When blending action is completed unplug appliance from the electrical outlet.



5 Completion of action

4

Operating appliance

