



HOSHIZAKI

KM-80C HC

Crescent 68kg Ice Maker - Self Contained

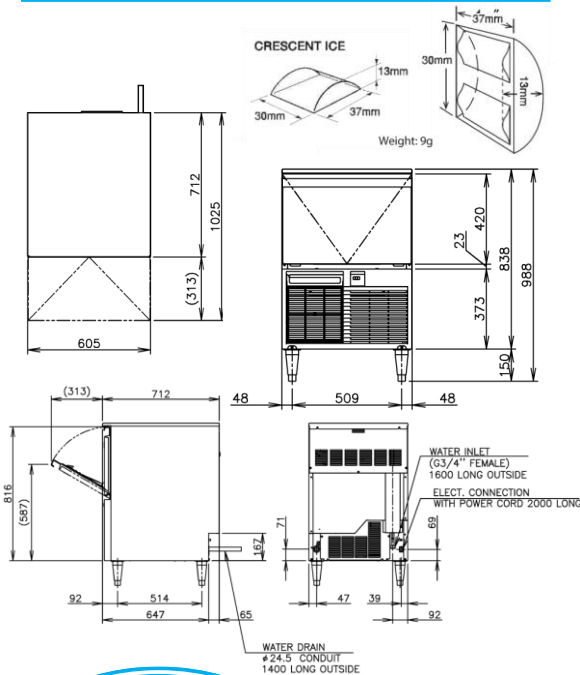
Model Number
91000149

PRODUCT FEATURES

- Individual premium crescent cube with no ice bridging.
- Exceptionally hard crystal-clear cubes that melt slowly.
- Durable stainless-steel exterior.
- Slide in air filter at front for easy cleaning -maintaining performance efficiency.
- Double-sided stainless-steel evaporator for all water conditions -produces more ice in less cycles.
- Flush mount to rear wall.
- Good in hard water areas.
- Snap in water tank design – easy to remove for sanitization.
- Low electrical consumption.
- Low water consumption.
- LED lights and audible alarms.



TECHNICAL DRAWING



PRODUCT SPECIFICATION

| | |
|------------------------------|--|
| Production Capacity / 24hrs | Approx. 68kg @ 21°C Air temp; 15°C Water Approx. 55kg @ 32°C Air temp; 21°C Water |
| Max Storage Capacity | Approx. 34kg |
| Freeze Cycle Time | Approx. 23 Min (At. 21°C Air ; 15°C Water) |
| Ice Production / cycle | Approx. 1.15kg/130pcs |
| Dimensions | 605mm (W) x 712mm (D) x 988mm (H) |
| Cooling | Air |
| Weight Net/Gross (kg) | 50/63 |
| Refrigeration System | Forced Air Circulation |
| AC Supply Voltage | 1 PHASE 220-240V 50Hz / 10amp Plug |
| Amperage | Running: 2.1A Starting: 12.5A |
| Refrigerant Charge | R290/147g |
| Operating Conditions: | |
| Ambient Temp | 7-38°C |
| Water Supply Temp | 7-32°C |
| Water Supply Pressure | 0.07-0.8MPa (0.7-8bar) |
| Voltage Range | ±6% |
| Electrical consumption | Rated Motor: 314W (Power Factor: 65%) |
| Water Consumption / 24hrs | Approx. 0.18m ³ /d(AT. 21°C ; WT 15°C) |



For free 6 month extended warranty, register online within 4 weeks of purchase date.
hoshizaki.com.au

INSTALLATION REQUIREMENTS

- Ensure the condenser is cleaned periodically as per the manufacturer's manual.
- Do not plug the unit into multi-plug power boards with other appliances
- Room ventilation or air conditioning can improve the situation by reducing the humidity.
- Hoshizaki recommends the use of a compatible water filter to prevent non-warrantable scale & sediment complications.

*Refer to manual for full installation & maintenance requirements.

